

# CASE STUDY

“

It's great to witness the new walkways in action.

This was a great team effort and it was made possible by everyone's involvement.

”

**Saica Flex**



**WAREHOUSE PERSONNEL WALKWAY IMPLEMENTED  
USING PROJECTED MARKINGS**

  
**SAICAFLEX**

**WAREHOUSE**  
SAFETY SOLUTIONS  
Quality. Safety. Delivered

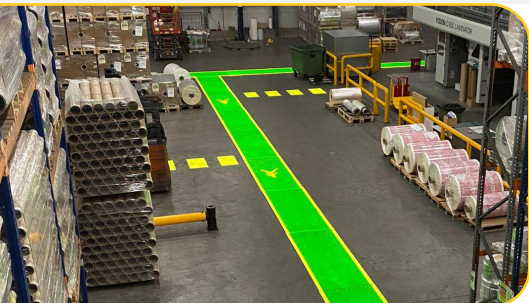
PRESENTED BY:

 **MEON**



**PROBLEM:**

Saica Flex ensure their assets stay protected with regular warehouse safety maintenance and have adopted an open-minded attitude to the benefits of innovative warehouse and facility safety solutions. Despite having experimented with various line marking materials, in such a harsh industrial environment the personnel walkway marking providing employees a safe route to navigate through their warehouse was not durable enough to stay visible over long periods of time without needing regular upkeep and maintenance.



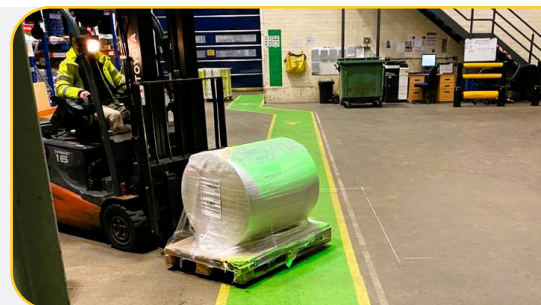
**SOLUTION:**

The solution was found with the implementation of state-of-the-art projected walkway markings, an excellent choice featuring an exceptionally bright projection and an impressive 50,000-hour lifespan. A demonstration was conducted with the Saica Flex team to prove the solution, accompanied by various tests to confirm the best colour configurations for their facility. These markings have exceptional brightness, ensuring constant visibility both during daylight and night time, along with automated motion sensor activated technology at crossing points.



**RESULT:**

Consequently, Saica Flex now has an exceptionally bright walkway, which benefits from infinite durability and unprecedented visibility. The installation stands as a long-term investment, given the adaptability that projectors can be relocated to accommodate any future alterations. Furthermore, the automated sensor activated technology successfully captures attention at crossing points and further significantly helps to enhance safety and prevent MHE risk.



**SYSTEMS USED:**

**Signum 75W LED Gobo Projector**



The Signum is a powerful compact LED projector designed specifically to project safety signs in harsh industrial environments. IP65 and the absence of cooling fans make it perfect for dusty places, both indoors and outdoors. With an average LED life of 50,000 hours, it guarantees prolonged usage.

**BENEFITS:**

- Uses interchangeable projection Gobos
- IP65 dust protection for harsh environments
- Repositionable projection angle
- Economic LED bulb

**RECOMMENDED USE:**



**PEOPLE SAFE** ✓  
**ASSETS PROTECTED** ✓

**WAREHOUSE**  
**SAFETY SOLUTIONS**  
 Quality. Safety. Delivered