

CASE STUDY

“

We really like the new d-flex barriers, they are working well as an effective safety measure for our personnel. We are looking to implement more soon.

”

Daniel Orabona
Wincanton for B&Q



**POLYMERIC BARRIER SYSTEMS USED AS A SOLUTION
TO INCREASE PERSONNEL SAFETY**



WAREHOUSE
SAFETY SOLUTIONS
Quality. Safety. Delivered

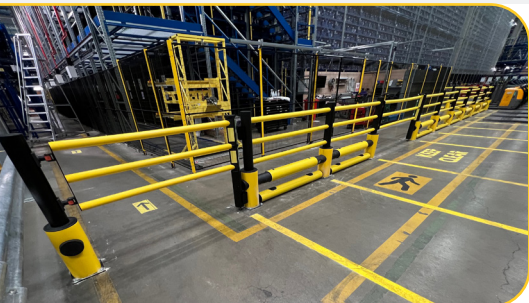
PRESENTED BY:





PROBLEM:

Wincanton takes great pride in its proactive approach to minimising workplace risk to its personnel. A warehouse barrier system in place featured large baseplates, which were protruding and causing a trip hazard. Additionally, a forklift training area is present in the warehouse, a more effective solution to help prevent forklift arms from sliding under the current barrier was required. The impact of not having an effective barrier system in place to protect personnel from the dangers around them leads to an increased chance of accidents and serious injury, which could have been avoided.



SOLUTION:

A more compact and effective barrier solution was found using polymeric d-Flexx barriers, to replace the existing barriers along the walkway. These barriers were incredibly simple to install and are impact resistant to forklift collision, effectively protecting the personnel. The flexibility of the polymeric design is sleek and innovative and allows them to safely withstand impact on multiple occasions, without the need to be replaced. Additional polymeric d-Flexx kerb barriers were installed underneath each barrier section at the forklift training area, providing a safety solution to the risk of injury to personnel from forklift lifting arms.



RESULT:

The level of risk to personnel was greatly reduced by the installation of the new polymeric barrier system, the sleek and compact design of the barriers provides safer use of the walkway and minimises trip hazards. The d-Flexx barriers are sufficiently impact resistant and highly flexible, making them an economic safety solution resistant to multiple collisions. The polymeric design is colourful and bright, allowing good visibility for personnel operating their material-handling equipment and forklifts. The chance of personnel injury from the forklift lifting arms was greatly reduced thanks to the d-Flexx kerb barrier installation, effectively reducing the chances of the forklift arms entering the personnel walkway.



SYSTEMS USED:



d-Flexx Traffic Barrier Mono PLUS

This d-Flexx Traffic Barrier Mono Plus system is designed to protect medium to high traffic areas. It is a combination of of the d-Flexx Traffic Barrier & Pedestrian Barrier.

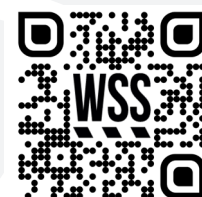
Due to the additional heavy pipe in the lower part of the traffic barrier plus, pedestrian areas can be protected additionally.



d-Flexx Swing Gate with Wheel

This Swing door can be positioned at any point within a barrier system and due to the fact that they can be 'handed' in multiple ways, they provide controlled exit points that force the user to stop whilst they open them.

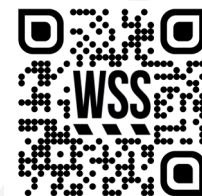
The hydraulic action hinge keeps the gate in the closed position and dampens the 'slamming' action, and the gate is available in multiple widths, to suit every application.



d-Flexx Kerb Barrier

This flexible d-Flexx kerb barrier is the ideal product to protect walls and assembly lines from collisions in low ground areas.

The round shape allows the colliding forklift to bounce of the barrier, therefore absorbing the force. It functions as a guide throughout the installed area. The kerb barrier can be combined with most of our d-flexx collection for a full safety solution.



PEOPLE SAFE
ASSETS PROTECTED

WAREHOUSE
SAFETY SOLUTIONS
 Quality. Safety. Delivered