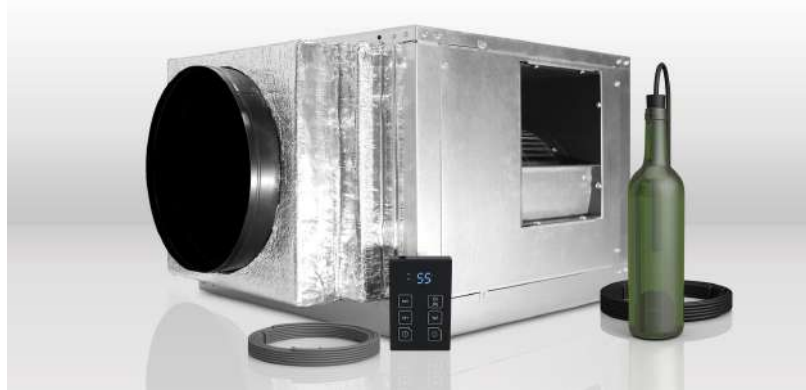


### Key Features

- Fully ducted split systems
- 9000 & 12000 BTU capacities for larger cellars
- Interchangeable evaporator airflow panels
- Pump down system technology
- Cold weather climates to -15 degrees Fahrenheit
- Electro-fin coated coils for outgassing protection
- Advanced electronic control keypad
- 50-ft. control cable and bottle probe
- Durable galvanized housing
- Mandatory secondary drain pan



### Features

The Quantum V2 Series cooling units are our newest, most advanced cooling systems. The fully ducted split systems come in two sizes, 9000 BTUs and 12000 BTUs. Utilizing R-404a refrigerant, these systems have been designed to be installed outside in cold weather climates where temperatures get as low as -15 degrees Fahrenheit. Simple to install by a certified technician, our pump-down technology does not require any wiring from the condensing unit to the evaporator unit. Features interchangeable panels which allow the installer to direct the air flow in the most efficient and convenient direction.

**NOTE:** The Quantum system must be installed by a qualified HVAC-R technician. Failure to have the system installed by a qualified technician will void the warranty.

### Specifications

Model	Quantum SS9000	Quantum SS12000
Cellar Size	3,000 cu. ft.*	4,000 cu. ft.*
BTU/h (85°F condenser air intake temperature)	9572	12530
CFM	810	
Dimensions	Evaporator: 29.5"L x 30.9"W x 19.8"H • Condenser: 24"L x 18.98"W x 16.16"H	
Refrigerant	R-134a	
HP	3.76	4.92
Voltage Rating	Evaporator: 115V (15 amp dedicated circuit required) Condenser: 230V (15 amp dedicated circuit required)	Evaporator: 115V (15 amp dedicated circuit required) Condenser: 230V (20 amp dedicated circuit required)
Weight (lbs)	Evaporator: 96 • Condenser: 75	Evaporator: 96 • Condenser: 85
Amps	Evaporator: 3.2 (running amps) Condenser: LRA 35/RLA 6.5	Evaporator: 3.2 (running amps) Condenser: LRA 56/RLA 12
Line Set	Liquid Line 3/8" • Suction Line (Less than 50ft. 3/4") (Greater than 50ft. 7/8")	Liquid Line 3/8" • Suction Line 7/8"
Drain Line	3/4" ID CPVC	
Installation	Evaporator can be installed up to 25 duct feet away from the cellar. Condensing unit can be installed up to 100 line feet from evaporator unit.	
Thermostat	Advanced digital display (50ft. cable), liquid-temperature-measuring bottle probe (50ft. cable)	
Temp. Delta	Can maintain a 55°F cellar temperature with up to 110°F condenser air intake temperature	
Warranty	Two-year limited warranty (parts and labor)	

\*Approximated in an environment that is fully insulated and sealed with a proper vapor barrier. Each wine cellar is unique and has specific cooling requirements. Heat load calculations should always be performed prior to selecting a cooling unit.

### Optional Accessories

Exterior condenser housing, 24V thermostat conversion kit, condenser coil coating

