



# MIMOSA<sup>®</sup>

THE SIGNATURE COLLECTION



## SLIM RUSTY OUTDOOR FIREPLACE



- Provides warmth and ambiance for outdoor settings
- For use with timber fuel
- Easy assembly

ITEM NO.  
0229113  
MADE IN  
CHINA

INFORMATION



Important: Please retain these instructions for future use

# Contents

Thank you .....	Page 1
Safety Warnings .....	Page 2
Parts List .....	Page 3
Assembly Instructions .....	Page 4
Operating Instructions .....	Page 8
Product Warranty .....	Page 10

# Thank you

Congratulations on the purchase of this product, and thank you for making it a member of your household. The creators of this product strive to provide excellent products at affordable prices. You can rest assured that all our products are manufactured to high standards of safety and quality, backed by a 12 month warranty. A lot of thought and development goes into all of our products, and we truly hope you are satisfied with your purchase.

# Safety Warnings

- **Outdoor use only. DO NOT use the fireplace indoors.**
- DO NOT position this product on a timber deck or any combustible surfaces.
- DO NOT leave the fireplace unattended during use.
- Remove bark, dried leaves and twigs well clear of this product prior to use.
- Carbon Monoxide Warning. Carbon monoxide is produced whenever solid fuels are burnt. To avoid poisoning or death, never use this product indoors, and never move this product indoors when it contains hot coals.
- The chimney must not be located below overhead construction such as a covered patio or alfresco ceiling.
- When in use, all surfaces of the fireplace will get hot. Do not touch the fireplace during use.
- Do NOT allow children or pets near the fireplace during use.
- Ensure your fireplace is positioned on a level surface and positioned at least 2 metres distance from any side or overhead combustible materials. E.g. house, fence, deck, trees, etc.
- DO NOT overload the fireplace with fuel. It may result in product failure, failure to contain hot coals and property damage.
- DO NOT use highly flammable chemicals such as petrol or spirits to light the fire or relight the fire.
- DO NOT use in windy conditions.
- DO NOT store or use flammables in the vicinity of the fireplace.

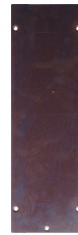
# Parts List



Part A Qty.1  
CHIMNEY CAP



Part B Qty.2  
CHIMNEY FRONT



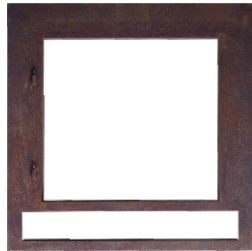
Part C Qty.2  
CHIMNEY SIDE



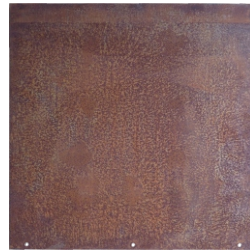
Part D Qty.1  
DOOR



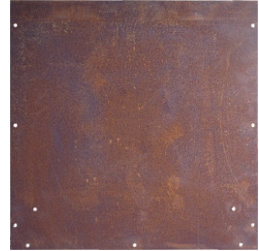
Part E Qty.1  
TOP



Part F Qty.1  
FRONT



Part G Qty.1  
BACK



Part H Qty.2  
SIDE



Part I Qty.1  
BOTTOM



Part J Qty.1  
SHELF



Part K Qty.2  
GRATE SUPPORT



Part L Qty.4  
LEG



Part M Qty.1  
HANDLE



Part N Qty.1  
LATCH



Part O Qty.1  
GRATE



Part P Qty.1  
ASHTRAY



Part Q Qty.63  
BOLT



Part R Qty.1  
NUT



ALLEN KEY

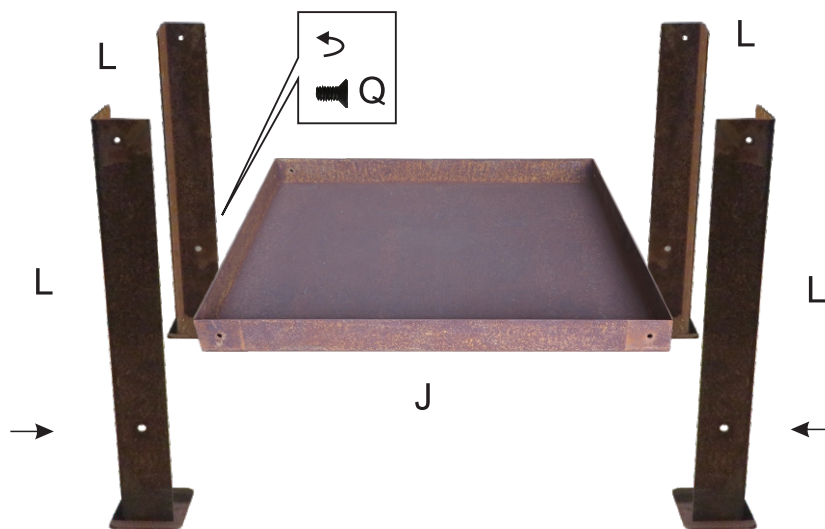
# Assembly Instructions

An allen key has been provided to assist with assembly.

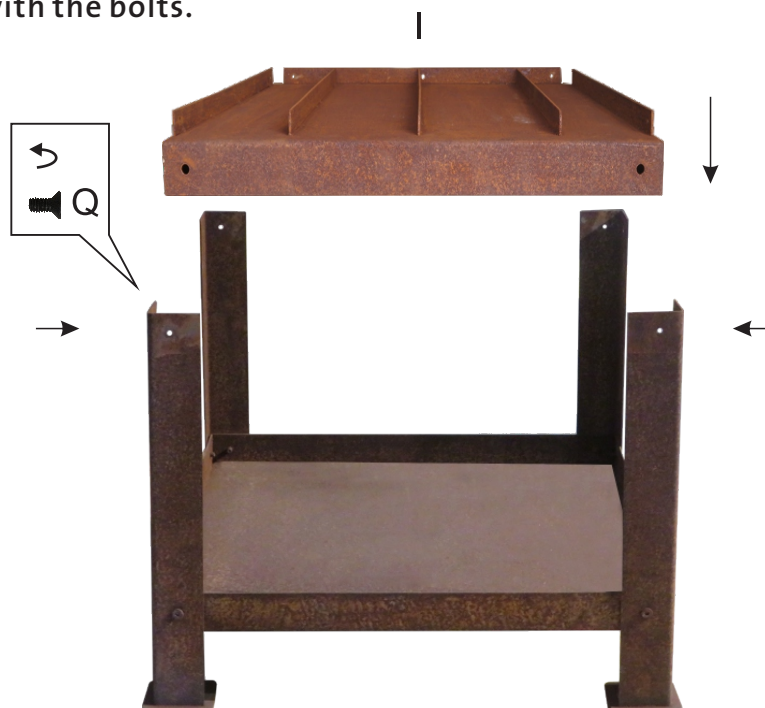


We recommend wearing gloves during assembly to prevent injuries from sharp edges.

**Step 1:**  
Fix the legs to the shelf with the bolts.

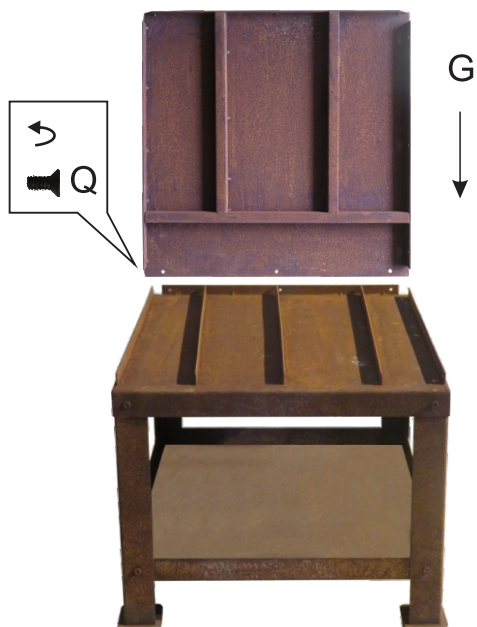


**Step 2:**  
Fix the bottom to the legs with the bolts.

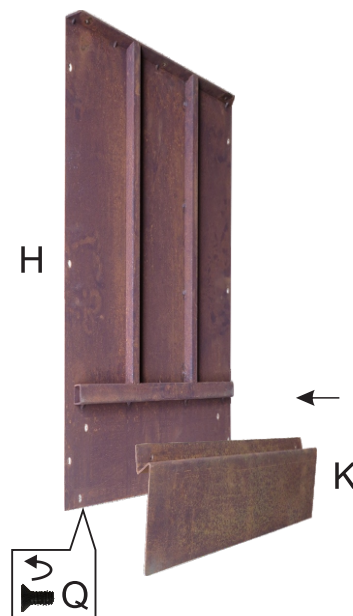


# Assembly Instructions

Step 3:  
Assemble the back to the bottom with the bolts.



Step 4:  
Fix the grate supports to the side panels.



Step 5:  
Attach the side panels with the bolts.

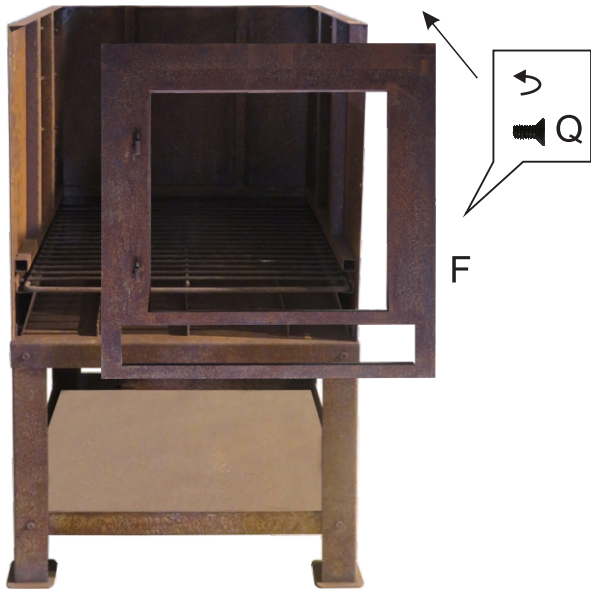


Step 6:  
Insert the grate.

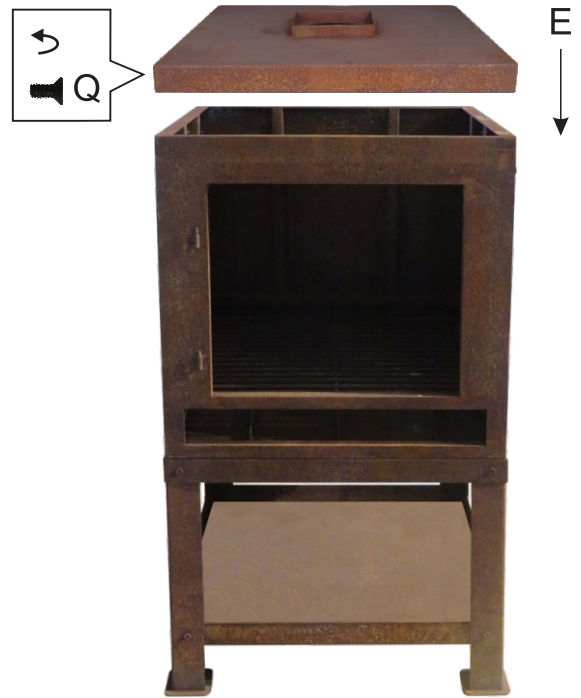


# Assembly Instructions

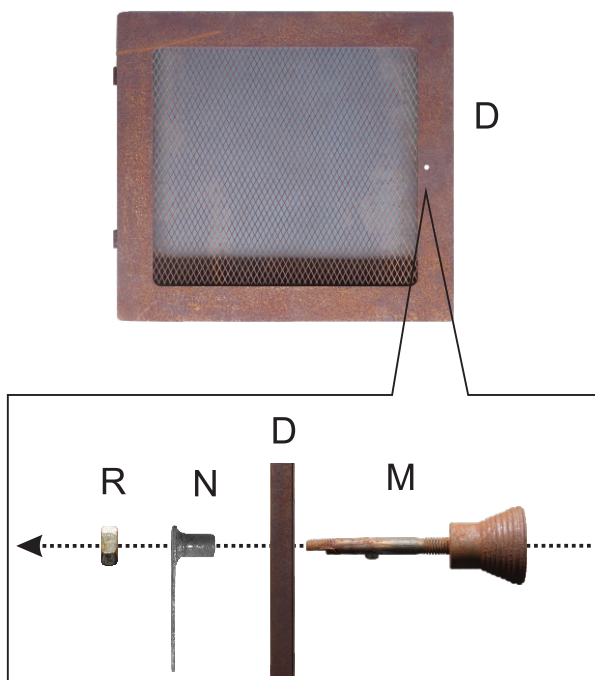
**Step 7:**  
Assemble the front with the bolts.



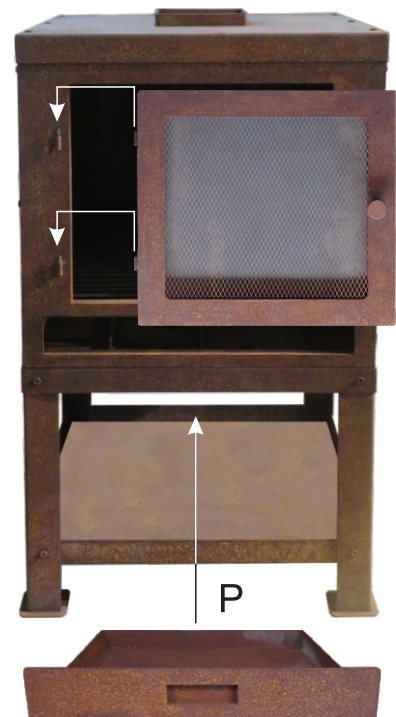
**Step 8:**  
Assemble the top with the bolts.



**Step 9:**  
Assemble the handle to the door, then insert the latch on the handle and fasten the assembly with the nut.



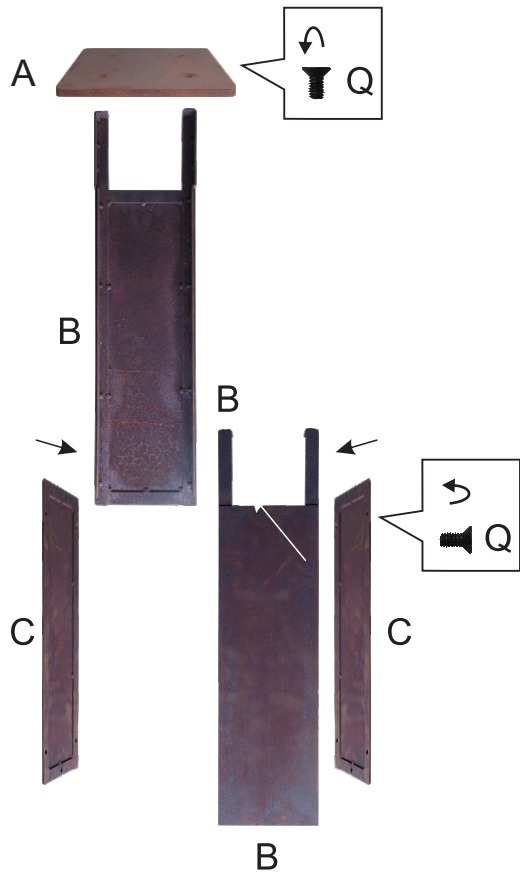
**Step 10:**  
Lower the door onto the hinges, and insert the ashtray.



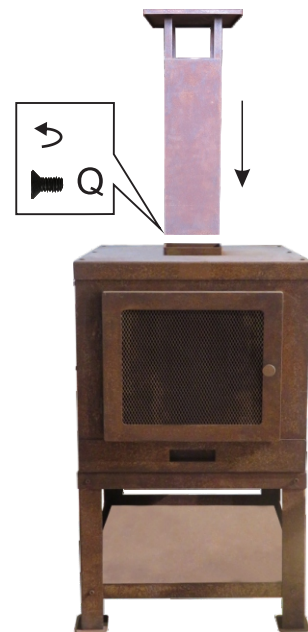


# Assembly Instructions

Step 11:  
Assemble the chimney with the bolts.



Step 12:  
Attach the chimney to the fireplace with the bolts.



Fully assembled.



# Operating Instructions

## Preparation

1. To get the fire started, you will need material that can be readily ignited or kindling and you will need firewood to fuel the fire.
2. Gather these materials before attempting to light the fire so you are prepared.
3. If the available firewood is too large, cut, trim or split the firewood to fit in the fireplace without overhang.
4. Don't overload the fireplace. As a general rule, the maximum fuel load is half the area of the grate.
5. Don't arrange the fuel in tight bunches. Allow space between the firewood pieces to ensure good air movement in the fire.

## Lighting

1. Place a layer of dry kindling such as sticks or twigs. You can also use firelighters.
2. Place a small amount of firewood directly above the kindling.
3. Use a long match or a gas lighter to light the kindling.

## Maintaining the Fire

- Wear oven mitts or protective gloves when tending to the fire.
- After the fire has been established, add more firewood directly on top of the fire as desired but do this gradually to avoid overloading.
- Use a poker to reposition coals and improve airflow as desired.
- Never pour Petrol, Kerosene, Diesel, lighter fluid or alcohol onto the fireplace.

## Extinguishing

Allow the fire to burn out. Do not douse the fire with water, the sudden temperature change can cause immediate damage to the fireplace.

# Operating Instructions

## Care and Maintenance

Allow the fireplace to cool before cleaning.

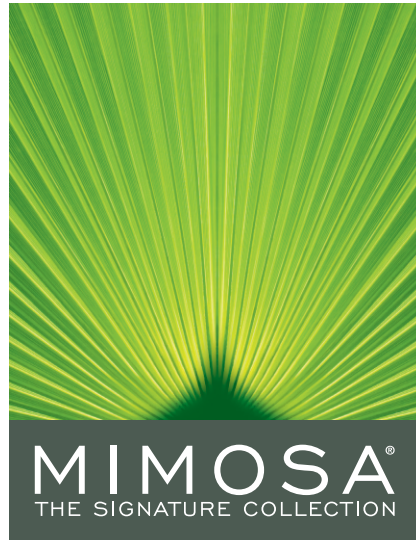
Always empty the residual ash after each use.

To extend the life of your fireplace, protect it from the elements when not in use.

The use of harsh, chemical cleaners or rough scourers can severely damage the external surfaces of your fireplace. Only use soap and water during cleaning and allow the surfaces to dry after cleaning to prevent excessive corrosion.

Do not clean this fireplace with a high pressure washer or steam cleaner.

If your fireplace has a pre-rusted exterior, don't apply any coatings or rust preventative sprays because they will damage the rusted aesthetic.



## **PRODUCT WARRANTY**

Any claim under this warranty must be made within 12 Months of the date of purchase of the product. To make a claim under the warranty, take the product (with proof of purchase) to any Bunnings store (see [www.bunnings.com.au](http://www.bunnings.com.au) or [bunnings.co.nz](http://bunnings.co.nz) for store locations)

Bunnings Group Ltd bears reasonable, direct, expenses of claiming under the warranty. You may submit details and proof to our store for consideration.

The warranty covers manufacturer defects in materials, workmanship and finish under normal use.

This warranty is provided in addition to other rights and remedies you may have under law: our goods come with guarantees which cannot be excluded under the Australian Consumer Law or Consumer Guarantees Act 1993 (NZ). You are entitled to replacement or refund for a major failure and to compensation for other reasonably foreseeable loss or damage. You are also entitled to have the goods repaired or replaced if the goods fail to be of acceptable quality and the failure does not amount to a major failure.

The warranty excludes damage resulting from product misuse or product neglect. The warranty covers domestic use only and does not apply to commercial applications.

This warranty is given by Bunnings Group Limited ABN 26 008 672 179, Botanicca 3 Level 2 East Tower 570 Swan Street, Burnley, VIC 312, e-mail:

[CustomerSupport@bunnings.com.au](mailto:CustomerSupport@bunnings.com.au)

Or call our Customer Support Team – Ph.1800 797 586

This warranty is given by Bunnings NZ Limited: Postal address: PO Box 14436, Panmure, Auckland 1741,

e-mail: [OnlineEnquiries@bunnings.co.nz](mailto:OnlineEnquiries@bunnings.co.nz) Or call our Customer Support Team – [Ph.1800 797 586](tel:1800797586)