

WIRE FUNCTION

LED Lighthouse:

HERO receives the POSITIVE (+) and GROUND (-) source through the OEM bulb socket plug. No extra wiring required. This lighthouse works for 2-function bulbs (F1: Tail/Park & F2: Stop/Turn) and 1-function bulbs (Stop, Tail, Turn or Reverse).

ATTENTION: If your HERO does not light up, unplug the bulb socket connector invert it 180° and reinsert into the bulb socket again. (Reason: Halogen bulbs can be inserted both ways, LED devices just one way. The lighthouse is protected against reverse polarity. → No worries, inserting it the wrong way will not harm the lighthouse electronics.)

NOTE: To insert the vehicle integration connector into a 1-function bulb socket, detach Pin #2 using a wire cutter or a similar tool. (see figure 3)

8' sync/program cable

Use this cable to connect the lighthouse to the customer provided siren control unit (+12V). The cable holds four colored trigger wires, one for each warning color (R/B/W/A).

Color guide*:

- | | |
|--------------|--------------------|
| • RED wire | Red warning LEDs |
| • BLUE wire | Blue warning LEDs |
| • BLACK wire | White warning LEDs |
| • AMBER wire | Amber warning LEDs |

Choose the color(s) you intend to use on the vehicle and connect the wire(s) to the output(s) on your siren control unit. The configuration of the colors, flash pattern and intensity need to be programmed through the siren's software.

* Please make sure, that the siren outputs are programmed to be 12V+.

PROGRAMMING

The HERO Flex series offers the capability of color choice, flash pattern and the synchronization of multiple lighthouses. The 8ft siren integration cable holds four individual wires, one for each color (R/B/W/A). The Flex series comes without a built-in flashing controller, every color is "steady burn". **It is the responsibility of the installer to program the flash pattern of the chosen colors with an external siren.**

The HERO Flex lighthouses have the capability to be operated with a dimmed power input signal (example: cruise/low light mode).

GENERAL INFORMATION:

When the driver applies the brake or activates the turn indicator, the STOP & TURN function will override the warning function. As soon as the driver releases the brake/turn indicator, the lighthouse returns to warning mode.

NOTE for Turn Signal replacements:

Our HERO 1.0 has a 1-second delay programmed into the built-in flash controller. This feature prevents the HERO warning LEDs (example red/blue) to light up in-between the single Turn signal impulses.

The HERO Flex series does not have a built-in flash controller. → The lighthouse warning strobe LEDs will light up in the dark phase of the Turn signal. To avoid the programmed warning LEDs on the HERO to light up, the installer has to program the HERO's warning function to shut off, once the driver activates the Turn signal. This must be done through the customer siren controller.

WARNING OPTIONS

The installer has full flexibility for the color combinations. The HERO Flex series Hideaways can be used as single- or multicolor LEDs.

Single Color:

Connect the colored trigger wire you intend to use to the siren's 12V+ output. Cap off the other 3 wires.

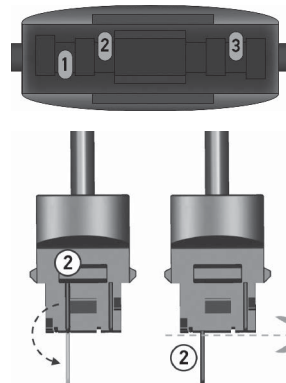
Multi Color:

Select and connect the correct color combination for your application. The installer must program the flashing speed and the alternating color sequence.

ATTENTION:

It is important that the individual colors do not light up at the same time within the same HERO. Running multiple colors **at the same time** will lead to overheating. LED failures due to wrong programming are not covered within HELLA's 5-year warranty.

INSERT VEHICLE INTEGRATION CONNECTOR INTO A 1-FUNCTION BULB SOCKET (figure 3)



WARNINGS

Warnings for the installer:

Do not attempt to install this lighthouse without the LED indicator control unit connected. The installer is responsible for ensuring that the installation and operation of this product will not interfere with the operation or efficiency of vehicle equipment.

The HERO Flex Series is for programmable siren use only. It is the installers responsibility to program the flash pattern with the siren software and make sure, that all light features work properly before they issue the vehicle to the end user.

Warnings to users:

HELLA's emergency vehicle warning devices are to alert other operators and pedestrians to the presence of emergency vehicles and personnel. The use of this or any other HELLA emergency warning device does not guarantee the right-of way or that others will properly respond to the emergency warning signal. Always proceed with caution when entering an intersection, driving against traffic, driving at high speed. Test your Emergency vehicle warning devices daily to ensure that it is operating to standard. Full understanding of Emergency vehicle warning device laws and regulations should be obtained.

Specification & technical data:

The lighthouse is positioned directly in the headlight's original bulb socket opening. Its fixation is realized with vehicle specific adapter bezels. These adapter bezels are designed to place the lighthouse in the exact same spot ("focal point") as the original bulb.

HELLA Automotive Sales Inc.
201 Kelly Drive Peachtree City,
Georgia 30269 USA

HELLA KGaA Hueck Co.
Rixbecker Strasse 75
59552 Lippstadt/Germany
www.hella.com

For customer support:

Email: hero.usa@hella.com
Phone: (770) 631-7500

Also visit:

www.myhellalights.com
www.hellaHD.com
www.hellahero.com



HERO

HELLA UNDERCOVER HIDEAWAY

FLEX SERIES
INSTALLATION GUIDE

SAFETY FIRST

This guide provides all necessary information for your HELLA HERO to be installed and used safely. Before starting make sure the installation technician and operator reads this manual completely to avoid serious injury or damage during installation.

- Do not install this product unless you are an installer with professional understanding of automotive electronics, systems and procedures.
- If Drilling holes is necessary during installation be sure the area is free from all other vehicle equipment to avoid damage while drilling. Smooth any rough edges after drilling and remove all metal remains. Grommets should be installed into all wire passing holes.
- Do not install equipment or wiring in the air bag deployment area. Anything installed in the air bag deployment area can cause serious personal injury or death. The Installer assumes full responsibility in determining the correct mounting location in keeping with the highest safety standards to all passengers inside the vehicle.
- When pairing a remote device, make sure to install the control in an area that is safe for the vehicle and the control under all driving conditions.
- Avoid prolonged direct eye contact with the LED's. Momentary blindness and/or eye damage could result.
- Do not use cleaning chemicals on the lens to avoid premature lens cracking and discoloration.
- Inspect the working condition of this product on a regular basis to ensure proper performance.
- Incorrect installation of parts and/or hardware will affect the product warranty.

HERO ASSEMBLY

Pre-install assembly: Mount the vehicle specific adapter bezel to the lighthouse.

Step 1: Take adapter labeled "1" and place it over the raised rectangular alignment guide of the LED lighthouse.

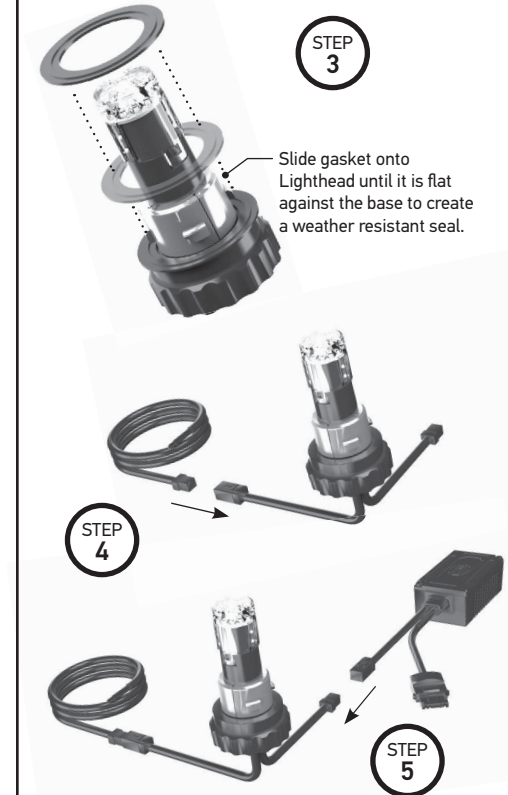
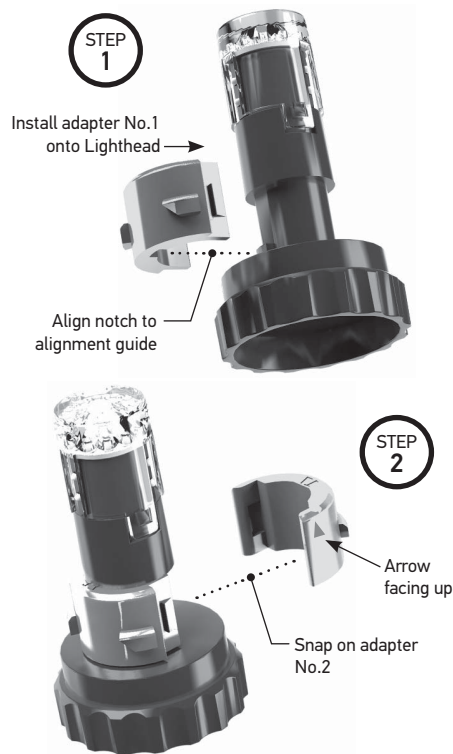
Step 2: Take adapter "2" and attach it to adapter "1". Make sure the adapters are locked/seated properly around the HERO base.

Step 3: Pull the rubber gasket over the LED lighthouse all the way down until the gasket sits flat against the base to create a weather resistant seal. Please note, there are two sizes provided. Install the one, that properly fits over the adapter installed in the step above.

Step 4: Attach the 8' siren integration cable to the white female inline connector of the LED lighthouse.

Step 5: Connect the HERO vehicle integration cable to the white male inline connector.

IMPORTANT: Do not install the HERO lighthouse without the vehicle integration cable.



INSTALL INTO VEHICLE

Step 6: Remove the OEM bulb socket out of the head-/taillight chamber by twisting it counter clockwise.

Step 7: Unplug the original Halogen/Incandescent bulb from the OEM socket. **(figure 1)**

Step 8: Take the connector of the vehicle integration cable (B) and insert it into the OEM bulb socket base. **(figure 2)**

Step 9: Affix the module/box on the integration cable to the vehicle's body or any other metal surface.

CAUTION: During operation the module will get very hot (up to 70°C/160°F). Keep flammable materials in a safe distance (1-2" minimum) to prevent damage of other components.

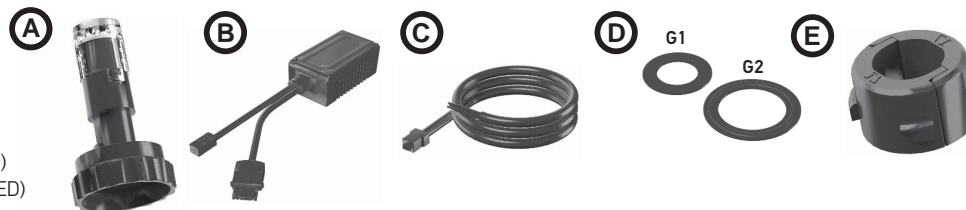
Step 10: Take the pre-assembled HERO and twist it clockwise into the head/taillight opening for the OEM bulb position. Make sure that the Lighthouse is seated properly to create a tight seal.

NOTE: The install of the HERO lighthouse into a Chevy Tahoe / Silverado headlight front turn chamber requires slightly different steps 7 & 8. Please follow the QR code below for a detailed install description.

TIP: We recommend using "Dielectric Grease" to seal the removed bulb socket and protect the contacts from water and corrosion.

SCOPE OF DELIVERY

- A) LED lighthouse
- B) HERO vehicle integration cable
- C) 8' siren integration cable
- D) Rubber gaskets (G1 - Ø 31mm, G2 - Ø 42mm)
- E) Vehicle specific adapter bezels (NOT INCLUDED)



CHEVY HEADLIGHT INSTALLATION

