

Limits unless otherwise stated:

| | |
|---------------|--------------|
| 1. Fabricated | : 0.75 |
| 2. Sand-Cast | : 0.35 |
| 3. Forging | : 0.25 |
| 4. Die-Cast | : 0.25 |
| 5. Moulded | : 0.15 |
| 6. Machined | : 0.15mm |
| 7. Angular | : 0.50degree |

Fits unless otherwise stated:

| | |
|-----------------|---------|
| 1. Free Running | = H9/d9 |
| 2. Running | = H8/f8 |
| 3. Clearance | = H7/h6 |
| 4. Sliding | = H7/g6 |
| 5. Interference | = H7/u6 |

Surface finishes unless otherwise stated:

| | |
|---------------|----------|
| 1. Sand-Cast | = 16.0µm |
| 2. Drilling | = 6.3µm |
| 3. Forging | = 6.3µm |
| 4. Milling | = 3.2µm |
| 5. Turning | = 3.2µm |
| 6. Boring | = 3.2µm |
| 7. Die-Cast | = 1.6µm |
| 8. Reaming | = 1.6µm |
| 9. Grinding | = 0.8µm |
| 10. Honing | = 0.4µm |
| 11. Polishing | = 0.2µm |

THIRD ANGLE PROJECTION

Dimensions in millimetres

Drawing to BS888:2004

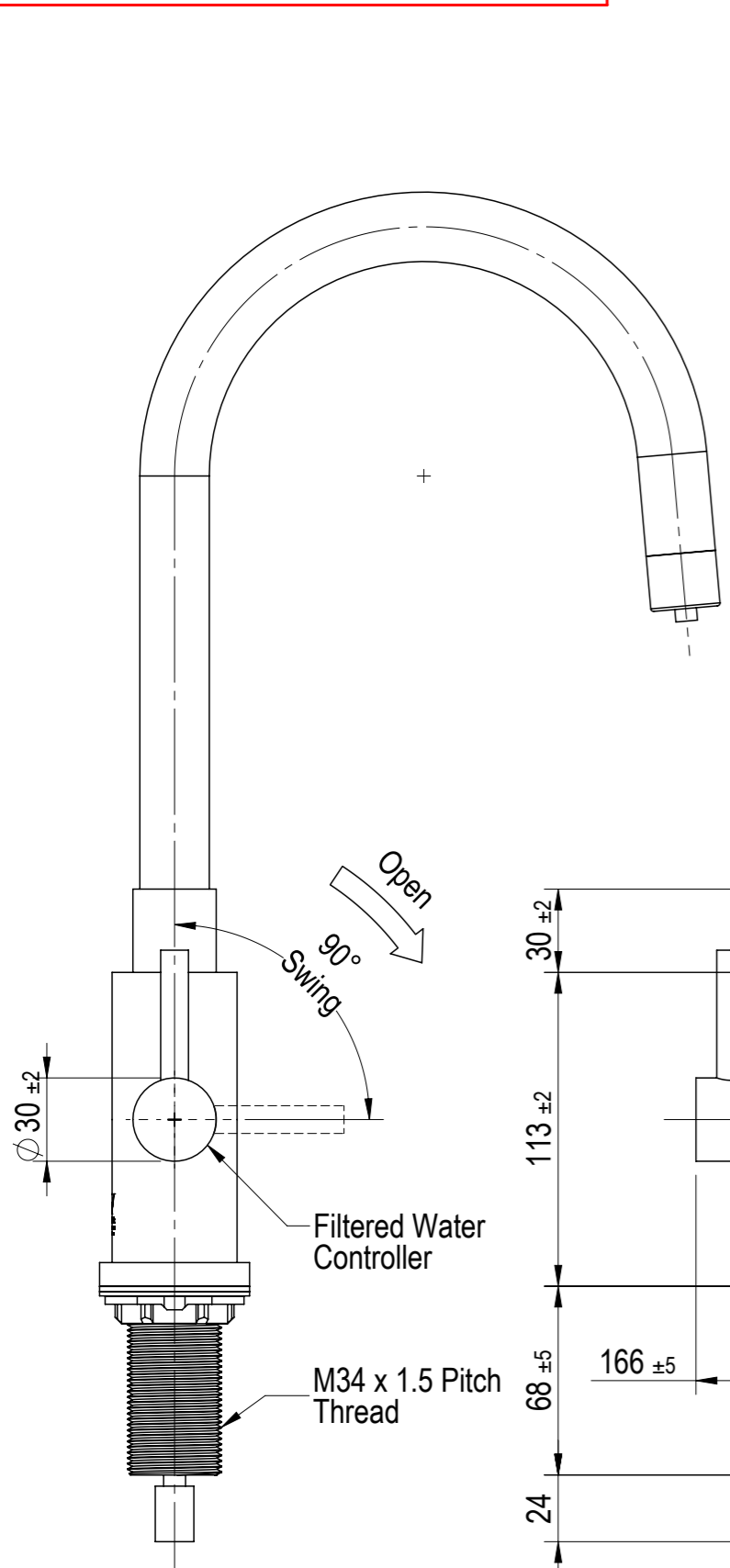
Screw threads to BS 8498:2008

Zip Industries Pty Ltd
67 Allingham Street
Condell Park
Sydney
NSW 2200
Australia

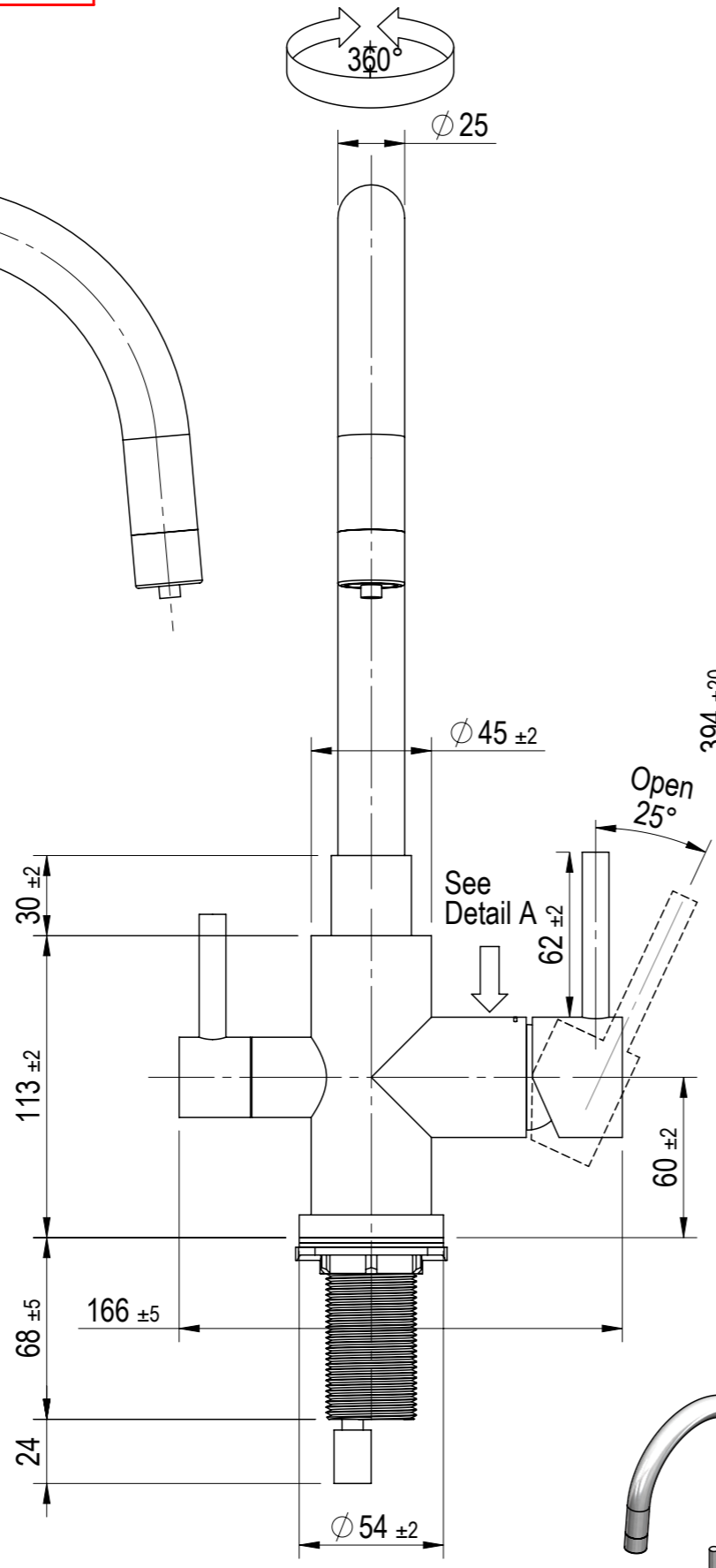
Web: www.zipindustries.com
Email: sales@zipindustries.com

Features marked with this symbol: must be referred to in the manufacturing control plan

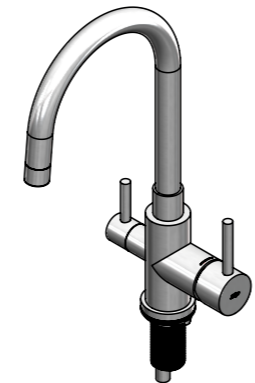
XXX.XX



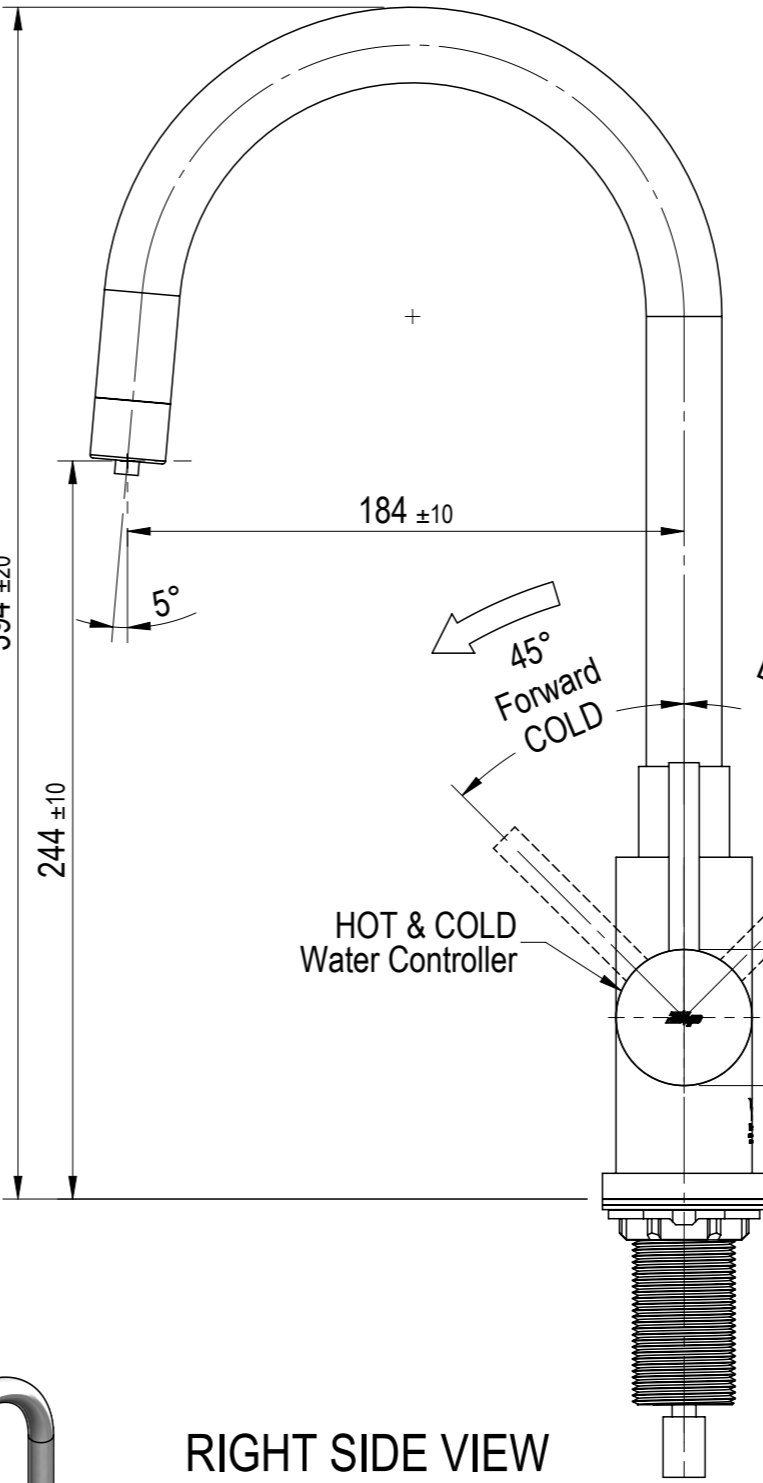
LEFT SIDE VIEW



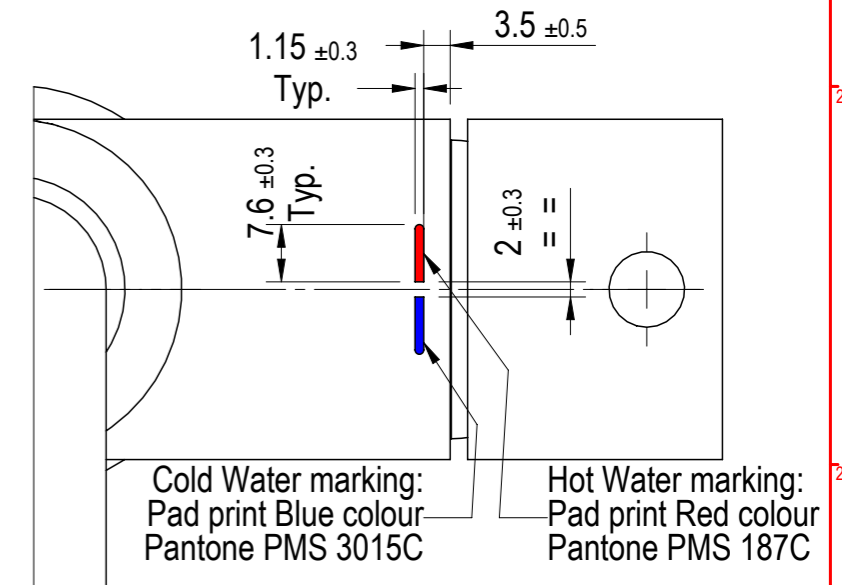
FRONT VIEW



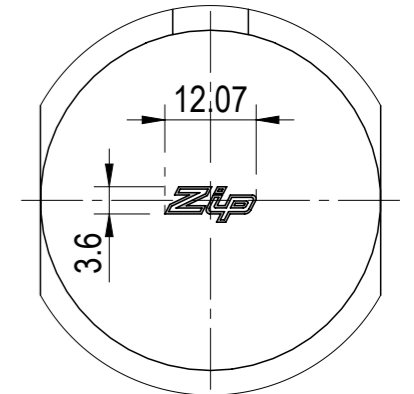
Isometric View
Configuration : Default
Scale : 1:7.5



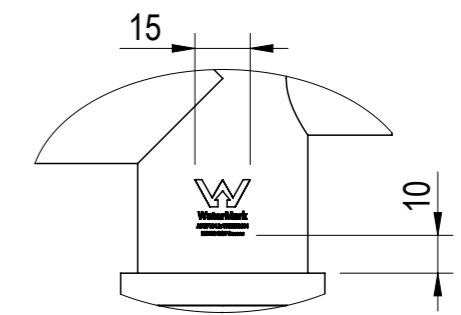
RIGHT SIDE VIEW



Detail A
Scale 1:1



Zip badge (use artwork provided by Zip)
Laser etch shaded region



WaterMark at Rear of Tap's Base

Drill ø35mm hole on kitchen sink or benchtop to install this Tap.
Maximum thickness of benchtop = 50mm

Zip Industries

Filter Mixer Tap
Brushed Stainless Steel

| | | | | | | |
|---|---|----------------------------------|-----------------------------------|---|---------------------|---------------------------------------|
| Pending Pre-Production | Manufacturing Instructions | | Approval: | Expiry Date: | Description: | |
| | Make or Buy: Buy | Manufacturing Route: Proprietary | Approved by: kevinm on 30/05/2017 | Updated by: edgarg on 26/07/2017 9:44:42 AM | Project: Filter Tap | Created by & on: EdgarG on 16/03/2017 |
| | Raw material: Proprietary | Material: S/S Gr304 | Material: S/S Gr304 | | Model: 805174 | Created by & on: EdgarG on 8/03/2017 |
| | Remove all sharp edges. This drawing ONLY details information which cannot be ascertained from the 3D geometry of the part(s) attached. Model & dimensions are AFTER all finishing operations | | Finish: Brushed Finish | Drawing: 805174 | | Configuration: Default |
| Comments: Laser etching Zip badge and Watermark | | Volume (cm ³): 596.1 | Area (cm ²): 1262.8 | Derived from: New | Colour: Natural | Size: A3 |
| Potable? No | Recyclable? Yes | Handed? No | Mass (g): 4768.9 | Density (g/cm ³): 8.0 | Scale: 1:1 | Sheet: 1 of 2 |
| | | | | Status: Pending Pre-Production | | Custom Property |