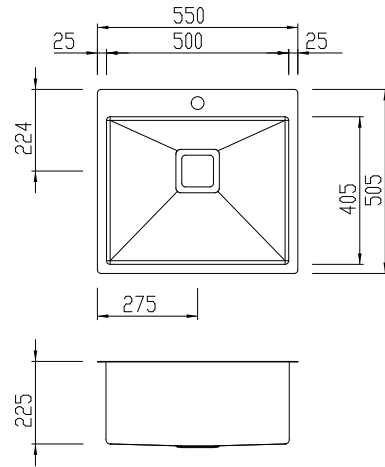


# PR1181

## Professional Series

Oliveri®



### INCLUDED ACCESSORIES

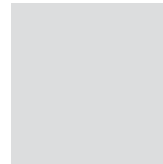
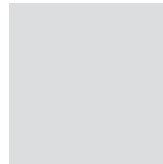
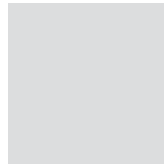
AC175Q



ACP141



ACPSQ8



### RECOMMENDED TAPWARE

TN2010

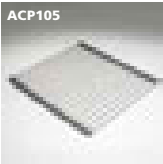


KE2030



### OPTIONAL ACCESSORIES

ACP105



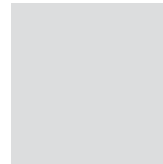
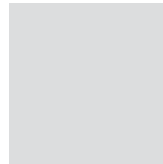
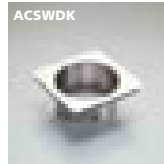
ACP126



ACP136



ACSWDK



### International collection™

Designed and engineered to our specifications and quality standards. Sourced from our international supplier.

### SPECIFICATIONS

#### Description

Single bowl inset sink

#### Sink Size

550W x 505H

#### Grand Bowl

500W x 405H x 225D / 46L

**Construction** Fabricated with 10mm radius corners, Softtone™ and soundproofing.

**Material** 304 grade, 18/10 brushed stainless steel (1.5mm thick)

**Installation** Inset recommended.

**Fixings** Topmount clips supplied

**Cut Out Template** 530 x 485 x 10mm radius

**Min Cabinet Size** 600mm

**Tap holes** n/a

**Waste fittings** 1 x 90mm square basket wastes included

**Overflow** Not available

**Carton Size** 620 x 595 x 290mm

**Weight** 11.0kg

**Warranty** Lifetime manufacturer's warranty (refer to oliverisinks.com)

For more information call **1300 13 7465** or visit **www.oliverisinks.com**

