



# PHOENIX

## SPECIFICATIONS

### CERCHIO

### SHOWER / BATH DIVERTER MIXER

PRODUCT CODE: CE791  
 FINISH: CHROME  
 WELS: N/A

#### INFORMATION:

TEMPERATURE RATING: MIN 1° - MAX 75°  
 PRESSURE RATING: MIN 150 kPa - MAX 500 kPa

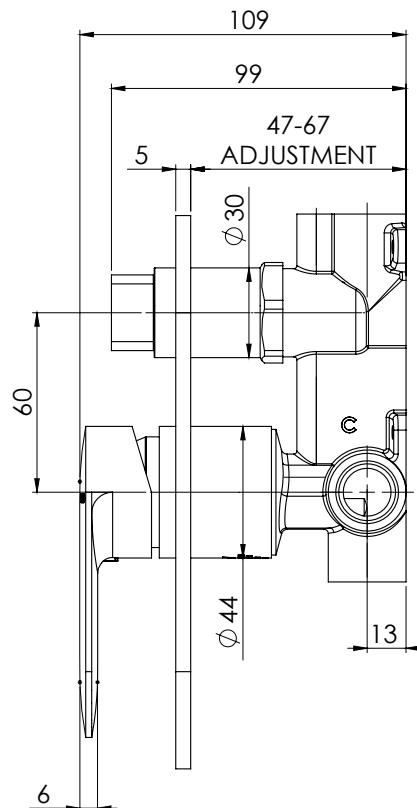
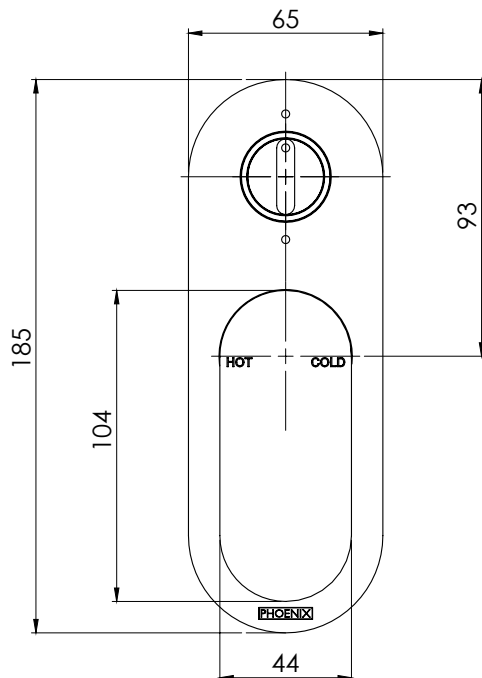


AVAILABLE IN:



CHROME

FOR MORE INFORMATION VISIT  
[www.phoenixtapware.com.au](http://www.phoenixtapware.com.au)



PLEASE [CLICK HERE TO VIEW FULL WARRANTY](#)

While we aim to ensure the specifications shown are correct at time of printing, Phoenix Tapware reserves the right to make modifications without prior notice. Always use the physical product measurements for mark-ups and roughing-in as the line drawing shown may differ from the actual product over time. All measurements are shown in millimetres.

[www.phoenixtapware.com.au](http://www.phoenixtapware.com.au)  
03 9780 4200



# PHOENIX

## SPECIFICATIONS

### CERCHIO

### SHOWER / BATH DIVERTER MIXER

PRODUCT CODE:

CE791

FINISH:

CHROME

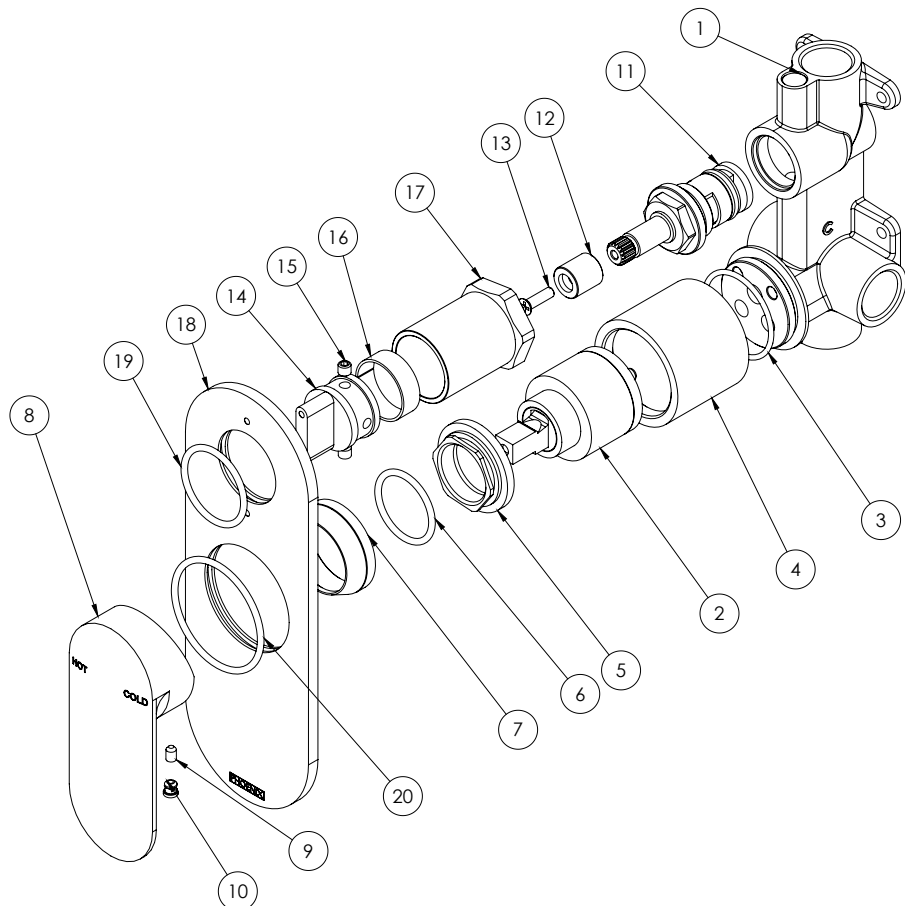
WELS:

N/A



#### PARTS LIST

1. MIXER BODY BRAZE
2. 35MM CARTRIDGE
3. O-RING
4. MIXER BODY
5. MIXER LOCKNUT
6. O-RING
7. BASIN DOME
8. MIXER HANDLE
9. GRUB SCREW M4X6
10. RUBBER SCREW CAP
11. DIVERTER
12. DIVERTER ADAPTOR
13. SCREW
14. DIVERTER BUTTON
15. GRUB SCREW M5X5
16. DIVERTER NYLON BEARING
17. ROTARY DIVERTER SLEEVE
18. MIXER BACK PLATE
19. O-RING 29X2.5
20. O-RING 43X2.5



#### MAINTENANCE AND CARE:

- All surfaces should be cleaned with mild liquid detergent or soap and water.
- Do not use cream cleaners or citrus based cleaning products, as they are abrasive.
- Use of unsuitable cleaning agents may damage the surface. Any damage caused in this way will not be covered by warranty.

#### PACKAGING INCLUDES

- 1 x Shower / bath diverter
- 1 x Back plate
- 1 x Mixer handle
- 1 x Installation kit
- 1 x Installation instructions
- 1 x Warranty card

PLEASE [CLICK HERE](#) TO VIEW FULL WARRANTY

While we aim to ensure the specifications shown are correct at time of printing, Phoenix Tapware reserves the right to make modifications without prior notice. Always use the physical product measurements for mark-ups and roughing-in as the line drawing shown may differ from the actual product over time. All measurements are shown in millimetres.

[www.phoenixtapware.com.au](http://www.phoenixtapware.com.au)  
03 9780 4200