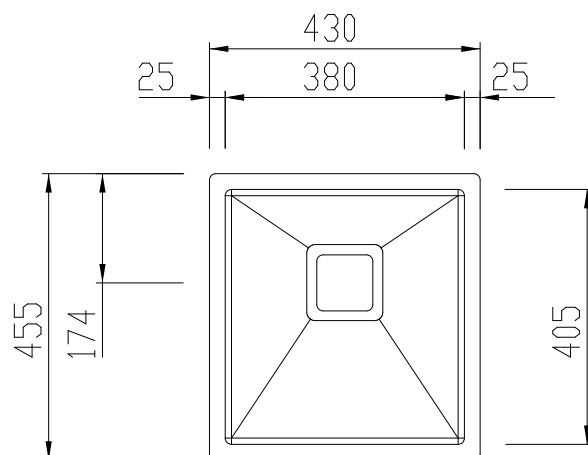
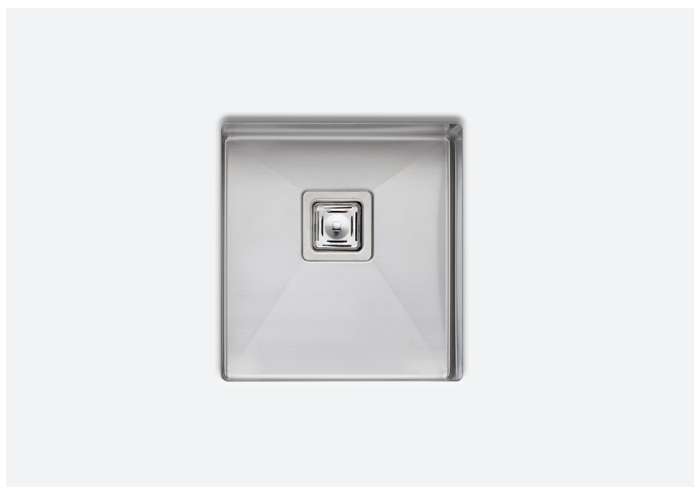


PR1130U

Professional Series

Oliveri®

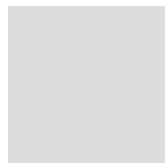
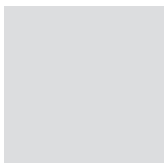
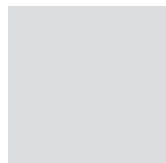
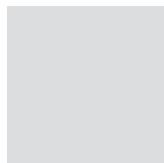


INCLUDED ACCESSORIES

AC175Q



ACPSQ3



RECOMMENDED TAPWARE

TN2010

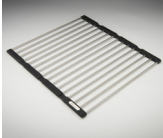


KE2030



OPTIONAL ACCESSORIES

ACP105



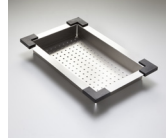
ACP141



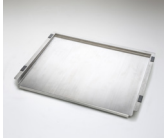
ACP126



ACP136



ACP109



ACSWDK



International collection™

Designed and engineered to our specifications and quality standards. Sourced from our international supplier.

SPECIFICATIONS

Description

Single bowl undermount sink

Sink Size

430W x 455H

3/4 Bowl

380W x 405H x 225D / 35L

Construction

Fabricated with 10mm radius corners, Softtone™ and soundproofing.

Material

304 grade, 18/10 brushed stainless steel (1.5mm thick)

Installation

Undermount recommended.

Fixings

Undermount clips supplied

Cut Out Template

oliverisinks.com

Min Cabinet Size

500mm

Tap holes

n/a

Waste fittings

1 x 90mm square basket waste included

Overflow

Not available

Carton Size

520 x 500 x 290mm

Weight

8.6kg

Warranty

Lifetime manufacturer's warranty (refer to oliverisinks.com)

For more information call **1300 13 7465** or visit **www.oliverisinks.com**



facebook.com/
OliveriAU



twitter.com/
OliveriAU



pinterest.com/
OliveriAU

© Registered trademark of Tasman Sinkware. Under its policy of ongoing product development Tasman Sinkware may from time to time change product specification without notice. All dimensions given are approximate and should be checked prior to installation. See Oliveri installation instructions for installation details.