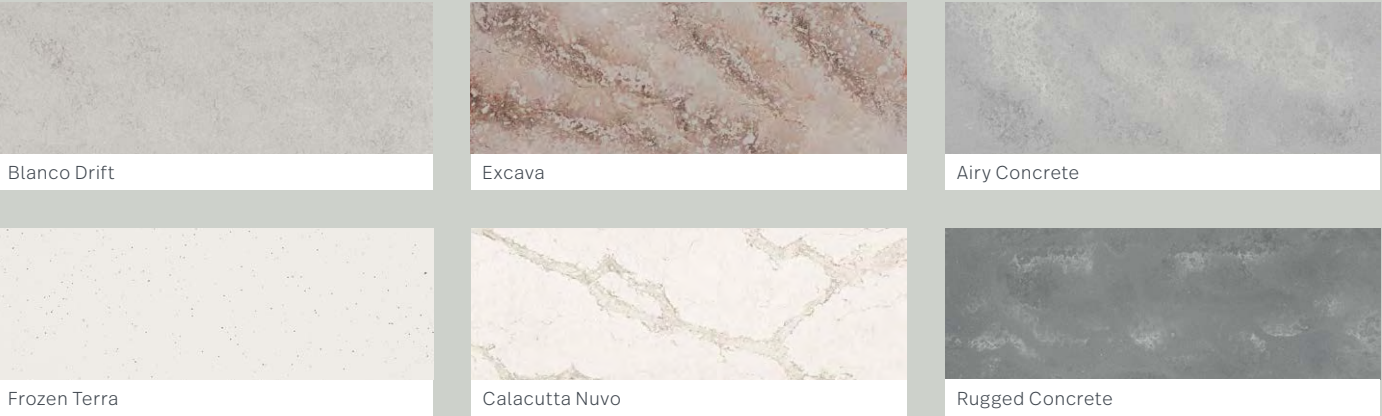


# Finishes

## Benchtops

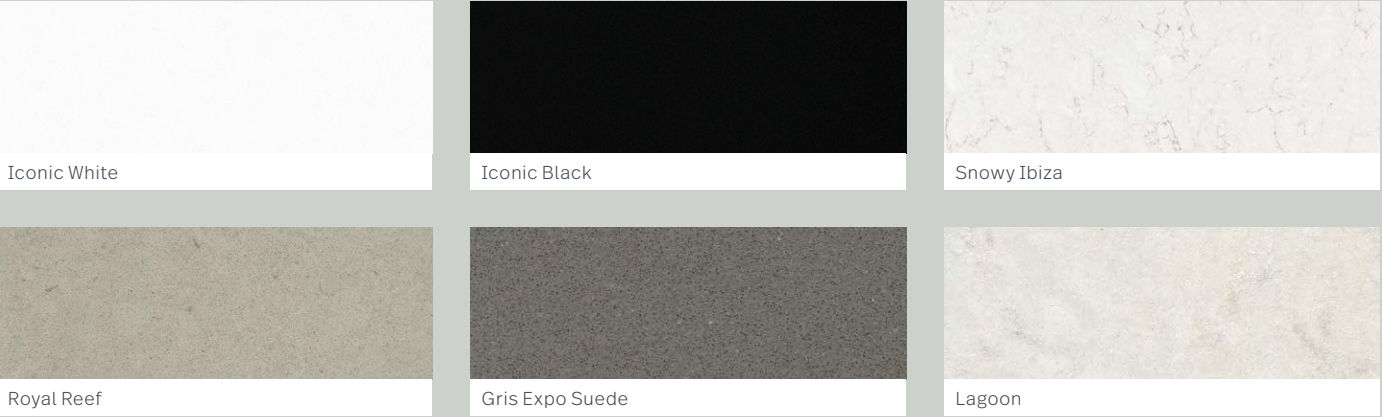
**Top—Caesarstone®** 20mm engineered quartz – looks great, durable, textured finishes



For all of the many Caesarstone options go to [caesarstone.com.au](https://caesarstone.com.au)



**Top—Silestone** 20mm engineered quartz – looks great, durable, textured finishes



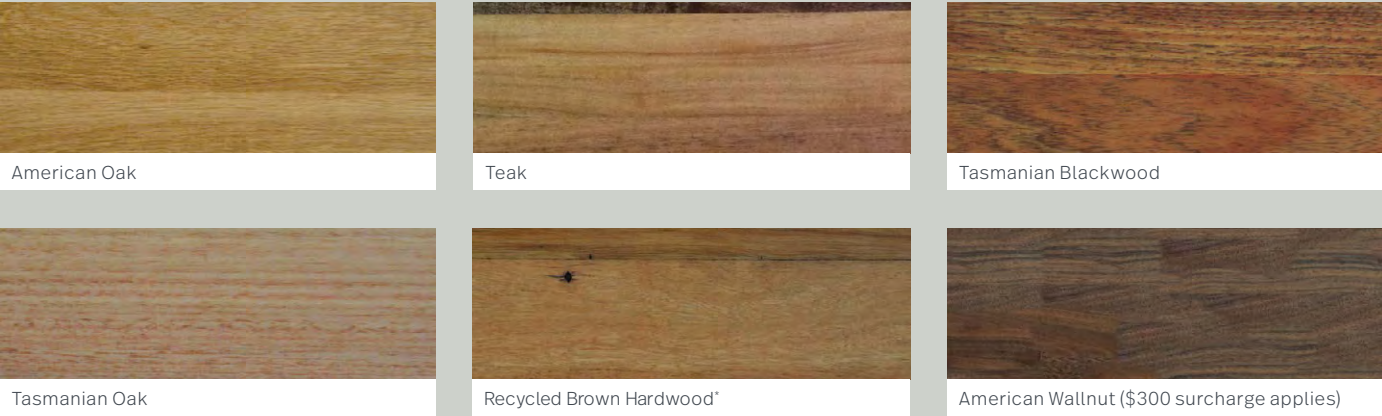
For all of the many Silestone options go to [silestoneoceania.com](https://silestoneoceania.com)



**Caesarstone/Silestone Upgrade**  
40mm/60mm stone surcharge

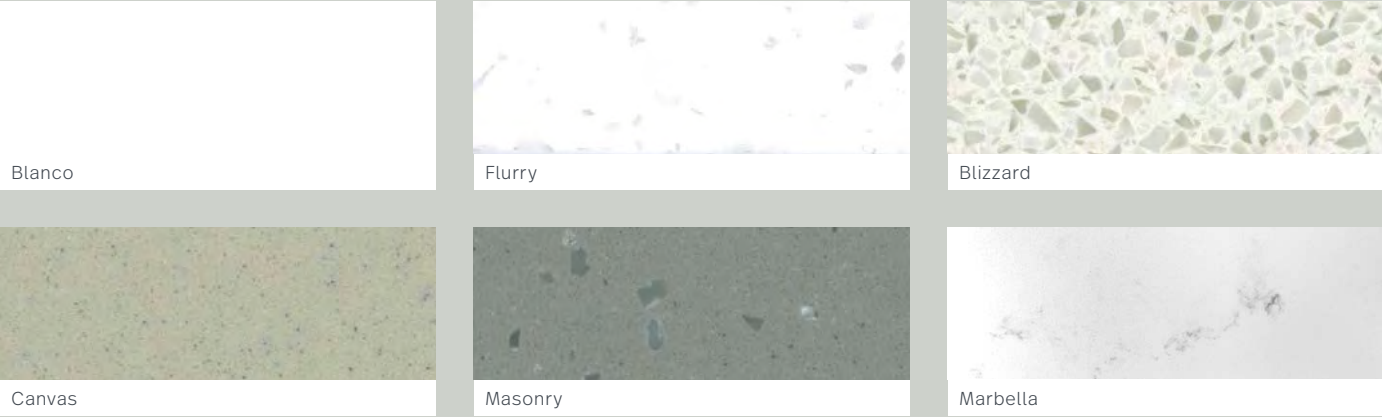
Top Size	40mm	60mm
600mm	\$260	\$500
750mm	\$280	\$530
900mm	\$320	\$550
1200mm	\$350	\$630
1500mm	\$400	\$710
1800mm	\$450	\$800

**Top—Timber** 30–35mm solid – timeless, unique, sustainable

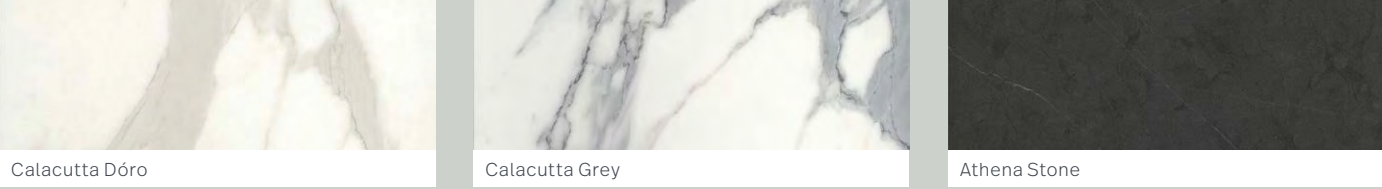


\*Undercounter basin option not available with timber tops.

**Top—Symphony** 20mm acrylic – economical, hard wearing, repairable



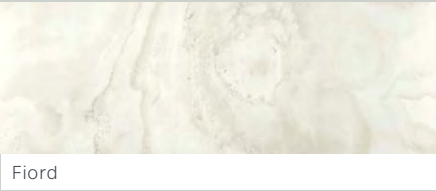
**Top—Xenolith** 15mm – economical, hard wearing, looks like marble



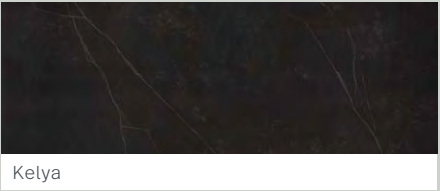


# Vanities

**Top—Dekton®** 12mm ultra compact – high heat, scratch, stain and chemical burn resistant



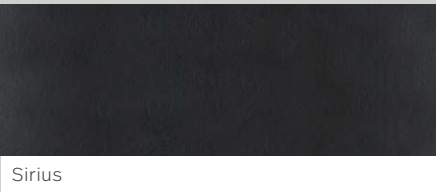
Fiord



Kelya



Radium



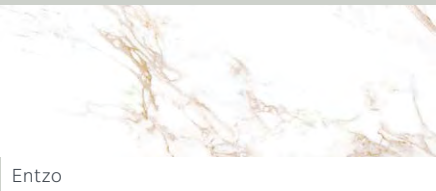
Sirius



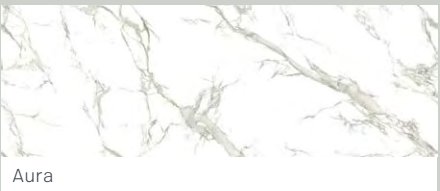
Ventus



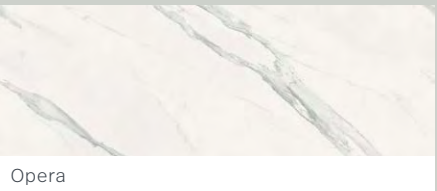
Nilium



Entzo



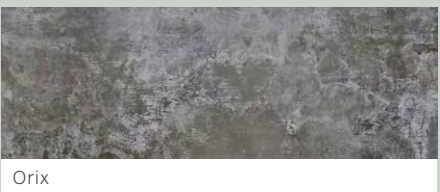
Aura



Opera



Trillium



Orix

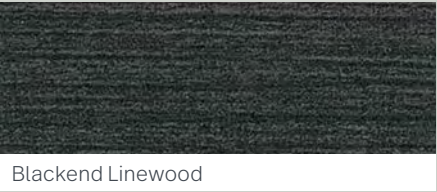


DEKTON®

**Dekton Upgrade**  
40mm/60mm stone surcharge

Top Size	40mm	60mm
600mm	\$500	\$580
750mm	\$530	\$610
900mm	\$550	\$630
1200mm	\$630	\$710
1500mm	\$710	\$790
1800mm	\$800	\$880

**Cabinet—Duragrain**



Blackend Linewood



Burnished Wood



Concrete Formwood



Jericho



White Nuance



Fossil Riven



Marni Lini



Lustrous Elm



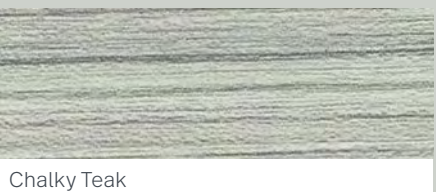
Cavia Lini



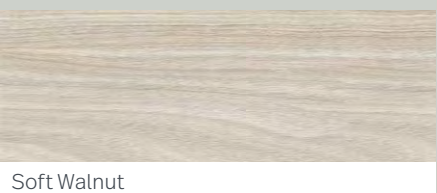
Rural Oak



Truffle Lini



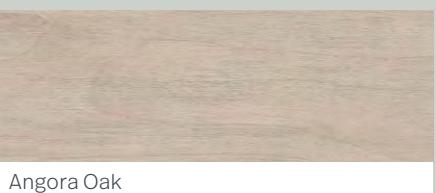
Chalky Teak



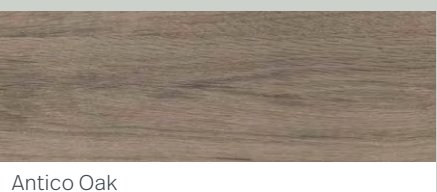
Soft Walnut



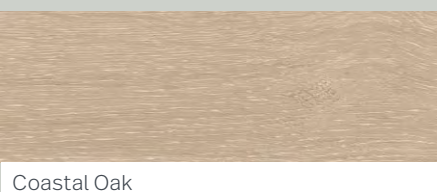
Strata grey



Angora Oak



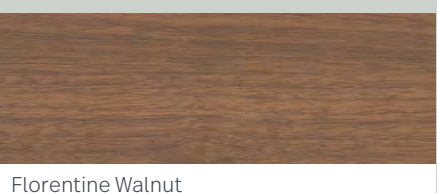
Antico Oak



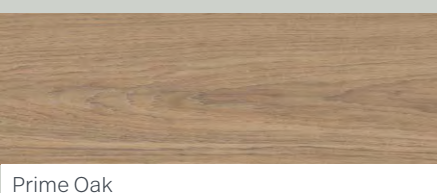
Coastal Oak



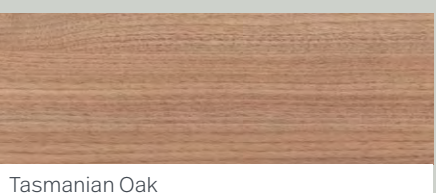
Empire Oak



Florentine Walnut



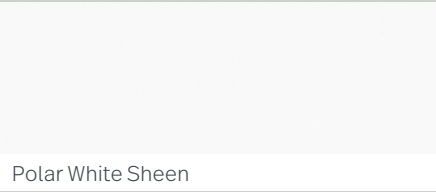
Prime Oak



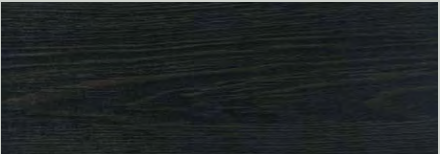
Tasmanian Oak



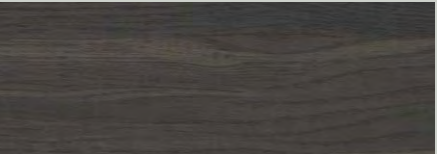
Cabinet—Duragrain (cont.)



Polar White Sheen



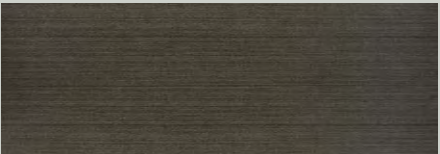
Black Woodmatt



Bottega Oak



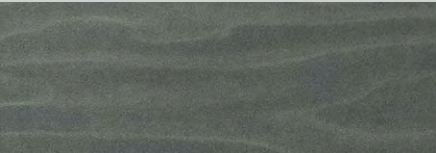
Estella Oak



Truffle Lini Sheen



Marni Lini Sheen



Smoked Birch Ply



Char Oak



Natural Oak Matte

Cabinet—Ravine 18mm



Black Wedge



Café Oak



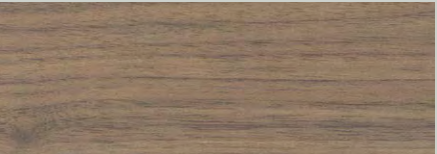
Drifted Oak



Natural Oak



Tessuto Milan



Natio Walnut

Cabinet—Ultramatte 18mm – Available only on the Oxford range.



Black



White



Oxford



Mink

Ultramatte is a very durable and hard wearing finish. It is fingerprint and stain resistant making it easy to clean.

# Handles

We have many options of handles to complete the look of your bathroom. From fingerpulls to handles in metal and wood you will find the perfect finish and choice to complement your interior styling.

## Fingerpull



Reverse fingerpull Paint or Duragrain



Recessed fingerpull Paint or Ravine

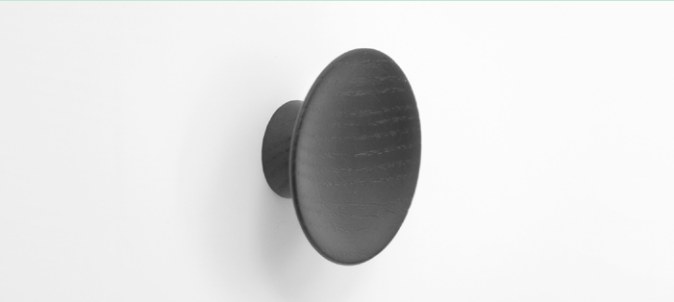


J fingerpull Paint



L fingerpull Paint or Duragrain

# Standard handles



Flat Knob Timber—50mm FREE



Shell - Brushed Nickel (also available in Black Matte) —64mm FREE



Shell - Polished Chrome —64mm FREE



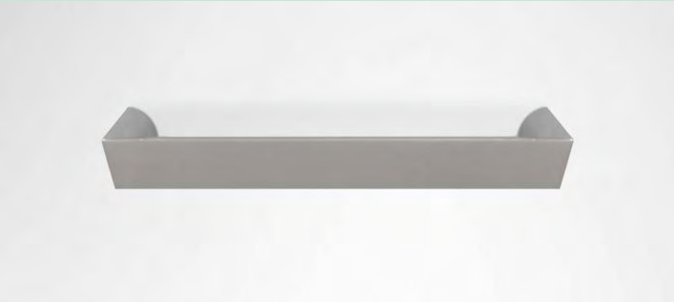
Shell - Polished Brass —64mm FREE



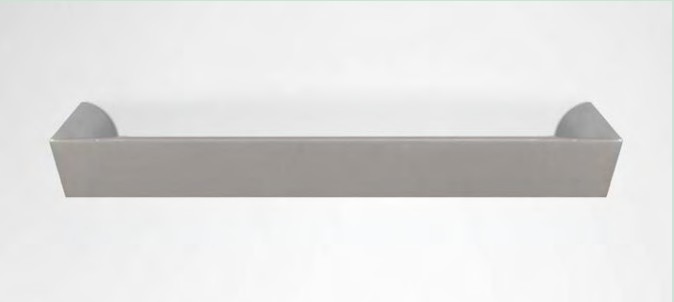
Polished Chrome Stainless Steel—160mm / 288 mm FREE



Matte Black Stainless Steel—160mm / 288 mm FREE



Flat D Polished Chrome—96mm FREE



Large Flat D Polished Chrome—128mm FREE



Square Bow Brushed Brass—192mm FREE



Polished Copper Bow—160mm FREE

Replacement standard handles—\$20

# Deluxe handles



Black & Copper T-bar Timber—224mm \$20



Antique Copper—160mm / 224mm \$20



Black Matte & Brass Knob—50mm \$20



Flush Black Matte—160mm / 224mm \$20



Grey & Walnut Knob Timber—50mm \$20



White & Oak Knob Timber—50mm \$20



Oak Timber—224mm \$20



Flush Oak Timber—160mm \$20



Brushed Brass Top Pull—224mm \$20



Black Matte Top Pull—224mm \$20

Replacement deluxe handles—\$35