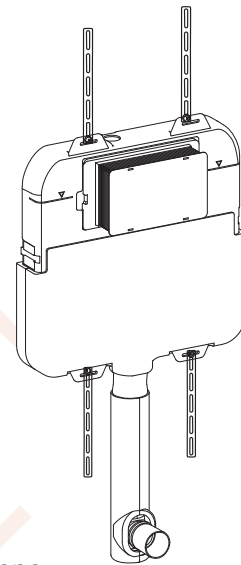
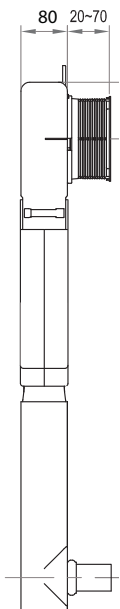
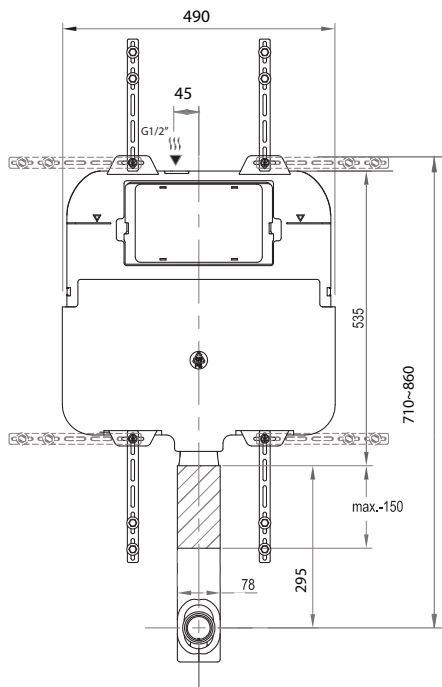




## Inwall Concealed Cistern

**Product Code: PA110**

Suitable for use with any Parisi wall faced pan.  
Front actuation. Push plate access. Adjustable height.  
For Glass or metal button sets refer to PA111 (pneumatic).



### Specifications

|                          |   |
|--------------------------|---|
| <b>Material</b>          | — High Density Polyethylene   |
| <b>Water Inlet</b>       | — Top G1/2" External  |
| <b>Flush</b>             | — Front flush   |
| <b>WELS</b>              | — 4 star rating 4.5/3L 3.3L avg flush   |
| <b>Operation</b>         | — Mechanical  |
| <b>W x D x H</b>         | — 490 x 80 x 710~860mm  |
| <b>Compatible Panels</b> | — PA221-227 Tondo Push Panel<br>— PA231-237 Blade Push Panel  |
| <b>Pan Compliance</b>    | — Suitable with any PARISI wall faced pan<br>Compatible with any branded pan supplied with 40mm kee seal, 50mm kee seal to be sourced independently |
| <b>Warranty</b>          | — 3 Years parts & labour, further 12 years parts only   |
| <b>Fixing Details</b>    | — Wall Fixing Kit included  |
| <b>Installation</b>      | — Refer to instructions in packaging  |

PARISI

