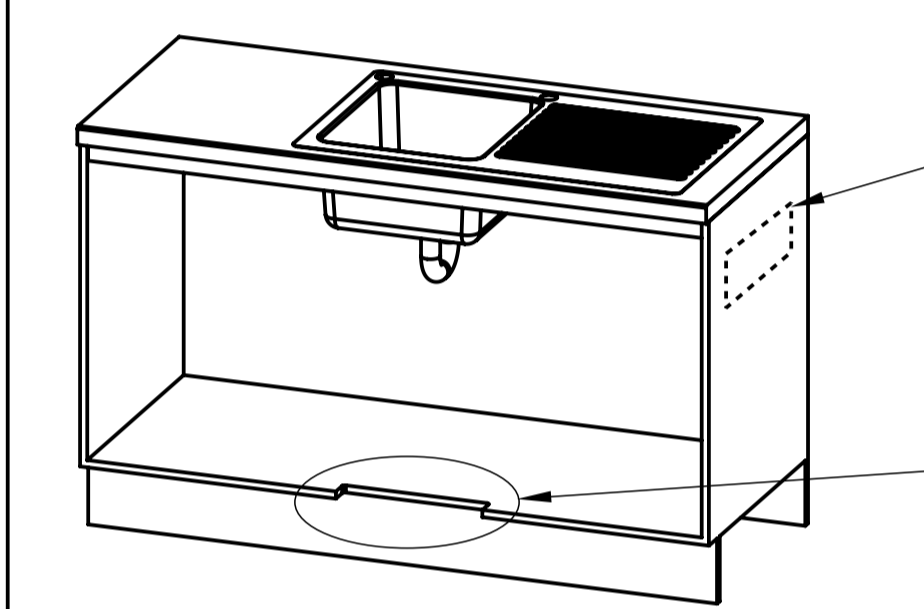
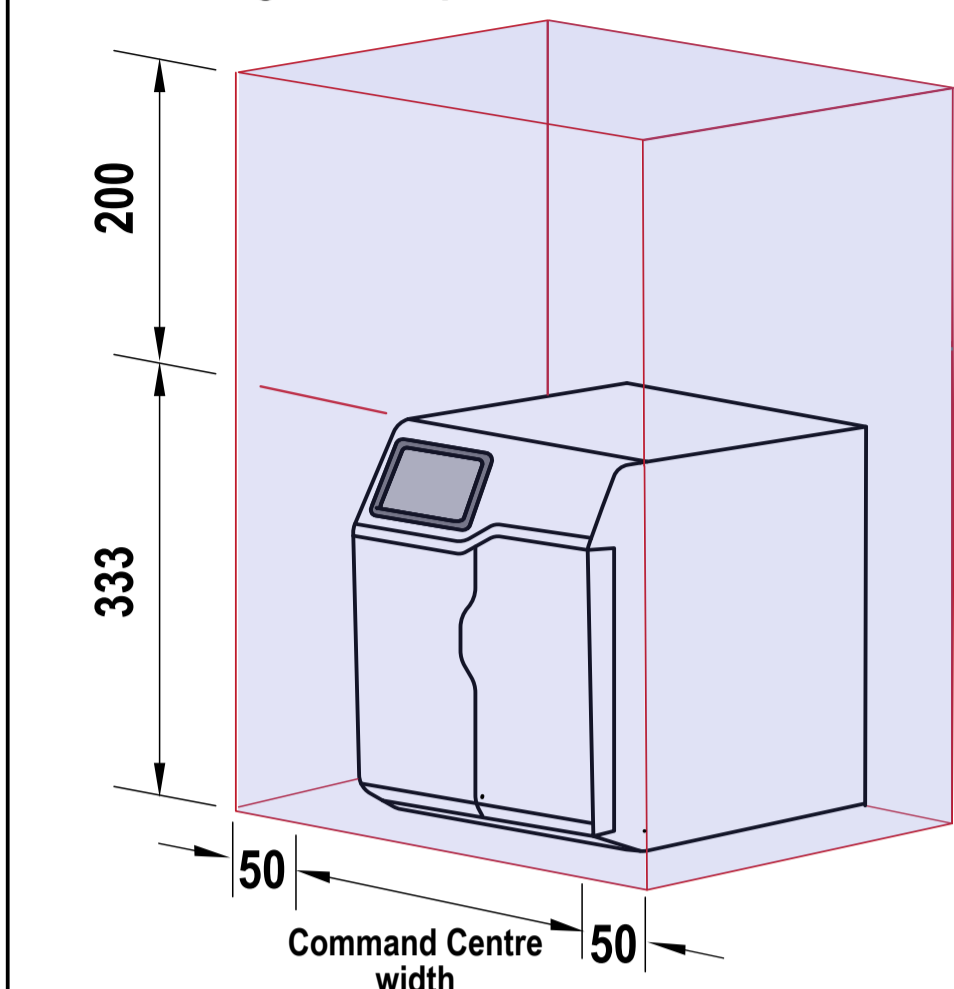


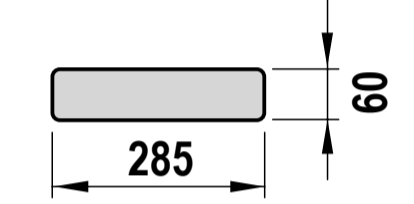
**Ventilation requirements** Contact your local service provider if ventilation is not suitable

**Clearance envelope**

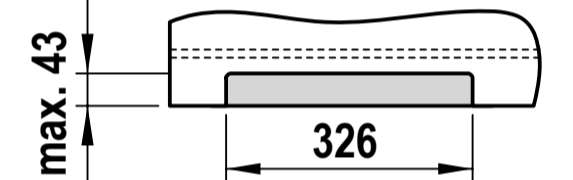
Position the Tap and the Command Centre as close together as possible.



Air outlet louvre (if required)  
Cut-out in door/wall, towards the top of the cabinet

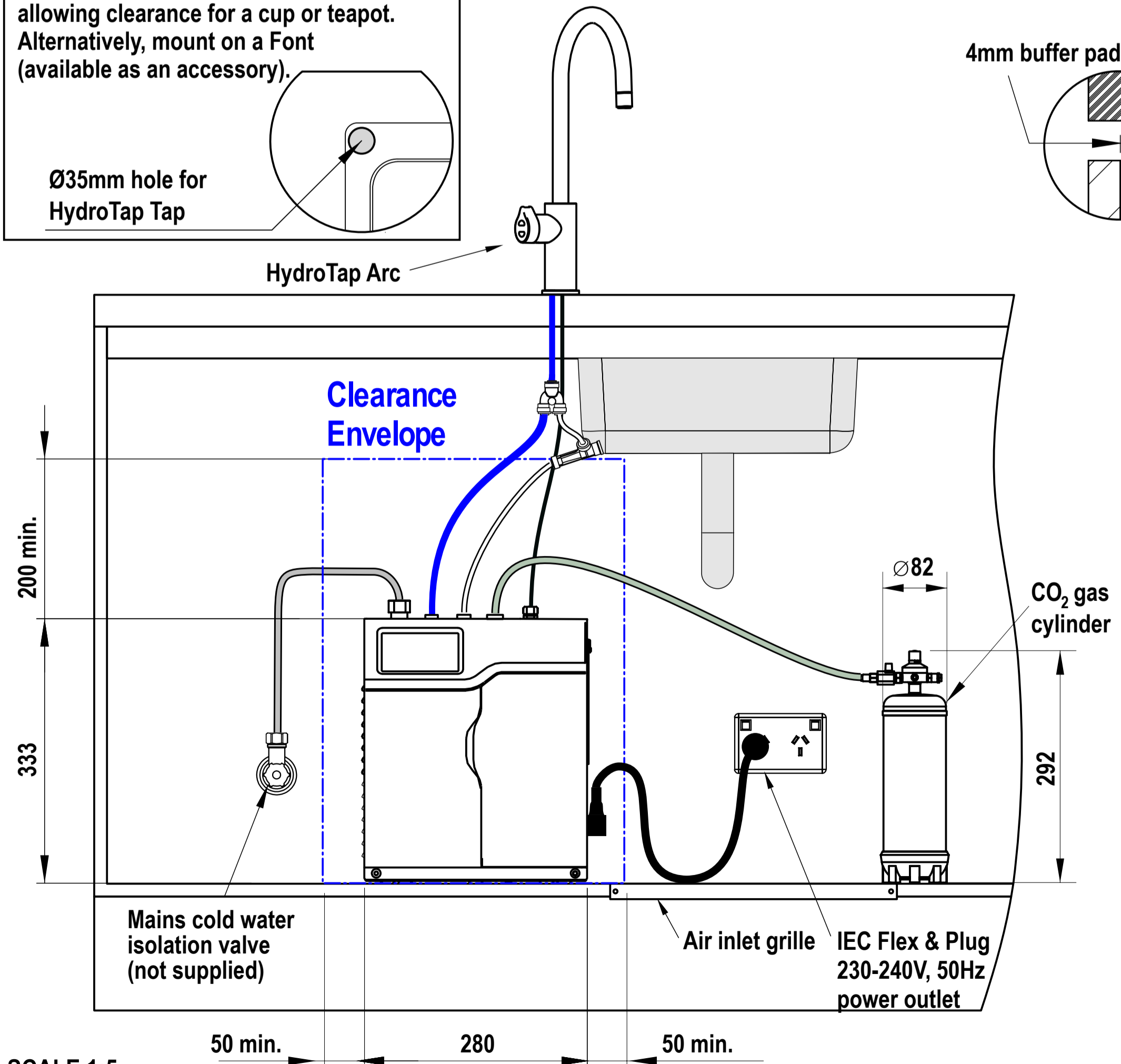
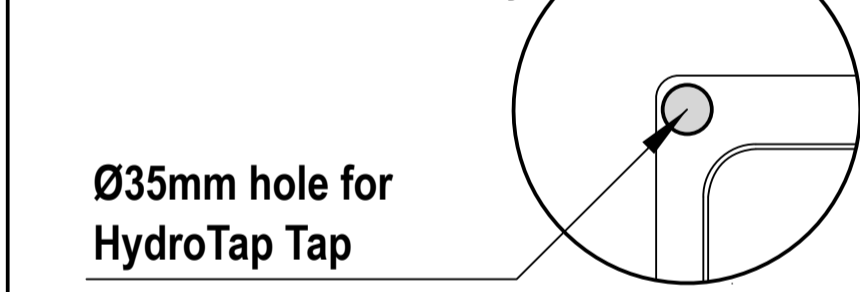


Air inlet cut-out (required)  
Cut-out in cabinet floor



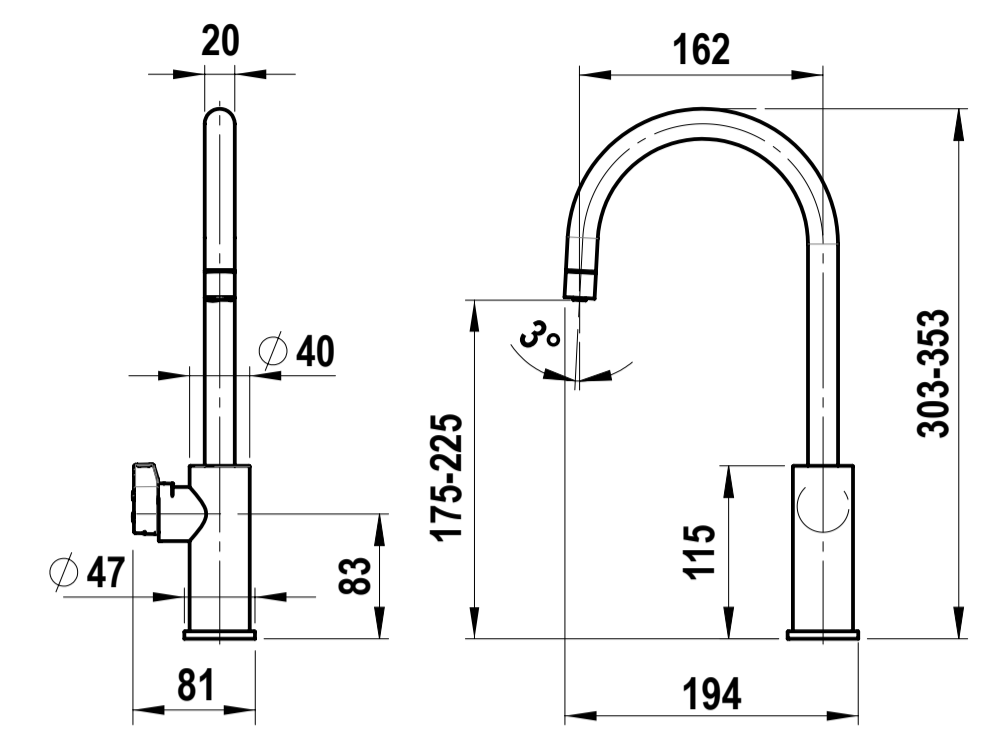
**Tap Positioning**

Position the Tap to dispense into the sink, allowing clearance for a cup or teapot. Alternatively, mount on a Font (available as an accessory).

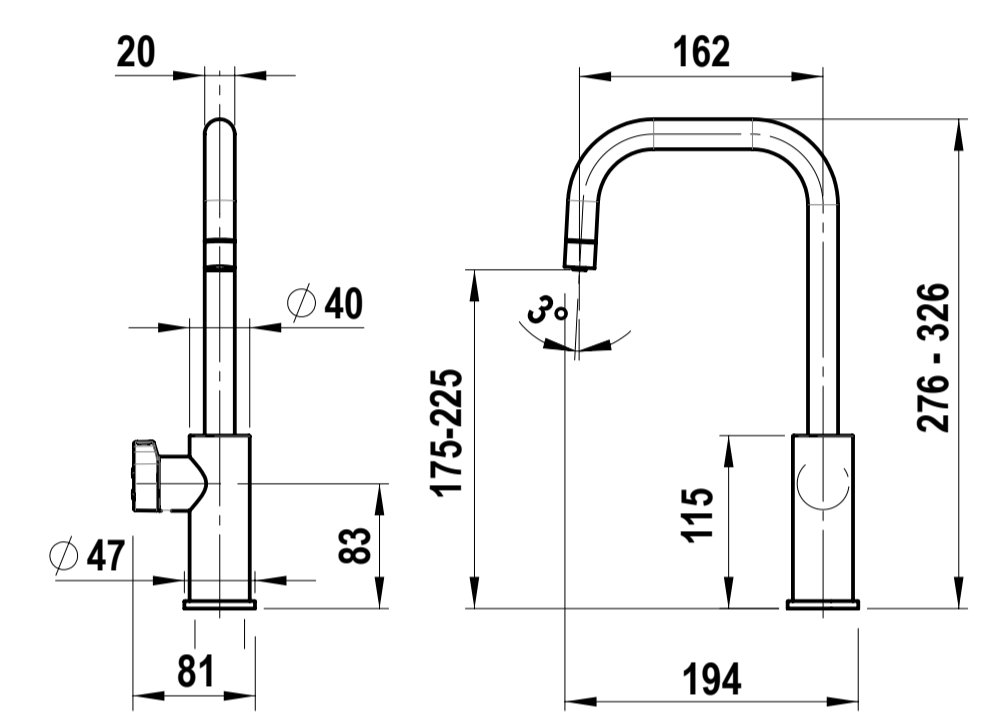


**HydroTap Tap options**

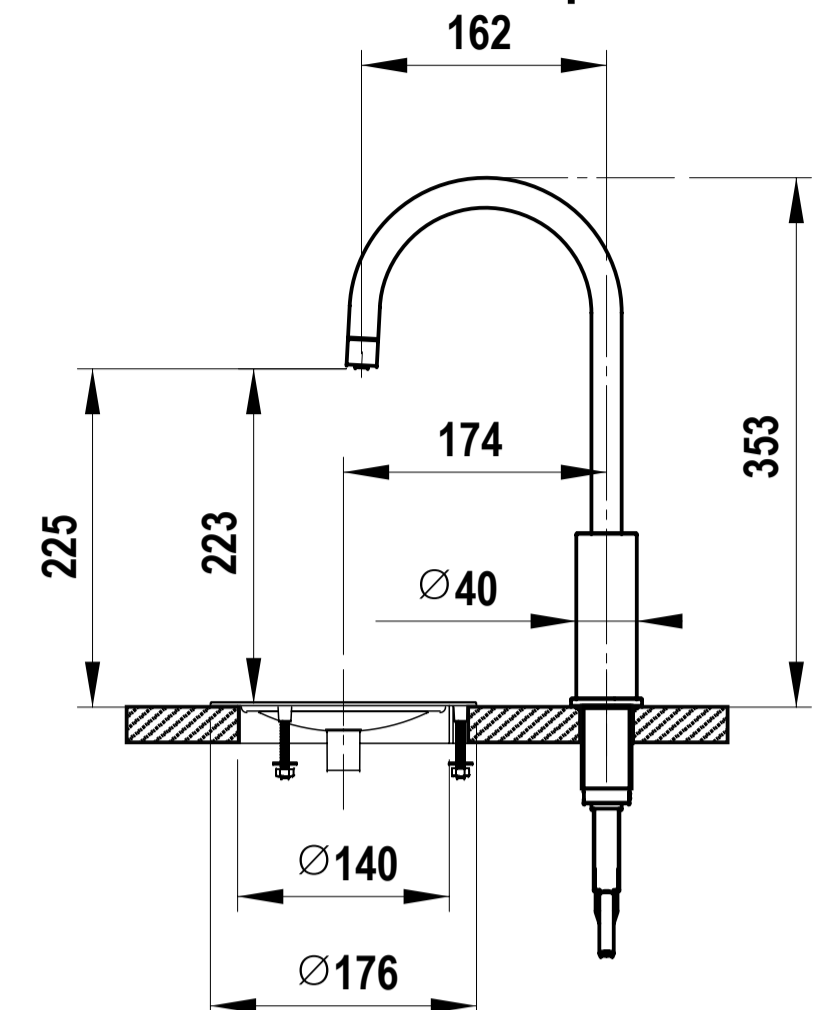
**HydroTap Arc Tap**



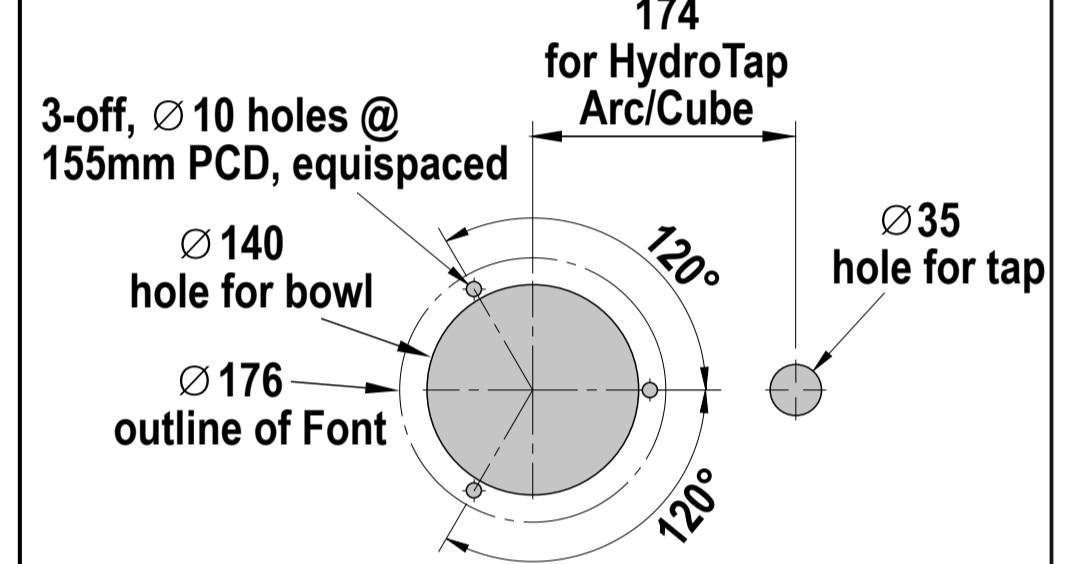
**HydroTap Cube Tap**



**Standalone Font with Arc Tap**



**Cutting detail**



**HydroTap G5  
CS Home**

shown with HydroTap Arc