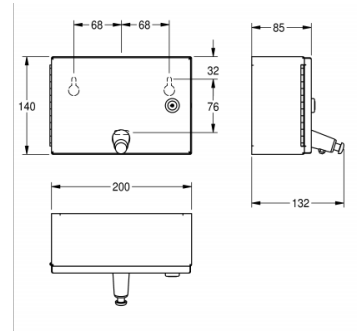


SOAP DISPENSER

RODX619 | 2000090068

ARTICLE GROUP (AG) : **RODX619** | ARTICLE FAMILY (AF) : **Soap dispensers** | PRODUCT GROUP (PG) : **Accessories** |
MODEL RANGE : **RODAN**



Soap dispenser for wall mounting, stainless steel, surface satin finished, material thickness 0.8 mm, folded front cover, cylinder lock with Franke standard key, suitable for liquid soaps and lotions, 1 liter soap tank, push button on front, incl. stainless steel screws and dowels.

TECHNICAL DATA

Filling Quantity	1 LITRE
Gross Weight	1.24 kg
Lock	KEY-LOCK
Material	STAINLESS-STEEL
Material Code	1.4301
Material Thickness	0.80 mm
Net Weight	1.12 kg
Overall Depth	132.00 mm
Overall Height	140.00 mm
Overall Width	200.00 mm
Surface Finish	SATIN-FINISHED
Type Of Consumable	LIQUID-SOAP
Type Of Fixing	SCREW
Type Of Mounting	WALL-MOUNTING
Type Of Operation	MANUAL-OPERATION
Type Of Soap Container	INTEGRATED-REFILLABLE-BAG

SOAP DISPENSER

RODX619 | 2000090068

ARTICLE GROUP (AG) : **RODX619** | ARTICLE FAMILY (AF) : **Soap dispensers** | PRODUCT GROUP (PG) : **Accessories** |
MODEL RANGE : **RODAN**

CONSUMABLES



LIQUID SOAP

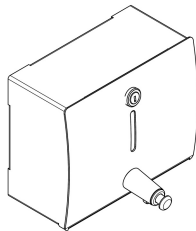
2000057162



LIQUID SOAP

2000057168

SIMILAR PARTS



SOAP DISPENSER

2000057382
