

**HARMONY BASSINI**  
by Timberline



---

## INSTALLATION GUIDE

# INSTALLATION INSTRUCTIONS

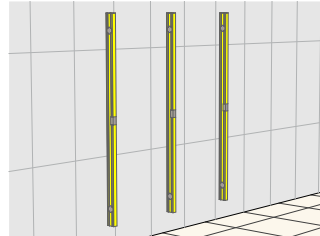
**FIRST THINGS FIRST!** BEFORE proceeding with installation, please check goods carefully. If goods are incorrect, faulty or damaged, DO NOT proceed with installation and contact Timberline immediately. No claims for damages/defects will be accepted after installation.

## 1. ENSURE YOUR WALL IS FLAT & PLUMB

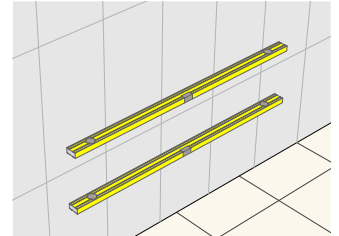
Before starting, check that your wall is plumb and flat. If not, the cabinet will need to be packed out so that it is sitting level, otherwise the cabinet will twist, causing the doors and drawers to be out of alignment and not function correctly.

It is recommended that you do NOT tile in your cabinets – tiles should extend behind the cabinet and clearance allowed for doors and drawers to open (filler panel required where cabinet is going hard against a wall).

It is recommended that vanities are installed over 300mm from any wet area such as baths, spas and showers.



Ensure wall is plumb

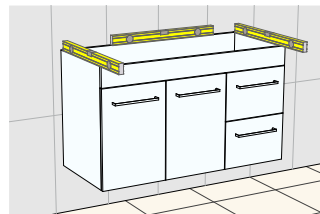


Ensure wall is flat (no gaps between wall and level)

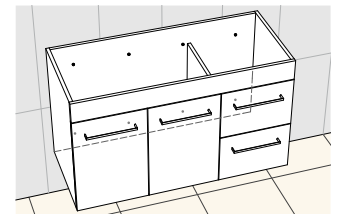
## 2. FIX YOUR CABINET, MAKING SURE IT IS LEVEL & PLUMB

Fix your cabinet using screws through the solid back of the cabinet. The screws should be suited to the stud material and have a pan or counter sunk head. Provide a horizontal row of screws within 100mm vertically from the top of the cabinet at a maximum of 300mm horizontal spacing. The screws closest to the left and right edge of the cabinet should be within 100mm of each side.

For vanities, ensure that the cabinet is level and plumb in all directions, using a spirit level. If not remove the cabinet and pack or straighten the wall accordingly. DO NOT install the top until you are sure that the cabinet is plumb and level in all directions.



Vanities: Check cabinet is level and plumb



Vanities: Fix as noted above

## 3. ADJUST THE DOORS & DRAWERS

After installation every cabinet will need some adjustment as the doors and drawers move during transport and installation. The cabinet MUST be level before adjustments are made. It is the responsibility of the installer to ensure these adjustments are done correctly. No warranty claims will be considered until this adjustment process is completed. Refer to the instructions below.

## 4. FIT THE TOP & SEAL CABINET

For vanities, fit the top to the cabinet using a thin bead of non-acidic silicone on all four edges. Seal all cabinet edges against floor and wall to prevent water penetration. DO NOT silicone timber tops to cabinets - refer to instructions on website.

Overtightening of the waste can lead to stress and damage to the basin or top. We recommend that the wastes be tightened by hand only, and then silicone sealed.

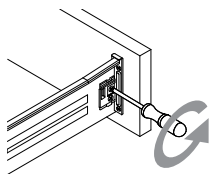
## 5. SOMETHING NOT QUITE RIGHT?

If you have a problem - and have carefully checked all the steps above to ensure it has been done right - give us a call. We'll be glad to help. To make it easy for us, please email some photos of the problem and of the job detail label (this can be found on the underside of a drawer base) to [service@timberline.com.au](mailto:service@timberline.com.au) including photos of the levels as shown in Step 1 and Step 2 above.

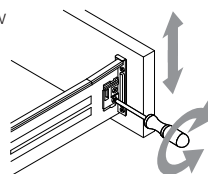
## 6. ADJUSTMENTS

### STEEL DRAWER ADJUSTMENT | UP OR DOWN

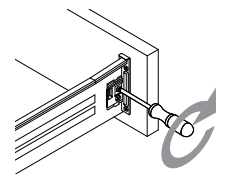
1. Loosen the centre screw.



2. Turn bottom screw to move drawer front up or down.

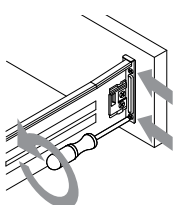


3. Tighten centre screw.

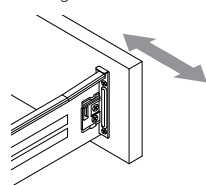


### STEEL DRAWER ADJUSTMENT | LEFT OR RIGHT

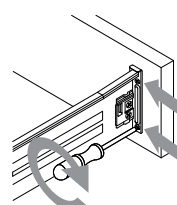
1. Loosen two drawer front screws.



2. Slide drawer front left or right.



3. Tighten two drawer front screws.



4. Adjust angle of tall drawer fronts with gallery rails by sliding cover back and adjusting plastic nut.

