



# HYDROTAP G5 CS ELITE PLUS MATTE BLACK



CHILLED



SPARKLING

FILTERED

## Order Code H5E787Z03AU

Zip HydroTap Design Range Chilled, Sparkling, Filtered water system features a single under bench command centre including full colour interactive touch screen display with pin code protection and customisable settings including 2 energy saving modes including ON/OFF timers and 2 hour sleep mode, 'Quiet' mode with automated intelligent fan speed adjustment, antimicrobial protection impregnated into key water paths for enhanced hygiene, 100% water efficient air cooled technology, 0.2 micron water filtration, and 2 disposable CO2 cylinders.



Manufacturing Code H5E787Z03AU

Capacity Residential

**Tap** Zip HydroTap Design Range ELITE PLUS Tap (Matte Black)

**Water Pressure** Min 250kPa - Max 700kPa

**Water Connection** 1/2" BSP (G1/2)

**Water Supply Requirements** Cold

**Water Valves** Integrated 500kPa Pressure limiting valve and Dual Check Valve

**Power Rating** 0.18kW 220-240V 50Hz

**Power Supply** 1 x 10 Amp socket outlet

**Dimensions** W280mm x D406mm x H333mm

**Product Approvals** WaterMark, RCM, ARC

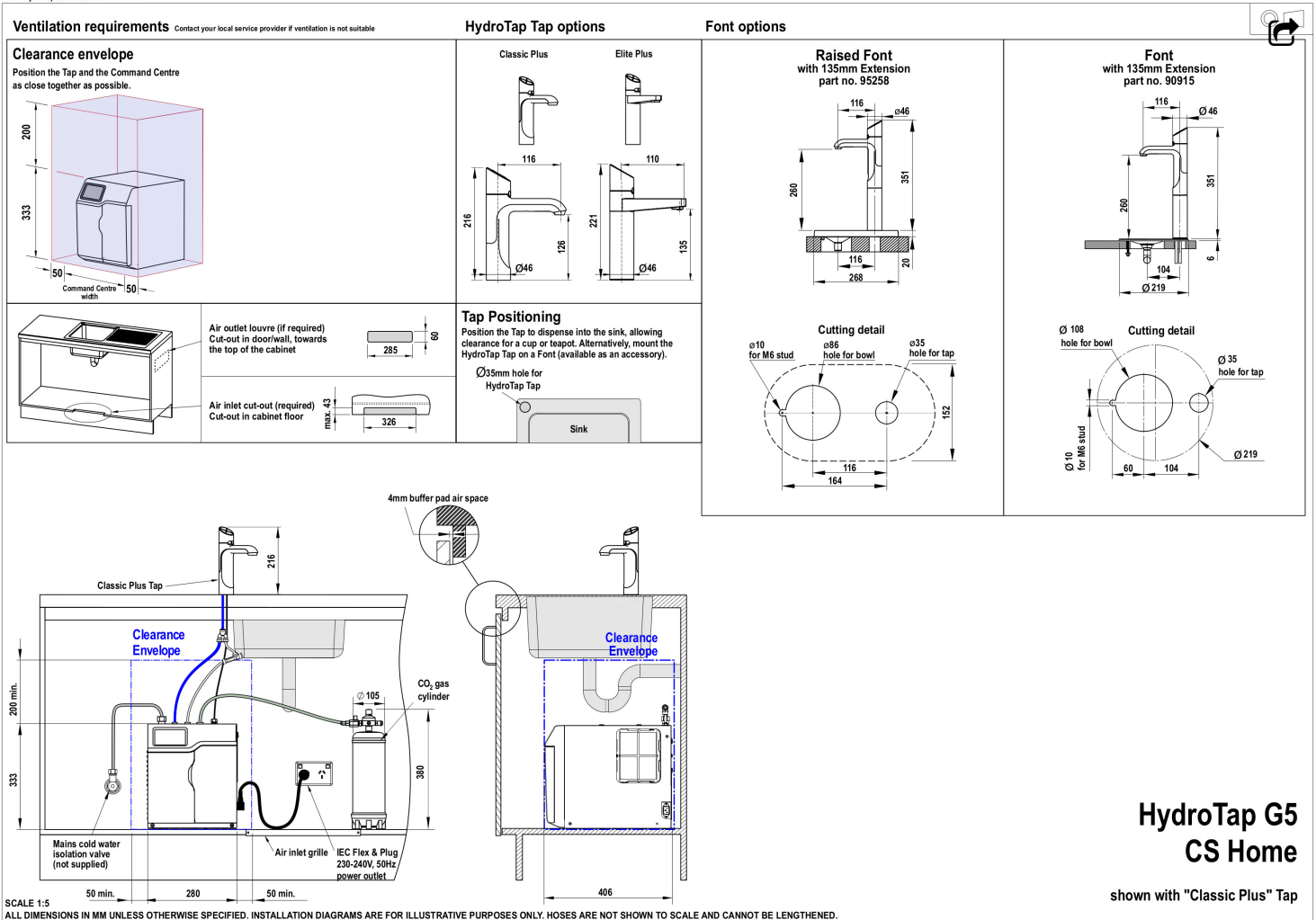
**Warranty** 5 years (appliance warranty 36 months plus additional 24 months tank warranty)

# Installation Requirements

1. Installation and connection of your Zip HydroTap must be carried out by a qualified person, observing national and local regulations.
2. You will require suitable mains electrical and drinking water connections, plus waste water drainage all within 1 metre of the product.
3. Zip Micro is air-cooled so discrete cabinetry cut-outs are required for ventilation.
4. Installation on most bench tops is straightforward however some stone bench tops may require a specialised cutting service.
5. If you live in a hard water area, we recommend installation of a Zip scale filtration kit.
6. Installation by Zip Professional Service can be arranged with a phone call or through [www.zipwater.com/book-service-visit](http://www.zipwater.com/book-service-visit)

## Installation Detail

BKL2 HydroTap G5 v1.03 03.23 CS Home



SCALE 1:5  
 ALL DIMENSIONS IN MM UNLESS OTHERWISE SPECIFIED. INSTALLATION DIAGRAMS ARE FOR ILLUSTRATIVE PURPOSES ONLY. HOSES ARE NOT SHOWN TO SCALE AND CANNOT BE LENGTHENED.

**HydroTap G5  
 CS Home**  
 shown with "Classic Plus" Tap