

## Important Information

- \* Not suitable for gravity feed systems.
- \* Isolating stop taps must be fitted to the hot & cold water supply connections. (Part No. 842018C - Mini cistern 1/4T)
- \* All pipework must be thoroughly flushed prior to installation, as foreign materials may block the flow regulating device and reduce the flow of water.
- \* The supplied mixed outlet hose is 500mm long. For installations where the outlet is further away from the mixer body, additional hose can be added to extend.
- \* The body come pre-assembled with 3 elbows to stop the hoses interfering with draw operation in vanities. The elbow can be rotated by 1/2 turn to vary the hose direction. The elbows can be removed and the hoses can be screwed directly into the body if required.
- \* Compatible with Urbane II & Liano II hob swivel outlets. Body kit, Trim kits & Outlets are supplied in separate boxes. For Trim kit & compatible outlet installation, follow the instructions supplied in the box.

## Installation

- 1) Flexible Tail Mixer Connections: Apply suitable lubricant to 'O' rings (7). Fit flexible tail (12) (with red indication) into inlet hole marked with a Red Dot. Hand tighten the tail, ensuring the 'O' ring (7) has fully entered the sealing bore to provide a watertight joint, fit flexible tail (with blue indication) into the hole marked with blue dot then fit the remaining hose in the remaining hole in a similar way.
- 2) Slide the fibre washer (1) over the thread of body (2), Pass the hoses through the hole in the deck, Insert mixer body (2) together with washer (1) into deck hole, set the orientation of the mixer body (2) by keeping the indication mark pointing forward, This will determine the handle orientation, See (Fig. 2). Fit washer (4) together with flat seal (3) over thread of mixer body (2) as shown in (Fig.1). Screw clamp ring (5) onto threaded tube until it contacts washer (4) & the flat seal (3) has contacted the underside of the deck. Tighten two screws (6) using a 3mm allen key until mixer assembly is clamped firmly to the deck. DO NOT OVERTIGHTEN.
- 3) Flexible Tail Inlet Connections: Connect the other end of the blue flexible hose (12) to the cold isolating stop tap, Connect the red flexible hose (12) to the hot isolation stop tap. If compatible swivel outlet is already installed then connect the remaining flexible hose of the mixer to the inlet connection thread of swivel outlet. Hand tighten all fixing nuts (8) until rubber cone contacts the sealing face of the connection end, then tighten a further one turn to provide a watertight joint.
 

**Important:** Flexible hoses must not be kinked, twisted or in tension when installed.  
(Minimum Bend Radius:- 50mm). Do not install flexible hoses where subject to ultra violet light.
- 4) Turn on water supply and check for leaks.

## INSTALLATION INSTRUCTIONS

<b>IMPORTANT</b>	
<b>Pressure &amp; Temperature Requirements.</b>	
• Hot and cold water inlet pressures should be equal.	
• Static inlet pressure range : 150-1000 kPa	
New Regulation:- 500 kPa maximum static pressure at any outlet within a building. (Ref. AS/NZS 3500.1)	
• Maximum hot water temperature : 80°C.	
<b>Deck Requirements</b>	
• Deck thickness : 40mm maximum	
• Tap body hole (in deck) : Ø34-36mm	

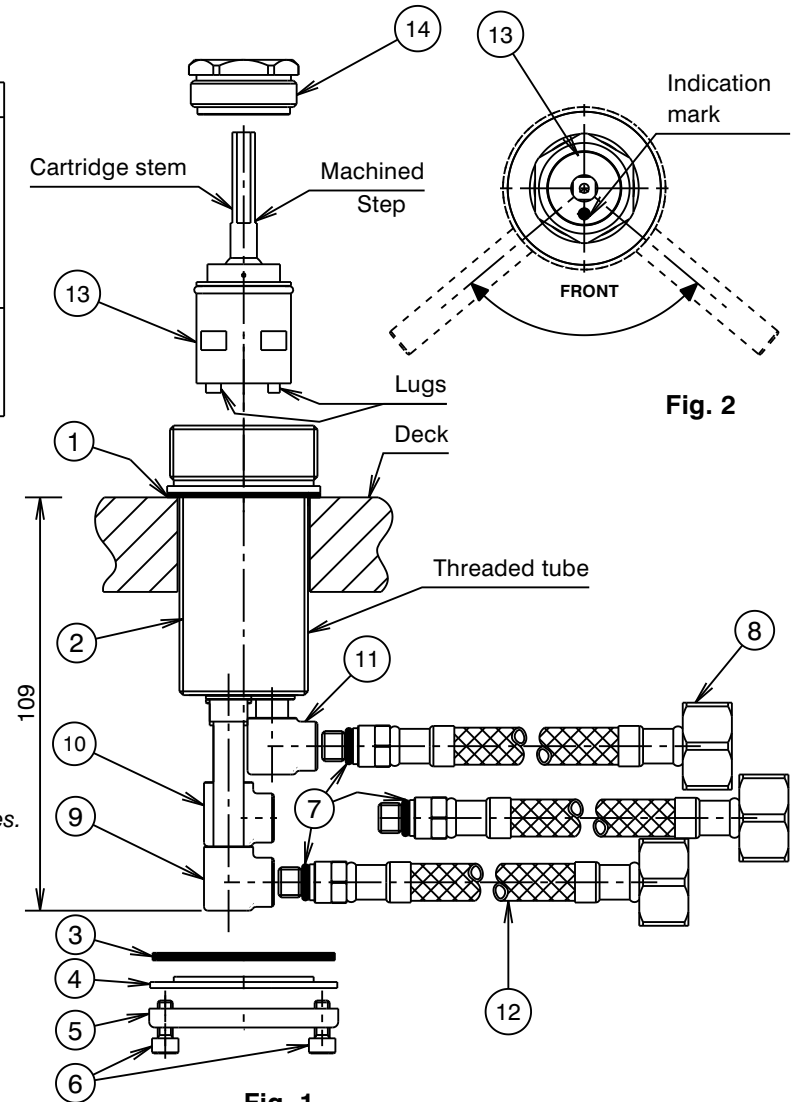
## Replacing Cartridge

- 1) Turn off hot and cold water supplies.
- 2) Using a 26mm socket, unscrew nut (14) then lift out old cartridge (13).
- 3) Ensure inside face of mixer body (2) is clean. Check that seals are in position in base of new cartridge (13). Fit new cartridge (13) into mixer body (2), taking care that two lugs on base of cartridge (13) fit into mating holes in mixer body (2).
- 4) Screw in nut (14). **Important:** Nut (14) should be tightened to a torque of 7.5 Nm.

## Removing Elbows

If required, elbows (9),(10)& (11) can be replaced by hoses.

- 1) Remove elbows in order from longest to shortest.
- 2) Apply suitable lubricant to 'O' rings (7). Fit flexible hose (12) (with cold indication) into inlet hole marked with a Blue Dot in underside of mixer body (2). Fit flexible hose (12) (with red indication) into inlet hole marked with a Red Dot in underside of mixer body (2). Hand tighten hoses, ensuring the 'O' rings (7) have fully entered the sealing bores to provide a watertight joint.



## INSTALLATION INSTRUCTIONS

- \* Trim kit items (2-11) & body kit items (1, 12, 13 & 14) are supplied in separate boxes.
- \* Trim kit items (3), (5), (7) & (10) are available in different colour finishes and styles.

### Installation

- 1) Ensure that universal hob mixer body (1) 99687 was installed at the required position and orientation. The handle operates symmetric to the indication mark on the cartridge, see **Fig. 3**. To change the orientation of the handle operation, loosen the screws (14), reposition the mixer body as required and re-tighten the screws (14). **DONOT OVERTIGHTEN**
- 2) Ensure O'ring (2) is fitted into groove under the flange (3), screw flange (3) onto the thread of body (1) and hand tighten until 'O'ring firmly contacts deck. Clean all contact surfaces of swivel cap (5), 'O'ring and thrust washer(4), ensure they are clean and free from any debris. Lubricate the thrust washer (4), underside of cap (5) and 'O'ring then fit the thrust washer(4) around the nut inside mixer body (1). Ensure that the cartridge stem is in closed position, fit the swivel cap (5) along with 'O'ring into the mixer (1) and ensure the swivel cap cut-out is positioned as shown in **Fig.2**. Fit the insert (6) over the cartridge stem and push it down. Fit the handle (7) taking care that it is pushed fully onto cartridge stem & bottomed on the plastic insert (6) then tighten screw (8) using the 2.5mm allen key (11). Fit handle plug (10) together with 'O'-Ring (9) into handle (7) taking care not to damage decorative finish.

### Replacing Cartridge

- 1) Turn off hot and cold water supplies.
- 2) Carefully remove handle plug (10). Using 2.5mm allen key (11), loosen screw (8) and remove handle (7). Remove plastic insert (6) then extract swivel cap (5) and thrust washer (4) from the mixer body (1), taking care not to damage the decorative finish. **Hint:** The small end of the allen key (11) can be inserted into the slot in the swivel cap (5) and used to lever the cap vertically to remove.
- 3) Ensure inside face of mixer body (1) is clean. Check that seal is in position in base of new cartridge (13). Fit new cartridge (13) into mixer body (1), taking care that two lugs on base of cartridge (13) fit into mating holes in mixer body(1).
- 4) Screw on nut (12). **Important:** Nut (12) should be tightened to a torque of 7.5 Nm.
- 5) Clean all contact surfaces of swivel cap (5), 'O'ring and thrust washer (4), ensure they are clean and free from any debris. Lubricate the thrust washer(4), underside of cap (5) and 'O'ring then fit the thrust washer (4) around the nut (12). Ensure that the cartridge stem is in closed position with the flats on the stem orientated square with the outlet. Fit the swivel cap (5) along with 'O'ring into the mixer body (1) and ensure the swivel cap cut-out is positioned as shown in **Fig.2**. Fit the insert (6) over the cartridge (13) stem and push it down.
- 6) Fit handle (7) taking care that it is pushed fully onto cartridge stem, then tighten grub screw (10) using the 2.5mm allen key (11). Fit plug (10), taking care not to damage the decorative finish.
- 7) Turn on water supplies and check handle operation.

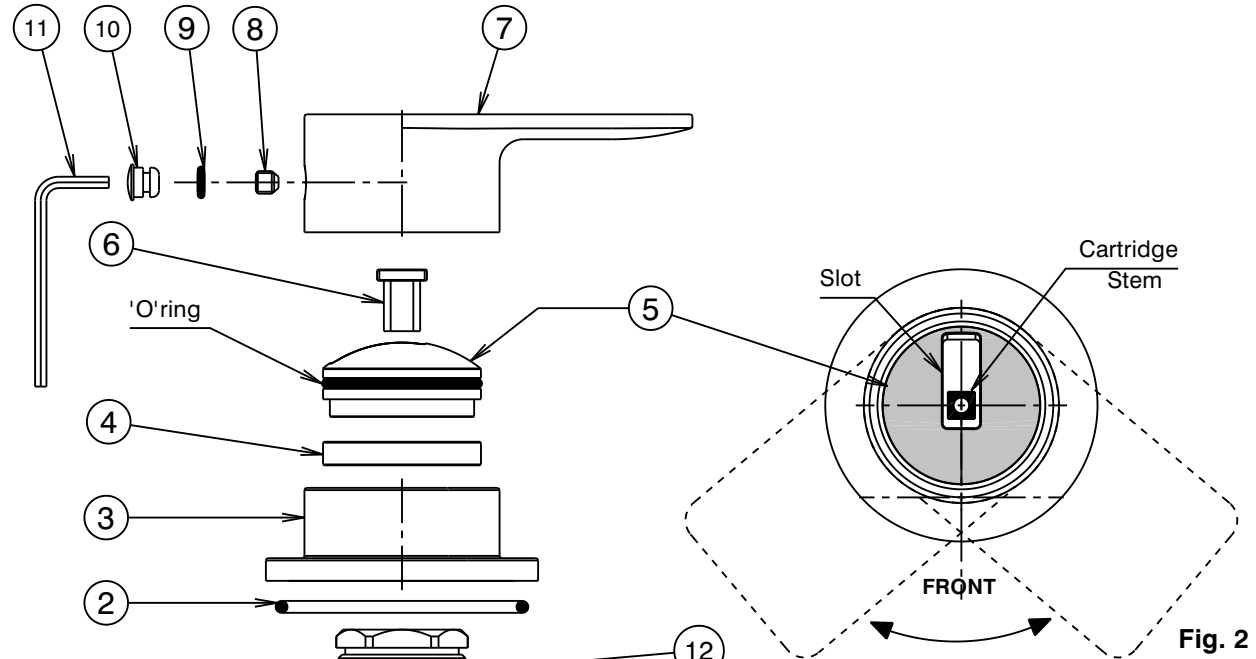


Fig. 2

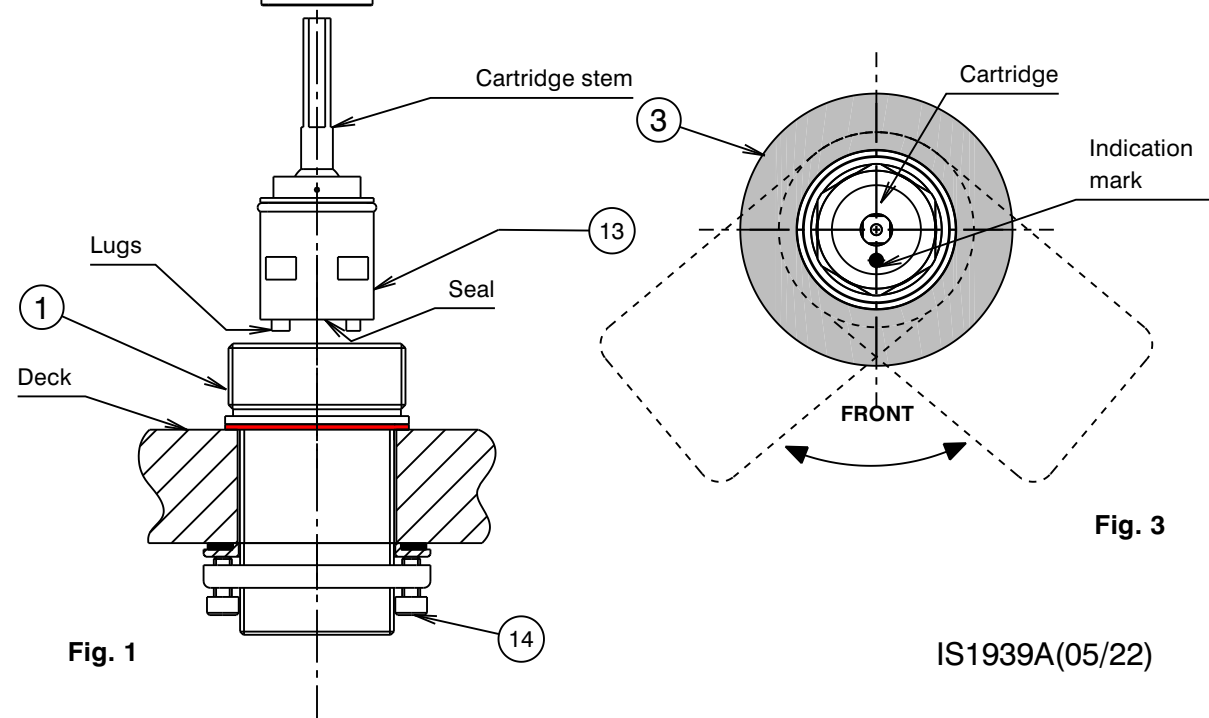


Fig. 3

Fig. 1

### INSTALLATION INSTRUCTIONS

#### Important Information

- \* Not suitable for gravity feed systems.
- \* Outlet is fitted with a 3.78L/min flow regulated aerator (14). This low flow rate may not be suitable for connection to some Instantaneous Gas Water Heaters, some Tempering Valves, some Solar Water Heaters & some Thermostatic Mixing Valves. Check with the manufacturers of these products. If required, the 3.78L/min flow regulated aerator insert (14) can be replaced with a 5.0L/min flow regulated insert (15) (Supplied) to get higher flow rate (See "Replacing Aerator Insert").
- \* All pipework must be thoroughly flushed prior to installation, as foreign materials may block the flow regulating device and reduce the flow of water.

#### Swivel angle adjustment

- 1) Outlet is fitted with 140° limited swivel retainer (2). To suit single bowl installations, swivel limit can be changed by swapping the 140° retainer (2) with 70° retainer (3) following below steps :- Remove screw (1) using allen key (4) & pull out outlet (5) from housing (6), remove retainer (2) from retainer groove. See Fig. 1
- 2) From spare bag, fit retainer (3) into retainer groove in outlet assembly (5), insert outlet together with retainer (3) into housing, push it all the way down until the retainer (3) hole is aligned with the screw (1) hole, turn the outlet (5) if required to align the holes. Tighten the screw (1) using allen key (4). DO NOT OVERTIGHTEN.

#### Installation

- 1) Ensure 'O'ring (7) is fitted into groove in the housing (6), insert housing (6) through the hole in the deck. Adjust position of the outlet to ensure "CAROMA" logo facing forward as shown (Fig.1)
- 2) Fit washer (11) together with flat seal (10) over threaded tail of housing (6) as shown (Fig.1). Screw clamp ring (12) onto threaded tube until it contacts washer (11) & the flat seal (10) has contacted the underside of the deck. Tighten two screws (13) using a 3mm allen key until outlet is clamped firmly to the deck. DO NOT OVERTIGHTEN.
- 3) To suit the installed position of Remote hob mixer 99687, the connection elbow (9) can be rotated upto 360°. Loosen the two screws (8) slightly using 2.5mm allen key (4), rotate connection elbow (9) to required position, tighten two screws (8) to secure the new position of connection elbow (9).

#### Replacing Aerator Insert

- 1) Remove aerator insert (14) with the spanner(16) provided.
- 2) From spare bag fit 5.0L/min aerator insert into spout of outlet, tighten it with spanner(16).

<b>IMPORTANT</b>	
<b>Pressure &amp; Temperature Requirements.</b>	
• Hot and cold water inlet pressures should be equal.	
• Static inlet pressure range : 150-1000 kPa	
New Regulation:- 500 kPa maximum static pressure at any outlet within a building. (Ref. AS/NZS 3500.1)	
• Maximum hot water temperature : 80°C.	
<b>Deck Requirements</b>	
• Deck thickness : 40mm maximum	
• Tap body hole (in deck) : Ø34-36mm	

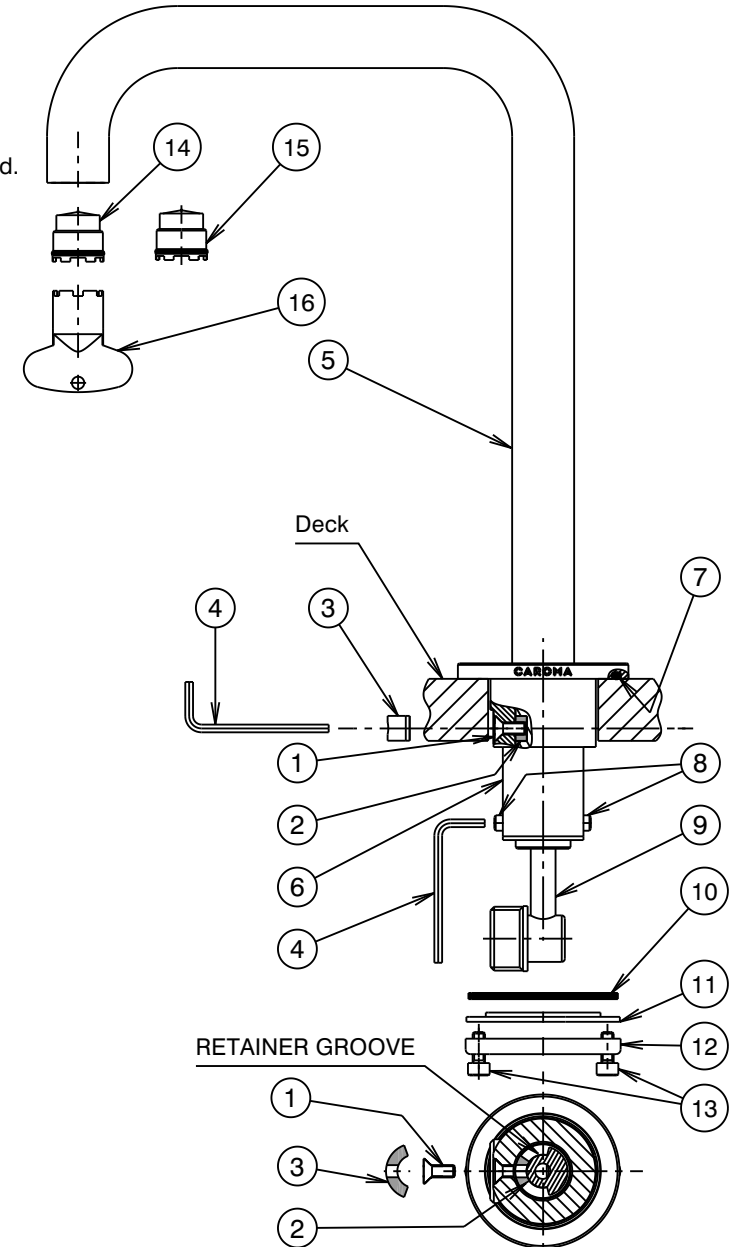


Fig. 1