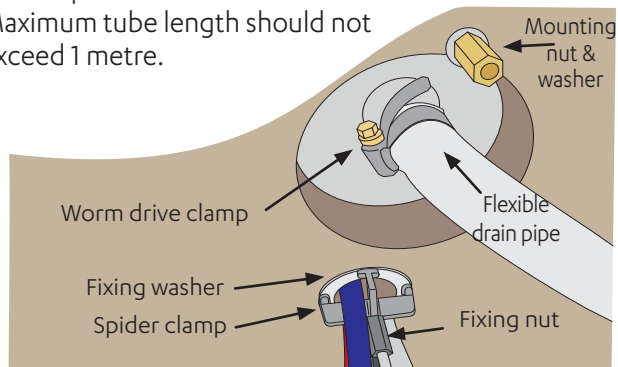


5 Secure Font & Tap, attach drain (underneath)

- Secure Font with mounting nut and washer.
- Secure Tap with spider clamp, fixing nut and washer.
- Secure flexible drain pipe with a worm drive clamp. Ensure braided clear reinforced tubing is used.
- If required, use the elbow fitting (supplied) under the Font to prevent hose kinks.
- Maximum tube length should not exceed 1 metre.

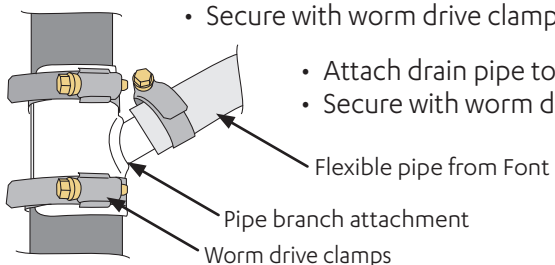
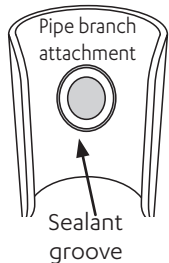


6 Prepare the drainage point



Position upstream of a drain trap.
Drain pipe must have constant fall.
Ensure there are no kinks or sags.

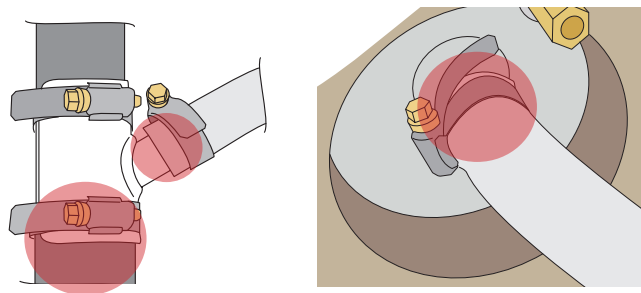
- Locate pipe branch attachment temporarily in position on vertical pipe, upstream from a drain trap.
- Mark spigot hole position, remove attachment & drill out 13mm diameter.
- Apply sealant to spigot groove.
- Ensuring spigot is pointing upwards, snap attachment into place over hole.
- Ensure excess silicone is cleared at drain entry before final hose connection.
- Secure with worm drive clamps.



- Attach drain pipe to spigot.
- Secure with worm drive clamp.

7 Test for leaks

Test for leaks here, re-seal if required.



8 Cleaning and general maintenance

Wipe surfaces with a damp cloth and then wipe dry with a clean, dry cloth. Do not use disinfectant sprays without wiping dry afterwards.

Note: If you are experiencing drain-away issues after correct installation, you can consider installing an AAV (Air Admittance Valve) in accordance with your local plumbing code.



Zip Water (Aust) Pty Ltd
ABN 46 000 578 727

67 - 77 Allingham Street, Condell Park, NSW 2200
Postal: Locked Bag 80, Bankstown 1885, Australia
(+612) 9796 3100 | Free Call (Aust): 1800 947 827

www.zipwater.com

Zip Water UK

Trafalgar House
Rash's Green, Dereham,
Norfolk NR19 1JG

0345 6 005 005 | sales@zipindustries.co.uk

specify.zipwater.co.uk

Installation instructions

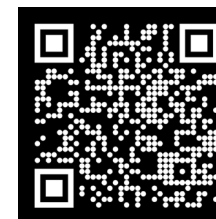
Zip HydroTap Raised Font



For Classic, Classic Plus, Elite, Elite Plus, Miniboil,
Touch-Free Wave Taps



Australia



UK

Visit our website to download the manuals

Using these instructions

Please refer to all safety and installation requirements detailed in the installation instructions for the HydroTap Command Centre (supplied with the product and online), prior to installation of, or any change to, the complete system.



WARNING



Read the instructions

Before commencing the installation, download & read the HydroTap installation instructions

Tools needed for Font installation (not supplied)

In addition to normal tools, the following (or equivalent equipment) will be required.

- 35mm diameter hole saw for Tap mounting hole.
- 86mm diameter hole saw for Font mounting hole.
- 13mm diameter drill for drainage point.
- 10mm drill for Font mounting stud clearance holes.
- Tube spanner (6mm) (supplied).



Be aware of the risks of hazards which could cause harm when using tools. Assess the risks before starting the installation.

Parts supplied in the kit

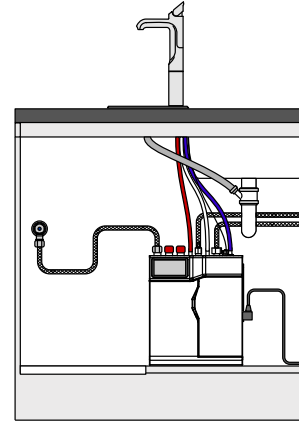
Qty	Description
1	Font body, detachable Font grille & extension piece
1	Mounting stud, nut and washer
1	Extension stud & link nut
1	Pipe branch attachment
2	Worm drive clamps for pipe branch attachment
2	Worm drive clamps for flexible drain hose
1	Benchtop cutting template (part no. 809249)
1	Tube spanner
1	Elbow fitting for drain inc. 2 worm drive clamps
1	Drain hose tube PVC 19mm ID

1 Positioning



Ensure that Font is positioned to minimise the risks of scalding by dispensing boiling water while using the Tap.

- Position Tap and Font using the template provided. See **2**.
- Position Command Centre and Tap as close together as possible.



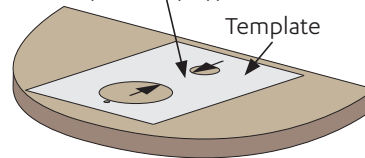
2 Mark out the Font and Tap positions



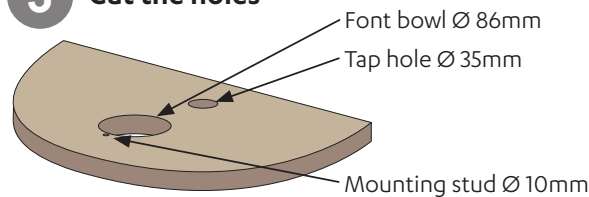
Refer to the installation instructions supplied with the HydroTap.

- Place the transparent film template (supplied) in position on the work surface.
- Mark out the hole positions and centres.

Check spacing dimension for required Tap type



3 Cut the holes



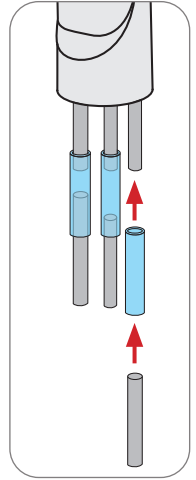
4 Mount the font

- Remove the spider clamp, fixing nut, fixing washer and black plastic spacer from the Tap assembly. Use the tube spanner supplied.



Refer to the installation instructions supplied with the HydroTap for identification

- If required, extend the water tubes from the Tap using silicone and metal tubes, as shown.
- Connect the extension stud to the Tap with the link nut.
- Clip the black plastic spacer onto the bottom of the Tap extension.
- Screw the Font mounting stud into the Font body.
- Apply a light coat of silicone sealant to the base rim of the Font.



- Feed the Tap pipes, stud, and cable through the extension, Font & Tap holes, and press Tap & Font firmly into position.
- Align Tap spout centrally on the Font.

