



# PHOENIX

## SPECIFICATIONS

**TOI**

### FLOOR MOUNTED BATH MIXER

PRODUCT CODE: 108-7450-60  
 FINISH: CHROME / MATTE BLACK  
 WELS: N/A

#### INFORMATION:

TEMPERATURE RATING: MIN 1° - MAX 75°  
 PRESSURE RATING: MIN 150 kPa - MAX 500 kPa

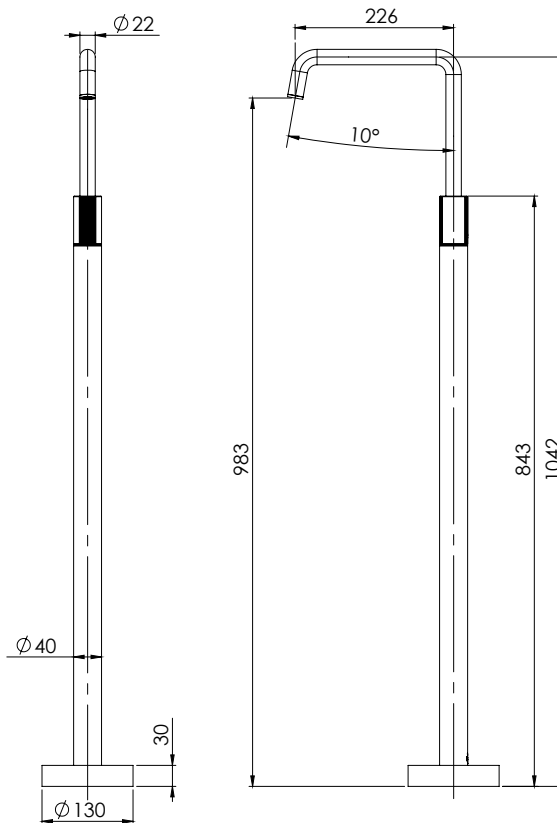


AVAILABLE IN:



CHROME / MATTE BLACK  
 MATTE BLACK / BRUSHED ROSE GOLD

FOR MORE INFORMATION VISIT  
[www.phoenixtapware.com.au](http://www.phoenixtapware.com.au)



PLEASE [CLICK HERE](#) TO VIEW FULL WARRANTY

While we aim to ensure the specifications shown are correct at time of printing, Phoenix Tapware reserves the right to make modifications without prior notice. Always use the physical product measurements for mark-ups and roughing-in as the line drawing shown may differ from the actual product over time. All measurements are shown in millimetres.

A Registered Design and Trademark of Phoenix Industries Pty. Ltd  
 V210918

[www.phoenixtapware.com.au](http://www.phoenixtapware.com.au)  
 03 9780 4200



# PHOENIX

## SPECIFICATIONS

**TOI**

### FLOOR MOUNTED BATH MIXER

PRODUCT CODE:

108-7450-60

FINISH:

CHROME / MATTE BLACK

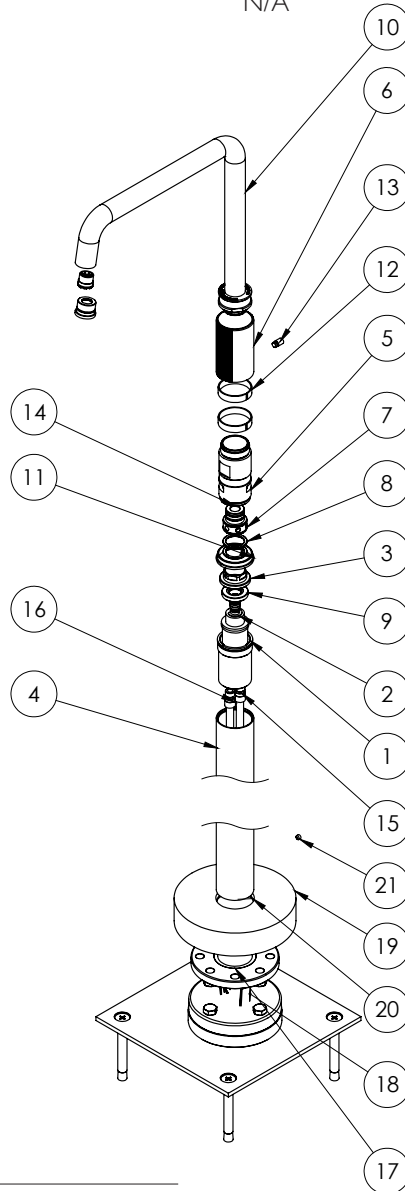
WELS:

N/A



#### PARTS LIST

1. CARTRIDGE SEAT
2. CARTRIDGE
3. LOCKNUT
4. MIXER TUBE
5. INNER BODY
6. HANDLE
7. SPLINED SPIGOT
8. WASHER ADAPTOR
9. RETAINER ADAPTOR
10. SPOUT
11. HANDLE PLASTIC RING
12. SWIVEL COLLAR
13. PIN
14. O-RING 16X2.0
15. COOPER EXTENSION HOT
16. COOPER EXTENSION COLD
17. MOUNTING PLATE
18. RETAINER CLIP
19. COVER PLATE
20. O-RING 39X3
21. GRUB SCREW PLAIN M5X4



#### MAINTENANCE AND CARE:

- All surfaces should be cleaned with mild liquid detergent or soap and water.
- Do not use cream cleaners or citrus based cleaning products, as they are abrasive.
- Use of unsuitable cleaning agents may damage the surface. Any damage caused in this way will not be covered by warranty.

#### PACKAGING INCLUDES

- 1 x Floor mounted bath mixer
- 1 x Mounting plate
- 1 x Installation kit
- 1 x Installation instructions
- 1 x Warranty card

PLEASE [CLICK HERE](#) TO VIEW FULL WARRANTY

While we aim to ensure the specifications shown are correct at time of printing, Phoenix Tapware reserves the right to make modifications without prior notice. Always use the physical product measurements for mark-ups and roughing-in as the line drawing shown may differ from the actual product over time. All measurements are shown in millimetres.

A Registered Design and Trademark of Phoenix Industries Pty. Ltd  
V210918

[www.phoenixtapware.com.au](http://www.phoenixtapware.com.au)  
03 9780 4200