



**Dual Flush Toilet Conversion Kit**

## **INSTALLATION INSTRUCTIONS**

# Table of Contents

Smarter Flush Conversion Kit Tip Sheet .....3

Overflow Water Conserver.....4

Satisfaction Guarantee .....5

Parts List/Parts Breakdown .....6

Removing Existing Tank Valves.....7

Fill Valve Installation .....8

Flush Valve Installation .....9-10

Flush Handle Instructions.....10

Setting the Tank's Water Level .....11

Adjusting Half and Full Flush Volumes .....12

Warranty.....12



# Smarter Flush Conversion Kit Tip Sheet

## Water Level

- #1** In order to assure proper functioning of the dual flush system the water level in the tank must be above the flush valve body and 1" below the top of the overflow pipe.

## Black Donut Gasket

- #2** Do not throw away your old tank to bowl donut gasket. It may be the best fit for your toilet. You can chose either your existing gasket or the new supplied gasket for the best fit between your tank and bowl.

## Short Flush Adjustment

- #3** Adjust the blue float on the side of the dual flush unit all the way to the top. This will use the least amount of water for the half flush. If this is not enough water to clear the bowl then start adjusting down one click at a time until you are satisfied.

## Full Flush Adjustment

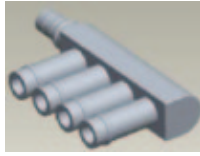
- #4** Adjust the red float on the side of the dual flush unit all the way to the top. This will use the least amount of water for the full flush. If this is not enough water to clear the bowl then start adjusting down one click at a time until you are satisfied.

## Handle Connection

- #5** When connecting the handle to the switch box with the yellow cable make sure that you do not kink the yellow cable. It needs to be a sweeping curve back to the handle.

**Call customer service at 248-434-8609 with any questions.**

# Conserve Water with an Overflow Water Converter



## INSTALLATION INSTRUCTIONS

By using a toilet tank Overflow Water Converter, you can divert the majority of water that would normally flow down the toilet's overflow tube, back into the toilet tank.

This allows the toilet tank to fill faster.

The Overflow Water Converter saves water with each flush, depending on the number of nozzles sticking out over the overflow tube.

You save water because the quicker the toilet tank fills the sooner it will shut off. The problem with most traditional toilets is that the bowl fills faster than the toilet tank. This wastes water unnecessarily in order to fill the bowl that could be better used for filling the tank. The Overflow Water Converter fixes that problem.

The Overflow Water Converter is installed at the end of the refill hose and then it is inserted on the top of the overflow tube. (see picture below).

The Overflow Water Converter does not restrict the flow of water and will not affect the flush power of the toilet.

Easy-to-install ...no tools needed.



## INSTALLATION INSTRUCTIONS

1. Make sure that water is not running in the toilet at the time of installation.
2. Turn water control valve that comes out of the wall to the maximum open position.
3. Make sure water level is 1" from the top of the overflow tube, adjust fill valve as needed.
4. Pull the refill hose so it does not kink when attached to the Overflow Water Converter.
5. Insert the Overflow Water Converter into the refill hose end (apply a small amount of vegetable oil or soap so that the hose end fits over the last ring securing a tight fit to the nozzle).
6. Insert the Overflow Water Converter onto the overflow tube as pictured above.
7. On the Smarter Flush system lock the Overflow Water Converter by turning into the ridges on the overflow tube.

# Smarter Flush Conversion Kit

## INSTALLATION INSTRUCTIONS

### **VERY IMPORTANT:**

**Read the instructions before your installation.**

## **UNCONDITIONAL 30 DAY PERSONAL SATISFACTION GUARANTEE**

If for any reason your Smarter Flush is not satisfactory, return it to us (PREPAID) within 30 days of purchase, along with a copy of your receipt, and we will refund the purchase price to you.

Our refund guarantee does not cover the cost of any of the shipping and handling charges that may have been incurred.

Smarter Flush is not responsible for damage caused by failure to follow the Installation Instructions that came with the kit.

This kit has been designed for most standard two piece toilets. It is not designed for one-piece toilets, low profile toilets or vacuum assist toilets. Before installation check to see if the toilet tank has been manufactured with a 2" or 3" discharge hole. Smarter Flush does offer two different retrofit kits to fit a 2" or a 3" discharge hole. Make sure that you have the correct retrofit kit to fit the size of the discharge hole in your toilet tank.

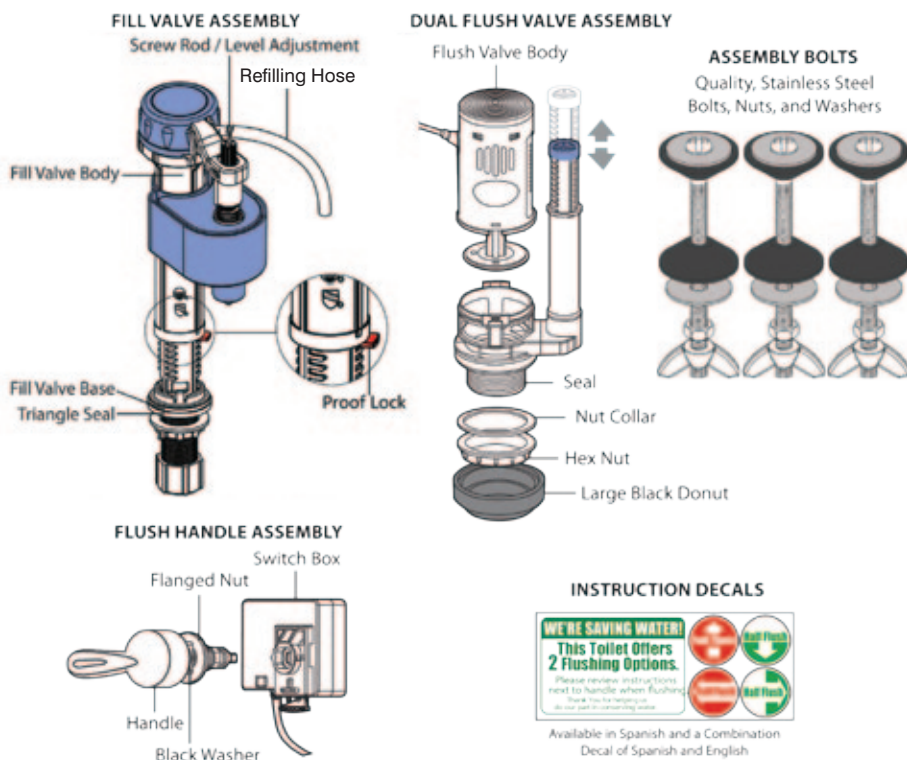
Empty the water from the tank and lift up the flapper. Check the hole under the flapper to ensure that it is the same diameter as the bottom hole on the new dual flush valve. If it is not the same size the retrofit kit cannot be used to upgrade the toilet. If you have already purchased the retrofit kit please return it for replacement with the correct size or a full refund. Your kit has been designed with replacement parts for all of the parts of the most popular brands of two piece toilets. However, it may be necessary to reuse certain parts which were specifically designed for your particular toilet. During disassembly, set aside all parts from your original toilet tank and do not discard. When and if necessary, use the original part(s) to complete the installation.

## **Smarter Flush Certifications:**



# Parts List/Parts Breakdown

## INSTALLATION INSTRUCTIONS



### Tools Needed:

- Various wrenches may be required for disassembly as variations occur from tank to tank
- Channel lock pliers / Crescent Wrench / Fixed Wrench
- Large Screwdrivers; Flat Head and Phillips Head, Pencil
- Rag or sponge to wipe away residual water
- Low profile bowl or bucket to catch any water spillage

### Check to ensure that your kit includes the following components:

- |                         |                                    |
|-------------------------|------------------------------------|
| - Fill Valve assembly   | - Dual Flush Valve assembly        |
| - 3 Assembly Bolts      | - Large Black Donut (tank to bowl) |
| - Flush Handle assembly | - Instruction Decals               |

If any parts are missing, call Customer Service at the number shown in the Contact section of the company website, [www.smallerflush.com](http://www.smallerflush.com).

## INSTALLATION INSTRUCTIONS

1. Remove the lid from the tank and set aside. Mark the existing water level on the inside of the toilet tank with a pencil.
2. Turn off the Water Inlet Shut-Off Valve that supplies water to the toilet tank. (See Illustration A).

### CAUTION:

If your Water Inlet Shut-Off Valve has not been turned on or off recently, check and be sure that the Valve has not become frozen or that the seal has not become dried out. A frozen or dried out Valve may leak if disturbed. The Water Inlet Shut-Off Valve should turn freely and be leak free.

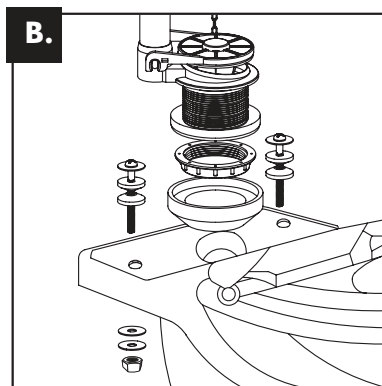
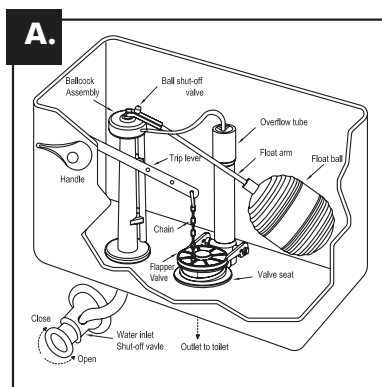
### DO NOT USE FORCE TO TURN THE VALVE.

Forcing the Valve to turn could break the Valve and cause serious water damage. If the Valve does not turn freely, or if the valve leaks, seek expert help. Replacement of the valve may be necessary.

3. Drain the tank by flushing the toilet and emptying the remaining water from the tank using a towel or sponge.
4. Disconnect the tank water supply hose from fill valve located on the underside of the tank.
5. Disconnect the flapper chain. Remove the flush handle by unscrewing the nut inside the tank which fastens the handle to the tank.
6. Remove the nuts on the underside of the tank from the bolts which fasten the tank to the bowl (See Illustration B).
7. Lift tank off the base then set on a secure surface.
8. Remove the large rubber donut, plastic nut, and washer from the flush valve located on the underside of the tank.
9. Remove the flush valve body from the inside of the tank.
10. Remove the fill valve by unscrewing the nut on the underside of the tank.
11. Ensure the area around the tank and the bowl openings is clean and free from residue.
12. Remove the bolts from the tank.

**Observe disassembly sequence. This will facilitate re-assembly.**

**Your original donut gasket may be the best fit so do not discard.**

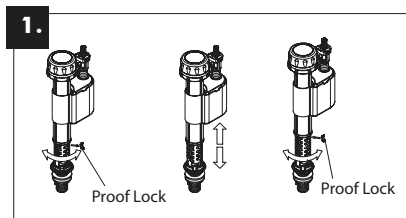
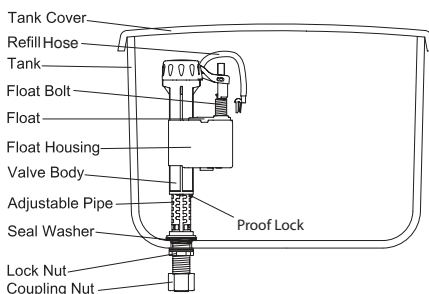


## INSTALLATION INSTRUCTIONS

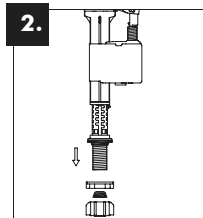
**WARNING:** We shall not be responsible or liable for any failure of, or damage to, this plumbing product caused by use of chlorine (bleach) cleansers or related products added to the tank water. Use of such products will void the warranty and may result in product failure, possibly causing property damage. Do not overtighten plastic nuts.

### IMPORTANT:

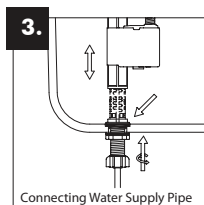
**DO NOT** use plumber's putty to seal this fitting.



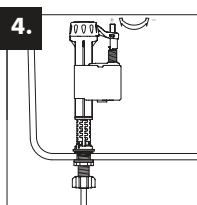
1. Unload the Proof Lock as indicated above. Unscrew the Adjustment Body clockwise and lift up or down to an appropriate height, then screw the Body counterclockwise until you hear "click," and replace the Proof Lock. (See Illustration 1)



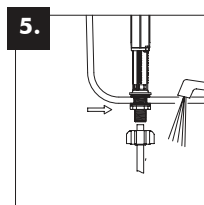
2. Disassemble the Lock Nut and Coupling Nut for valve installation. (See Illustration 2)



3. Position VALVE inside tank. Push down on the Valve Shank (not the TOP) while tightening Lock Nut. (See Illustration 3)



4. Adjust water level by screwing Float bolt and move the Float Housing up or down along the Valve Body to join with the Float. Pay attention, the Float Housing should be attached to the Float and the Arm shouldn't be raised. (See Illustration 4)



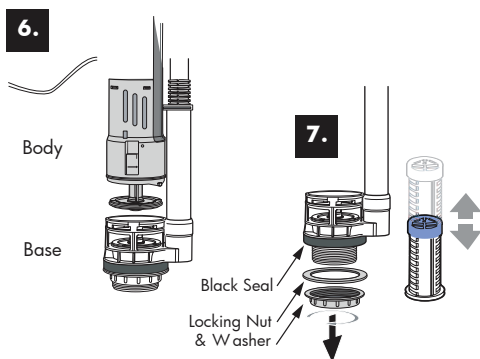
5. Do not overtighten Lock Nut. (See Illustration 5)

**NOTE:** Subject to the product if any difference.

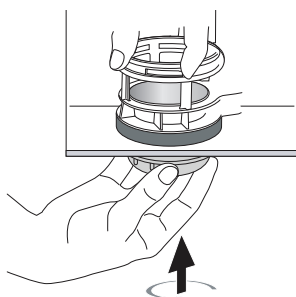


## INSTALLATION INSTRUCTIONS

6. Remove white locking nut and black plastic washer from Flush Valve Base (See Illustrations 6, and 7). Do not remove the black seal. Hold the lower portion of the Flush Valve Base firmly and rotate the Flush Valve Body clockwise to separate the body from the base.
7. Unlock the Locking Ring by firmly pushing it down (See Illustration 7).

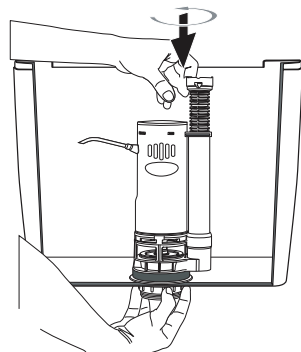


8.



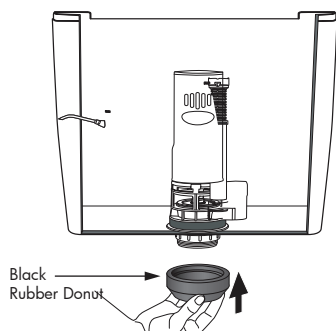
8. Insert Flush Valve Base with the black seal into the tank's discharge hole (See Illustration 8). Fasten the Flush Valve Base to the underside of the tank with the white locking nut and black washer. Do not overtighten.

9.



9. Position the Flush Valve Body on the Flush Valve Base and lock it in place by rotating it to the left or right (See Illustration 9). Note that the flush valve can be rotated 360 degrees to the most favorable position.

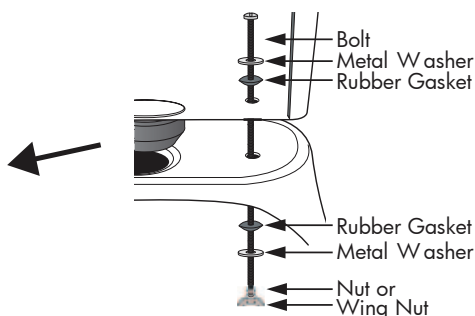
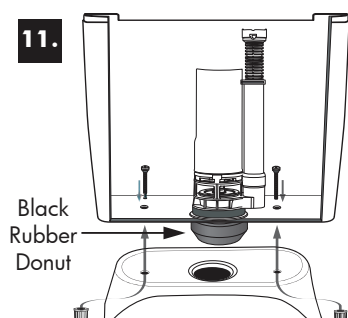
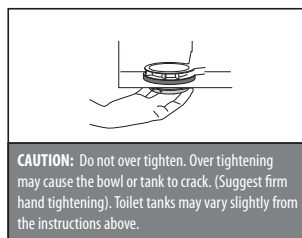
10.



10. Position the Black Rubber Donut over the locking nut. Gently insert the tank in place (See Illustration 10).

## INSTALLATION INSTRUCTIONS

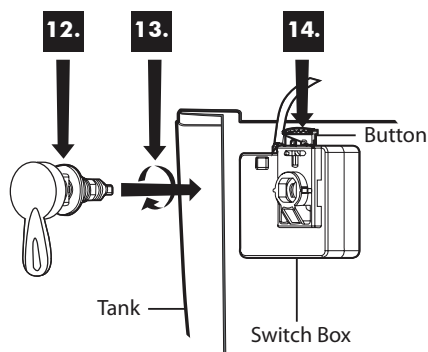
11. Align the tank and bowl bolt holes (See Illustration 11). Make sure the rubber cone-like washers are snug against the heads of the bolts and snug in the hole. Screw the bolts through the inside of the tank, metal washers, hex nuts, and finally the holes in the toilet base. Slide metal washers onto the end of the bolts then fasten tank with wing nuts. Do not over tighten but make sure the tank will not rock.



# Flush Handle Instructions

# PART 4

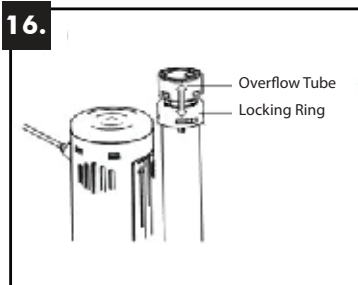
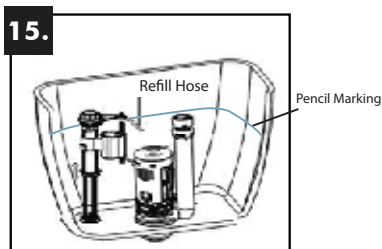
## INSTALLATION INSTRUCTIONS



12. Unscrew the white flanged nut counterclockwise then set aside (See Illustration 12). Ensure the black seal is seated on the spindle.
13. Insert the Flush Handle into the tank and position according to toilet tank type and personal preference (See Illustration 13). Screw the flanged nut onto the spindle then tighten.
14. Push down the Switch Box button and hold (See Illustration 14). Insert the end of the spindle into the Switch Box. Make sure the Flush Handle can be turned approximately 90 degrees in either direction. It may be necessary to remove the black seal depending on the model of the tank. **MAKE SURE THE YELLOW CABLE DOES NOT HAVE A KINK. IT NEEDS TO BE A FREE SWEEPING CURVE.**

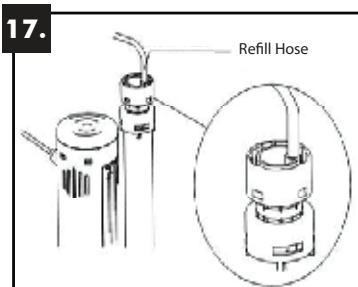
## INSTALLATION INSTRUCTIONS

15. Attach the White Refill Hose to the nipple on the Fill Valve Body until the top of the blue float is at the same height as the pencil marked water level (See Illustration 15).



16. Raise or lower the Overflow Tube so that the top is about 1" above the marked water level (See Illustration 16). In order to adjust the Overflow Tube turn the top of the Tube to the right, set the water level position, once set, turn to the left to lock position in.

**NOTE:** The Overflow Tube may not appear to raise. Continue to manipulate the Overflow Tube until it twists and rises freely.

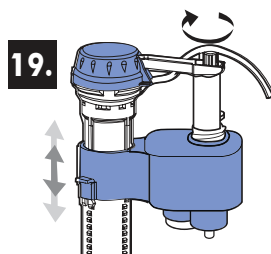
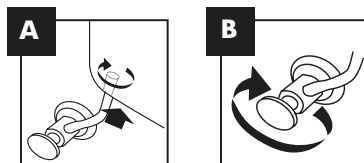


17. There are two options for attaching the white Refill Hose to the Overflow Tube. Use the Overflow Water Conservator (See page 4) included in the package OR insert the white Refill Hose into the circular opening on the blue cap on the Overflow Tube (See Illustration 17).



18.

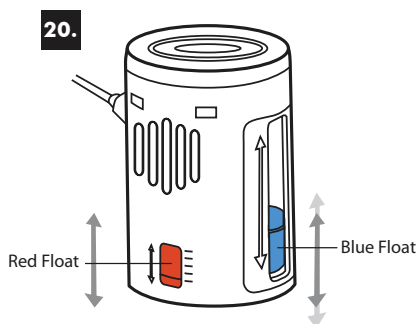
18. Connect the water supply hose to the underside of the tank then open the Water inlet Shut-Off Valve (See Illustration 18 A and B).
19. Adjust the water level by turning the white screw on top of the blue float (See Illustration 19). Rotate the white screw clockwise to increase the water level or turn it counterclockwise to decrease. Turn the white screw so that the top of the float is even with the water level according to the pencil mark. The water level should be set 1" below the top of the Overflow Tube and just over the top of the flush valve body.



## INSTALLATION INSTRUCTIONS

20. Adjust the half flush volume by moving the Blue Float to the top and perform a half flush while observing the adequacy of water flow (See Illustration 20). If not enough water is available for a good flush, lower the Blue Float one click, flushing each time, until enough water is flushed to clear the bowl. This can be best observed by throwing a piece of toilet tissue in the bowl each time you flush. When the correct setting is reached, the bowl clears properly.

Adjust the Full Flush volume by raising the Red Float to the top (see Illustration 20) and perform a full flush as stated in the previous step. Raising the Red Float releases less water to flush and the flush time is shorter. Replace the toilet lid.



**Note: Take time to experiment with the settings and obtain optimum water savings!**

## WARRANTY

This product Warranty extends to the original consumer/purchaser of the product. We guarantee it to be free from defect in the materials used, and the workmanship for a normal installation, reasonable use and common service for a PERIOD OF FIVE YEARS from the date of purchase as shown on the consumer/purchaser's receipt.

The Warranty obligation is limited to the repair or replacement of the product (at our option) within the Warranty period. To obtain service under this Warranty, the product must be returned to the address in the Contact section of the company website [www.smarterflush.com](http://www.smarterflush.com), accompanied by a copy of the purchaser's receipt. The Warranty does not apply to any costs associated with a) shipping and handling, b) any costs associated with installation, removal, reinstallation or c) labor or expenses other than mentioned above.

**UNCONDITIONAL 30 DAY GUARANTEE.**

This Warranty is in lieu of all other expressed warranties, obligations, or liabilities. IN NO EVENT SHALL THE MANUFACTURER, DISTRIBUTOR, OR INSTALLER BE LIABLE FOR ANY SPECIAL, INCIDENTAL OR CONSEQUENTIAL DAMAGES FOR BREACH OF THIS OR ANY OTHER WARRANTY, EXPRESSED OR IMPLIED.

Some states do not allow the **exclusion or limitation of incidental or consequential damages, so this exclusion or limitation may not apply to you.** This Warranty gives you specific legal rights, and you may also have other rights which may vary from state to state.