



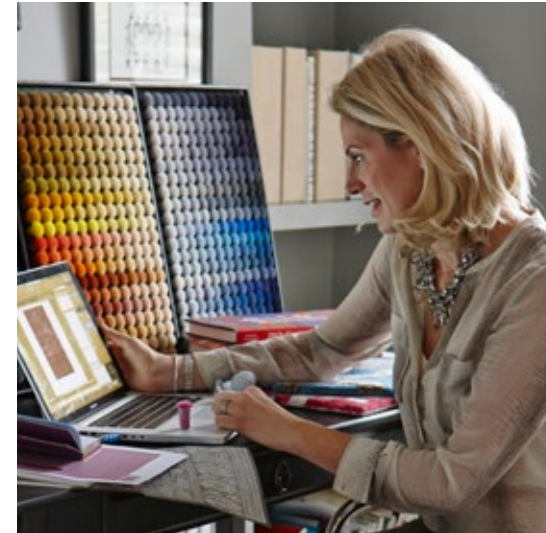
JENNIFER
MANNERS

LUXURY HANDMADE RUGS



THE PROVENCE COLLECTION


JENNIFER
MANNERS
LUXURY HANDMADE RUGS



Jennifer Manners Design has worked collaboratively and creatively with some of the most celebrated design professionals around the world providing luxury rugs for both residential and commercial projects.

With a commitment to the handmade heritage and a uniquely sustainable approach, Jennifer Manners has become synonymous with classic elegance, sustainable luxury and timeless design.

With an instinctual approach to observation and interpretation, many of the designs are derived from cultures and destinations across the globe. The patterns are often elegant, textured and interesting abiding to the philosophy that a rug is a layer in a room that must sit in balance with other elements.

With showrooms in both London and New York, Jennifer Manners Design continues to push the boundaries of weaving, materials and innovative design and we are dedicated to delivering sustainable options to luxury interiors.

PROVENCE

This iconic southern French region is reminiscent of long summer lunches sipping rosé surrounded by lavender fields while gazing at a cerulean sea. This same casual, elegant way of relaxed living was the inspiration behind our Provence Collection.

Crafted using our */re/PURPOSE PERFORMANCE* fibres, this special collection promotes a focus on buying well and buying less. These fibres are inherently hard-wearing, stain-resistant and even bleach-cleanable.

This collection has been given commercial-grade accreditation, paving the way for sustainable design in domestic and commercial hospitality spaces.

The Antibes, Cassis, Marseille and Mougins designs within this collection are designed to resemble natural jute with a vibrant contrasting thread - which can be customised using any colour to perfectly suit your scheme.





MOUGINS

This small jewel on the Côte d'Azur is nestled quietly in the undulating hills above Cannes. A creative hotbed in the 20th century, artists like Francis Picabia, Jean Cocteau and, most famously Pablo Picasso, all gravitated here in celebration of its evocative light.

Mougins boasts an unrestrained, intricate weave where colour and neutrally toned fibres play alongside each other to form an interesting yet subtle effect. Crafted to look like natural jute, any colour can be used as an accent, further celebrated in the whimsical fringe along its edges.





ANTIBES

This beach-side village of Antibes is known for being the 'hidden gem of the Riviera' due to its more relaxing vibe without the pretentiousness of some of its seaside neighbours.

Our rug by the same name is equally unpretentious, noted for its pop of colour in equal proportion to the natural sisal-like warmth, inspiring a similar cool, chic vibe found in this iconic French destination.





MARSEILLES

Originally founded in 600 BC as a Greek colony, the now French city of Marseilles has become the gateway to Africa and the East. This crossroad of civilisations gives this stunning coastal gem its unique, colourful culture and the ideal source of inspiration behind our rug of the same name.

Earthy-toned sisal-looking fibres boast a subtle checkerboard pattern that appear as small vertical stripes the length of the rug in an array of colours. Finishing off the edges in a pop of colour fringes, this relaxed rug gives an elegant, soulful aesthetic that can be as casual or as formal as the space intends.



CASSIS

This coastal French village hidden in a small, rocky inlet along the Mediterranean Sea was the inspiration behind our subtle yet elegant rug of the same name. Quiet yet captivating with its dramatic cliffs, this village is one of the most picturesque hamlets along the coast.

Our rug features warm sisal-looking fibres with small dashes of colour in vertical stripe formations to give a more formal structure to the design. Made using our moisture-resistant /re/PURPOSE PERFORMANCE fibres, this rug is made for indoor or outdoor living. Any colour can be employed and used also in the tape edges of this timeless, elegant rug.



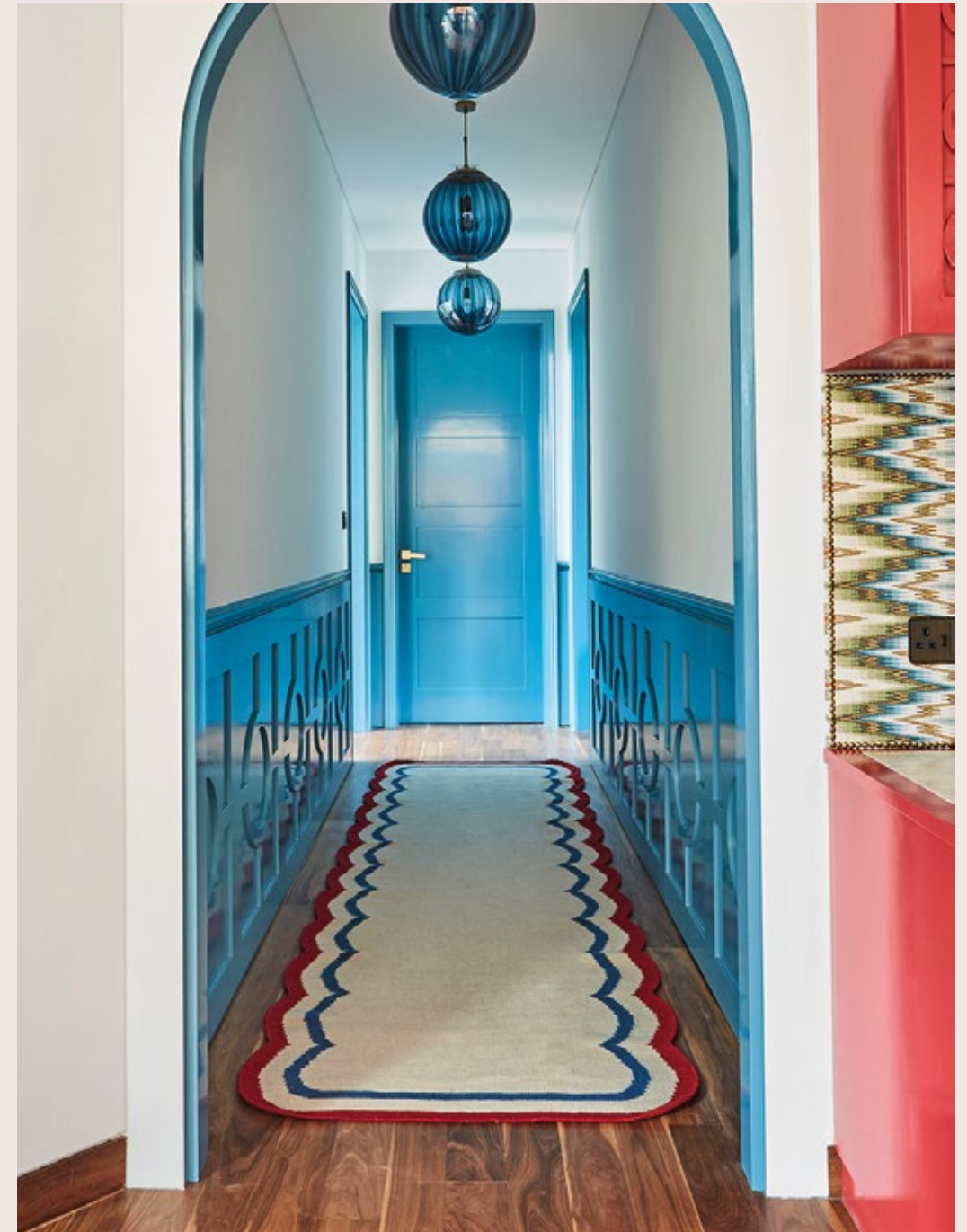
SCALLOP

We have joined forces with celebrated interior design studio Salvesen Graham to design a flatwoven rug with curve appeal. The very first of its kind, our copyrighted Scallop takes a classic double-border format and adds a little flourish: the crescent detail. The result is a sophisticated piece with a playful edge.

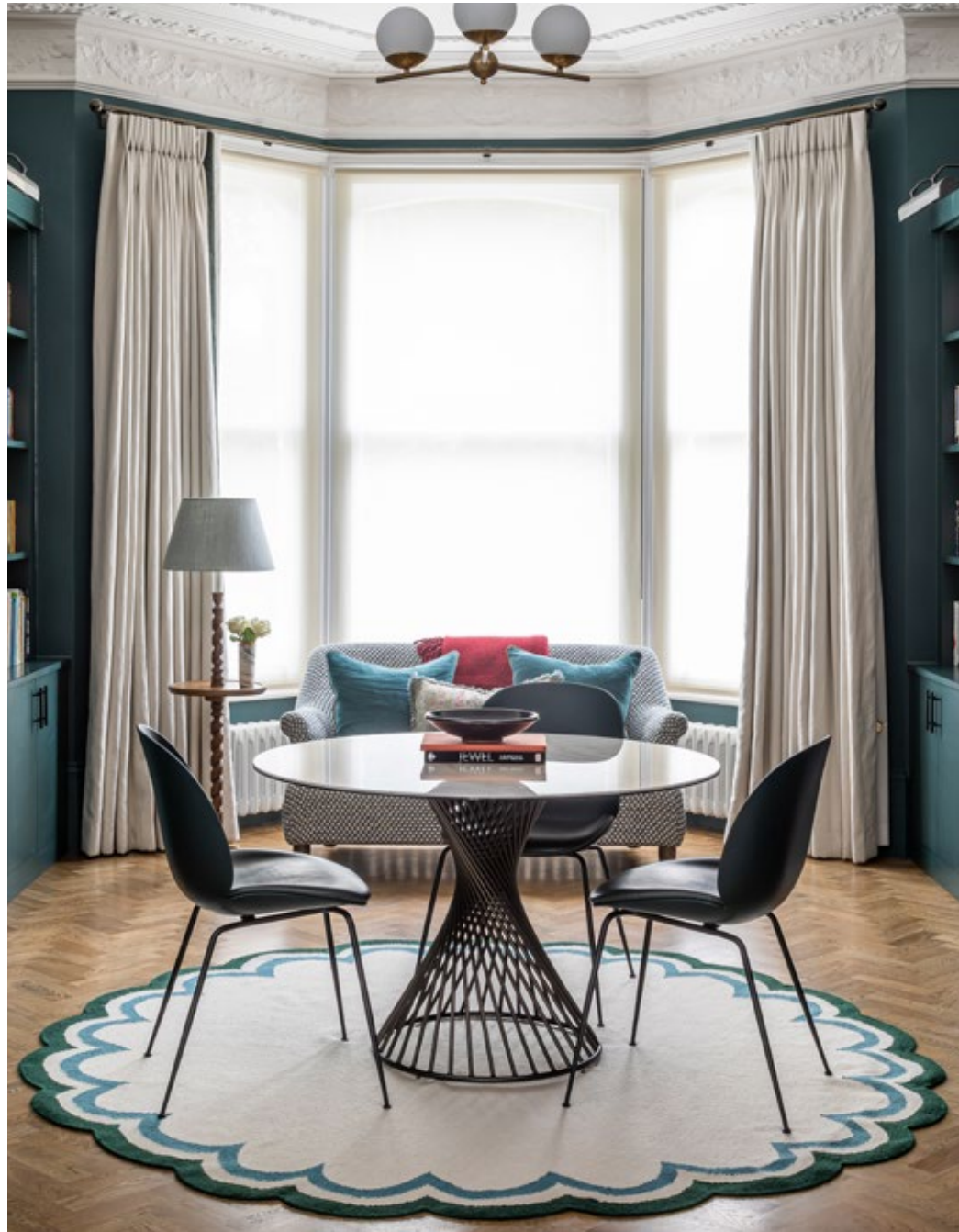
Flatwoven New Zealand wool; also available in /re/PURPOSE PERFORMANCE fibres. Any size, shape and colour is available.



SCALLOP
Cerise



SCALLOP RUNNER
Custom Colour



SCALLOP
Custom Shape and Colour



SCALLOP
Denim



SCALLOP
Mini-mat in Sky



SCALLOP
Ocean

HAMPTONS

Our Hamptons Collection is composed exclusively of textural flatweave rugs that have been inspired by the timeless, crisp East Coast aesthetic. While the designs nod to the nautical, they are defined by their linear, often repetitive, motifs in a range of fresh and versatile colourways.

Every piece is individually handmade-to-order and can be customised to suit your scheme.

FLAGS

The clean-lined geometry of the international code of signalling flags for boating was the source of inspiration for our Flags rug.

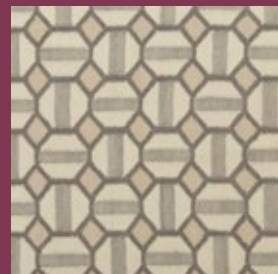
This small-scale motif complements a range of interior schemes and has been created in a selection of soft tones for an elegant, coastal effect.



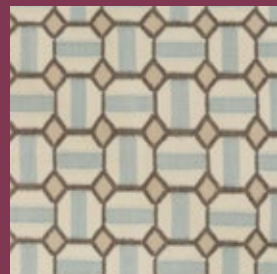
CORAL



NANTUCKET



SAND



SKY

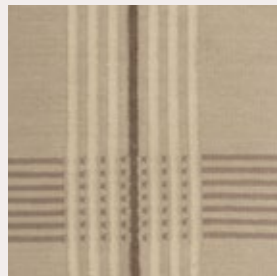




KELLY



NAVY



SAND



NANTUCKET



PLAID

The archetypal fabric of the East Coast country club has been given a modern edge in fresh and versatile colours. The mood is one of laid-back elegance while smart enough to hold its own in any formal space.



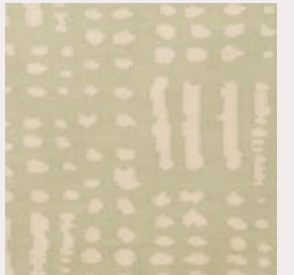
PARCHMENT

PEBBLE

Reminiscent of beachside strolls at low tide, our Pebble rug is inspired by small stones forming gradually over time as the ocean washes over loose rocks. Our version arranges smooth-edge shapes into a repetitive motif with an organic sense of order and serenity that embraces a casual yet elegant mood, typical of east coast living.



SAND



CELADON



ELEPHANT



NAVY



NANTUCKET



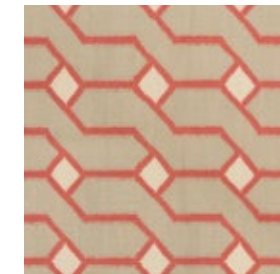
SAND



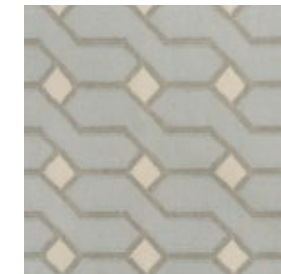
CELADON

SAILING STRIPES

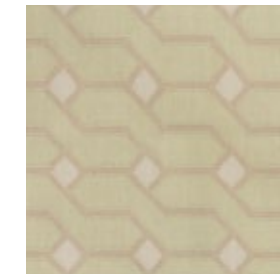
A deconstructed ticking stripe rendered in rich, earthy tones lends this design a distinctly modernist quality. The unique arrangement of modular pattern, which is both playful and well-balanced, suits both laid-back and more formal settings.



NANTUCKET



STEEL



CELADON

ROPE

Sailing in the Hamptons is an age-old past time that requires technical expertise while exuding elegance. Our Rope rug was inspired by these same principles. Boasting an interweaving pattern that appears as a twisted vertical rope, rendered in coastal colours it is both classic and modern.

ICONS

Travel is a great luxury of our generation, allowing for the discovery of patterns, colours and ideas from around the globe. Our collections take inspiration from a mix of cultures and eras, all working to inject a sense of interest into the everyday.

Here, we feature some of our most iconic and beloved flatwoven rugs from our collection. No matter the trend, these elegant pieces stand the test of time and never lose their appeal.

Made in a variety of colour and pattern, the one thing they all have in common is exquisite craftsmanship that endures through generations.

KEYHOLE

Harking back to traditional Scandinavian goose eye motifs, the miniature scale and repetitive pattern of this design keeps the focus on texture. The result is a versatile layer suitable for placement on carpet or hardwood floors.

Crafted as a flatwoven 4-paddle rug in New Zealand wool; also available in /re/PURPOSE PERFORMANCE fibres.



FEZ

The use of geometry to form repeating patterns and corresponding shapes is a classic characteristic of the Moorish expression and nowhere more beautifully arranged than in the exotic, ancient city of Fez. Steeped in timeworn splendour, Morocco's imperial city was the source of inspiration behind our rug.

Diamonds formed with zagged lines create interest in this elegant pattern that works equally well in contemporary and traditional settings.



SANTA BARBARA

Dubbed the 'American Riviera', this pristine Californian artists' haven epitomises casual yet sleek living with a look that is at once warm and inviting.

Inspired by this charming city, the clean lines of our Santa Barbara rug are arranged in a calm, crisp grid pattern and given a contrasting border for a more traditional feel. Made using our moisture-resistant /re/PURPOSE PERFORMANCE fibres, this rug is ideal for indoor or outdoor living.



CHEVRON

While often thought of as a classic mid-century pattern, the distinctive chevron is found in ancient palaces and forts in India dating back centuries. Ours is scaled to perfection, lending a modern edge to even the most traditional interior schemes.

HOLLYWOOD

Inject classic Hollywood glamour into your home with our Art Deco inspired design by the same name. A muted colour palette adds to the chic elegance, staying true to 1920s style, while the bold geometric shapes retain a contemporary edge.

Project designed by British interior designer Jenny Luck.



EASTERN STARS

The 8-pointed star is thought to be a symbol of balance and harmony in Eastern religions, reminding us that all things are connected and that we must strive for balance.

A great source of inspiration for both life and design - we used a repetitive, symmetrical octagram as inspiration for our Eastern Stars rug.



HEX

Hexagons are thought to be sacred symbols, studied in ancient geometry and celebrated as expressing the potential for life. Mathematically, they are thought to be a 'perfect' form where very little waste is created when the shape is lined together.

In our Hex rug we use a repetitive honeycomb pattern inside more hexagons and laid them in a grid formation, celebrating its sacred element and an impressive modern design aesthetic.





MOSS



MIDNIGHT



RASPBERRY



SHERBET



MUSTARD

CHECK

Our second collaboration with celebrated interior design studio Salvesen Graham celebrates a modern take on a classic pattern, the CHECK.

Thought to have made its first appearance during biblical times, the floor of King Solomon's Temple has been depicted with a checkered pattern. The regular sized squares in tonal hues now represent an injection of colour that is classic and calm.



BARBADOS

Dyed to look like natural jute or sisal grasses found through the paradise island of Barbados, our braided /re/PURPOSE PERFORMANCE fibres mimic the casual look of natural fibre rugs while providing inherent stain protection.

Handmade using our /re/PURPOSE PERFORMANCE fibres crafted from 100% recycled water bottles, these performance threads are moisture-resistant, moth-resistant and easy to clean.

Available as an area rug or as wall-to-wall carpet.

/re/PURPOSE PERFORMANCE

Our award-winning /re/PURPOSE PERFORMANCE Collection, the very first of its kind, is a sustainable approach to timeless rugs. Comprised of uniquely plush recycled water bottles that have been processed with our proprietary two-step procedure, the fibres are enhanced to look and feel like luxurious natural wools.

Bleach-cleanable and moisture-resistant, these rugs are also an eco-conscious solution, built to last several generations. These rugs are soft and luxurious while being strong enough for commercial use. Due to the impermeability of resin from which these fibres are made, liquid stains sit on the surface versus sinking inside, creating permanent damage.

HOW IT WORKS



1

DISCARDED WATER BOTTLES

Non-BPA water bottles are collected and sorted by colour for recycling. The resulting fibres are non-toxic and safe. The bottles are then stripped of labels and caps ahead of processing.



2

SLICED AND HEATED

Thousands of bottles are then washed and crushed and sliced into flakes. These are then heated and shaped into pellets.



3

PREPARED FOR RUG THREADS

Pellets are melted and extruded to make fibres. The material is cramped, cut, drawn and stretched and then baled. The baled fibre can be processed into threads suited for rug weaving.



4

TRANSFORMATION

Fibres are then altered from a shiny, plastic look to a soft, plush wool-mimicking fibre through a two-step, proprietary process developed exclusively by our teams. Extreme temperatures encourage the fibres to morph. This innovation makes our /re/PURPOSE PERFORMANCE fibres completely unique and luxurious.



5

/re/PURPOSE PERFORMANCE

The fibres are now ready for weaving. We use only permanent, handmade constructions to make our rugs ensuring the rugs will last for generations. This also minimises any environmental impact caused versus the more energy demanding, machine-made rug constructions.



CRAFTSMANSHIP

Every Jennifer Manners textile is the result of a passion for timeless design, acute attention to detail and the support of talented craftspeople. The weeks and months of meticulous work that goes into each rug results in a unique heirloom piece that will last for generations. Our rugs are traditionally and ethically crafted in two main locations: Kathmandu, Nepal and Bhadohi, India. As well as championing the time-honoured craft of rug weaving, it is a founding principle of our business to engage, inspire and - most importantly - empower the artisans who work for us. With this, we work endlessly to ensure no child labour is ever used.



JENNIFER
MANNERS

LUXURY HANDMADE RUGS

LONDON

Unit 104 Centre Dome,
Design Centre Chelsea Harbour,
London SW10 0XE
United Kingdom
+44 (0)20 3903 0687

NEW YORK

New York Design Center,
Suite 911, 200 Lexington Avenue,
New York, NY 10016
USA
1-646-293-6613

www.jennifermanners.com