



# A NEW WAY TO SCAN THE WORLD



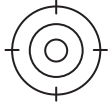
## FJD Trion™ S1

3D LiDAR SCANNER

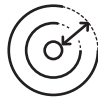
Standard Pro

# A NEW WAY TO SCAN THE WORLD

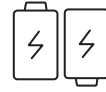
With an industry-leading SLAM algorithm, S1 and S1 Pro can quickly capture high-quality scans, while processing and displaying accurate point clouds on the mobile terminal in real-time.



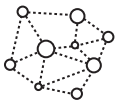
**2 cm**  
Accuracy



**120 m**  
Range



Dual Battery  
Hot-swappable



Real-Time Point  
Cloud

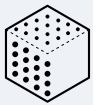


Indoor & Outdoor  
Scanning



Lightweight  
and Portable

## S1

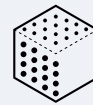


**320,000**  
Points per second



**16**  
Sensors

## S1 Pro



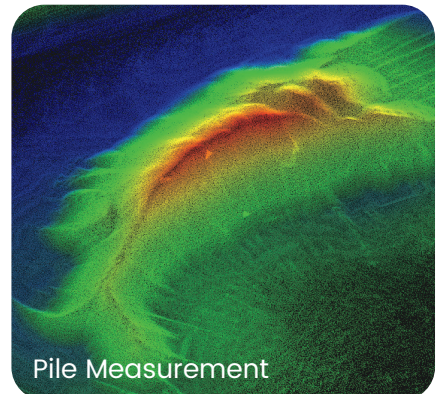
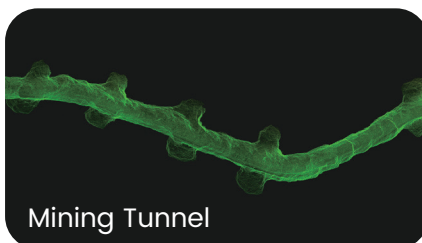
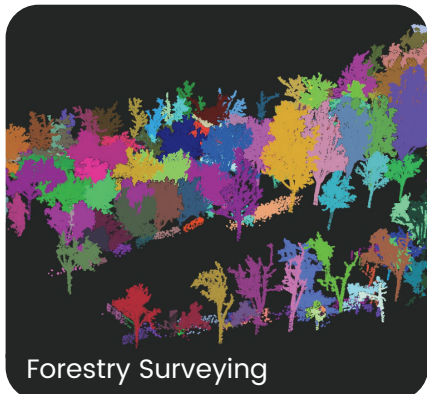
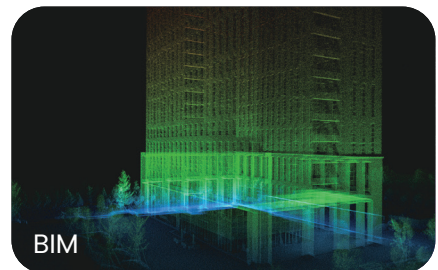
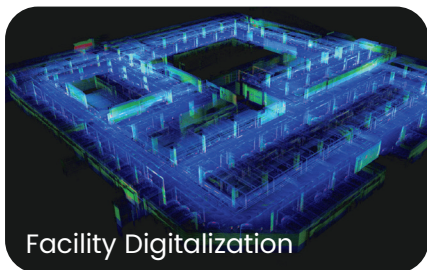
**640,000**  
Points per second



**32**  
Sensors

## APPLICATION SCENARIOS

Indoor, outdoor and even underground without a GNSS receiver.

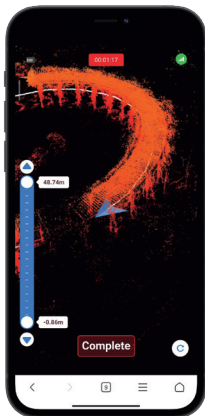


# AS VERSATILE AS IT IS PORTABLE

Lightweight design for easy portability.  
Real-time point cloud display and SLAM processing.



## YOUR POINT CLOUD STUDIO



### TRION SCAN

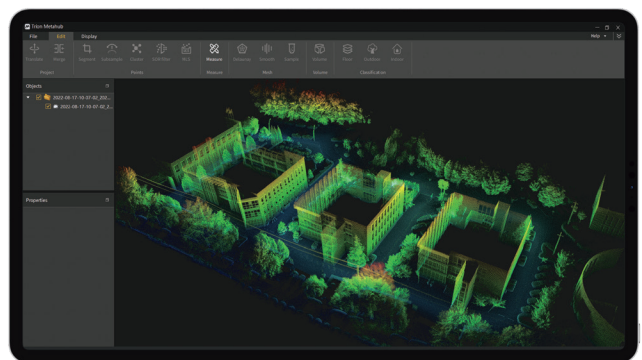
Real-Time Visualization of 3D Point Clouds Software

- Displays the scanned project files, storage capacity, and battery life
- Visualizes the point cloud in real-time
- Tracks real-time path
- Manages and downloads the project files

### FJD TRION MODEL

Point Cloud Post-Process Software

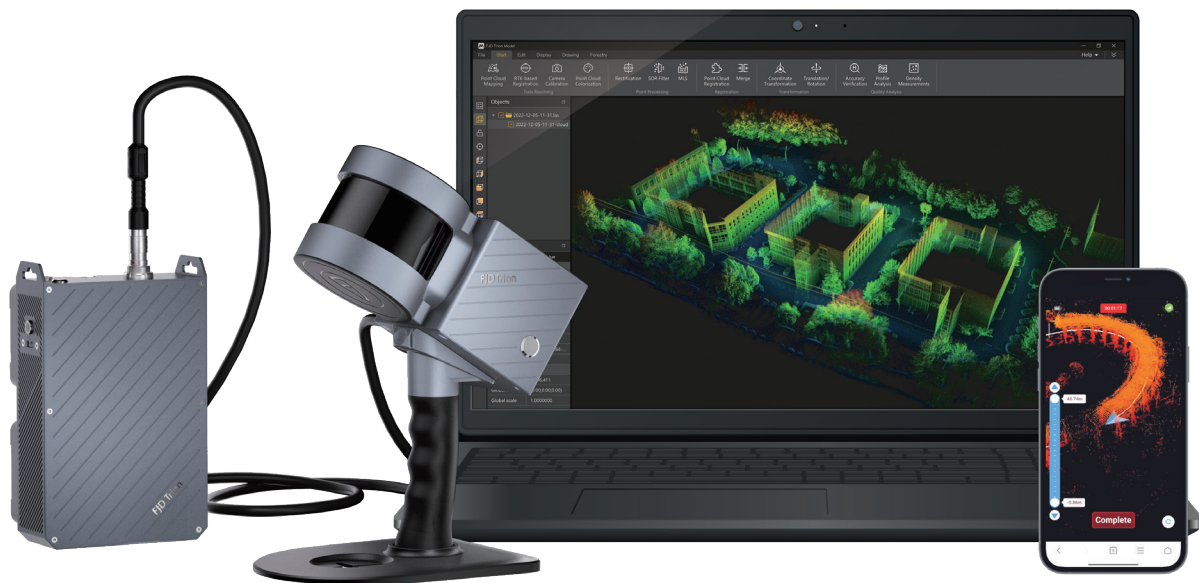
- Denoises and colorizes point clouds
- Stitches point clouds, maps shadow, transforms coordinates, and does automatic plane fitting
- Classifies point clouds, produces 2D drawings, and builds 3D models



# QUICK SPECS

	<b>S1</b>	<b>S1 Pro</b>
Range	120 m	120 m
FOV	360° × 270°	360° × 270°
Points per Second	320,000	640,000
Display	Real-time preview on mobile terminal	Real-time preview on mobile terminal
Datalogger Weight (incl. single battery)	2.2 kg	2.2 kg
Battery Life (Dual battery)	4 hours	4 hours
Ingress Protection	IP 54	IP 54
Sensors	16	32
Laser Class	Class 1 / $\lambda$ 905 nm	Class 1 / $\lambda$ 905 nm
Relative Accuracy	2 cm*	2 cm*
Processing	Real-time	Real-time
Carrier	Backpack or shoulder strap	Backpack or shoulder strap
Scanner Weight	1.8 kg	1.8 kg
Storage Capacity	512 GB	512 GB

\*Measured in experimental environment



Contact Us: [onlinestore@fjdynamics.com](mailto:onlinestore@fjdynamics.com)  
 Address: 15 SCOTTS ROAD #03-12, Singapore

[store.fjdynamics.com](https://store.fjdynamics.com) 🔍



**CREATE FOR A BETTER WORLD**

Copyright © 2022 FJDynamics. All rights reserved.