

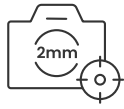


FJD Trion™ P1

LiDAR SCANNER

NEW DIMENSIONS UNFOLD

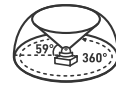
Whether you are a seasoned pro or just 3D-curious, a walk around the site with the P1 lets you digitize your environment quickly and accurately.



Relative Accuracy
Up to 2 mm



Scanning Range
40 m @ 10% reflectivity
70 m @ 80% reflectivity



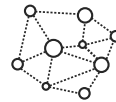
LiDAR FOV
360° × 59°



Points Per Second
200,000



Lightweight and Portable
1 kg / 2.2 lbs



Real-time Point Cloud
Visualize as you scan

EASY REALITY CAPTURE

Indoor, outdoor, underground, all day long

Powerful SLAM technology enables the P1 to work in direct sunlight or even at night, in locations that may be inaccessible with traditional methods.



Compact yet mighty

Weighing in at only 1 kg or slightly over 2 lbs, the P1 fits in a messenger bag and can work all day with easy battery swaps, recreating your environment in minutes.



REBUILD WHAT YOU SEE

Advanced SLAM technology does not have to cost a fortune. No more complicated instrument calibration or lengthy workflows processing point cloud data. The plug-and-play design and accessible price point of the P1 empowers you to explore boundless creativity, streamline data processing, and digitize assets with ease.

Workflow



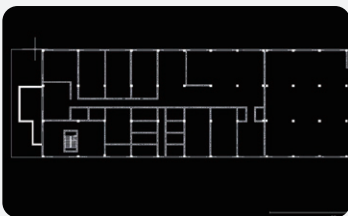
Capture

Walk, scan, and view point cloud data in real-time.



Analyze

Process point cloud data in las, pcd, pts, ply using Trion Model. Scan to post-processing time ratio is about 3:1.



Deliver

Calculate distance, area, and volume. Create contours, floor plans, forest analyses, and 3D models like BIM.

CONFIGURATIONS

Camera

Capture RGB videos with camera.



RTK

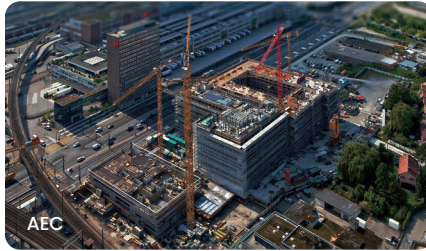
Generate georeferenced point cloud data.



APPLICATION SCENARIOS



Property Management and Assessment



AEC



Public Safety



Media and Entertainment



Robotics



Forestry and Vegetation Analysis

QUICK SPECS

Weight	1 kg (excluding camera & baseplate)
Dimensions	160 × 120 × 270 mm (excluding camera)
Relative Accuracy	Up to 2 cm* *Tested in experimental conditions
Scanning Range	40 m @10% reflectivity 70 m @80% reflectivity
Laser Wavelength	905 nm
Laser Rating	Eye-safety Class I
Field of View	360° x 59°
Number of Laser Heads	1
Point Rate	200,000 points/second
Point Cloud Processing	Real-time processing
Point Cloud Display	Real-time point cloud preview

Power Source	Rechargeable Grip Battery
Power Supply	10.8 V, 3 A
Power Supply Interface	Type-C
Data Transmission	USB-3.0
Power Consumption	12 W (Scanner only)
Battery Life	2 h (Grip Battery, Room Temperature, Scanner only)
Wi-Fi	2.4, 5 Ghz
Internal Memory	512 GB
Operating Temperature	-10 C ~ 45 C
Camera Resolution	5760 × 2880 @ 30 fps
Camera Field of View (FOV)	180°

Contact Us: onlinestore@fjdynamics.com
Address: 15 SCOTTS ROAD #03-12, Singapore

store.fjdynamics.com 🔍



CREATE FOR A BETTER WORLD

Copyright © FJDynamics. All rights reserved.