



INDUSTRIAL NUT RIVETER

OPERATOR'S MANUAL



NEED HELP?

(206) 453-6776

www.arestool.com

customerservice@arestool.com

Don't forget to register your product!

Get to Know Your Industrial Nut Riveter

This quality nut riveter is more compact than many typical industrial hand riveters and provides a nearly effortless functionality. Used to install rivet nuts into materials that are too thin to tap for screws, this riveter has everything you need to get the job done right the first time, every time.

With its aluminum body and Chrome-Moly steel handle, this riveter is designed to be tough enough to last a life time and can be used with aluminum, steel, and stainless-steel rivet nuts. It even features two-tone, ergonomically designed hand grips for increased comfort and reduced hand strain during prolonged use.

Set Includes:

- Industrial Nut Riveter
- M5 mandrel set
- M6 mandrel set
- M8 mandrel set
- 10-24 mandrel set
- 1/4-20 mandrel set
- 5/16-18 mandrel set
- 10 rivet nuts for each nose piece
- Mandrel wrench



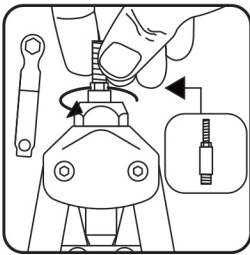
INDUSTRIAL NUT RIVETER

OPERATOR'S MANUAL

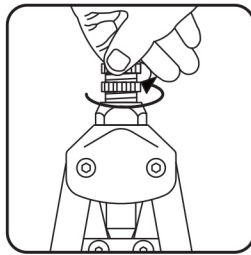
Prep:

Read these instructions carefully before using your riveter.

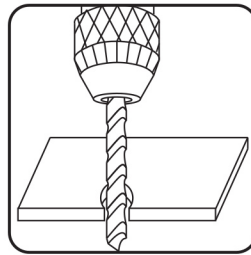
1. Select the correctly sized mandrel you need and screw it into the tool body.
2. Use the included mandrel wrench to tighten the mandrel.
3. Select the correctly sized nosepiece you need and screw it into the tool head.
4. Bore rivet holes in both workpieces.
5. Open the tool handle.
6. Screw the rivet nut onto the head of the mandrel.



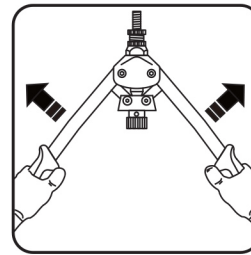
Step 1 | 2



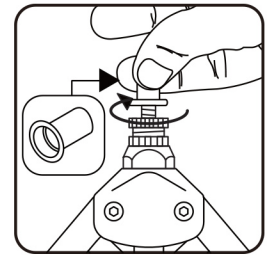
Step 3



Step 4



Step 5

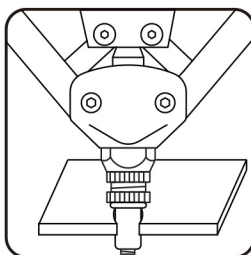


Step 6

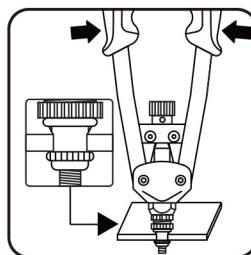
Operation:

Read these instructions carefully before using your riveter.

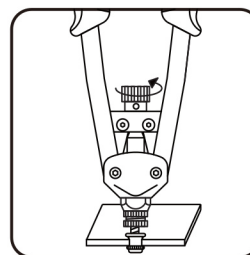
1. Insert the rivet nut into the workpiece.
2. Squeeze riveter handles firmly to make the rivet nut tightly clench the workpiece.
3. Unscrew the mandrel from the rivet nut by turning the mandrel knob counterclockwise.
4. Now you're ready to fasten a screw into the rivet nut.



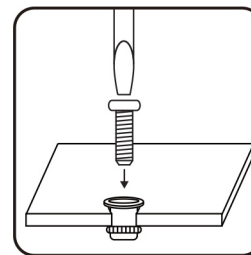
Step 1



Step 2



Step 3



Step 4

INDUSTRIAL NUT RIVETER

OPERATOR'S MANUAL

Maintenance:

1. Keep your riveter clean by wiping it with a clean, dry cloth after each use.
2. Cover it with a clean, dry cloth when not in use or store it in your toolbox to prevent dust or debris buildup.
3. Check your riveter for damage before each use.

Troubleshooting:

When applying rivet nuts to soft materials, it may be necessary to use the Lock Nut to prevent over-compression of the rivet nut, which could distort or weaken the workpiece.

Adjust the nose piece in or out of the head of the tool until desired compression is attained, then lock it in position by screwing the Lock Nut firmly against head.

Warning: Always wear eye protection when operating this or any other riveter.

Additional Products:

If you need additional riveting gear, you can find it on Amazon or on our web store under the following part number:

70417 Industrial Hand Riveter

70017 Professional Pop Rivet Gun with 60 Rivets

INDUSTRIAL NUT RIVETER

OPERATOR'S MANUAL

You are backed by the ARES Tool Performance Assurance!

ARES TOOL warrants this product to be free from defects in materials and workmanship under normal use and service. A defective product may be returned for a free replacement within 90 days from the date of purchase, provide that product is returned immediately after discovery of defect. This warranty shall be valid only when proof of purchase (receipt) showing the date of purchase accompanies the defective product.

Exclusions:

These warranties exclude blades, bits, punches, dies, bulbs, fuses, batteries, and other consumables which must be replaced under normal use and service. These warranties shall not apply to any product or part which is used for a purpose for which it is not designed, or which has been repaired or altered in any way so as to affect adversely its performance or reliability, nor shall these warranties apply to any product or part which is subject to misuse, neglect, accident, or wear/tear incident to normal use and service.