

DISASSEMBLY & REASSEMBLY

Please see this how-to video for a complete disassembly and reassembly demonstration of our 70017 Pop Rivet Gun: <https://youtu.be/gXfp2iFqZps>

You are backed by the ARES Tool Performance Assurance!

ARES TOOL warrants this product to be free from defects in materials and workmanship under normal use and service. A defective product may be returned for a free replacement within 90 days from the date of purchase, provide that product is returned immediately after discovery of defect. This warranty shall be valid only when proof of purchase (receipt) showing the date of purchase accompanies the defective product.

Exclusions:

These warranties exclude blades, bits, punches, dies, bulbs, fuses, batteries, and other consumables which must be replaced under normal use and service. These warranties shall not apply to any product or part which is used for a purpose for which it is not designed, or which has been repaired or altered in any way so as to affect adversely its performance or reliability, nor shall these warranties apply to any product or part which is subject to misuse, neglect, accident, or wear/tear incident to normal use and service

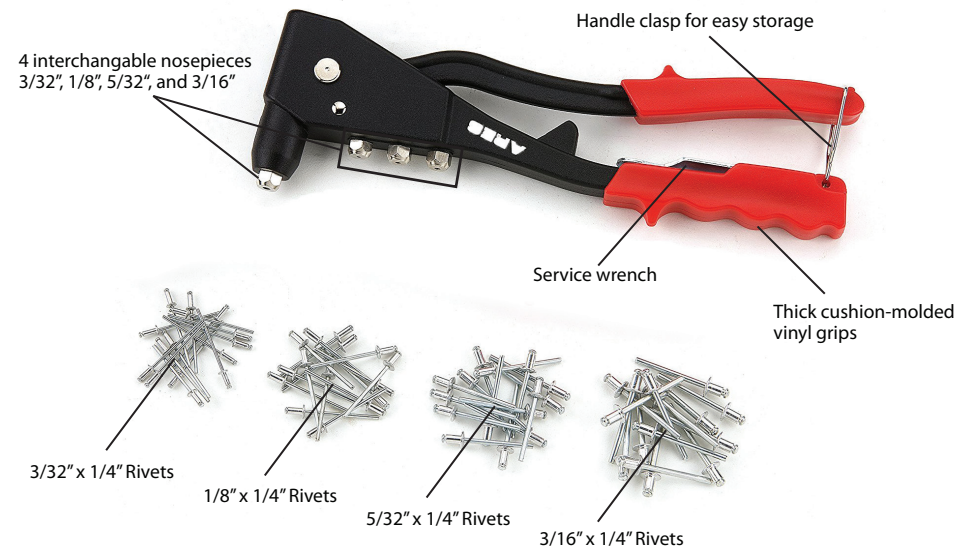
70017



Professional Pop Rivet Gun

OPERATOR'S MANUAL

STORE THIS MANUAL IN A SAFE PLACE FOR FUTURE REFERENCE



NEED HELP?

(800) 340-1442

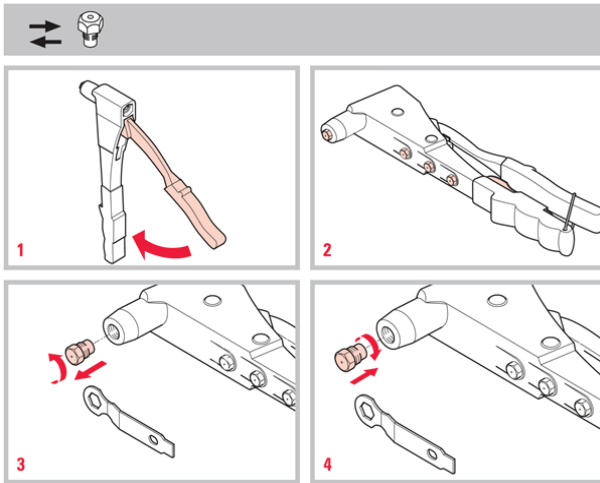
www.arestool.com

customerservice@arestool.com

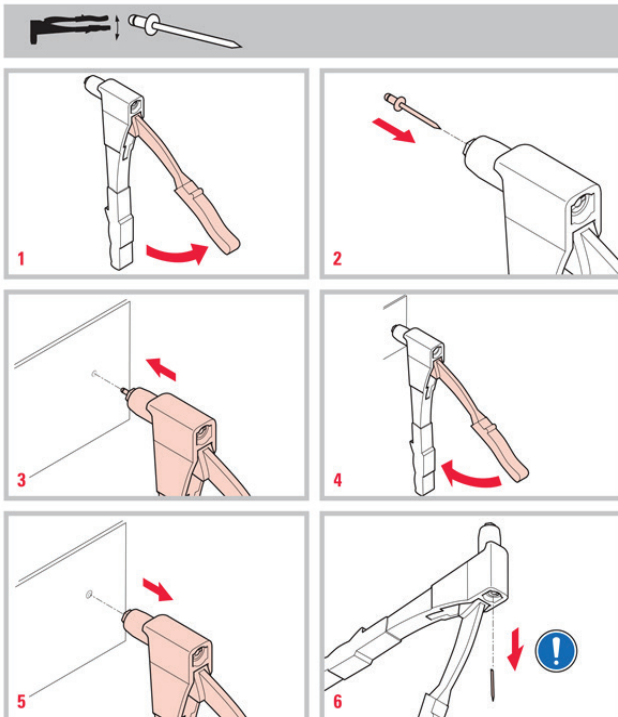
Don't forget to register your product

OPERATION

1. Changing the nosepiece using the provided service wrench



2. Operating the pop rivet gun



1. After you have installed the correct tip for the pop rivet size that you have chosen. Open the pop rivet gun until the handles are spread as far apart as possible.
2. Insert the stem of the pop rivet into the nosepiece as seen in diagram two. If the pop rivet you have chosen won't fit into the hole you will need to change the nosepiece to the size that will accept the chosen rivet.
3. When you are ready to install the rivet, push the blunt end of the rivet firmly against the surface of the object that you intend to install the rivet on and squeeze the handle closed.
4. You should hear a small pop and the stem of the rivet will discharge through the back of the gun as seen in diagram 6.
5. The rivet should now be placed into the desired position.

HOW TO REMOVE A RIVET

1. Drill out the core of the rivet. It's not easy to determine the size of drill-bit needed just by looking at the rivet head, so drill it out with a smaller drill bit than you think necessary, then look into the hole to see if you need a wider bit to drill the remainder.
2. Another method is to grind off the head of the rivet and punch the core through.

JAMMING ISSUES

1. In the off chance that the gun should jam after the rivet has been set in place one solution is to push a nail into the nosepiece to force the stem of the rivet out of the back of the gun.

MAINTENANCE

1. Remove dust, moisture and other contaminants with a clean brush, or soft, lint free cloth.
2. Do not use any abrasive materials that could damage the tool.
3. When the tool is not in use store the tool with the handles clasped together in a clean dry area.