

LEAN ON ME | CLOTHES RACK

Designed by Jonas Søndergaard

GREAT STORAGE FOR SMALL SPACES

The Lean On Me clothes rack lets you comfortably store all of your outdoor essentials whilst still making the most of the space available.

Designed to lean at an angle away from the wall at its base, Lean On Me takes up almost no space on the floor.

Perfect for narrow hallways and other places where room is tight, its head turning design makes it an impressive piece to greet visitors in the important entrance area of the home.

Find more info on our website umage.com



DIMENSIONS

H: 182 x W: 78 x D: 32 cm / 71.7 x W: 30.7 x D: 12.6"



MATERIAL

Steel (plated brass) and Leather (artificial)



CONSTRUCTION

Steel: Powder coated. Electroplated steel (brass look). Steel pipes are joined using rivets. 4 suitable wall screws needed for given wall (screws and rawlplugs not included). 2 pinol screws to mount top shelf to wall brackets (screws and rawlplugs not included).



WEIGHT INCL. PACKAGING

8.2 kg / 18.1 lb



PACKAGING

8.2 kg / 18.1 lb



ASSEMBLY TIME

30 min - video guide at umage.com



MEDIA KIT

Photos and press material
Download at umagepress.com

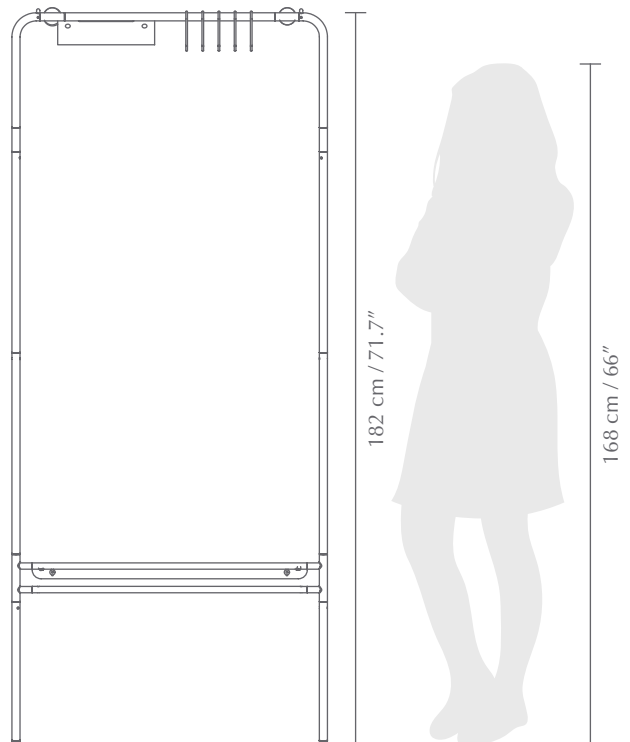
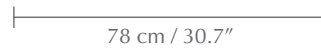
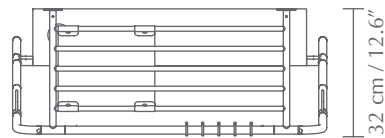


ORDERING INFORMATION

Lean On Me white
Lean On Me black

#5250

#5251



COLOUR VARIATIONS



white



black




UIMAGE

The specifications and dimensions are subject to change without notice. Document date: 19-05-2020 | info@umage.com | www.umage.com
Kongens Nytorv 15, DK-1050 Copenhagen K | +45 31 39 31 31 (tel) & 185 Wythe Ave 2FL, Brooklyn, NY 11249 | +1 646-790-7171 (tel)