

Ace Lounge

Balancing the refined and relaxed



normann

C O P E N H A G E N

Nonchalant elegance

The Ace series aims at urban dwellers, who prioritize quality and aesthetics but who must also adapt to the limited space of life in the city. With a recurring design trait of friendly, organic lines, Ace offers maximum comfort in condensed form. Designer Hans Hornemann has worked on a chair's basic components – backrest, seat and legs – and has created a functional and aesthetic design with a more petite stature than traditional lounge furniture. The design balances finely between the refined and the relaxed. Rounded contours emphasize the inviting volume of the full upholstery and are framed elegantly by the piping around the seat and back. A backward-leaning backrest and cheekily angled legs give edge and attitude, resulting in a design of timeless and nonchalant elegance.



Ace lounge chair

Collection Overview

Ace Lounge Chair
Oak



Ace Lounge Chair
Black



Ace Lounge Chair
Brass



Ace Lounge Chair
Black Metallic



Ace Sofa
Oak



Ace Sofa
Black



Ace Sofa
Brass



Ace Sofa
Brass



Ace Footstool
Oak



Ace Footstool
Black

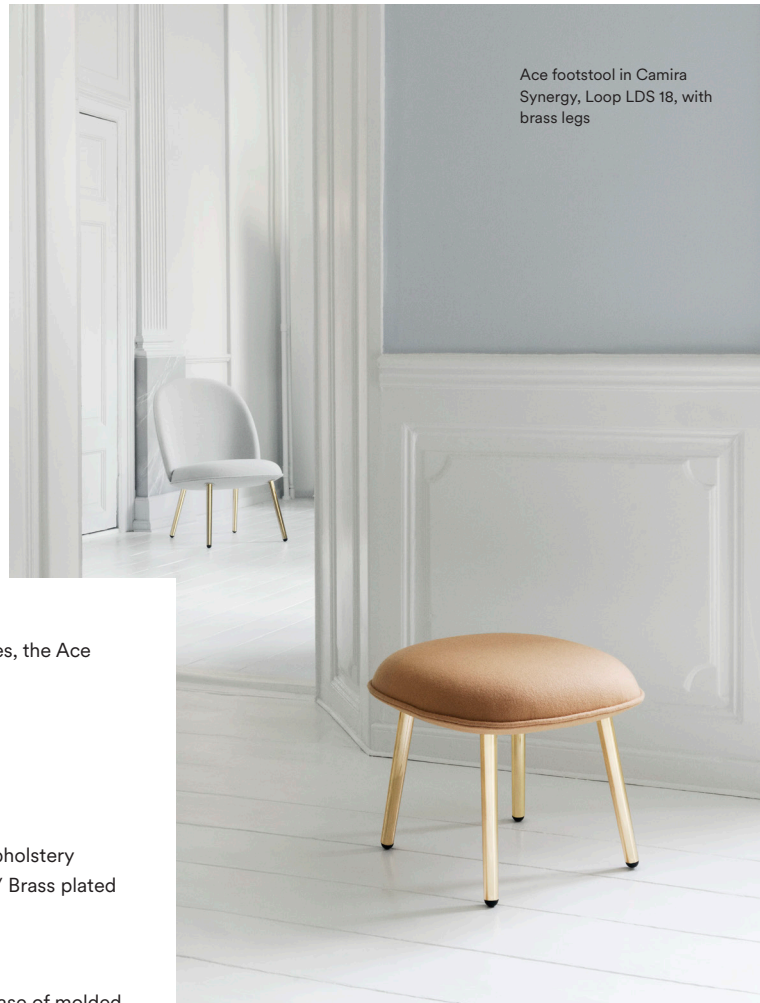


Ace Footstool
Brass



Ace Footstool
Brass





Product Facts

Description

With a recurring design trait of friendly, organic lines, the Ace range offers maximum comfort in condensed form.

Designer / Year Of Design

Hans Hornemann / 2016

Material

Shell: Veneer, PU foam, steel reinforcement with upholstery
Legs: Lacquered oak / Painted and lacquered oak / Brass plated steel / Black plated steel

Construction

The back is constructed of molded PU foam on a base of molded veneer for flexibility and the highest possible sitting comfort. The seat is made in molded PU foam with a steel reinforcement. Textile or leather upholstery. Ace is easily assembled. Assembly manual included.

Maintenance

Frequent vacuuming with a soft fitting is recommended both for textile to preserve color and appearance.

Textile: Clean with textile or upholstery cleaner.

Please be aware that sharp objects can leave marks.

We recommend to check and tighten screws every 3-6 months.

Please make sure your choice of glides is suitable for the type of flooring. We recommend to check the glides every 3-6 months.

If worn down, please replace.

Accessories

Comes with PE glides. Felt glides can be purchased separately.

See [Glides Overview](#).

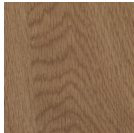
Test

Ace lounge chair and sofa

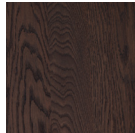
EN 1022:2005 and EN 16139:2013. Level 2

Material Options

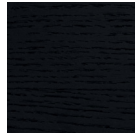
Wood Legs



Oak



Smoked Oak



Black

Steel Legs



Brass

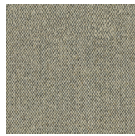


Metallic

Upholstery



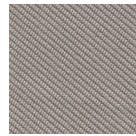
Camira
Synergy



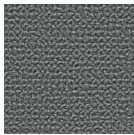
Camira
Main Line Flax



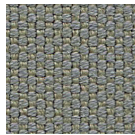
Camira
Aquarius



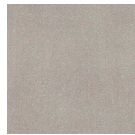
Camira
Oceanic



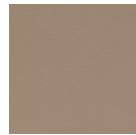
Camira
Yoredale



Camira
Zap



JAB
City Velvet

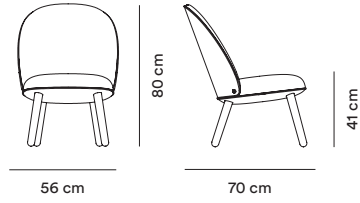


Sørensen Leather
Ultra

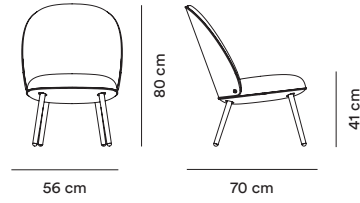
The listed upholstery options come in a wide range of colors. See our [Material Guide](#) for color references.

Measurements

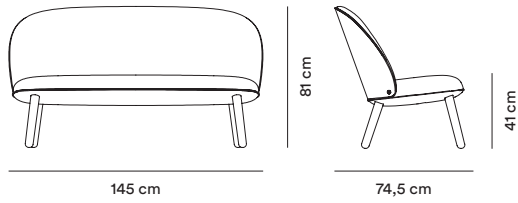
**Ace Lounge Chair
Wood**



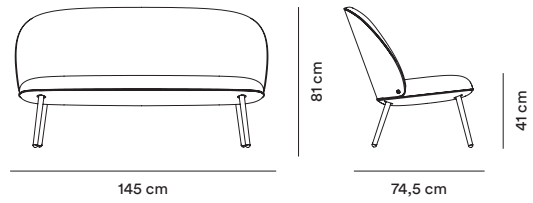
**Ace Lounge Chair
Steel**



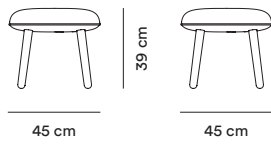
**Ace Sofa
Wood**



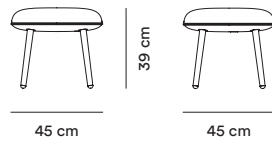
**Ace Sofa
Steel**



**Ace Footstool
Wood**



**Ace Footstool
Steel**



Ace Lounge



Left:
Ace footstool in Camira Synergy, Wed LDS 34, Bracket LDS 23 and Loop LDS 18, with brass legs

Below:
Ace lounge chair, shown with Jam bookcase and Eddy table lamp



Ace Lounge

Ace lounge chair, shown with Lug table



Ace Lounge



Left:
Ace lounge chair in JAB
City Velvet, 027, with black
metallic legs

Below:
Ace sofa in Camira
Synergy, Co-Coperate
LDS 40, with black legs
and Ace lounge chair in
JAB City Velvet, 062, with
black metallic legs



Ace Lounge

Ace sofa in Camira Synergy, Bracket LDS 23, with brass legs, shown with Stage floor lamp and Circus pouf



Contact

Normann Copenhagen

Østerbrogade 70, 2100 Copenhagen, Denmark
normann@normann-copenhagen.com
+45 35 55 44 59

normann

C O P E N H A G E N