

### CONTENT

1. **Front Housing Components**
2. **Back Housing Components**
3. **Solenoid Valve Assembly**
4. **Transmission Sleeve, Outlet Nozzle Assembly**
5. **Boiler, Water Pump, Flow Meter Assembly**
6. **Electronic Scale Assembly**
7. **Common Abnormal Causes & Solutions**

Warning:

All operations should be carried out with machine cooled and power turned off.

# MORNING

## I. Front Housing Components



1. Remove water tanks, trash bin, drip tray, coasters



2. Remove the 4 screws and force down to remove the side cover.



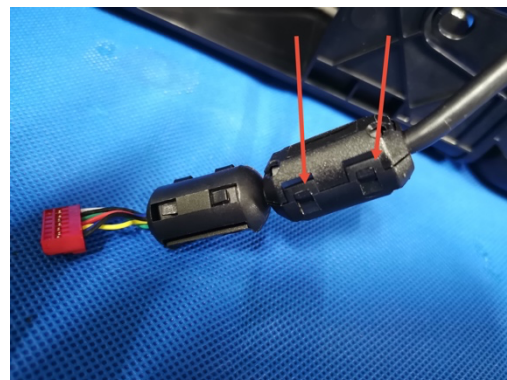
3. Remove the screw and remove the handle



4. Remove the screw cover, remove the screw inside, and forced forward to remove the front shell.

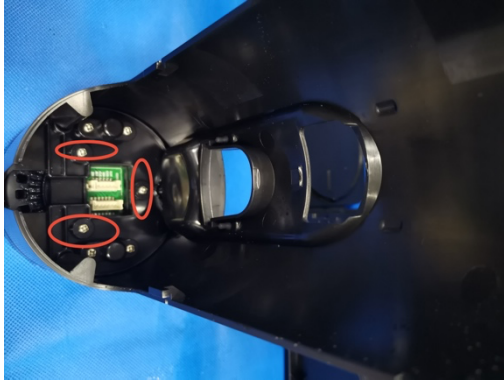


5. Press the latch to remove the front housing assembly.

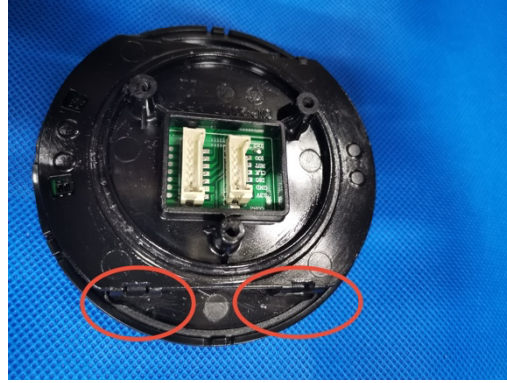


6. Press the buckle to remove the magnetic ring.

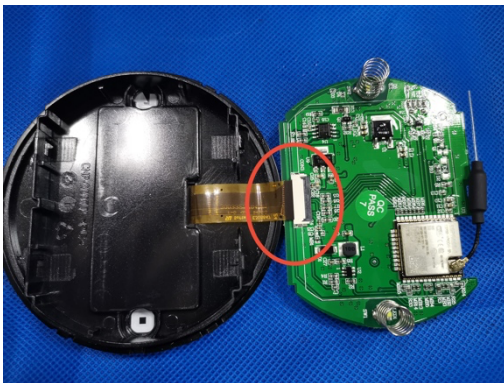
# M O R N I N G



7. Remove the 3 screws, remove the front housing, and adjust the knob ring.



8. Push the lock and open the display module box.

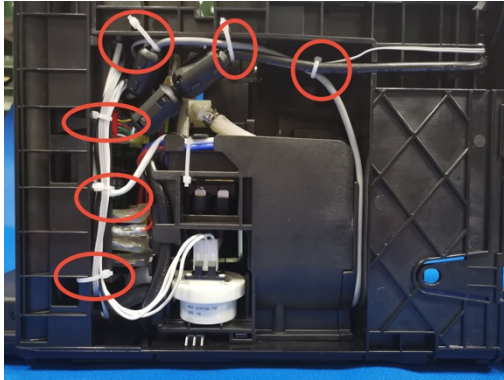


9. Open the lock and remove the screen line.

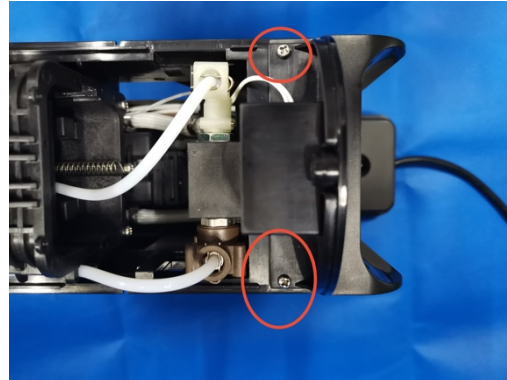
# M O R N I N G

## 2. Back Housing Components

Back housing assembly (replaceable motherboard, low water level board, etc.)

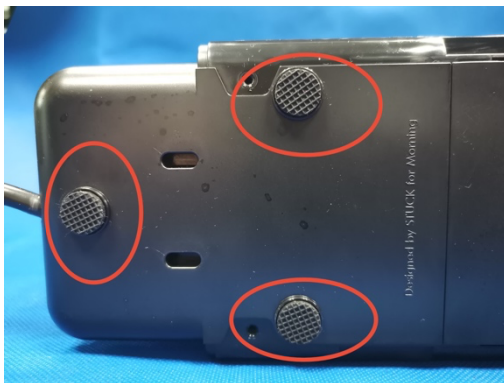


1. Cut fasteners



2. Remove 2 screws

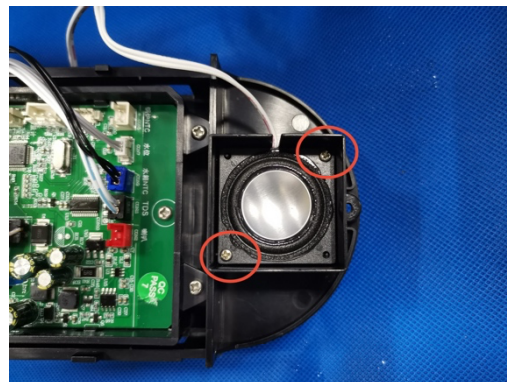
4. Pull out the intake pipe and various terminals on the motherboard.



3. Pull out the 3 pads and remove the 3 screws inside.



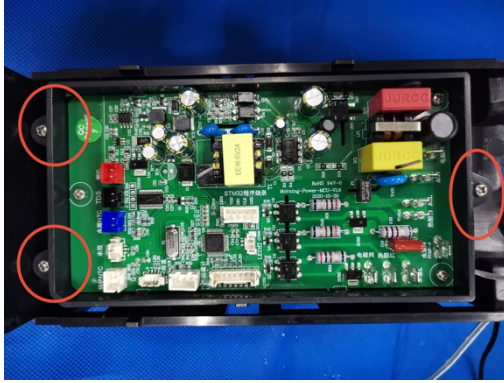
5. Remove the 4 screws and remove the water connector.



6. Remove the 2 screws and remove the horn.



# M O R N I N G



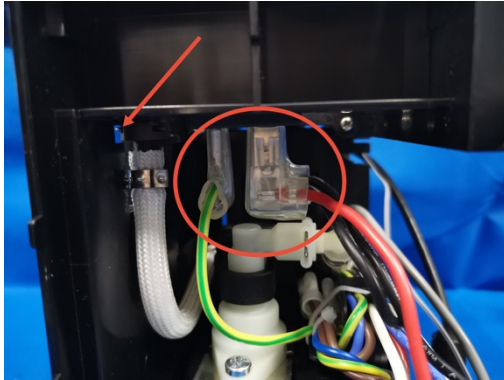
7. Remove the 3 screws and remove the main PCB box.



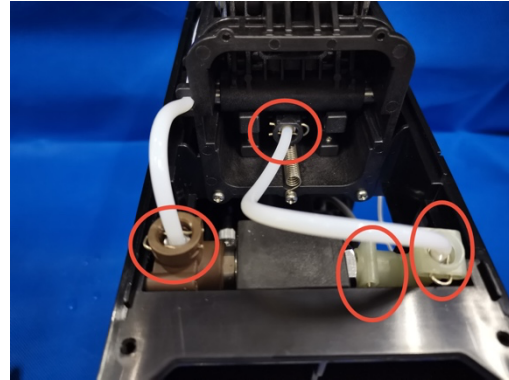
8. Remove the 3 screws and remove the motherboard.

# M O R N I N G

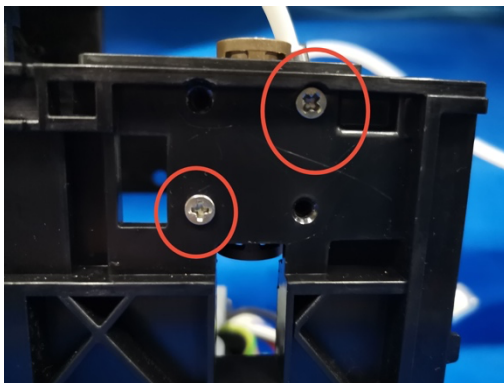
## 3. Solenoid Valve Assembly Replaceable solenoid valve, etc.



1. Remove the terminals and bolt.



2. Remove bolts as needed.

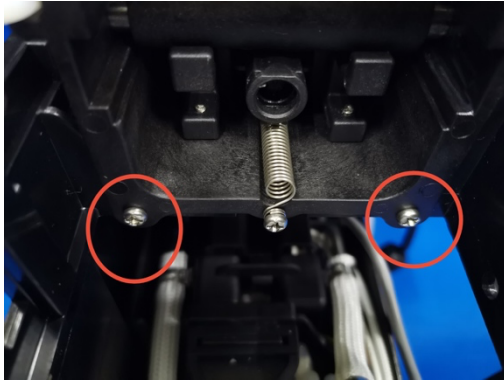


3. Remove the 2 screws and remove the solenoid valve.

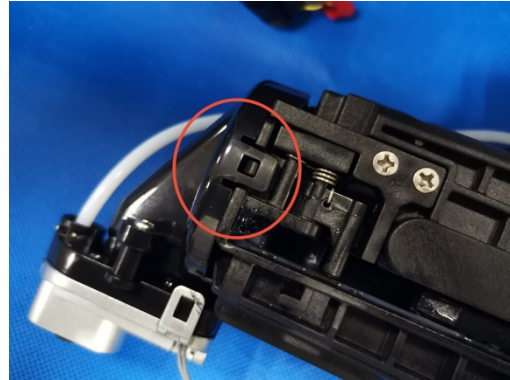
# M O R N I N G

## 4. Transmission Sleeve, Outlet Nozzle Assembly

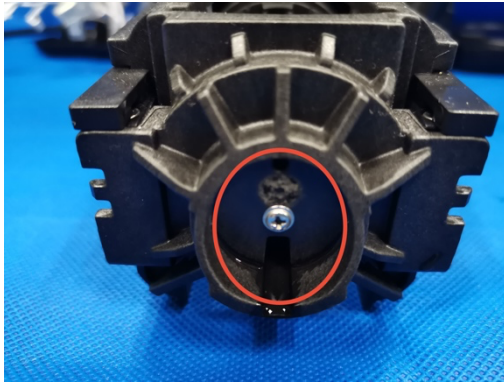
Transmission sleeve, outlet assembly (replaceable filter plate, lamp, etc.)



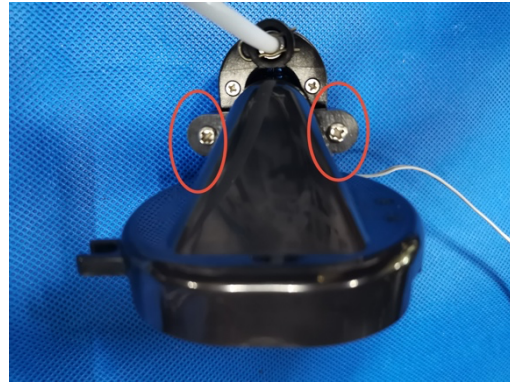
1. Remove the 2 screws and remove the transmission sleeve with force backward.



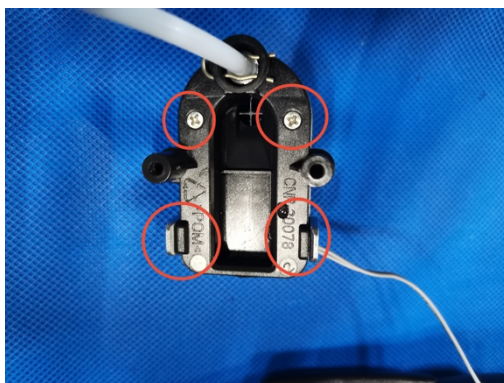
2. Pry the buckle and remove the outlet.



3. Remove this screw and remove the filter plate.



4. Remove the 2 screws and remove the drain nozzle.



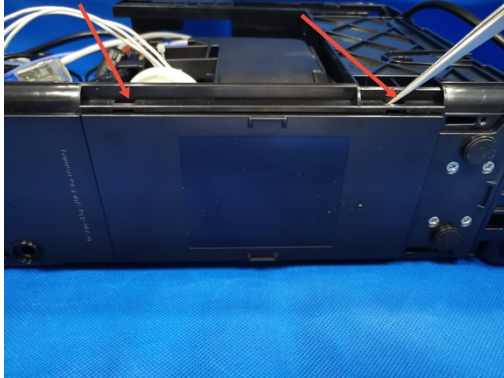
5. Remove the 2 screws, pry open the buckle, and remove the lamp.



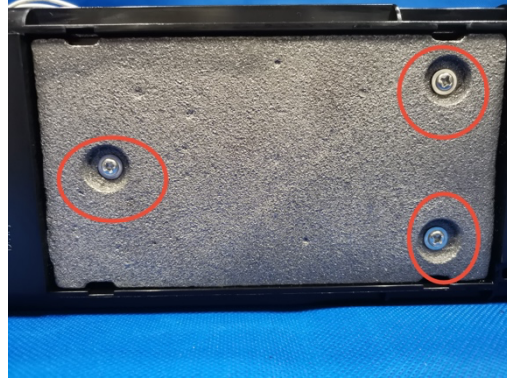
# M O R N I N G

## 5. Boiler, Water Pump, Flow Meter Assembly

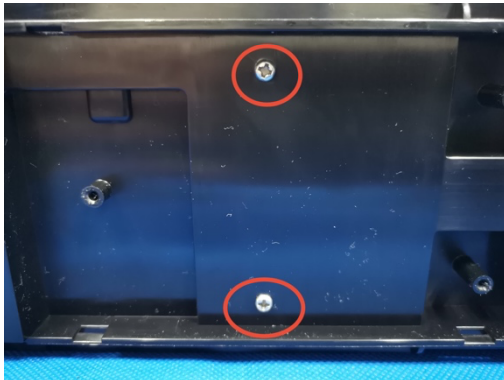
Replaceable Water Pump, Flow meter, etc.



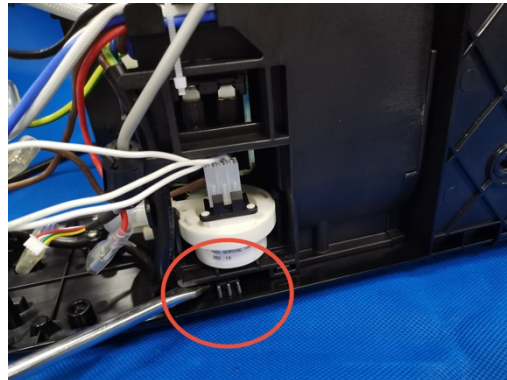
1. Pry open the lock, remove the main small cover.



2. Remove the 3 screws and remove the counterweight block.



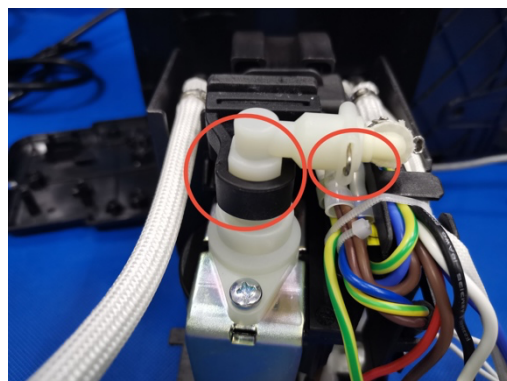
3. Remove these 2 screws.



4. Pry out the boiler bracket.



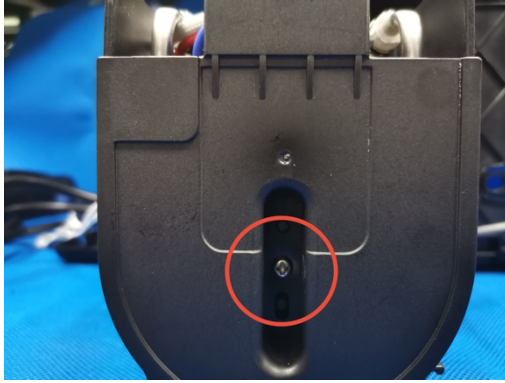
5. Remove the 2 screws and remove the press plate.



6. Remove the bolt and unfasten the Pump retaining silicone.



# M O R N I N G



7. Remove this screw and remove the boiler cover.



8. Remove this screw and remove the fuse holder.

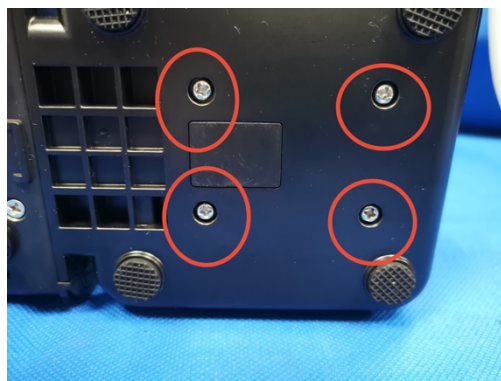
# M O R N I N G

## 6. Electronic Scale Assembly

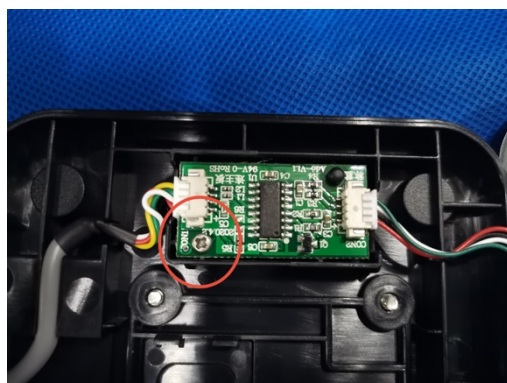
Replaceable electronic scale, adapter plate of electronic scale, etc.



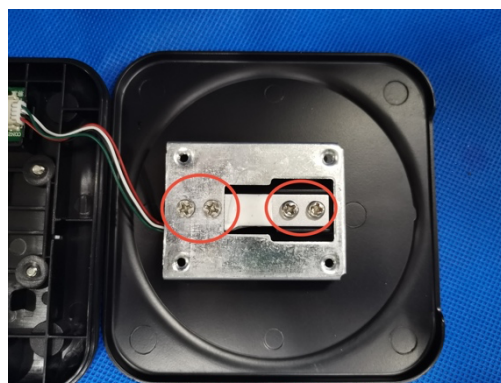
1. Remove the 4 screws and remove the electronic scale components.



2. Remove the screw and remove the upper and lower cover of the electronic scale.



3. Remove this screw and remove the switching plate of the electronic scale.



4. Remove the 4 screws, remove the electronic scale and the lower fixing plate of the electronic scale.

# M O R N I N G

## 7. Common Abnormal Causes & Solutions

Discrepancy	Reason	Possible Solution
Black screen	The display board is broken	Replace the display board
	The terminal connection of the display board is abnormal	Reconnect the terminals or replace the display board cable
No water	The solenoid valve is broken	Replace the solenoid valve
	Water pump is bad	Replace the water pump
Water level anomaly	Abnormal connection of water level plate line	Reconnect the terminals or replace the water gauge wire
	The water gauge is broken	Replacement of water level plate
Abnormal weighing display	The wire connection of the weighing board is abnormal	Reconnect the terminals or replace the weighing board wire
	The connecting plate of electronic scale is broken	Replace the adapter plate of electronic scale
Boiler unheated	The SCR is broken	Replace the SCR
The light doesn't work	The lamp is broken	Replace the lamp
	Abnormal connection of the lamp wire	Reconnect the terminals or replace the light cords
There is no sound	Horn has been bad	Replace the horn
Start up automatic work	The mainboard is bad	Replace the mainboard
No electricity	The mainboard is bad	Replace the mainboard
	The fuse has blown out	Replace the internal conductor
	The closing terminal comes off	Reclose the terminals
Water leakage	The sealing ring assembly is abnormal	Reassemble the sealing ring
	Water pipe burst	Replace the water pipe

Note:

1. There should be anti-static measures in the repair process
2. Do not omit water spring and interface sealing ring during assembly
3. In case of abnormal situation, we should update different versions of the program to eliminate the reason of the software