

Calvi

WHOLESALE

320/220 - WOMEN'S SWEATSHIRT

FABRICATION

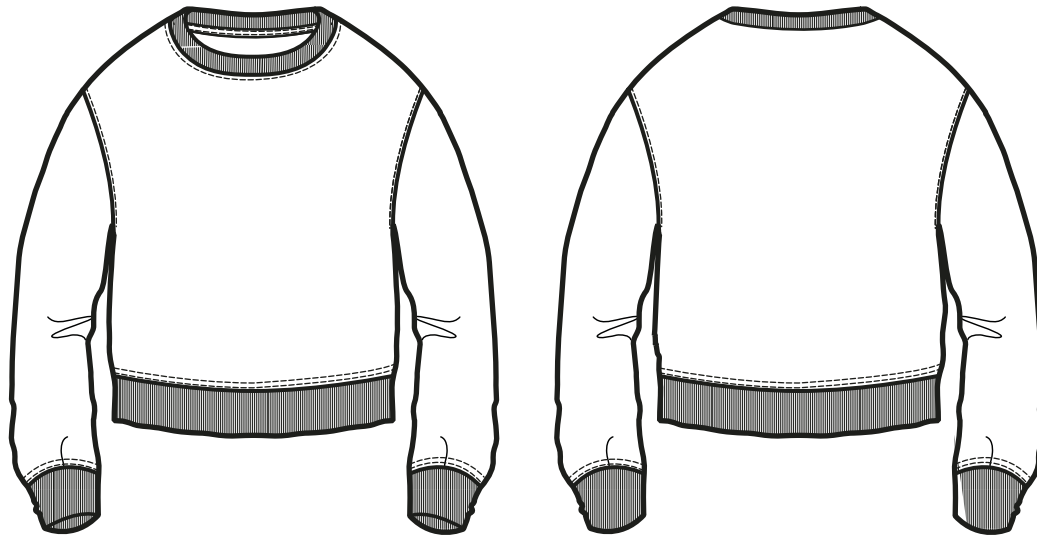
100% ORGANIC COMBED COTTON

50% ORGANIC COMBED COTTON 50% POLYESTER



CU 1000517

MEASUREMENT SPECIFICATION REPORT



Points of Measurement (cms)

Chest

Body Length From HPS

XS	S	M	L	XL	XXL	3XL
56,5	59,5	62,5	65,5	68,5	71,5	74,5
56	58	60	62	64	66	68

Disclaimer: Please note that the above sizing chart is subject to change. For more detailed information, please contact a Calvi Wholesale Service Representative.

CONSCIOUS WEAR

ECO-CONSCIOUS | RETAIL QUALITY | EASY BRANDING