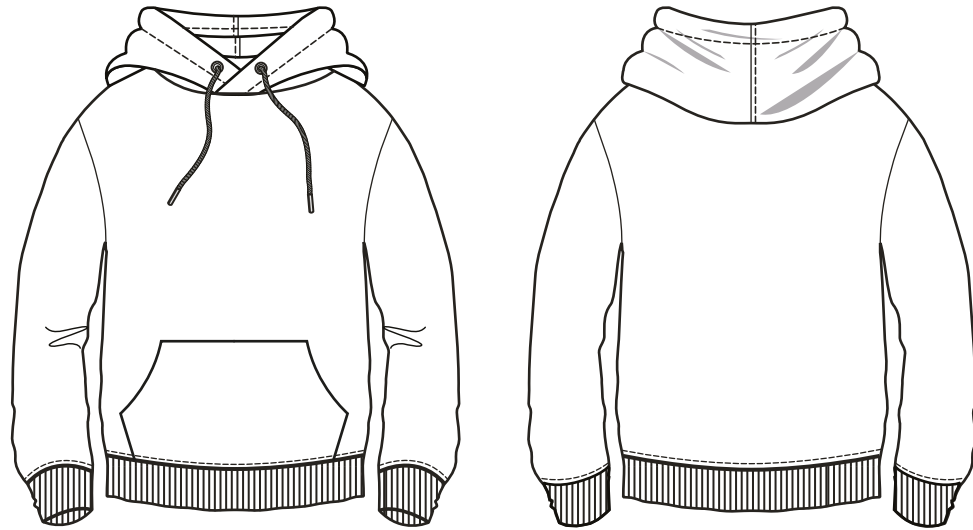


# Calvi

## WHOLESALE

### MEASUREMENT SPECIFICATION REPORT



#### Points of Measurement (cms)

Chest

XS	S	M	L	XL
----	---	---	---	----

47	50	53	56	59
----	----	----	----	----

Body Length From HPS

59	61	63	65	67
----	----	----	----	----

### 320/215 - WOMEN'S HOODIE

#### FABRICATION

100% ORGANIC COMBED COTTON

50% ORGANIC COMBED COTTON 50% POLYESTER



CU 1000517

Disclaimer: Please note that the above sizing chart is subject to change. For more detailed information, please contact a Calvi Wholesale Service Representative.

## CONSCIOUS WEAR

ECO-CONSCIOUS | RETAIL QUALITY | EASY BRANDING