

# Calvi

## WHOLESALE

### 320/210 - WOMEN'S LONG HOODIE

#### FABRICATION

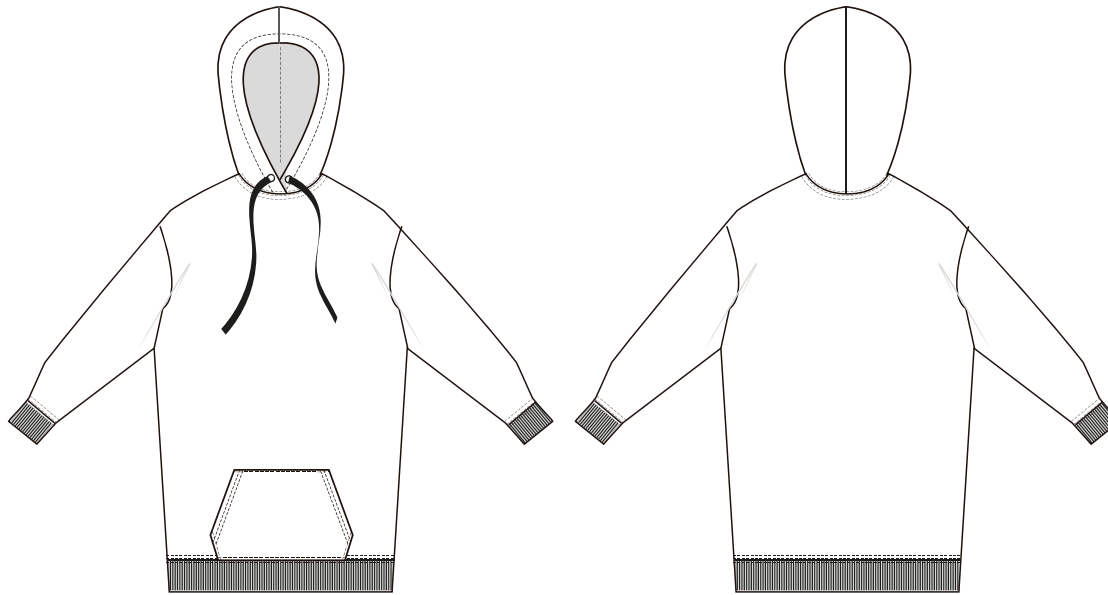
100% ORGANIC COMBED COTTON

50% ORGANIC COMBED COTTON 50% POLYESTER



CU 1000517

### MEASUREMENT SPECIFICATION REPORT



#### Points of Measurement (cms)

Chest

Body Length From HPS

XS	S	M	L	XL	XXL	3XL
54,5	57,5	60,5	63,5	66,5	69,5	72,5
67	69	71	73	75	77	79

Disclaimer: Please note that the above sizing chart is subject to change. For more detailed information, please contact a Calvi Wholesale Service Representative.

## CONSCIOUS WEAR

ECO-CONSCIOUS | RETAIL QUALITY | EASY BRANDING