

Calvi

WHOLESALE

250/308 - MEN'S T-SHIRT

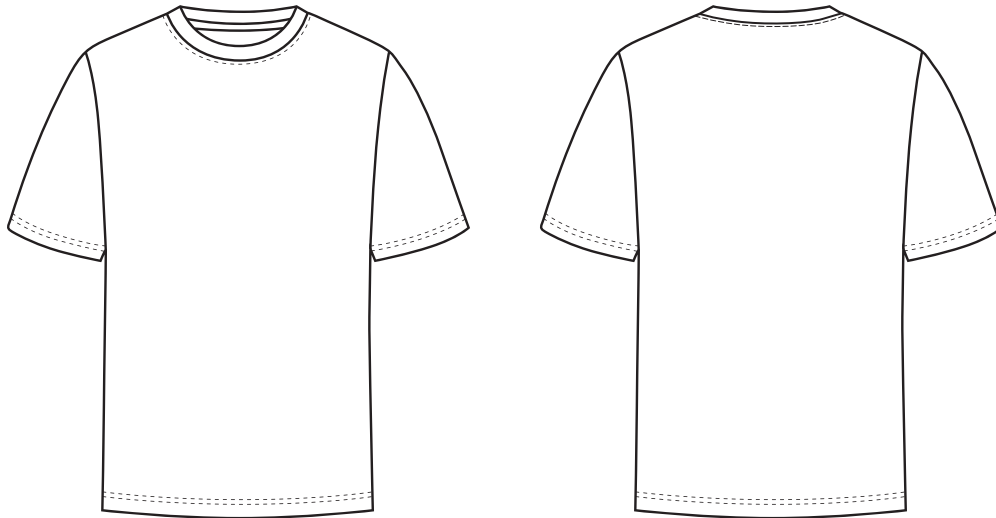
FABRICATION

100% ORGANIC COMBED COTTON



CU 1000517

MEASUREMENT SPECIFICATION REPORT



Points of Measurement (cms)

Chest

Body Length From HPS

| XS | S | M | L | XL | XXL | 3XL |
|----|----|----|----|----|-----|-----|
| 48 | 51 | 54 | 57 | 60 | 63 | 66 |
| 68 | 70 | 72 | 74 | 76 | 78 | 80 |

Disclaimer: Please note that the above sizing chart is subject to change. For more detailed information, please contact a Calvi Wholesale Service Representative.

CONSCIOUS WEAR

ECO-CONSCIOUS | RETAIL QUALITY | EASY BRANDING