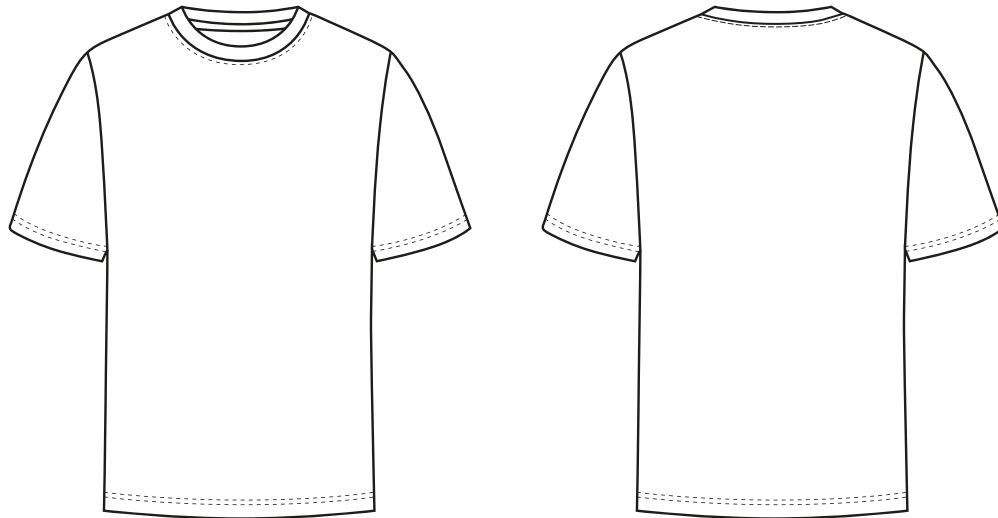


# Calvi

## WHOLESALE

### MEASUREMENT SPECIFICATION REPORT



190/310 - MEN'S T-SHIRT

FABRICATION

100% ORGANIC COMBED COTTON



CU 1000517

Lorem ipsum

#### Points of Measurement (cms)

Chest

Body Length From HPS

| XS | S  | M  | L  | XL | XXL | 3XL |
|----|----|----|----|----|-----|-----|
| 46 | 49 | 52 | 55 | 58 | 61  | 64  |
| 68 | 70 | 72 | 74 | 76 | 78  | 80  |

Disclaimer: Please note that the above sizing chart is subject to change. For more detailed information, please contact a Calvi Wholesale Service Representative.

## CONSCIOUS WEAR

ECO-CONSCIOUS | RETAIL QUALITY | EASY BRANDING