

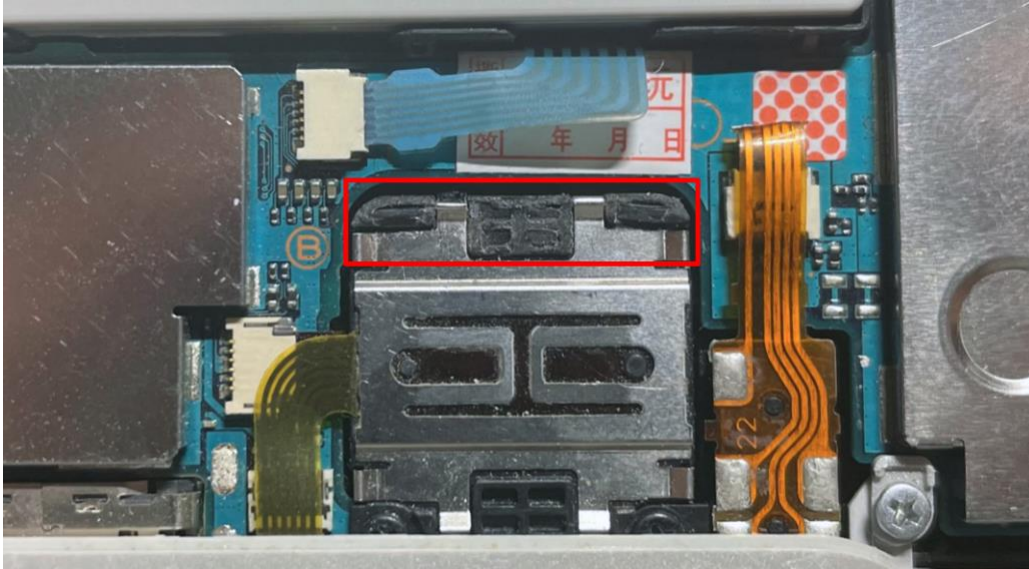
Micro SD Memory Card Adapter for the PSP Go Installation instructions in 5 easy steps

<https://geniusgamemods.com/>

1. Unscrew the back of the PSP Go (also the 2 screws on the top).
2. Clip the small plastic support tabs behind the PSP Go back cover. If you don't remove these, the PSP Go back cover won't close once the adapter card is there.



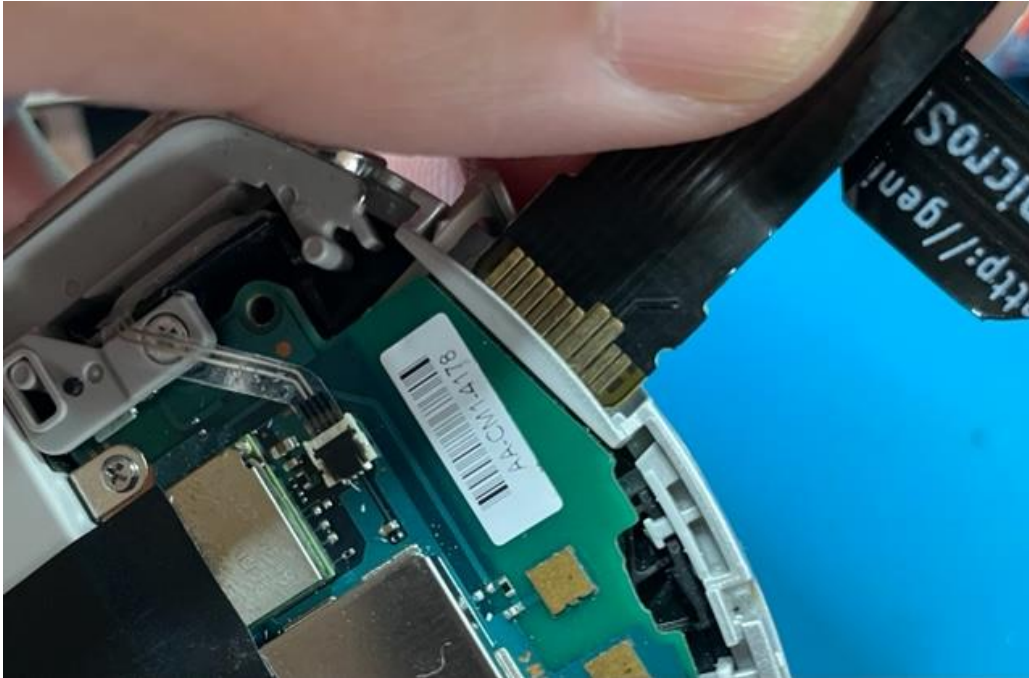
Additionally, you will want to cut flush the small plastics in the highlight area below. This will help reduce any bulging caused by the SD memory card reader.



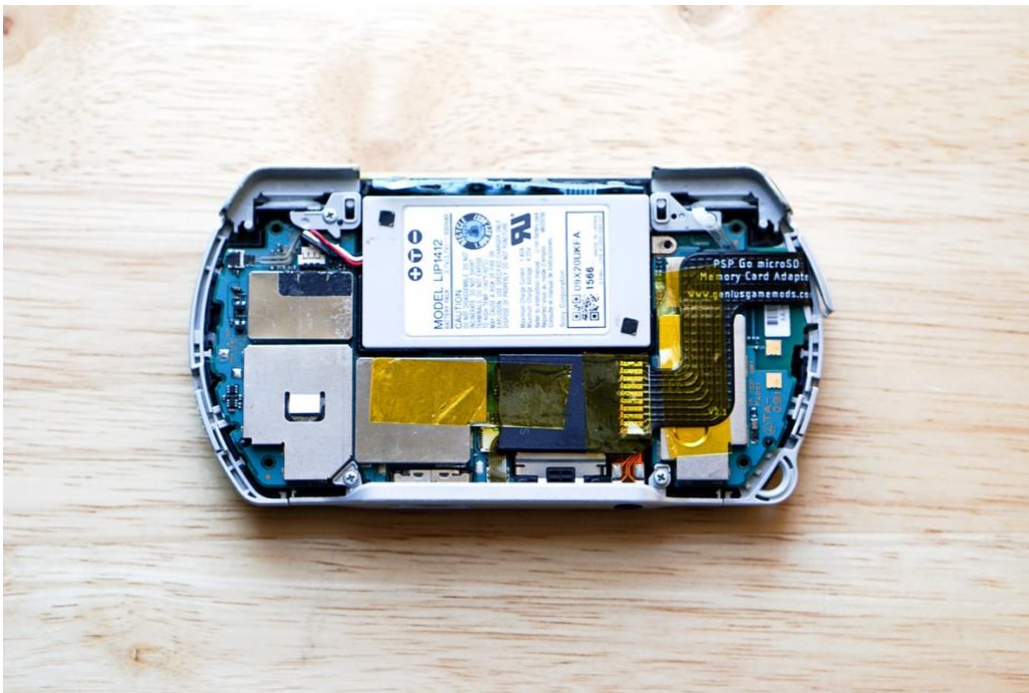
3. Place your Micro SD card inside of the Memory Stick PRO Duo adapter.



4. Open the M2 slot cover on the PSP Go and Insert the adapter in. Once you slot it in, you should hear a clicking sound which means the adapter is inserted and the system should be reading it. If you don't hear a clicking sound, make sure you're pushing it in all the way until it clicks.



5. The adapter cable should easily slot into the back of your PSP Go, so now just place a piece of heat resistant tape or black tape (either are recommended) to hold the Memory Stick PRO Duo card and another piece to hold down the right and left side of the adapter cable as shown.



Notes:

- Adapter supports Micro SD cards up to 128gb.
- Higher capacity cards such as 128gb with lots of data may take a few more seconds than normal to load.
- The Micro SD card adapter is fragile, please be careful to not break it when installing the adapter.
- Upon inserting a Micro SD card for the first time via the adapter, the system will prompt you to format the Memory Stick before it can be fully read. You can go to system settings as there is an option to format the SD card and format the SD card easily.
- If you've inserted the adapter into the M2 slot and it says 0kb in the capacity, or the SD card isn't recognized right away, give it a few seconds to load, and if it doesn't, take it out and re-insert it back in until the PSP Go recognizes the SD card and its capacity.