



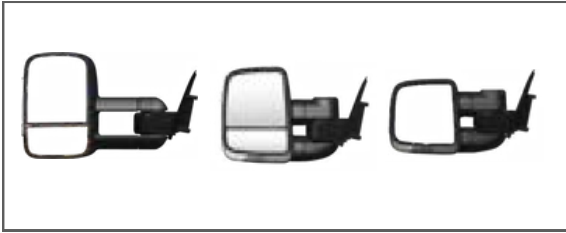
FORD RANGER | EVEREST 2022-CURRENT

Non 360° Camera Models Only

TOWING MIRROR INSTALLATION INSTRUCTIONS

Our Range

Towing Mirrors



Power Boards



Rock Tamers



Tyre Spider



Easy Slides



Power Slides



Expanda Slides



Fridge Cage



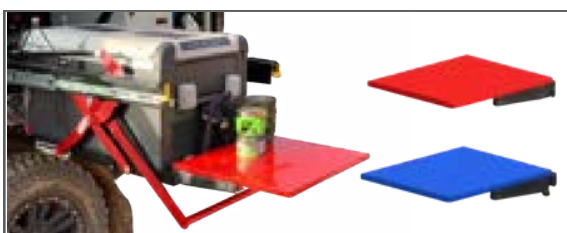
Pantry



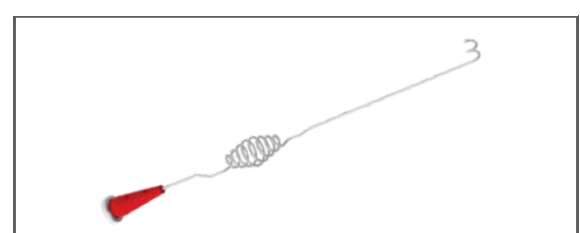
Cutlery Set



Clip on Trays



Cable Saver



Contents

Our Range

Introduction

Getting Started

Before You Start

Maintaining Your Mirrors

Mirror Dimensions

Fitting Instructions

FAQS

Troubleshooting

Getting Started

Clearview mirrors are direct replacement mirrors that mount securely in the same position as your original mirrors.

What's in the box



- 1 x Left hand side mirror & base
- 1 x Right hand side mirror & base
- 1 x Lower Access Panel/LHS
- 1 x Installation instruction

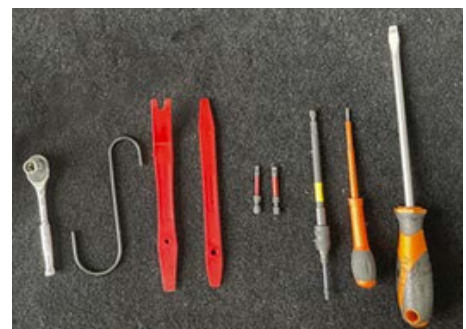


Lower Access Panel



Tools Required:

- 'S'-Hook
- Torx 20 Key with Extension
- Torx 30 Key
- Soft plastic pry-bar (Trim Remover)
- Small Flat Blade Screwdriver
- Phillips head screwdriver



Whilst our mirrors can be installed by one person, the process is quicker and easier when an additional person is available to hold the mirror into position.

Cautions | warnings



CAUTION



WARNING

- Read through the fitting instructions before installation of Clearview Accessories.
- Always install the accessory following the fitting instructions. Failure to do so may cause damage to the vehicle or the accessory.
- Ensure all recyclable discarded vehicle accessory components and packaging are recycled following local recycling regulations.
- It is always recommended that this accessory is fitted by a qualified technician.
- Safely store and protect any removed vehicle components.
- Ensure all bare metal surfaces are protected using Automotive Bare Metal Primer and touch-up paint.
- Remove all metal swarf and dust from all vehicle surfaces if surface is used for accessory installation.
- Your vehicle maybe fitted with the Active Park Assist feature. You should only use this feature with your Towing Mirrors in the fully retracted, driving position.



POWER FOLD

WARNING

DO NOT UNFOLD MANUALLY

If your mirror is equipped with Power Fold. In some cases, the mirror head may be loose before installation as the mirror head needs to be electrically folded and unfolded for a minimum of cycles on its first use to synchronize.

Please refrain from folding the mirror **MANUALLY** as it can reduce the life span of the product.

Important: This mirror is designed to be manually folded upon impact as a safety feature.

COURTESY/PUDDLE LIGHT

Please understand that every car and every model are different, and that some vehicles have different wiring options to other vehicles. We do not know the exact wiring configuration of your vehicle.

If you require the use of the courtesy / puddle light function you will require the assistance of an Auto Electrician.

Clearview Accessories does NOT provide this service unless it's a standard function on the vehicle.

NOTE IF HARD WIRING: Orange Wire: Negative (-) | Grey Wire: Positive (+)

Maintaining Powder Coated Surfaces

Whilst powder coating is a lot more durable, and longer lasting than paint, it can still be affected by dust, dirt, salt water and constant exposure to the weather. For this reason, no protective powder coating is completely maintenance-free.

With the right maintenance, you can increase the life of the finish of your powder coated surfaces:

- Harsh chemicals and solvents can damage powder coating. Once damaged, the surface is a lot more vulnerable to fading and failure.

- We recommend regularly inspecting your powder coat and wiping any dust off with a soft cloth. Clean, good quality micro-fiber cloths are recommended.

- We recommend regular washing with highly diluted mild soap and water. Use a soft towel to gently clean. Rinse and dry with another soft towel.

- If your powder coat is losing its shine, you can apply a thin layer of high-grade non-abrasive car wax after it's been cleaned. Wipe all the wax off once its dried and the powder coat should look like new again! Use a car wax brand that contains a UV blocker

or UV inhibitors. Do not use compound-type waxes as they contain abrasives that can harm the powder coating.

It's important in coastal areas to regularly clean any powder coated surfaces as salt will stick to the coating, dulling its appearance. This can leave your powder coated surface looking chalky.

We don't recommend paint touch ups to cover imperfections as paint won't adhere to powder coated surfaces. A local professional can quote to repair the powder coating.

How do I maintain my Powerfold mirrors?

Under normal Powerfold operation, there shouldn't be any maintenance required. However, if it is regularly used off-road, then the mirrors may need to be maintained every 12 months. This maintenance involves pulling the mirror into the fully extended position and applying dry lubricant on the arms.

Maintaining your Chrome Mirrors

The chrome finish used on our mirror heads is a chrome plated plastic, which provides the appearance and feel of real chrome, in a more lightweight and cost-effective material. Weather conditions, how often they are washed and how close to the ocean you live, all play a role in the longevity of the chrome finish.

- Automatic car washes that use bristle brushes or acidic preparations can damage your chrome
- Salt and de-icers will surface pit chrome and extra care will be required with more frequent washes to remove residue.
- We recommend washing them weekly with mild soap and water, steering clear of ammonia-based or acid solutions.
- Clean, good quality micro-fiber cloths are recommended to wipe down the chrome surface and prevent water stains from forming
- An occasional polish with a non-abrasive chrome polish will help bring your chrome back to its original shine!

If chrome isn't properly maintained, it can develop pitting from corrosion or lose its attractive shine. We recommend Autosol Metal Polish and Autosol Metal Life Saver

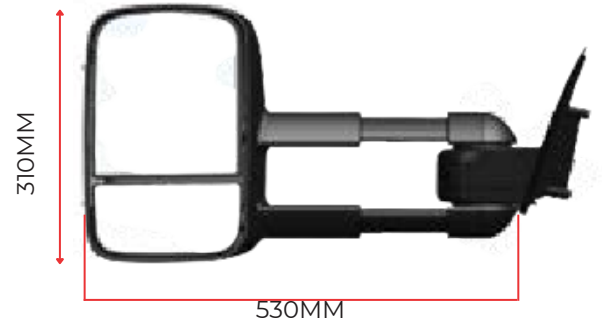
Mirror Dimensions

Clearview Original

Non-Extended Standard Driving Position



Fully Extended Towing Position

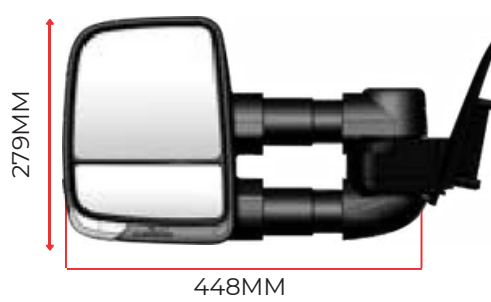


Clearview Next Gen

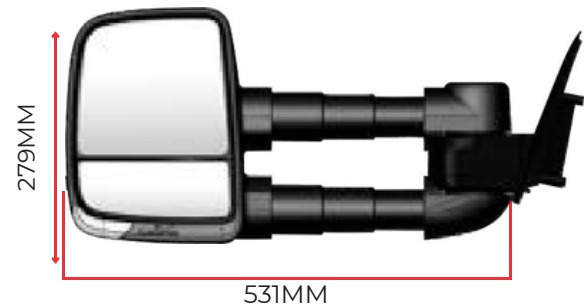
Non-Extended Standard Driving Position



Extended Towing Position



Fully Extended Towing Position



Clearview Compact

Non-Extended Standard Driving Position



Extended Towing Position



Fully Extended Towing Position



Fitting Instruction

Step 1

Prepare vehicle:

- Place transmission into park position with handbrake on.
- Turn ignition on and lower front door glass/windows.
- Turn ignition off.



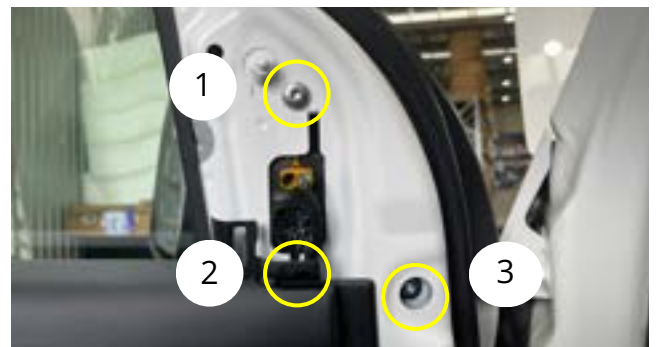
- Ford recommends that you disconnect the battery (disconnect the earth) prior to removing and disconnecting the side mounted mirrors. Refer to Ford Workshop Manual!

Step 2

Remove Corner Door Trim:



- Using Plastic Soft Lever Tool, insert, lever and remove the trim located in the lower front corner of the door window glass.
- Ensure that you retain the 3 retaining clips on the trim.



- This provides partial access to the mirror wiring plugs and to 2 of the 3 mirror attaching screws.
- Remove small plastic grommet to gain access to 3rd mirror attaching screw.

Step 3

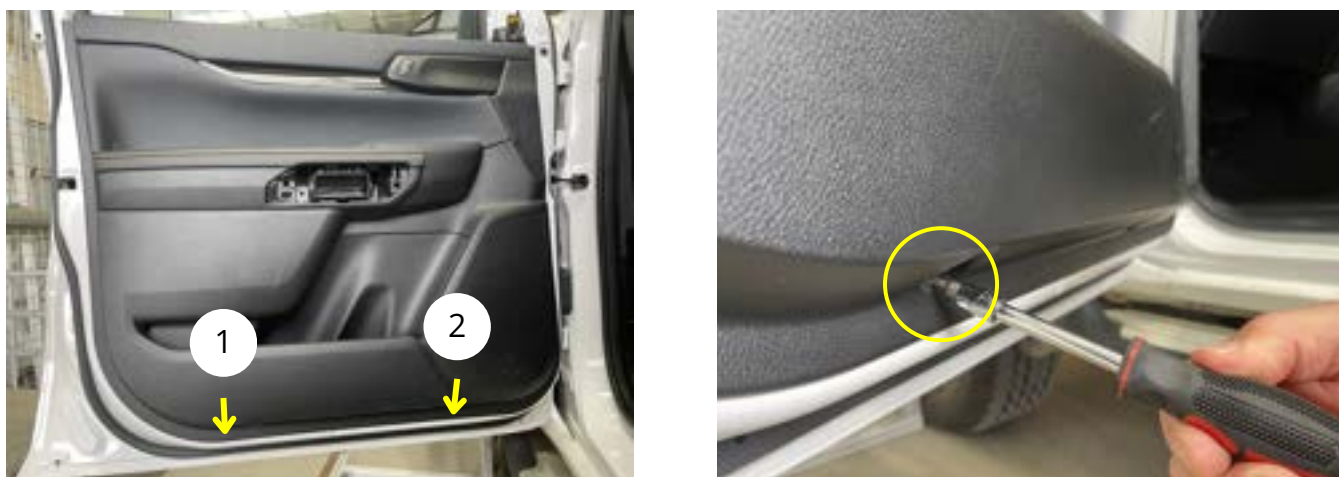
Remove Door Handle Trim:



- Using Plastic Soft Lever Tool, insert, lever and remove the small trim cover behind and around the door handle.
- Ensure you retain the retaining clips on the trim.
- This will reveal 2 Torx 20 head screws.
- Using the Torx 20 Key with the extension, remove these 2 screws.
- Retain screws for reattaching Door Trim.

Step 4

Remove Door Trim Screws:



- Locate the 2 Torx 20 head screws at the bottom edge of the door trim. Using the Torx 20 Key, remove these 2 screws.
- Retain screws for later reattachment of Door Trim.

Step 5

Remove the Door Trim:



- Insert Plastic Soft Lever Tool at the bottom centre cavity of Door Trim.
- Lever Door Trim outward to disconnect from the retaining clips.
- Using your hands continue to pull the Door Trim outward until all retaining clips have disconnected.
- Now lift the Door Trim upward and position onto 'S' Hook, to support Door Trim during installation.

Note that the Door Trim must remain electrically connected to the vehicle door.

Step 6

Disconnect Mirror Wiring Plugs:



Note: Pictures Show model with 360° Camera plug fitted

- You now have access to the mirror electrical connection wiring plugs which you will disconnect.
- Disconnect the single Black Multi Pin Plug, using small flat blade screwdriver to release retaining tabs.

Step 7

Disconnect Mirror from Vehicle:



- Remove the 3 Torx 30 Head, Mirror Head Mounting Screws.
- Support the mirror during this operation.
- Retain these screws for securing of Clearview Towing Mirror.

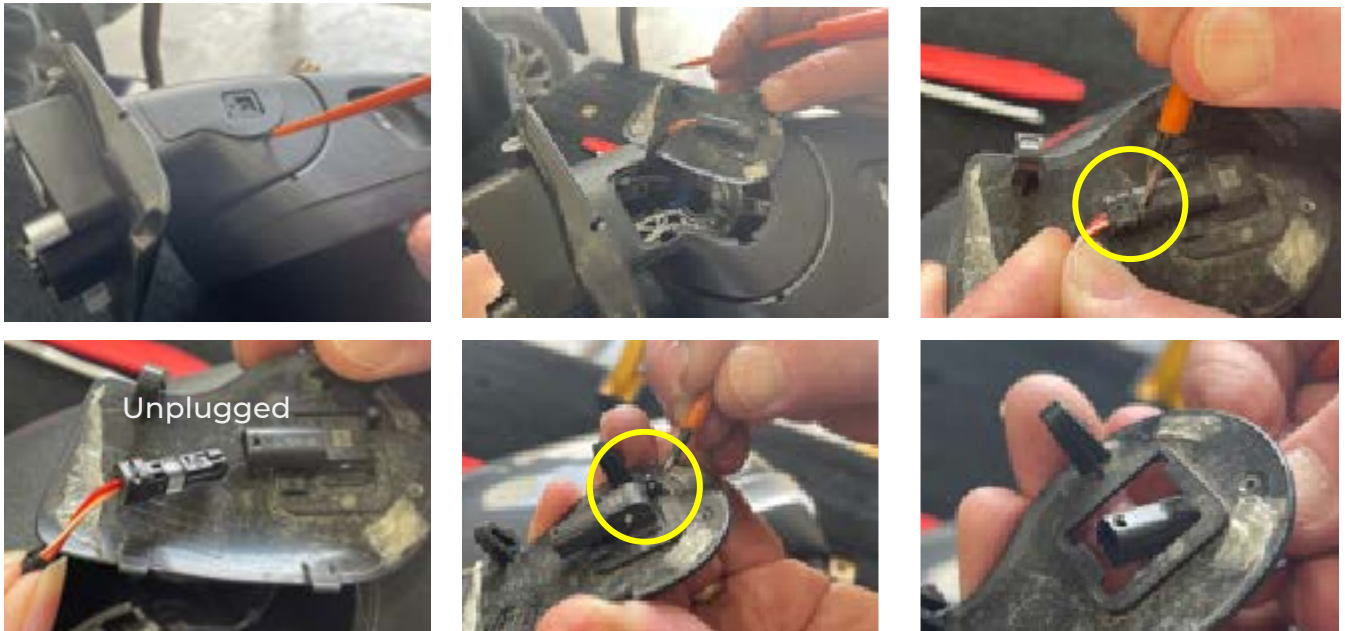
- Remove the mirror from the doors, by tilting the mirror upward to clear the hook at the top corner of the mirror base.



HANDY TIP: Keep your original OEM mirrors as back up should something happen to one of your Clearview Mirrors, necessitating the need to return it to us for repairs.

Step 8

Remove OAT Sensor from original Ford Mirror LHS only:



(OAT) Sensor



- Remove the Outside Ambient Temperature (OAT) Sensor Panel from the LH Mirror, as per Ford Workshop Manual.
 - Unplug the wiring plug from the OAT Sensor using a small screwdriver to release retaining tabs.
- Remove the OAT Sensor from panel by releasing single small retaining clip.
Note: Small retaining clip is very fragile, so be careful when removing.

Retain sensor for later fitment to the LH Towing Mirror.

You are now ready to fit your new Clearview Towing Mirror

Step 9

Remove the Towing Mirror etc. from the shipping box:

- Remove complete Mirror Heads from box.
- Remove the LHS Lower Access Panel from the shipping box.
- This Lower Access Panel is for the later fitment of the Outside Ambient Temperature (OAT) Sensor.
- Ensure that the rubber gasket is securely located onto the Towing Mirror Base.



Step 10

Note:

For ease of handling the Towing Mirror during installation, extend the Mirror Head to the Mid Position.

Step 11

Attach the Towing Mirror to the Vehicle:



- Present the Towing Mirror Head Base to the Door Panel mounting position.
- Tilt the mirror head upward and position the hook at the top corner of the mirror base into and under the door mounting panel.
- Now tilt the mirror head down and push forward until the mirror base is completely inserted into the opening in the door mounting panel.
- Ensure that the 3 mounting holes are aligned to the 3 openings in the mounting door panel.
- Hand-start the 3 Torx 30 Head Screws, to avoid cross threading of the screws.
- Fully tighten all 3 Torx 30 Head Screws to secure the Towing Mirror Head to the vehicle door. Tighten to torque of 11Nm.

Step 12

Electrical Wiring Connections from Vehicle to Towing Mirror:

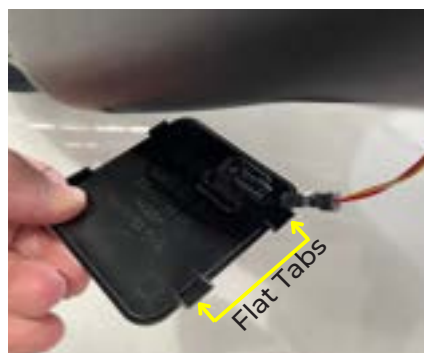


- Connect the Black Multi Pin Male Plug from the vehicle door wiring to the Towing Mirror Female Plug.

Step 13

Install & Connect OAT Sensor to Mirror Head (LH Mirror Only):

- Locate the LWR Access Panel removed from the shipping box in step 9.
- Locate the OAT Sensor removed from the OEM Mirror in Step 8.
- Fit OAT Sensor into the opening in the Lower Access Panel as shown.
- Push fully into position until clip engages.
- Locate OAT Sensor wiring & plug inside opening in base of Mirror.
- Connect OAT Sensor male plug into OAT Sensor female plug.
- Locate Lower Access Panel, with OAT Sensor attached into opening in base of Towing Mirror, as shown.
- Firmly push other end of Lower Access Panel upward, until locating clips engage.



Step 14 Check Mirror Functions:

- Before re-assembling the Door Trim, check all the Towing Mirror electrical functions.
- Turn ignition on and operate the mirror function as applicable, in your Towing Mirror:
 - Electric Mirror glass movement
 - Power Fold of Mirror Head
 - Mirror Head Turn Signals
 - Mirror Head Courtesy Lights
 - Blind Spot Monitoring
 - Mirror Glass Heaters and
 - OAT Sensor.

Step 15 Reassemble the Door Trim:

- Lift the Door Trim off the 'S' Hook and position onto the door.
- Tap around the edges of the Door Trim to secure the Door Trim into the retaining Clips.



Step 16

Secure Door Trim:

- Using the Torx 20 Key, secure the same 4 Torx 20 Head Screws removed in Steps 3&4.
- Ensure that the screws are returned into the same position from where they were removed.



Step 17

Replace the Small Door Trims:



- Corner Door Trim (Step 2) and
- Door Handle Trim (Step 3)
- Push each of these trims into position and ensure they are secure, using your hands.

Congratulations! You have now fully installed your new Clearview Towing Mirrors and are ready for your next adventure!

Can I install Clearview mirrors myself? Can I retrofit the original mirror base to Yes! Depending on the complexity of the the Next Gen or Compact mirrors? installation, Clearview mirrors are No. The cost of converting the mirrors to extremely easy to install and mount to the suit the new models is not worth it. We vehicle's original OEM mirror mounts. recommend either selling your Original Depending on the vehicle's current mirror mirrors privately or through the "Pre- options, Clearview mirrors include plug Loved" section (Within the "Shop" menu and play wiring looms. Instructional videos category) of our website and purchasing are also available on our website the new Next Gen or Compact mirrors (clearviewaccessories.com.au) in the "HOW brand new.

TO" section. Clearview recommends that any installation requiring hard wiring be

done by a licensed auto electrician. **Can I add an indicator later if I didn't order the mirrors with an indicator?**

What is the fitting time? Yes, you can. But it comes at a greater Depending on the complexity of the expense than if you were to order the installation, a dealer should be able to mirror with indicators. Installation to the install the mirrors in approximately 15 mirror head will require longer time and minutes per side of the vehicle. Installation more parts to dismantle.

requiring special fitting and/or hard wiring

will require longer fitting times (eg: **Are spare parts available?**

Camera and electric wiring kits). Note: The Yes. We have a list of spare parts for all our 70 Series mirrors with electric are more mirrors on our website. Our dealers also complex and will take more time than a have a list of all our spare parts.. If you 'normal' vehicle fitting. Please contact cannot find the parts that you require, Clearview mirrors if you have any questions please contact us or any of our dealers to about fitting or wiring. assist you with your inquiry

Are the telescopic arms electric?

No. The telescopic arms are extended manually. Clearview Mirrors will only fold against the vehicle electronically provided we make that model in Power Fold.

How do I maintain my mirrors?

We recommend using WD-40 Dry Lubricate.

How do I maintain my Powerfold mirrors?

Under normal Powerfold operation, there shouldn't be any maintenance required. However, if it is regularly used off-road, then the mirrors may need to be maintained every 12 months. This maintenance involves pulling the mirror into the fully extended position and applying dry lubricant on the arms.

I have just installed my new Powerfold mirrors and the mirror heads appear to be loose/floppy?

After the mirrors are installed, they need to be cycled a few times. This will allow all the internal mechanisms to set and find the proper positions. If the mirror head is still loose/floppy after they're cycled, please contact Clearview Technical Support.

I have installed my Powerfold Mirrors and have noticed that the Passenger's side mirror is closer to the vehicle compared to the Driver's side; Is this normal?

This is completely normal. In most vehicles, the mirror housings are angled differently between the driver and passenger side. This is because when you sit in the car, you are off centre, so generally the passenger side mirrors are closer to the vehicle body to allow you to have the same field of vision in the mirror.

One of my Powerfold Mirrors folds/opens quicker than the other one; Is this normal?

Generally, the passenger mirror will fold/open quicker, as it is closer to the vehicle body and therefore travels a shorter distance compared to the driver's side mirror. See previous question in regards to why the mirrors are angled differently.

My mirrors have been knocked out of Driving Position; how do I fix it?

Press the powerfold switch once. This should initiate the powerfolding motors and the mirrors should start folding inwards. Wait until the mirrors are fully folded in and have stopped moving, then press the powerfold switch again. This should now bring your mirrors back out to normal driving position. Check and see if the mirrors are locked into position firmly. If the mirror is not returning to the normal position, please contact Clearview Technical Support.

***Note:** The Powerfold mirrors can fold manually, however the manual fold mechanism is only designed as a safety feature. Through the lifespan of the product, manual folding will occur, such as people walking into them or accidentally bumping them. The internal mechanisms are designed to withstand this accidental manual folding during normal usage. It is not recommended for the mirrors to be manually folded constantly, as it will prematurely wear out the internal folding mechanisms and reduce the lifespan of the product.*

My mirror was knocked out of driving position. When I cycled them, there is a clicking sound and the mirror appears to have "jumped"; Are my mirrors damaged?

When the Powerfold mirror is being cycled to find its original driving position, it will "jump" back into position and make an audible click sound when mechanisms realign. Once the mirrors have found the original position and have been cycled, check for looseness and mirror movement. If they feel firm, then the mirrors have not been damaged. If they still feel loose, please contact Clearview Technical Support.

Why don't my mirrors fold all the way in/out when I press the switch?

The circuit breaker inside the mirror activates when the electrical current increases due to resistance. If the mirror stops before it reaches the folded in/out position, that means something is adding resistance while the mirrors are folding, hence activating the circuit breaker before it has reached the desired position. Please contact Clearview Technical Support.