

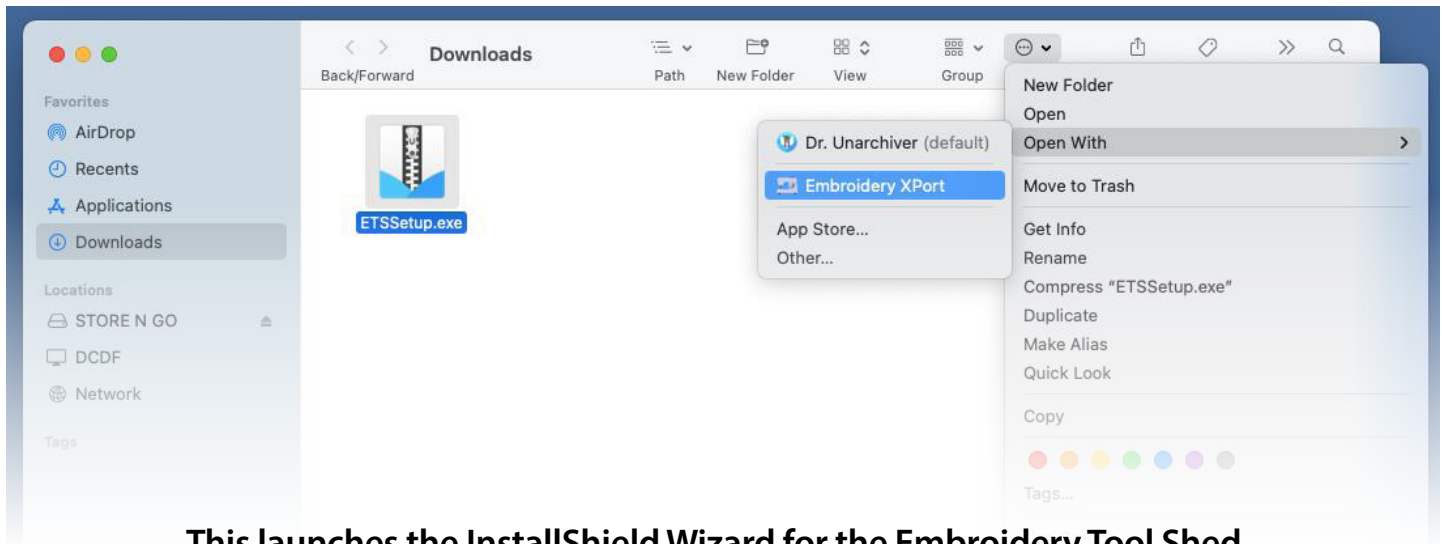


INSTALLING THE EMBROIDERY TOOL SHED ON YOUR MACINTOSH COMPUTER

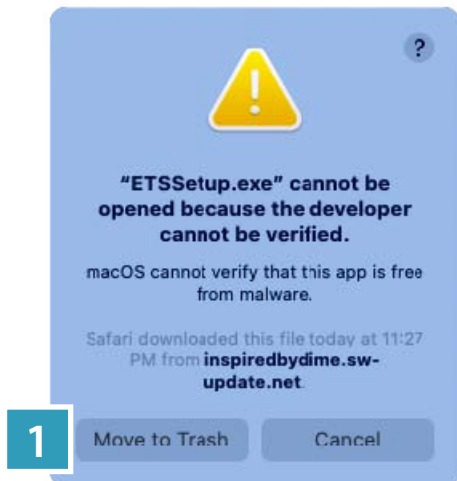
After installing the dimeTRANSLATOR, download the Embroidery Tool Shed (ETS) from the Inspiration Software Download Center webpage at the link below.

<https://www.inspiredbydime.com/inspiration-software-download-center/>

When the download is complete, go to the DOWNLOADS folder on your computer. Click once on the ETSSetup.exe to select it - it should appear highlighted. Click ACTIONS from the top menu bar, then OPEN WITH from the drop-down menu. Choose EMBROIDERY XPORT.



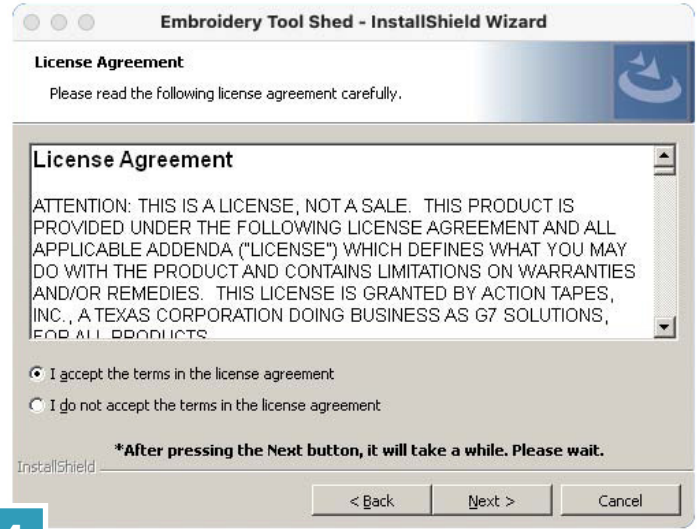
This launches the InstallShield Wizard for the Embroidery Tool Shed.



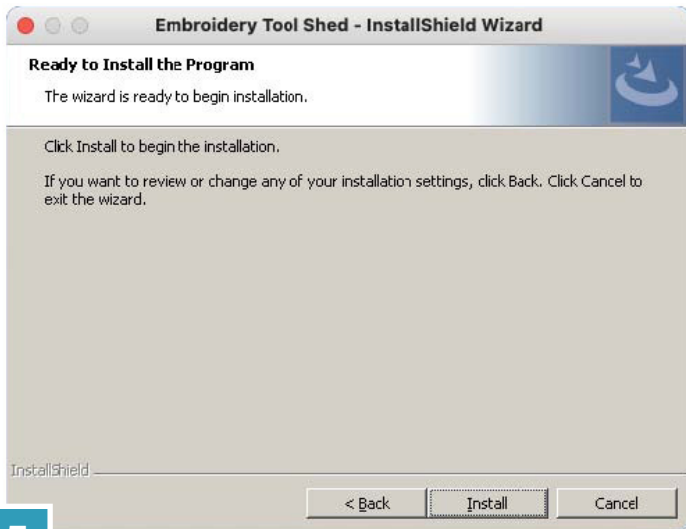
NOTE: A notification may pop up stating that the "Developer Cannot Be Verified" If this happens click on "Cancel" and after a few moments the InstallShield Wizard will launch.



3 Click Next.



4 Click "I accept..." and click "Next".

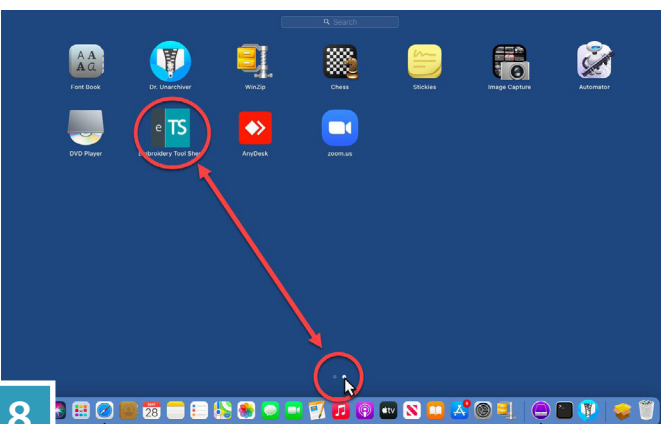
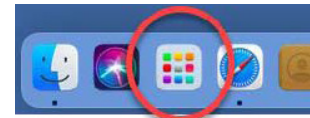


5 Click Install.



6 Click Finish.

7 When the installation is complete click the "Launch Pad" icon at the bottom of your screen to locate the Embroidery Tool Shed (ETS) icon.



8

Because the Launch Pad does not list apps alphabetically, check the last page by clicking on the far right dot at the lower center of your screen.

Locate the ETS icon. Double-click the icon to open your Embroidery Tool Shed software.

