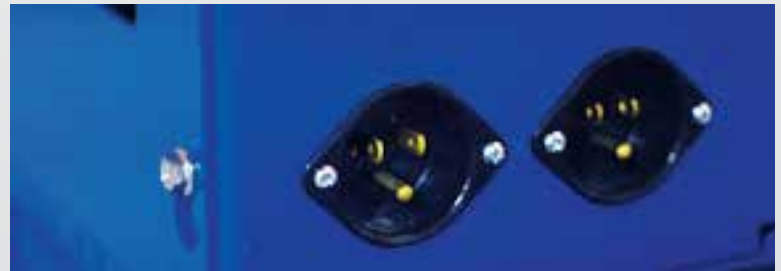


TERMINATOR INFINITY

RIDE ON FLOOR SCRAPER



THE BEST ALL DAY BATTERY
RIDE-ON FLOOR SCRAPER



TECHNICAL SPECS

Model	Terminator Infinity
Battery	48VDC - 400AH
Power	5.5 hp
Working Width	Up to 26" (66cm)
Travel Speed	Up to 150ft/min
Length	62" (157cm)
Width	27" (69cm)
Height	47" (119cm)
Weight	2,455 lb (1114kg)
Removable Weight	-
Machine Only	2,455 lb (1114kg)
Opt Weight Packages ¹	
Front	90 lb
Rear	150lb (68kg) ; 300lb (136kg)
Side	-

1. Extra Weight Pack must be purchased separately. 2 channel weights, 3 rear weights, rear weight holder, 2 front weights

FEATURES

- All Day Battery (8-12hrs run time)
- 110V Dual On-Board Charging system - 30% faster charge time (optional 220V available)
- Visible Charging Indicator
- AGM (Absorbed Glass Mat) Maintenance Free Battery Pack
- Safety Seat Switch
- Zero Emissions
- Hour meter and Battery level indicator
- Fully Enclosed Design: Protects Hydraulics and Major components
- Fits through any standard doorway
- Adjustable Wheel scraper blades
- Integrated fork lift channels
- Non - Marking Tires
- Common Quick Change Swivel Tooling Attachment Holder
- Optional Extra Weight Packages Available
- Parking brake

PERFORMANCE RATES

PRODUCTION RATES

Carpet: Up to 3000 sq. ft. / hour

VCT/VAT: Up to 3000 sq. ft. / hour

Sheet Vinyl: Up to 3000 sq. ft. / hour

Glue Down Hardwood: Up to 1800 sq. ft. / hour

Elastomeric Coatings: Up to 1800 sq. ft. / hour

Ceramic Tile: Up to 1200 sq. ft. / hour

All production rates are estimated average times, and are dependent on job conditions.



INFINITY



T3000EI



T2200PRO



T3000XME

TOOLING

The Terminator Ride on Floor Scraper has a variety of tooling options to help you remove most commercial & industry flooring quickly and easily. All of the tooling shown can be used on any Terminator Ride on Floor using standard tool holders that fit on all terminator models.

TYPES OF MATERIAL THAT CAN BE REMOVED

Our tools have been developed to remove a variety of materials with ease, while providing long life to reduce your tooling costs. By matching your removal project with the appropriate floor scraper tool you will be able to remove almost any covering mounted to your concrete sub-floor



TILE



CARPET



HARDWOOD



VCT | LINOLEUM |
RUBBER FLOORING



MORTAR |
OVERLAYMENTS



ADHESIVES

BLADE THICKNESS RANGE

Blades are designed in various thicknesses to provide various levels of flexibility and rigidity for removing a wide range of floor covering.

FLEX

Flex blades are used when you need more flexibility out of the blade so that it contours to the floor better. This is helpful when removing softer materials such as coatings or adhesives

STANDARD

Standard Blades are the most common thickness of blade as they are very versatile. If you are removing different types of flooring often, these are a great all around blade to use on a variety of materials.

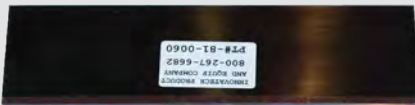
HEAVY

Heavy blades are generally used when increased durability and rigidity is desired. For example, when removing materials such as VCT and other tough soft materials, these blades will provide good blade strength for aggressive removal.

SUPER-DUTY

Super Duty Blades are used when extreme rigidity is required. They are the thickest blade offered for the Terminator Series, and provide maximum strength for aggressive removal.

NO NOTCHED BLADES



No Notched Blades are used to remove VCT, Linoleum, glue, and a variety of coatings and other soft materials. The No Notched design gives the blade more flexibility in the holder, helping you to remove softer materials such as glue, adhesives and other soft coatings as the blade will contour to the curves of the slab better.



FLEX

PART #	DESCRIPTION
81-0044	3" x 10" x .062"
81-0045	3" x 13" x .062"
81-0046	3" x 18" x .062"
81-0047	3" x 26" x .062"

STANDARD

PART #	DESCRIPTION
81-0051	4" x 9" x .074"
81-0057	4" x 13" x .074"
81-0063	4" x 18" x .074"
81-0069	4" x 26" x .074"

HEAVY

PART #	DESCRIPTION
81-0054	4" x 9" x .092"
81-0060	4" x 13" x .092"
81-0066	4" x 18" x .092"
81-0072	4" x 26" x .092"
81-0081	6" x 26" x .092"

SUPER-DUTY

PART #	DESCRIPTION
81-0082	4.5" x 10" x .125"
81-0084	4.5" x 13" x .125"
81-0086	4.5" x 26" x .125"

TOOLING

NOTCHED BLADES



Notch blades excel at the removal of materials such as VCT, Linoleum, glue, and a variety of coatings and other soft materials. Notch blades gives you more rigidity as you scrape, which make them ideal for mainly VCT and Linoleum removal.



STANDARD

PART #	DESCRIPTION
81-0052	4" x 9" x .074"
81-0058	4" x 13" x .074"
81-0064	4" x 18" x .074"
81-0070	4" x 26" x .074"

HEAVY

PART #	DESCRIPTION
81-0055	4" x 9" x .092"
81-0061	4" x 13" x .092"
81-0073	4" x 26" x .092"
81-0081	6" x 26" x .092"

SUPER-DUTY

PART #	DESCRIPTION
81-0083	4.5" x 10" x .125"
81-0085	4.5" x 13" x .125"
81-0087	4.5" x 26" x .125"

SELF DICING BLADES



STANDARD

PART #	DESCRIPTION
81-0053	4" x 9" x .074"
81-0059	4" x 13" x .074"
81-0071	4" x 26" x .074"

HEAVY

PART #	DESCRIPTION
81-0056	4" x 9" x .092"
81-0062	4" x 13" x .092"
81-0068	4" x 18" x .092"
81-0074	4" x 26" x .092"

When removing carpet, dicing blades help by cutting the carpet into strips as you remove the material. This avoids having to "dice" the carpet in advance of the removal and allows the operator to easily remove the carpet in one pass.

STANDARD TILE TOOTH



The Standard Tile Tooth is great for removing tile and other tough materials. The 2" wide blade increases the weight of machine on a smaller surface area providing a very aggressive removal.

PART #	DESCRIPTION
83-0002	STANDARD TILE TOOTH

MILLED TILE TOOTH



The Milled Tile tooth is used for removing materials such as Ceramic tile and other tough materials that require a lot of focused force. The tool is milled to increase the attack angle of the tool, helping remove material easier. The key difference between the Standard Tile Tooth and Milled tile tooth is the aggressiveness. Because the Milled tooth is thinner, it will get under materials easier.

PART #	DESCRIPTION
83-0001	MILLED TILE TOOTH

SABER CLAWS



The Saber Claw Carbide Tool comes in 2", 4" or 6" versions to accommodate the type of job that you are working on. These tools are used to remove materials such as Ceramic, quarry, stone tile, Wood flooring, Mortar & overlaysments.

PART #	DESCRIPTION
83-0014	2" SABER CLAW BIT
83-0015	4" SABER CLAW BIT
83-0016	6" SABER CLAW BIT

CHISEL BITS



Chisel bits are typically used for removing hardwood flooring and other difficult to remove material. 3 styles or chisel heads are available depending on the material being removed and the level of difficulty when removing.

PART #	DESCRIPTION
81-0356	DIGGING CHISEL
81-0361	3" WIDE CHISEL
81-0355	20" NARROW CHISEL

ACCESSORIES

T-2200PRO DOUBLE REAR WEIGHT PACKAGE (4 X 75LB REAR WEIGHT W/ HOLDER)

PART NUMBER # 71-0013



TERMINATOR INFINITY REAR WEIGHT PACKAGE (4 X 75LB REAR WEIGHT W/ HOLDER)

PART NUMBER # 71-0036

TERMINATOR INFINITY REAR WEIGHT PACKAGE (2 X 75LB REAR WEIGHT W/ HOLDER)

PART NUMBER # 71-0040

T-3000EI REAR WEIGHT PACKAGE (2 X 75LB REAR WEIGHT W/ HOLDER)

PART NUMBER # 71-0020



T-3000EI FRONT WEIGHT PACKAGE (2 X 30LBS)

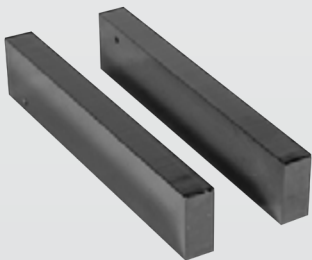
PART NUMBER # 71-0038

TERMINATOR INFINITY FRONT WEIGHT PACKAGE (3 X 30LB)

PART NUMBER # 71-0037

T2200PRO EXTRA FRONT WEIGHT PACKAGE (3X30LB)

PART NUMBER # 71-0039



CHANNEL WEIGHT PACKAGE - 168 LBS (T3000 EI, INFINITY, T2200 PRO, T3000 XME)

PART NUMBER # 71-0031



SIDE WEIGHT PACKAGE - 800LBS (T3000EI, T2200PRO)

PART NUMBER # 71-0012

ATTACHMENTS



TERMINATOR SWIVEL HEAD 26" JAW

PART NUMBER # 81-0024

* SHOWN WITH THE 26" STANDARD BLADE - PART NUMBER # 81-0070



TERMINATOR SWIVEL HEAD 13" JAW

PART NUMBER # 81-0027

* SHOWN WITH THE 13" STANDARD BLADE - PART NUMBER # 81-0058



SWIVEL HEAD CERAMIC TILE TOOTH HOLDER

PART NUMBER # 81-0031

* SHOWN WITH THE MILLED TILE TOOTH - PART NUMBER # 83-0001



SABER CLAW CARBIDE CARBIDE HOLDER (2" & 4")

PART NUMBER # 81-0333

* SHOWN WITH 2" SABER CLAW BIT - PART NUMBER # 83-0014



SABER CLAW CARBIDE CARBIDE HOLDER (6")

PART NUMBER # 81-0334

* SHOWN WITH 6" SABER CLAW BIT - PART NUMBER # 83-0016



HEX SHANK TOOL KIT

PART NUMBER # 81-0368



TERMINATOR SWIVEL HEAD TRAVEL DOLLY, 6" CASTER WHEELS

PART NUMBER # 81-0340

ACCESSORIES



**T2200PRO - 20#
PROPANE TANK**
PART NUMBER # 44-0046



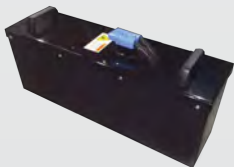
INCIDENTAL SPILL KIT
PART NUMBER # 81-0011



STAND-UP CARPET DICER
PART NUMBER # 70-0007



**T3000XME/T2100XME
BATTERY CART
COMPLETE ASSEMBLY**
PART NUMBER # 96-0269



**T3000XME / T2100XME
BATTERY PACK UNIT**
PART NUMBER # 71-0016



**T-3000EI 110V
PORTABLE CHARGER**
PART NUMBER # 81-0012



**T-3000EI 220V BATTERY
CHARGER - 50 AMP WET CELL**
PART NUMBER # 81-0100



**T-3000XME 110V
ONSITE BATTERY CHARGER**
PART NUMBER # 81-0349