



CLEMONS CONCRETE COATINGS

UV Stable

SUPER COLOR

Exterior & Interior Concrete Stain

Concentrated: Add 1 Bottle to 1 Gallon of Acetone

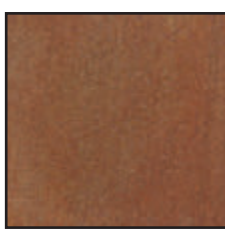
SUPER COLOR transforms plain concrete into attractive decorative concrete without the harsh chemicals, tedious process, and expense of acid staining. **SUPER COLOR** is a concentrated stain that dilutes in acetone. Beginning with a properly prepared surface, these stains can be applied and sealed in as little as one day, minimizing down-time. The semi-transparent properties allow the variations in the substrate to enhance the final look. Choose from 14 stock colors, a wider palette by blending stock colors, or faux finishing multiple colors to create your own unique effect.



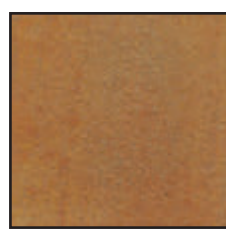
HICKORY



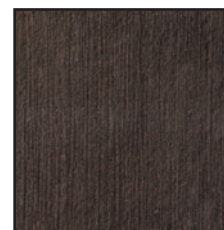
RED ROCK



PAINTED DESERT



CANYON



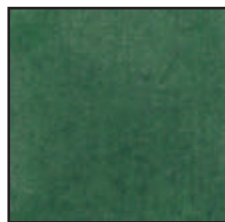
JAVA



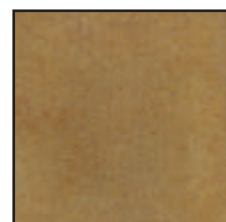
TUMBLEWEED



RIVIERA



CACTUS



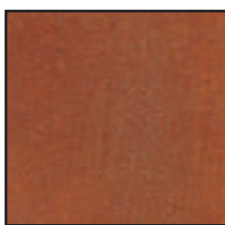
AMARILLO



GILDED



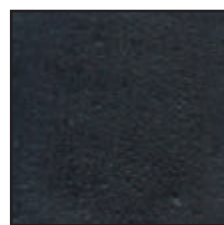
SMOKE



SALTILLO



FROST



MIDNIGHT

- ★ **Driveways** ★ **Sidewalks** ★ **Patios** ★ **All exterior concrete floors**
- ★ **Interior hard troweled floors** (must be opened by acid etching or mechanical means)

Color, Seal & Finish the Job in the same Day!

SUPER COLOR

TOOLS & MATERIALS REQUIRED

- ★ Acetone resistant pump-up sprayer with conical tip
- ★ Absorbent cloth or small container to catch drips
- ★ Painter's masking tape
- ★ Plastic sheeting
- ★ Synthetic-bristle brush (optional)
- ★ Acetone for dilution and clean up

SURFACE PREPARATION

The surface should be free of dirt and oil. Clean with Clemons ETCH & CLEAN to profile and clean the concrete surface. For extremely dirty surfaces, Clemons' DEGREASER NEUTRALIZER is recommended. Rinse with clean water. If possible Power Wash the surface at 3000 psi. Allow the surface to dry 24 hours before applying the stain. All walls, furniture, columns, or other items/areas that you do not want to color should be masked using painter's tape and plastic sheeting. This will protect the items from overspray. Always do a test spot in an inconspicuous area before proceeding.

STAIN PREPARATION

SUPER COLOR concentrate should be added to one gallon of acetone in sprayer. Use acetone to rinse color concentrate from bottle. Mix the two ingredients thoroughly.

APPLICATION

Apply with drip-less, acetone-resistant pump-up sprayer using a conical, fine-spray tip. Small areas can be brushed using a circular motion to avoid brush strokes. Take care to maintain a wet edge to avoid lines, and avoid puddling SUPER COLOR. Avoid drips. If not using a drip-less sprayer, tape a piece of cloth or a small container to the sprayer body to catch drips while not spraying the material. Place the tip of the spray wand on the cloth or into the small container immediately after releasing the spray handle. Apply the stain uniformly to obtain a more uniform final appearance. Apply in a random, circular motion with some overlapping to generate a more mottled look and more closely resemble acid stain. Colors may be blended to produce a large palette or applied over a base color for a unique look. Depending on the depth of color that is desired, coverage rates will vary.

SEALING

Seal as soon as concrete is dry to the touch. Spray apply the first coat of sealer to lock in color. SUPER COLOR can be sealed with most any sealer. SUPREME SEAL-25 is recommended for exterior applications. For interior applications, SUPER POLY, a 2-component system is very durable. SUPER SEAL-A COAT is a low odor water based alternative. Clean sealed floors with water only and use SUPER WAX on interior floors for added protection.

COVERAGE RATES

Approximately 200 square feet per gallon for smooth concrete, depending on depth of color desired. More material will be required for more porous surfaces or deeper coloration.

TECHNICAL DATA

VOC: <100 g/l
Flash Point: 0° to 114° depending on color

HMIS/NFPA

Health	1	Flammability	2
Reactivity	0	Protection	B

DISCLAIMER: Since manufacturer has no control over handling, use or storage; no guarantee expressed or implied, is offered. Clemons Concrete Coatings warrants the product to be free of defects and will replace or refund the purchase price of said products proven defective. Labor cost and/or other consequential damages are not covered by this warranty. Responsibility for claims of any kind is strictly limited to the purchase price of the product. The suitability of the product for any extended use shall be solely up to the user.

Made in U.S.A.

CLEMONS CONCRETE COATINGS

505 Cave Rd ★ Nashville TN 37210 ★ www.ccc-usa.com ★ Tel: 615-872-9099 ★ Fax: 615-872-9052