



# CLEMONS CONCRETE COATINGS

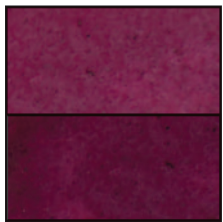
## SUPER DYE

### Decorative Color For Interior Concrete

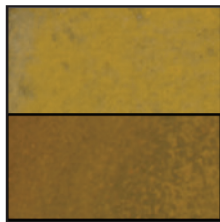
**SUPER DYE** is a penetrating dye that adds color to existing interior concrete. This coloring method provides an elegant decorative appearance without the harsh chemicals or tedious and expensive process of acid-based chemical staining.

Beginning with a properly prepared surface, **SUPER DYE** can be applied and sealed in as little as one day, minimizing down-time. Nano-particles allow the color to penetrate the concrete, resulting in a durable treatment that will not wear away with traffic.

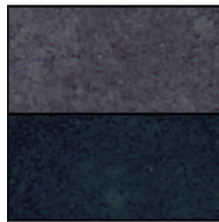
Densify with **SUPER HARD** when using **SUPER DYE** on polished concrete.



POMEGRANATE



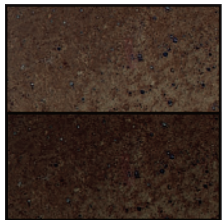
PINEAPPLE



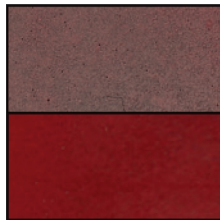
BLACK ORCHID



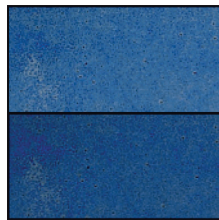
WARM HONEY



MALT BROWN



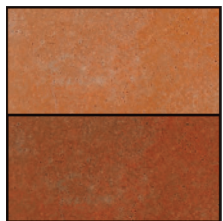
RED BERRY



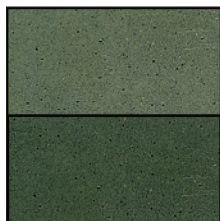
BLUE POPPY



RHUBARB



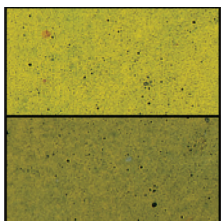
SWEET POTATO



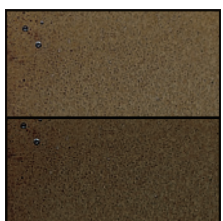
THISTLE GREEN



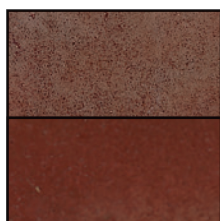
ROOT BEER



DANDELION



MAPLE SYRUP



ROAST PEPPER



COLA

TOP IS  
POLISHED

BOTTOM IS  
SEALED

- ★ Concentrated
- ★ Interior
- ★ Universal Dye
- ★ Mixes with Water
- ★ Mixes with Acetone
- ★ 15 Colors
- ★ No Mottling Agent
- ★ Fast Mixing
- ★ Dye and Seal Same Day

#### USES:

- ★ Interior Concrete
- ★ Polished Concrete
- ★ Overlays
- ★ Color Correct Acid Stain

For more information: [www.clemonsconcretecoatings.com](http://www.clemonsconcretecoatings.com)

# SUPER DYE

## TOOLS & MATERIALS REQUIRED

- ★ Pump-up sprayer with conical tip (acetone resistant sprayer if using acetone)
- ★ If not using drip-less sprayer, absorbent cloth or small container to catch drips
- ★ Painter's masking tape and plastic sheeting
- ★ Clean water for cleaning equipment

## WHEN SEALING

- ★ **ETCH & CLEAN**
- ★ **CLEANER DEGREASER NEUTRALIZER**
- ★ Synthetic bristle brush
- ★ **SUPER SEAL A-COAT** or **SUPREME SEAL**

## TEST BEFORE PROCEEDING

Test an inconspicuous area to be sure that concrete accepts stain and color meets expectation before proceeding. Test for water seep by taping plastic on one square foot of floor. Remove plastic the following day. If floor is wet, you should not stain and seal floor. If concrete is dusty, do not proceed until densified.

## SURFACE PREPARATION

All walls, furniture, columns, or other items/areas that you do not want to color should be masked using painter's tape and plastic sheeting. This will protect the items from over spray. Concrete should be at least 4 weeks old, free of dirt, dust, and oil. For polishing, profile with a coarse grit. For sealing, proceed as follows: Etch floor and clean with Clemons **ETCH & CLEAN** until concrete readily absorbs water and follow with **CLEMONS CLEANER DEGREASER NEUTRALIZER**. Dense concrete surfaces may require mechanical preparation to accept dye. Dusty concrete surfaces are not suitable for coating application. For oily, surfaces, Clemons **CLEANER DEGREASER NEUTRALIZER** is recommended. Power wash the surface at 3000 psi. If not possible, scrub with clean water and remove excess. Allow to dry 24 hours.

## DYE PREPARATION

**SUPER DYE** concentrate should be transferred into a 1-gallon sprayer. Use clean water or acetone to rinse the residue from the concentrate bottle into the 1-gallon container. Repeat this step until all **SUPER DYE** is out of the bottle. Add clean water or acetone to a final volume of 1 gallon. If diluted with acetone, floor can be sealed same day. If diluted with water, floor should be sealed when completely dry. To use larger capacity sprayers, adjust volumes.

## APPLICATION

Always apply a test spot in an inconspicuous area before proceeding with a project. Apply with a pump up sprayer using a conical, fine-spray tip. Small areas can be brushed using a circular motion to avoid brush strokes. Take care to maintain a wet edge to avoid bleed lines. Do not apply more material than the surface will absorb in 1 minute. If not using a drip-less sprayer, tape a piece of cloth or a small container to the sprayer body to catch drips when not spraying the material. Place the tip of the spray wand on the cloth or into the small container immediately after releasing the spray handle. Apply the dye uniformly to obtain a more uniform final appearance. Apply in a random, circular motion with some overlapping to generate a mottled look that more closely resembles acid stain. Colors should not be blended but you can apply one color over another to create a unique color. Depending on the depth of color that is desired, more than one application may be required. Use clean water or acetone to rinse the sprayer between color changes. Keep a container of clean water or acetone available and place the end of the sprayer wand into it between applications to keep the tip from becoming clogged.

## POLISHING

Grind surface to between 200 and 400 grit. Apply **SUPER DYE**. Densify with **SUPER HARD-L**. Polish to desired finish.

**SUPER DYE HOW TO VIDEO** please visit [www.ccc-usa.com](http://www.ccc-usa.com)

## COVERAGE RATE

Approximately 200-400 square feet per gallon, depending on porosity and depth of color desired.

## SEALING

The surface must be sealed with a clear concrete sealer to lock in and protect the color. If dye residue is present, remove with white buffing pad and tack cloth. Do not use water. A light initial coat of sealer should be applied to the surface with a pump sprayer to "lock in" the dye. Apply sealer per the manufacturer's instructions. If using water-based dyes, wait 4 hours to start sealing with a water-based sealer and 8 hours for a solvent based sealer. If using acetone based dye, you can seal immediately. Spray apply first coat of sealer. **CLEMONS SUPER SEAL A-Coat** can be used if floor is opened mechanically or prepared with **ETCH & CLEAN**. For ongoing maintenance, clean with water only and use Clemons **SUPER WAX POLISH** for ongoing scuff protection and maintenance. Apply 2-3 coats initially per label's instructions, and touch-up periodically as a regular maintenance routine.

## TECHNICAL DATA

VOC: <15 g/L  
Flash Point: 150° F  
DOT: Non-Regulated Material

## HMIS

Health	1	Flammability	2
Reactivity	0	Protection	B

**DISCLAIMER:** Since manufacturer has no control over handling, use or storage; no guarantee expressed or implied, is offered. The suitability of the product for use shall be solely up to the user. Manufacturer retains the right to venue.

Made in USA

**CLEMONS CONCRETE COATINGS**

505 Cave Road ★ Nashville TN 37210 ★ [www.ccc-usa.com](http://www.ccc-usa.com) ★ Tel: 615-872-9099 ★ Fax: 615-872-9052