

# TECHNICAL DATA SHEET



Rel. EN 2-00 - 21/01/22

## THT8

SMART IR CAMERA  
120X90PXL FOR CONNECTION  
TO MOBILE DEVICES

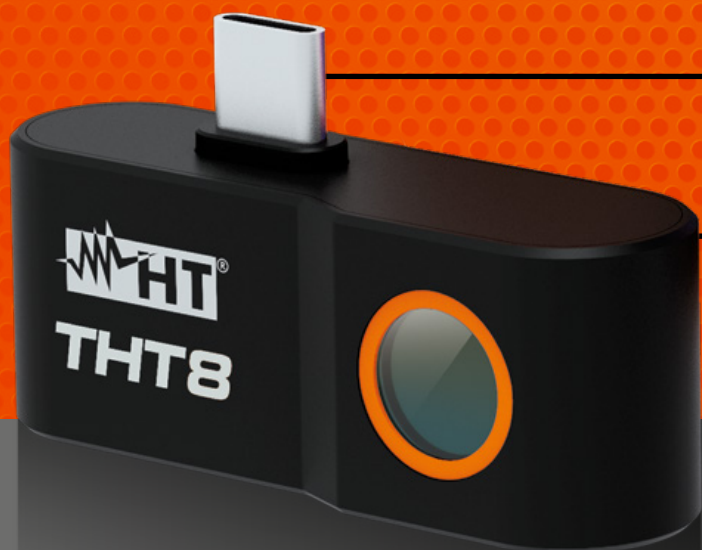
**120x90**  
PIXEL



TEMPERATURE  
RANGE  
-20°\400°



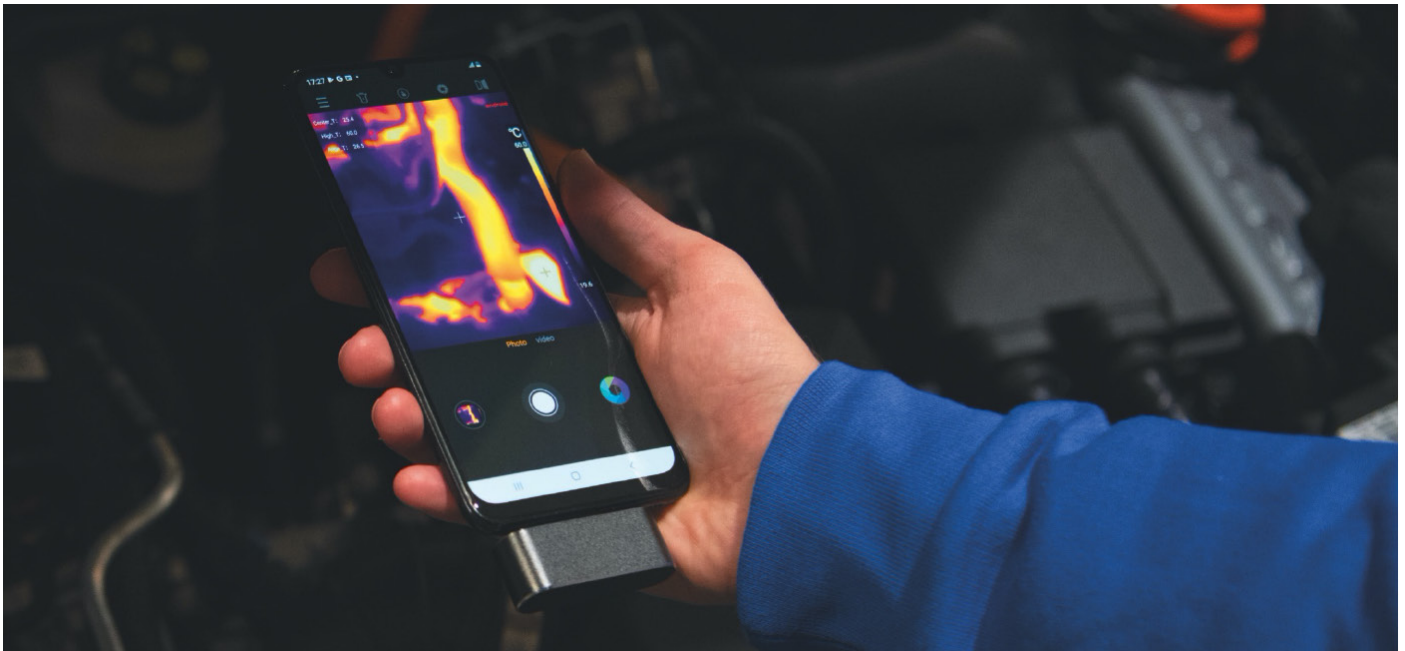
FUSION  
PiP





SMART IR CAMERA 120X90PXL  
FOR CONNECTION TO MOBILE DEVICES

TECHNICAL  
DATA SHEET



Connection of THT8 camera to a mobile device

**HTSmartCamera APP features**

- › Compliance with Android systems from version 5.1, Quad core A35, 2MB RAM
- › Connection to mobile devices with USB-C input
- › Saving snapshots of IR images and videos
- › Including of points, lines, areas on the IR image
- › Visualisation of Hot/Cold point temperature on the image
- › 9 color palettes selectable
- › Mobile device flashlight activation
- › Manual activation of internal camera calibration

**1. TECHNICAL SPECIFICATIONS**

Detector type	UFPA
Spectral range	8 ±14µm
Resolution / Pxl size	120 x 90pxl / 17µm
Thermal sensitivity/NETD	<0.05°C @ 30°C / 50mK
Field of View (FOV)	50° x 38°
Focal lens / F-number	2.3mm / 1.13
Minimum focal distance	0.5m
I FOV (@1m)	7.3mrad
Focusing	Automatic
Image frequency	25Hz
Color palettes	9 Standard
Format of saved files	PNG (snapshots), MP4 (IR videos)


**SMART IR CAMERA 120X90PXL  
FOR CONNECTION TO MOBILE DEVICES**
**TECHNICAL  
DATA SHEET**
**2. TEMPERATURE MEASUREMENT**

RANGE	RESOLUTION	ACCURACY (*)
-20.0°C ÷ 400.0°C	0.1°C	±3%rdg or ±3°C (higher value)
-4.0°F ÷ 752.0°F	0.1°F	±3%rdg or ±5.4°F (higher value)

(\*) Ambient temperature: 10°C ÷ 26°C, Object temperature: &gt;0°C

**3. TEMPERATURE MEASUREMENT SCREENING MODE**

RANGE	RESOLUTION	ACCURACY
32.0°C ÷ 42.0°C	0.1°C	±0.5°C
89.6°F ÷ 107.6°F	0.1°F	±0.9°F

**4. GENERAL SPECIFICATIONS**

Measurement cursors	1 fixed central
Advanced analysis	Spots, Lines, Areas, "Hot/Cold" points
Mobile device torch	Enabled by APP
Internal calibration	Automatic and manual from APP
Operating temperature	0°C ÷ 35°C (optmal 16°C ÷ 22°C)
Operating humidity	5%RH ÷ 95%RH
Storage temperature	-10°C ÷ 55°C
Storage humidity	5%RH ÷ 95%RH
Encapsulation	IP54 according with IEC529
Dimensions (L x W x H)	50 x 30 x 20mm
Weight	20g
Shock	25G, according with IEC60068-2-29
Vibrations / Drop test	2G, according with IEC60068-2-6 / 2m
Dimensions (L x W x H)	133 x 87 x 24mm
Weight(battery included)	200g

**5. EXTERNAL INTERFACE**

Interface to mobile device	USB-C for connection to mobile devices through HTSmartCamera APP (only for Android devices)
----------------------------	---

**6. POWER SUPPLY**

Power supply	from connected mobile devices
Power consumption	<150mW

This instrument complies with European Directive EMC 2014/35/EU and at requirements of European Directives 2011/65/EU (RoHS) and 2012/19/EU (WEEE)