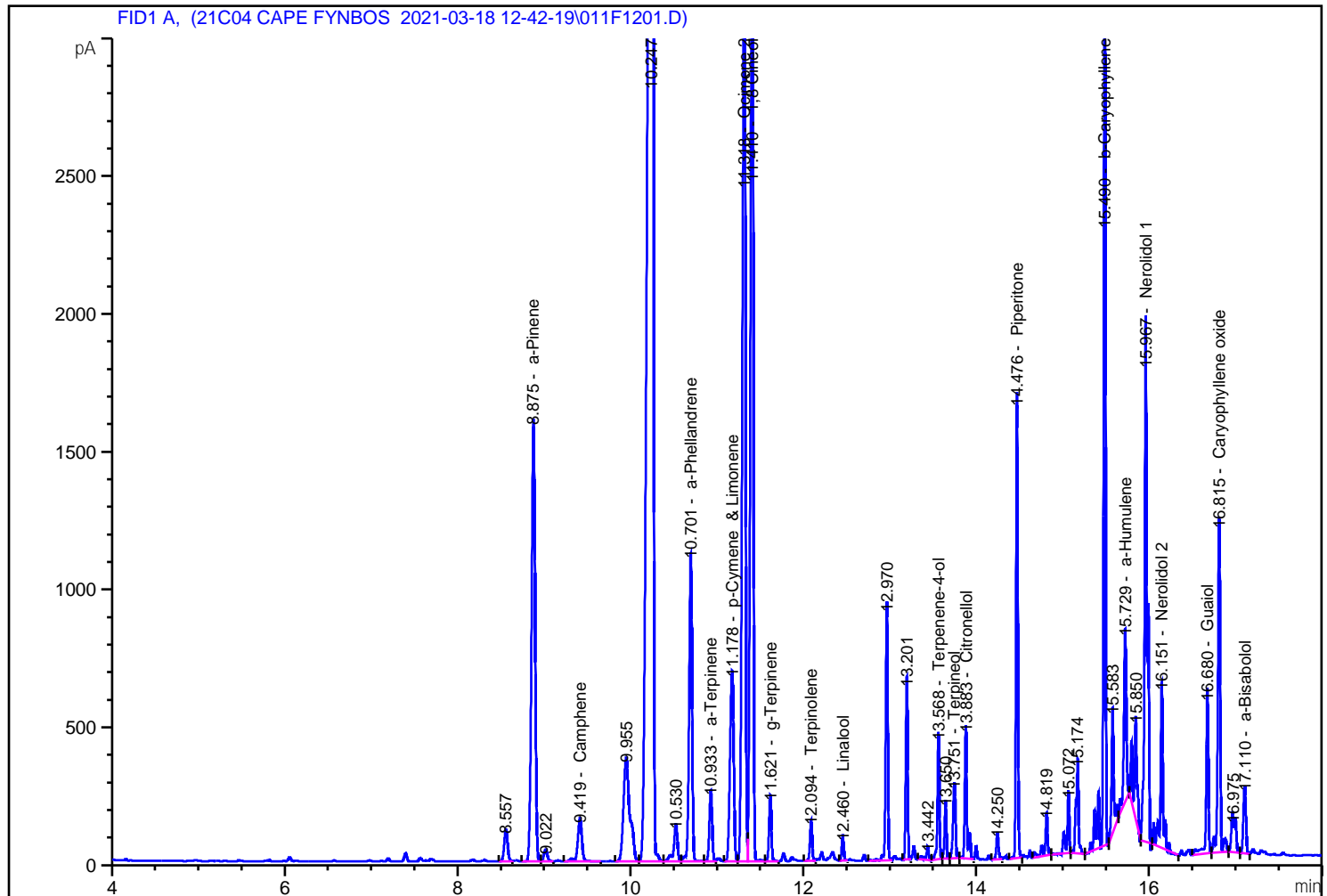


=====
Acq. Operator : Aldo Seq. Line : 12
Acq. Instrument : Instrument 1 Location : Vial 11
Injection Date : 3/18/2021 7:38:08 PM Inj : 1
Inj Volume : 1 µl
Acq. Method : C:\CHEM32\1\DATA\21C04 CAPE FYNBOS 2021-03-18 12-42-19\0001 TERPENES_30
MINUTES.M
Last changed : 3/12/2021 9:36:11 AM by Aldo
Analysis Method : C:\CHEM32\1\METHODS\0002 TERPENES_20 MINUTES.M
Last changed : 3/25/2021 9:56:23 AM by Aldo
Method Info : Terpenes method Runs 20 minutes



=====
Area Percent Report
=====

Sorted By : Signal
Calib. Data Modified : 3/25/2021 9:56:10 AM
Multiplier: : 1.0000
Dilution: : 1.0000
Use Multiplier & Dilution Factor with ISTDs

Sample Name: Helichrysum splendidum

Signal 1: FID1 A,

Peak #	RetTime [min]	Type	Width [min]	Area [pA*s]	Area %	Name
1	4.895		0.0000	0.00000	0.00000	Isovaleraldehyde
2	8.280		0.0000	0.00000	0.00000	Methyl propyl 2- methyl propionate
3	8.557	BV	0.0466	322.85461	0.37056	?
4	8.875	VV	0.0482	4681.68750	5.37348	a-Pinene
5	9.022	VV	0.0473	124.34155	0.14271	?
6	9.419	VB	0.0541	534.01691	0.61293	Camphene
7	9.955	VV	0.0755	1915.51819	2.19857	?
8	10.009		0.0000	0.00000	0.00000	b-Myrcene
9	10.194		0.0000	0.00000	0.00000	b-Pinene
10	10.247	VV	0.0594	2.75612e4	31.63377	?
11	10.530	VV	0.0476	410.82968	0.47154	?
12	10.701	VV	0.0404	2717.13867	3.11864	a-Phellandrene
13	10.792		0.0000	0.00000	0.00000	d-3-Carene
14	10.849		0.0000	0.00000	0.00000	Methyl butyl 2-methyl priopionate
15	10.933	VV	0.0389	585.28076	0.67177	a-Terpinene
16	11.023		0.0000	0.00000	0.00000	Ocimene 1
17	11.178	VV	0.0493	2076.58057	2.38343	p-Cymene & Limonene
18	11.318	VV	0.0413	8613.33691	9.88609	Ocimene 2
19	11.410	VV	0.0359	8903.96289	10.21966	1,8 Cineol
20	11.621	VV	0.0320	449.62128	0.51606	g-Terpinene
21	12.069		0.0000	0.00000	0.00000	Dihydromercinol
22	12.094	BB	0.0307	259.39630	0.29773	Terpinolene
23	12.379		0.0000	0.00000	0.00000	Nonane-2-one
24	12.460	BB	0.0273	146.83488	0.16853	Linalool
25	12.970	BB	0.0298	1560.07788	1.79060	?
26	13.201	BB	0.0280	994.30353	1.14123	?
27	13.277		0.0000	0.00000	0.00000	Isopulegol
28	13.442	BB	0.0353	107.70216	0.12362	?
29	13.568	BB	0.0289	721.27020	0.82785	Terpenene-4-ol
30	13.650	BB	0.0280	319.57138	0.36679	?
31	13.751	BB	0.0338	548.78064	0.62987	Terpineol
32	13.883	BB	0.0317	878.30597	1.00809	Citronellol
33	14.042		0.0000	0.00000	0.00000	Linalyl acetate
34	14.177		0.0000	0.00000	0.00000	Geraniol
35	14.250	BB	0.0304	167.22375	0.19193	?
36	14.418		0.0000	0.00000	0.00000	Citral
37	14.476	BB	0.0271	2432.33691	2.79175	Piperitone
38	14.819	BB	0.0338	330.08035	0.37885	?
39	15.072	BB	0.0307	422.46173	0.48489	?
40	15.174	BB	0.0371	707.90149	0.81251	?
41	15.490	BB	0.0294	5628.18994	6.45984	b-Caryophyllene
42	15.583	BB	0.0309	795.90784	0.91352	?
43	15.729	BB	0.0337	1245.79175	1.42988	a-Humulene
44	15.850	BB	0.0409	1049.35876	1.20442	?
45	15.967	BB	0.0381	4176.84668	4.79404	Nerolidol 1
46	16.151	BB	0.0361	1313.80725	1.50794	Nerolidol 2
47	16.680	BB	0.0304	1092.45813	1.25389	Guaiol
48	16.815	BB	0.0331	2360.38037	2.70916	Caryophyllene oxide
49	16.975	BB	0.0553	470.88931	0.54047	?
50	17.110	BB	0.0340	499.57669	0.57340	a-Bisabolol
51	17.671		0.0000	0.00000	0.00000	Iso Tagetone

Sample Name: Helichrysum splendidum

Peak #	RetTime [min]	Type	Width [min]	Area [pA*s]	Area %	Name
Totals :				8.71258e4		

2 Warnings or Errors :

- Warning : Calibration warnings (see calibration table listing)
- Warning : Calibrated compound(s) not found

=====
*** End of Report ***