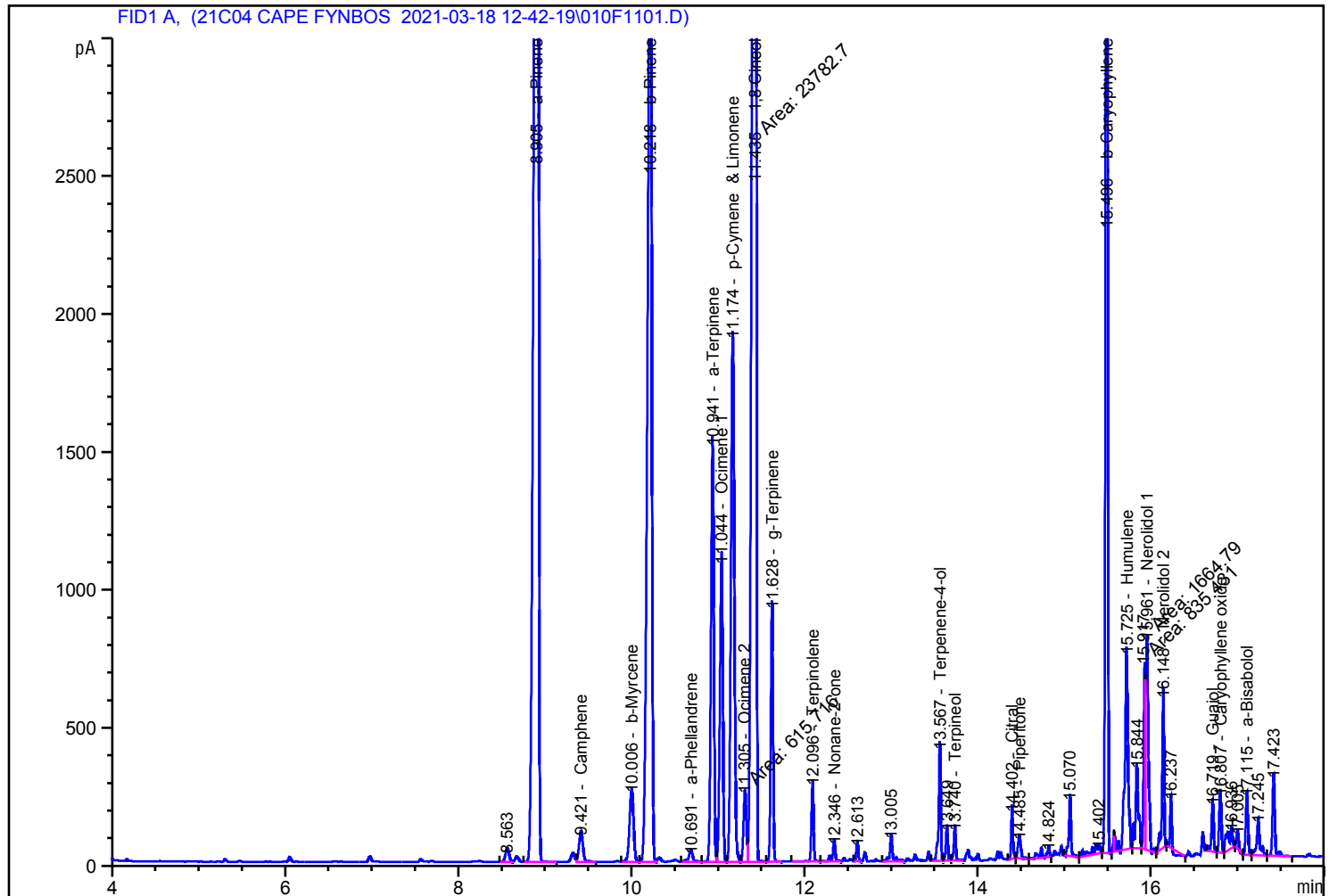


=====  
Acq. Operator : Aldo Seq. Line : 11  
Acq. Instrument : Instrument 1 Location : Vial 10  
Injection Date : 3/18/2021 7:00:36 PM Inj : 1  
Inj Volume : 1 µl  
Acq. Method : C:\CHEM32\1\DATA\21C04 CAPE FYNBOS 2021-03-18 12-42-19\0001 TERPENES\_30  
MINUTES.M  
Last changed : 3/12/2021 9:36:11 AM by Aldo  
Analysis Method : C:\CHEM32\1\METHODS\0002 TERPENES\_20 MINUTES.M  
Last changed : 3/25/2021 9:07:03 AM by Aldo  
(modified after loading)  
Method Info : Terpenes method Runs 20 minutes

Additional Info : Peak(s) manually integrated



=====  
Area Percent Report  
=====

Sorted By : Signal  
Calib. Data Modified : 3/25/2021 9:20:01 AM  
Multiplier: : 1.0000  
Dilution: : 1.0000  
Use Multiplier & Dilution Factor with ISTDs

Sample Name: Helichrysum odoratissimum

Signal 1: FID1 A,

Peak #	RetTime [min]	Type	Width [min]	Area [pA*s]	Area %	Name
1	4.895		0.0000	0.00000	0.00000	Isovaleraldehyde
2	8.280		0.0000	0.00000	0.00000	Methyl propyl 2- methyl propionate
3	8.563	VV	0.0492	149.48468	0.15698	?
4	8.905	VB	0.0561	2.24274e4	23.55197	a-Pinene
5	9.421	VV	0.0514	356.47272	0.37435	Camphene
6	10.006	VV	0.0541	873.76544	0.91758	b-Myrcene
7	10.218	VV	0.0532	1.20925e4	12.69885	b-Pinene
8	10.691	VV	0.0491	145.70253	0.15301	a-Phellandrene
9	10.792		0.0000	0.00000	0.00000	d-3-Carene
10	10.849		0.0000	0.00000	0.00000	Methyl butyl 2-methyl priopionate
11	10.941	VV	0.0390	3533.97656	3.71118	a-Terpinene
12	11.044	VV	0.0399	2616.05371	2.74723	Ocimene 1
13	11.174	VV	0.0443	5294.28760	5.55975	p-Cymene & Limonene
14	11.305	MF	0.0389	615.71631	0.64659	Ocimene 2
15	11.435	FM	0.0458	2.37827e4	24.97518	1,8 Cineol
16	11.628	VV	0.0320	1760.74841	1.84904	g-Terpinene
17	12.069		0.0000	0.00000	0.00000	Dihydromercinol
18	12.096	BB	0.0305	515.56012	0.54141	Terpinolene
19	12.346	BB	0.0349	179.97348	0.18900	Nonane-2-one
20	12.484		0.0000	0.00000	0.00000	Linalool
21	12.613	BB	0.0263	112.13560	0.11776	?
22	13.005	BB	0.0385	240.15102	0.25219	?
23	13.277		0.0000	0.00000	0.00000	Isopulegol
24	13.567	BB	0.0279	715.50232	0.75138	Terpenene-4-ol
25	13.649	BB	0.0285	196.55756	0.20641	?
26	13.740	BB	0.0274	204.07651	0.21431	Terpineol
27	13.928		0.0000	0.00000	0.00000	Citronellol
28	14.042		0.0000	0.00000	0.00000	linalyl acetate
29	14.177		0.0000	0.00000	0.00000	Geraniol
30	14.402	BB	0.0270	269.14761	0.28264	Citral
31	14.485	BB	0.0385	188.47716	0.19793	Piperitone
32	14.824	BB	0.0558	158.69202	0.16665	?
33	15.070	BB	0.0306	383.95419	0.40321	?
34	15.402	BB	0.0768	191.72154	0.20133	?
35	15.496	BB S	0.0282	9155.38379	9.61445	b-Caryophyllene
36	15.725	BB	0.0410	1922.65125	2.01906	Humulene
37	15.844	BB	0.0391	757.19458	0.79516	?
38	15.917	MF	0.0203	835.43127	0.87732	?
39	15.961	FM	0.0347	1664.79041	1.74827	Nerolidol 1
40	16.148	BB	0.0275	929.70679	0.97632	Nerolidol 2
41	16.237	BB	0.0205	171.78224	0.18040	?
42	16.719	BB	0.0306	328.96768	0.34546	Guaiol
43	16.807	BB	0.0316	412.59613	0.43328	Caryophyllene oxide
44	16.936	BB	0.0549	314.40756	0.33017	?
45	17.005	BB	0.0293	115.09254	0.12086	?
46	17.115	BB	0.0310	409.72510	0.43027	a-Bisabolol
47	17.245	BB	0.0404	346.20660	0.36357	?
48	17.423	BB	0.0330	585.11493	0.61445	?
49	17.671		0.0000	0.00000	0.00000	Iso Tagetone
50	21.307	BB	0.0606	271.41638	0.28503	?

Sample Name: Helichrysum odoratissimum

Totals : 9.52252e4

2 Warnings or Errors :

Warning : Calibration warnings (see calibration table listing)

Warning : Calibrated compound(s) not found

=====

\*\*\* End of Report \*\*\*