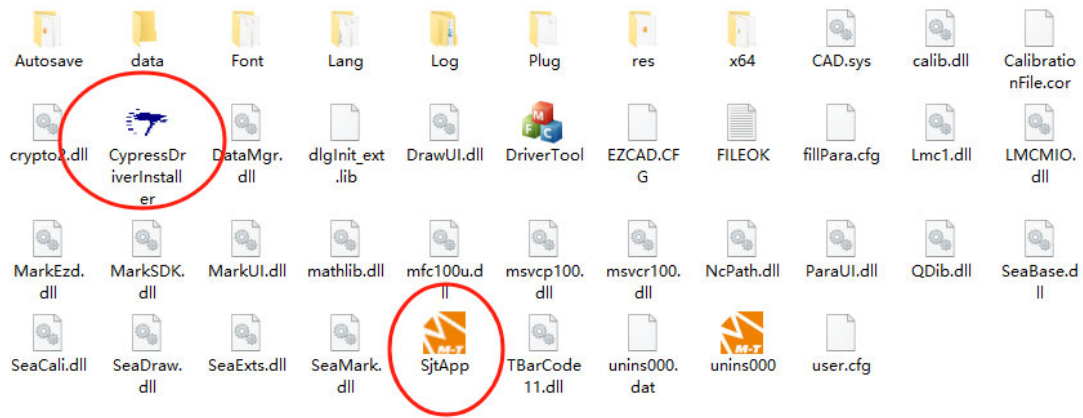


UV laser installation and setup instructions

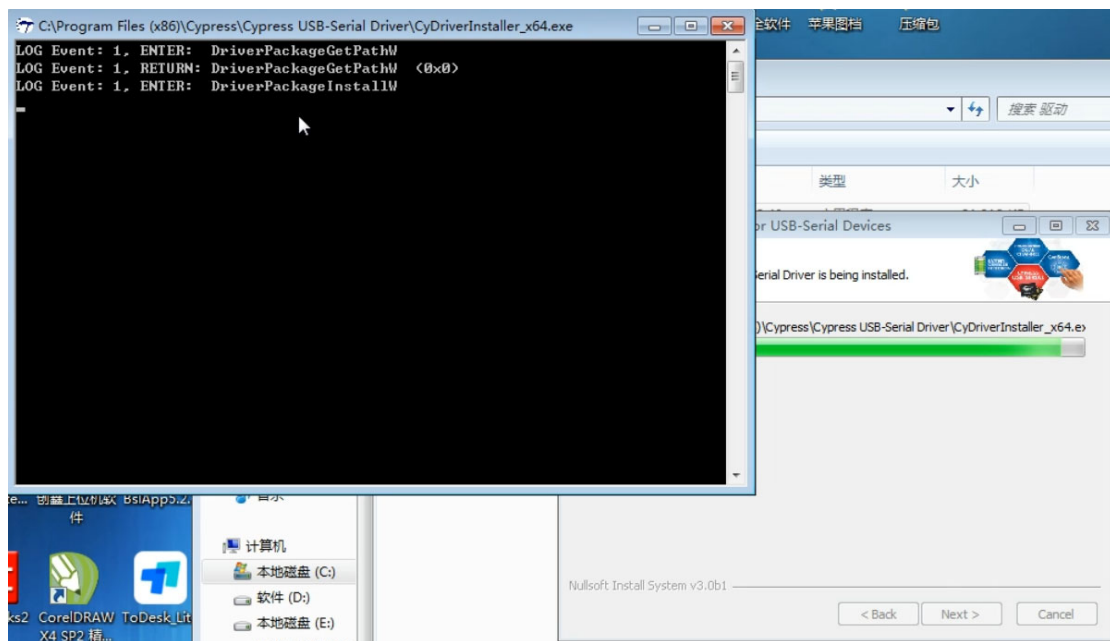
Index

UV laser installation and setup instructions	1
Install driver	2
Open the marking program	2
Change language	3
Laser config	4
Save calibration files	5
Laser control config	6
Port	7
Red light	8
Window View	9
Object properties	10
Marking control window	11
Custom text and graphic marking	12



Install driver

Double-click "**CypressDriverInstaller**" to install the driver

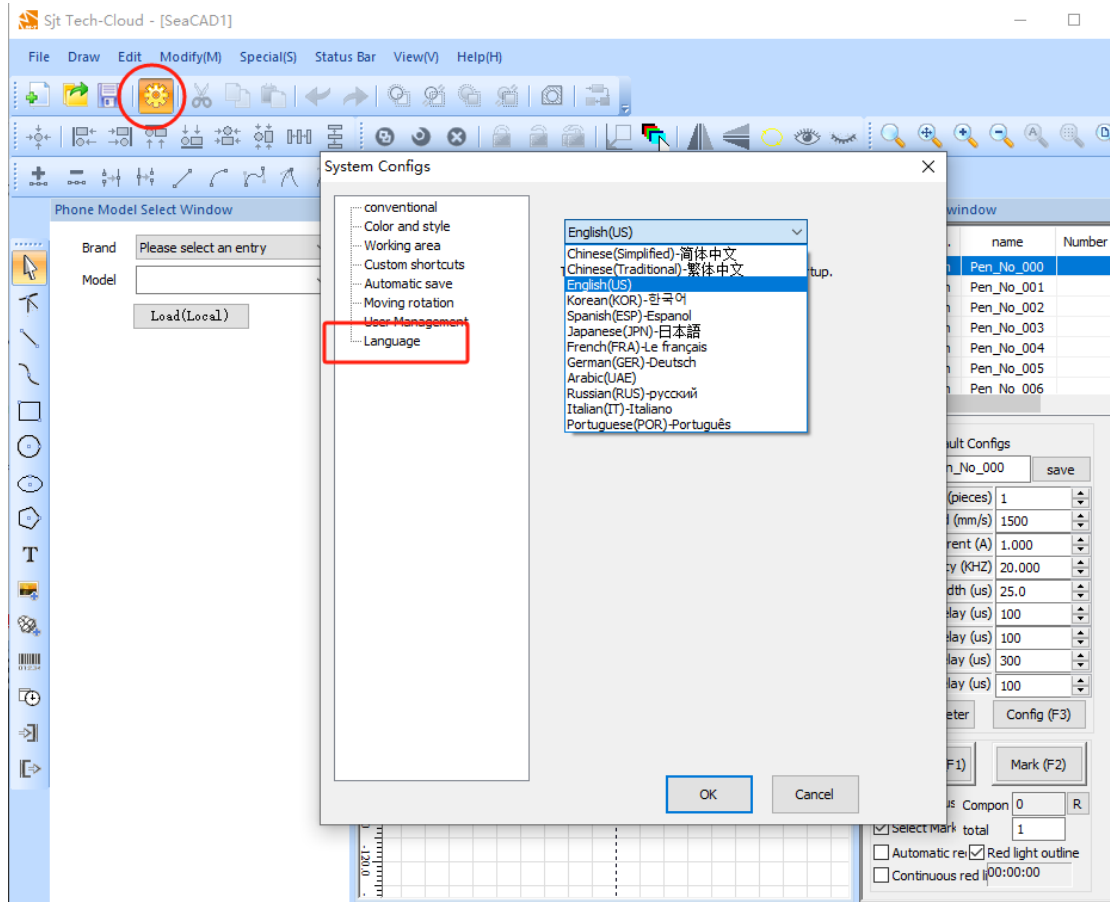


Open the marking program

Double-click "**SjtApp**" to enter the marking program. It is recommended to send the shortcut to the desktop.

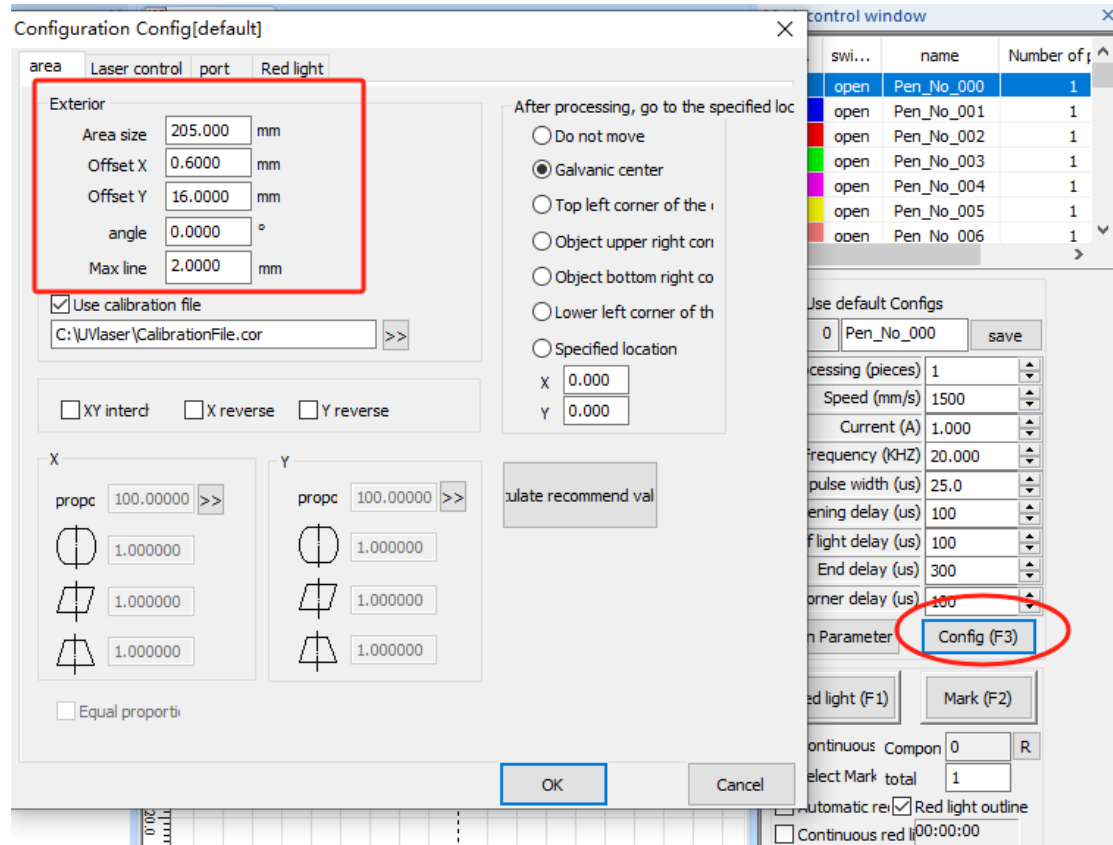
Change language

Click the **system config** icon on the menu bar to enter the change options



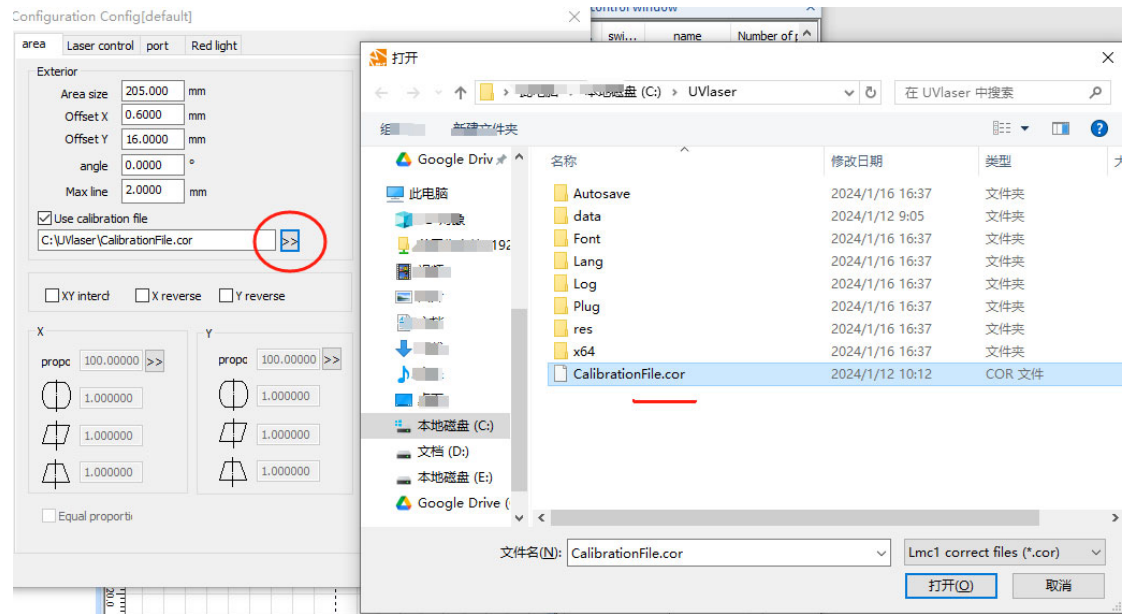
Laser config

Click the **“Config (F3)”** option in the lower right corner to enter laser settings



Save calibration files

Find the **.cor** file in the folder



Laser control config

Configuration Config[default] ✕

area Laser control port Red light

Laser type
 CO2 YAG Violet MOPA Fiber

PWM
 Enable PWM signal output
Max PWM signal KHz
Min PWM signal KHz

Power mapping

Enable pre-ionization
Pulse Width Micro:
Pulse frequency KHz

Enable CO2 first pulse suppression
First pulse suppression %
First pulse suppression %

switch
 Enable the first pulse suppress Micros
 Open Q switch when the first pulse
 Red Light Mode of Viol
 Pulse width rever

Fiber
Types
 Light leakage tre:
Turn on the MO ms

Enable pulse width setting
 Does not detect the laser fee

Q pulse width
Min Q pulse us
Max Q pulse us

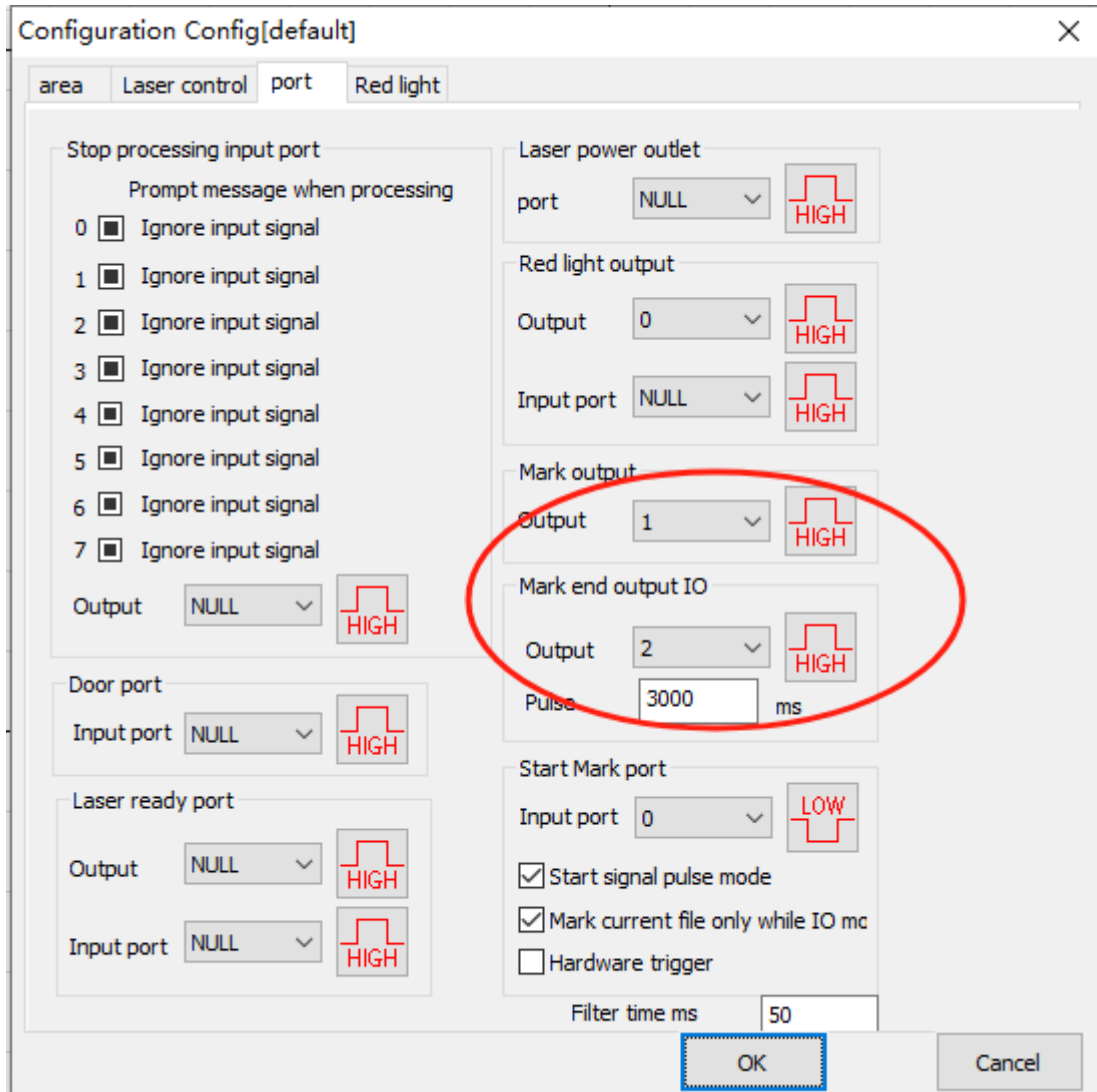
Analog output
 Enable current output

Current mapping Test laser

OK Cancel

Port

The port should be used for the foot switch, if the port is incorrect the foot switch will have no effect



Red light

Normally use the default parameters. If you want to modify the red light preview speed, just modify the math on the first line.

area Laser control port Red light

Red light style Graphic outline

Red light 3000 mm/s

Offset X 0.0000 mm

Offset Y 0.0000 mm

Size ratio X 1.0000

Size ratio Y 1.0000

Laser contains redlight Mode

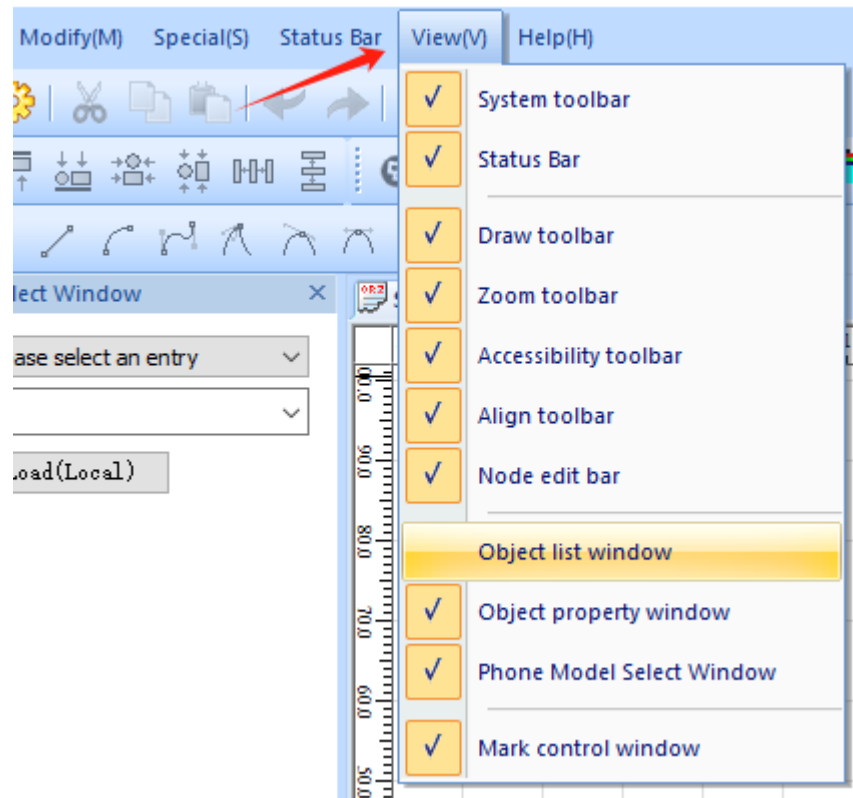
Red light preview

00:00:00.000

Window View

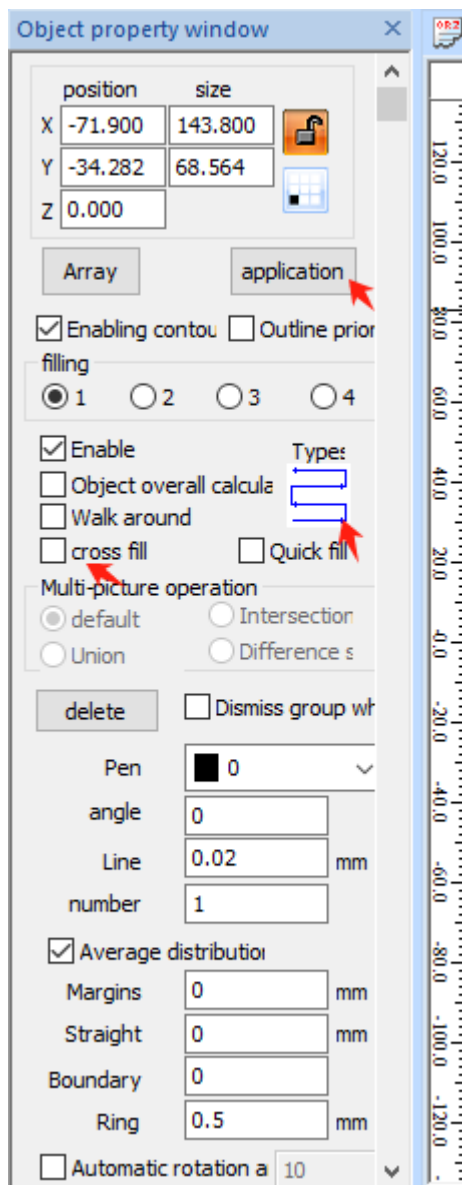
When you are missing a window control, you can find it in the View menu

SeaCAD1]



Object properties

- When the drawing is filled, all options will be activated
- In the case of default parameters, it is recommended to cancel “cross fill” to reduce repeated marking.
- After changing parameters, you must click “Application” for the new settings to take effect



Marking control window

- Speed: You can modify the range from 1 to 5000. The more numbers, the faster the speed.
- Frequency and Q pulse width:
- The maximum frequency is 1000, the maximum Q pulse width is 30
- $(Q \text{ pulse width}) \times (\text{Frequency}) < 1000$, otherwise it will display wrong
- Q pulse width 1 is the strongest power
- It is recommended that Q pulse width 27~29 be used for LCD frame separation
- Recommended Q pulse width 1 for separating back glass

Pe...	swi...	name	Number of p
0	open	Pen_No_000	1
1	open	Pen_No_001	1
2	open	Pen_No_002	1
3	open	Pen_No_003	1
4	open	Pen_No_004	1
5	open	Pen_No_005	1
6	open	Pen No 006	1

Use default Configs

0 Pen_No_000 save

processing (pieces) 1

Speed (mm/s) 1500

Current (A) 1.000

Frequency (KHZ) 20.000

Q pulse width (us) 25.0

Opening delay (us) 100

Off light delay (us) 100

End delay (us) 300

Corner delay (us) 100

Pen Parameter Config (F3)

Red light (F1) Mark (F2)

Continuous Compon 0 R

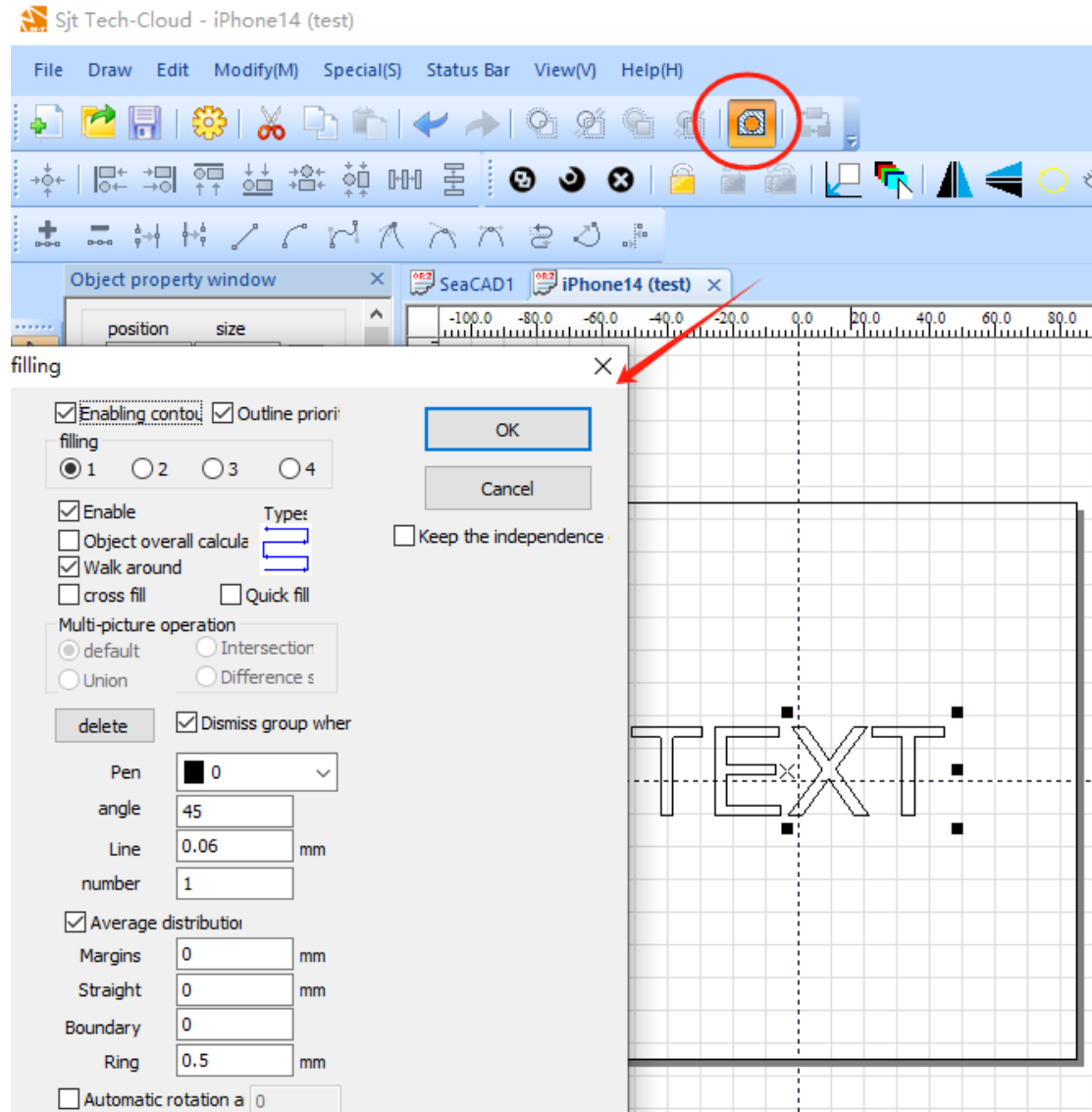
Select Mark total 1

Automatic re: Red light outline

Continuous red l 00:00:00

Custom text and graphic marking

When you use the tools on Seacad to customize problems and graphics, the default is only outline marking, and you must **fill** it in before you can create solid graphics.



For more tutorials, please visit the YouTube channel

<https://www.youtube.com/channel/UCqafJc0lyKeOmb-Vbi2Q8JQ>