

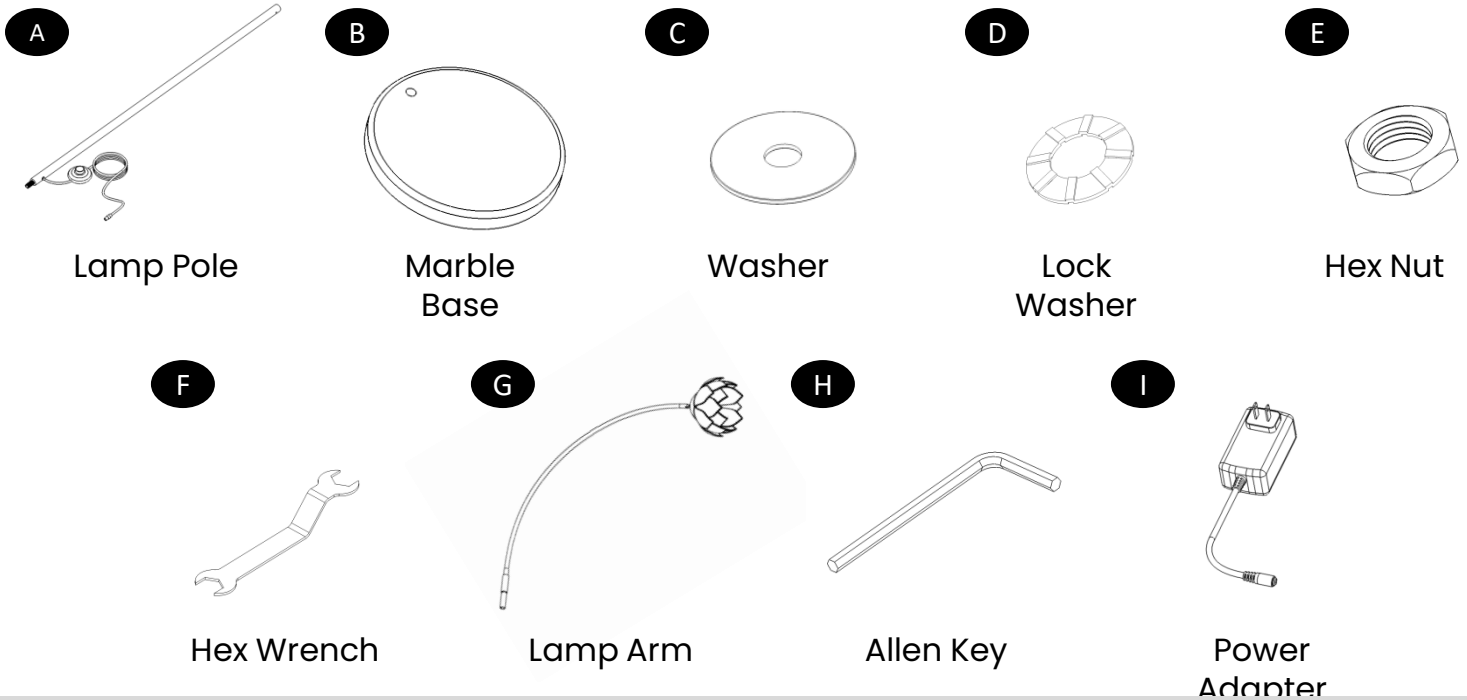
Questions, Problems, Missing Parts?

Please email us at:
customer@ourlivinglights.com



Brushed Brass
Single Floor Lamp
Model Number:
LL-LTADB

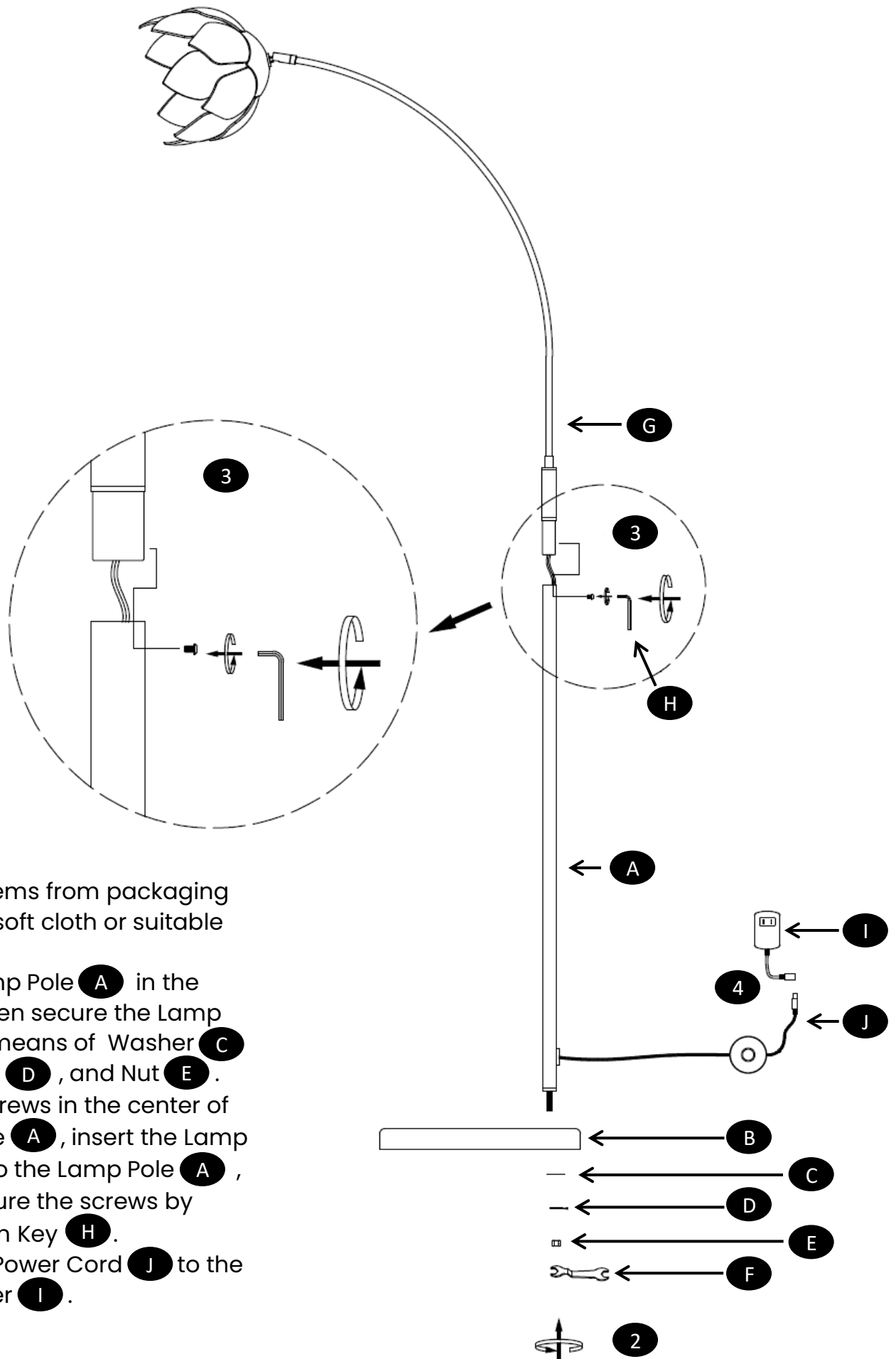
HARDWARE CONTENTS (Note: Hardware shown is not to scale)



⚠ SAFETY INFORMATION ⚠

Please read and understand this entire manual before attempting to assemble, operate or install the product.

ASSEMBLY INSTRUCTIONS



1. Remove all items from packaging and lay on a soft cloth or suitable surface.
2. Insert the Lamp Pole **A** in the Base **B** ; then secure the Lamp Pole **A** by means of Washer **C** , Lock Washer **D** , and Nut **E** .
3. Loosen the screws in the center of the Lamp Pole **A** , insert the Lamp Arms **G** into the Lamp Pole **A** , and then secure the screws by using the Allen Key **H** .
4. Connect the Power Cord **J** to the Power Adapter **I** .



OPERATION

At first startup, the light will be at 2700 K White Color Temperature and will start the Bloom operation. To change settings such as Brightness, Color, Bloom Speed and allowing multiple lights to sync together (via Grouping) Download the Living Lights App from Apple AppStore or Google Play Store.



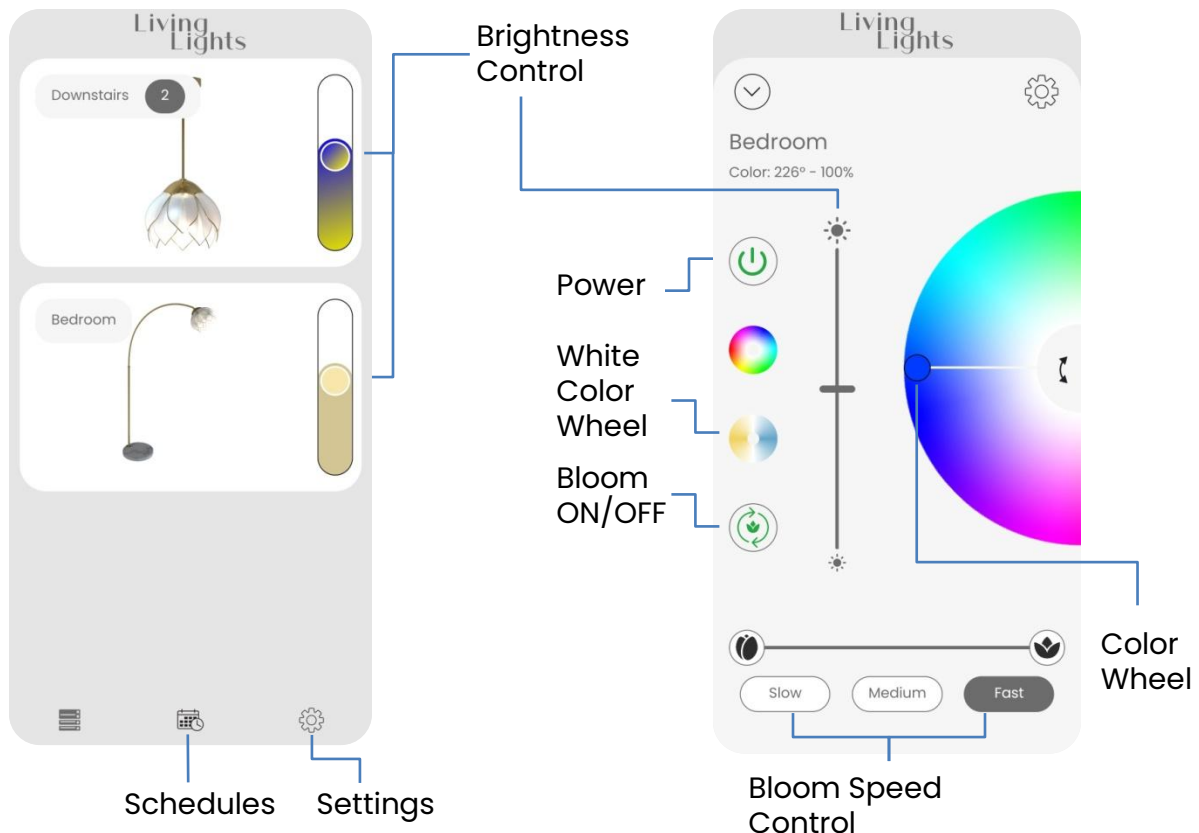
Living
Lights



Use The Living Lights App to create an account, add your lighting fixture to your Wi-Fi network (2.4GHz or 5GHz) and enjoy full control and customization.

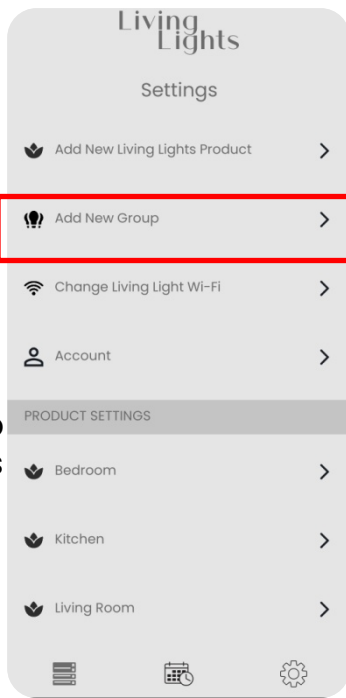
LIVING LIGHTS APP DASHBOARD

After adding your Living Light to the Wi-Fi, utilize the dashboard for easy control of Power, Brightness and Groups. We hope you enjoy Living Lights as much as we do.

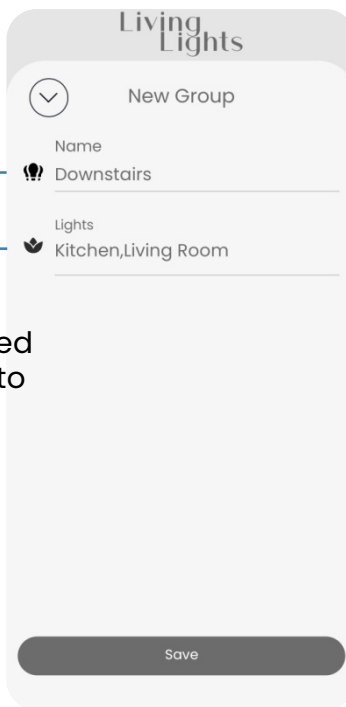


GROUPING LIVING LIGHTS

If you have 2 or more Living Lights on your account, you can group your lights for easier control.



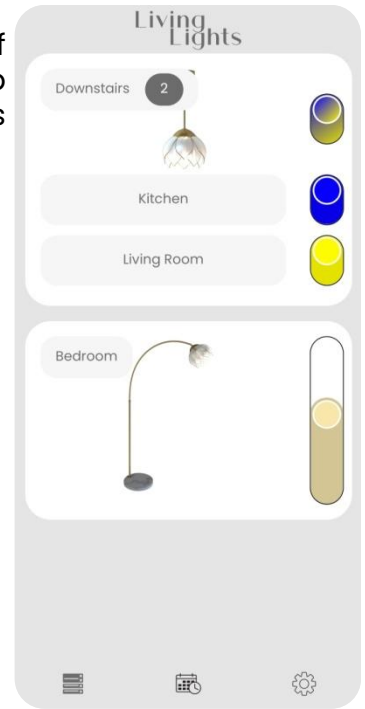
Give Group Name



Selected Lights to Group

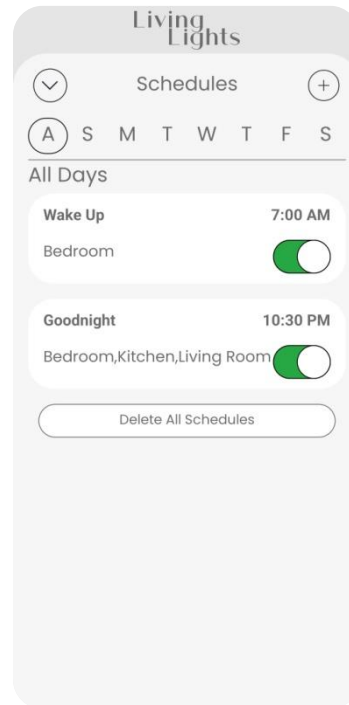
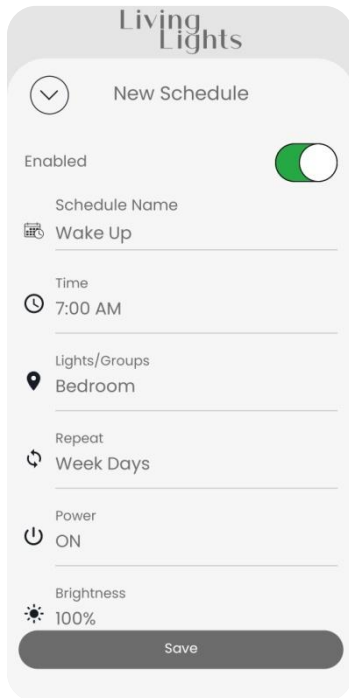
of group members

Group ON/OFF Controls



SCHEDULING

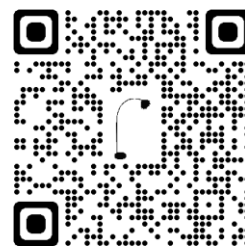
Set schedules to control lights automatically at a desired time. Schedules can be set for lights or groups. Once created, you can enable, disable, edit, or delete a schedule at any time.



Enable/Disable Schedule

CARE AND MAINTENANCE

- Use a dry soft cloth to dust the surface.
- Do not clean with abrasive materials, bleach or solvents.



Troubleshooting