



Beta RR-S Dash Installation Instructions

Introduction

The MotoSwiss dash can be installed in less than an hour using commonly available tools and is supplied with the fasteners you will need. Please refer to the parts list and assembly diagram and check that all parts are available before commencing disassembly of the stock setup. The kit has been successfully installed on the following model years. See notes below.

Model Year	Notes	Verified @ 9/19/22
2023	Same as 2022 but requires a Clic-R hose clip removal tool to remove and re-install the dash lights. Circa \$10 on Amazon/eBay – see webstore product info for link.	Yes
2022 and 2023	Now supplying custom mask mounting bracket to eliminate requirement for cutting the stock one.	Yes
2020-2021	Bolt-on of new bracket, no modifications. (see bar position compatibility chart)	Yes
2017-2019	Bolt-on of new bracket, no modifications (see bar position compatibility chart)	Yes
Earlier	Untested as at April 2022	No



Disassembly

1. Remove the headlight mask. It will swing to the side allowing sufficient access without the need for complete removal.
2. Disconnect the electrical connectors that are mounted on the steel bracket. The two largest connectors are the same and therefore can be re-installed incorrectly so mark one with a sharpie to aid identification later. Remove the connectors from the steel bracket.
3. Disconnect the connectors between the Voyager unit and the main harness, wheel sensor and temperature gauge wiring.

4. Remove the two screws holding the Voyager to the steel bracket. They are accessible from the underside of the unit. Be careful not to damage the screw heads, by applying good pressure to keep the screwdriver firmly seated. If you do damage the heads some pliers can be used to grip the edge of the screw head. These screws are not required for re-assembly.
5. Remove the Voyager and set aside.
6. Remove the key assembly by loosening and removing the steel ring and pushing it through the bottom of the bracket.
7. Remove the rubber mounted warning lights from the light housings by pulling each light out from the bottom of the light housing, they are just a friction fit. Mark each light in a way that you can identify them later as they all look the same but indicate different functions. Remove each housing from the bracket by pushing from the bottom. They are held in with friction fit O-rings and/or a C-Ring. Take note of the order of the lights from left to right.
8. Remove the steel bracket by loosening the two 10mm bolts attaching it to the upper triple clamp. Tuck all the loose cables to the side leaving your bike looking like this ready for install.
9. If you haven't already applied dielectric grease to your connectors, now would be a great time to do so to improve connection reliability. Your bike should look like this.

Installation

1. Install the mounting bracket to the Dash using the supplied spacers, M5 screws and lock washers. The short spacers shown here are for use with bar risers. Stock bars use longer spacers.



The chart below shows bar position compatibility. If you need to adjust your bar position, please do it now. If you need to run your bars in front forward position then

07/02/23

BAR POSITION COMPATIBILITY

POSITION	Front	Front	Mid	Mid	Rear	Rear
OFFSET	Forward	Rear	Forward	Rear	Forward	Rear
STOCK BAR HEIGHT						
Low Spacer	✗	✗	✗	✓	✓	✓
High Spacer	✗	✗	✓	✓	✓	✓
RISER BAR HEIGHT						
Low Spacer	✗	✓	✓	✓	✓	✓
High Spacer	✗	✗	✗	✓	✓	✓

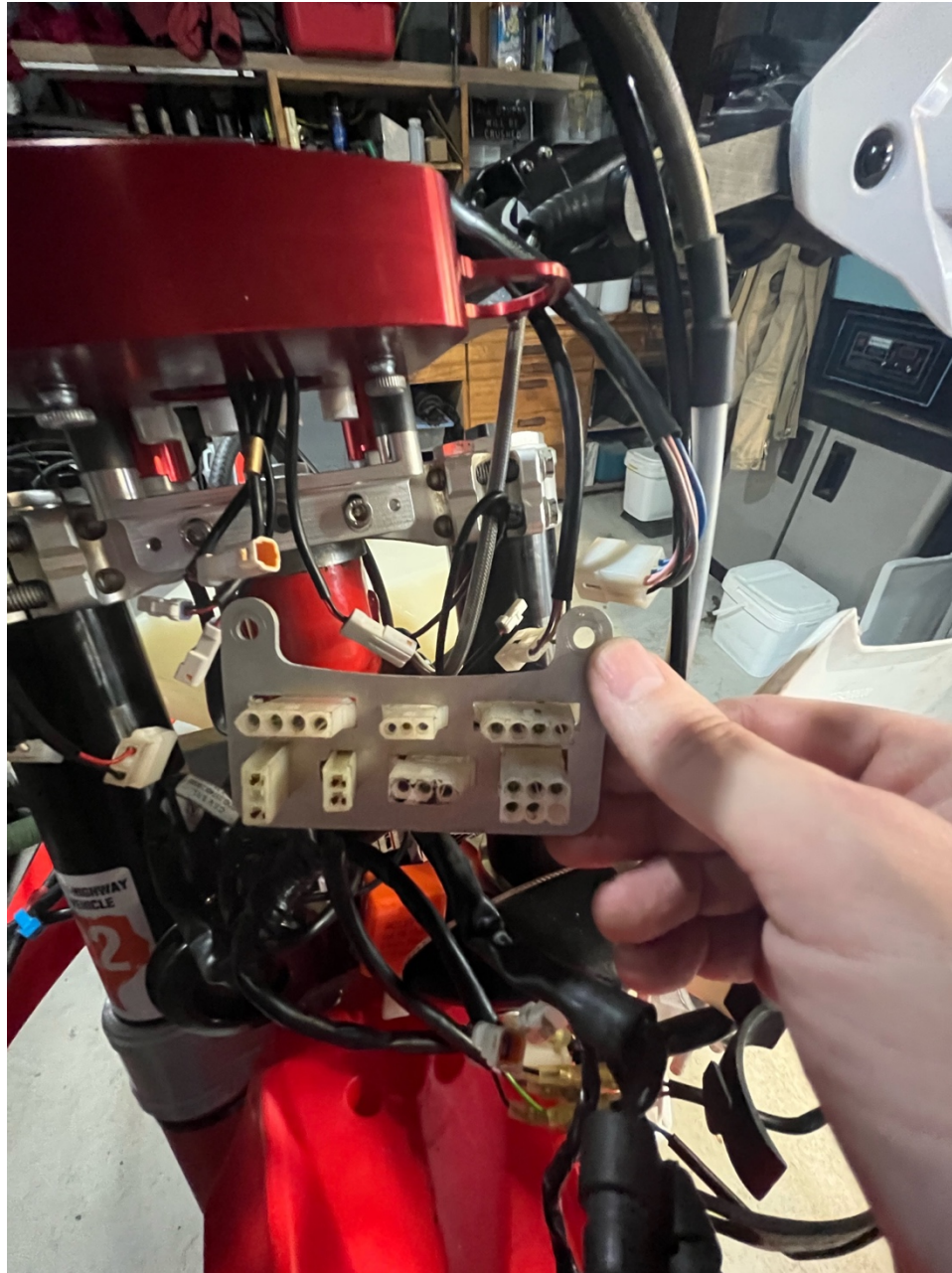
depending on your bar clamp/riser setup you may be able to achieve an acceptable solution by moving the dash mounting bracket forward a few millimeters using washers and longer M6 screws from your local hardware store. You can contact motoswiss directly at paul@motoswiss.com to discuss any custom fitment requirements you have.

2. Install the warning light housings by pushing in from the top noting the orientation which is controlled by the key on the housing seating in the notch in the dash recess. The housings are a snug fit but will go in. You may need to clean any glue or molding flash from the housings. Secure them with the original O-Rings and/or C-clips. Please note that in this photo the Voyager is already installed but we recommend you leave it out at this stage.

3. Attach the bracket and Dash assembly to the top triple clamp using the M6 fasteners provided. **Don't fully tighten yet** as the slots afford some adjustability which may be needed later.



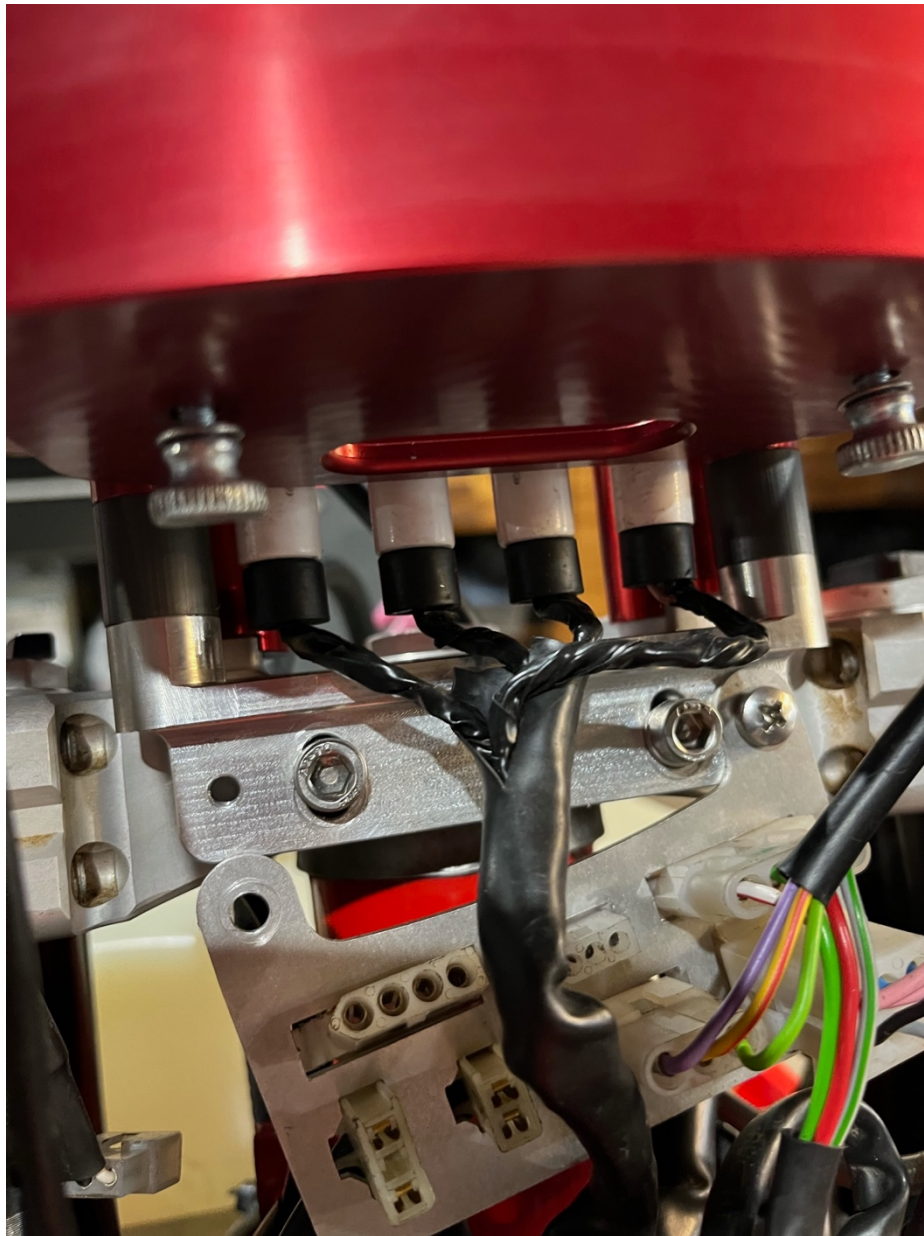
4. Insert the electrical connectors from the harness into the rear of the electrical panel. This is easiest if you do it before attaching the panel to the bracket.



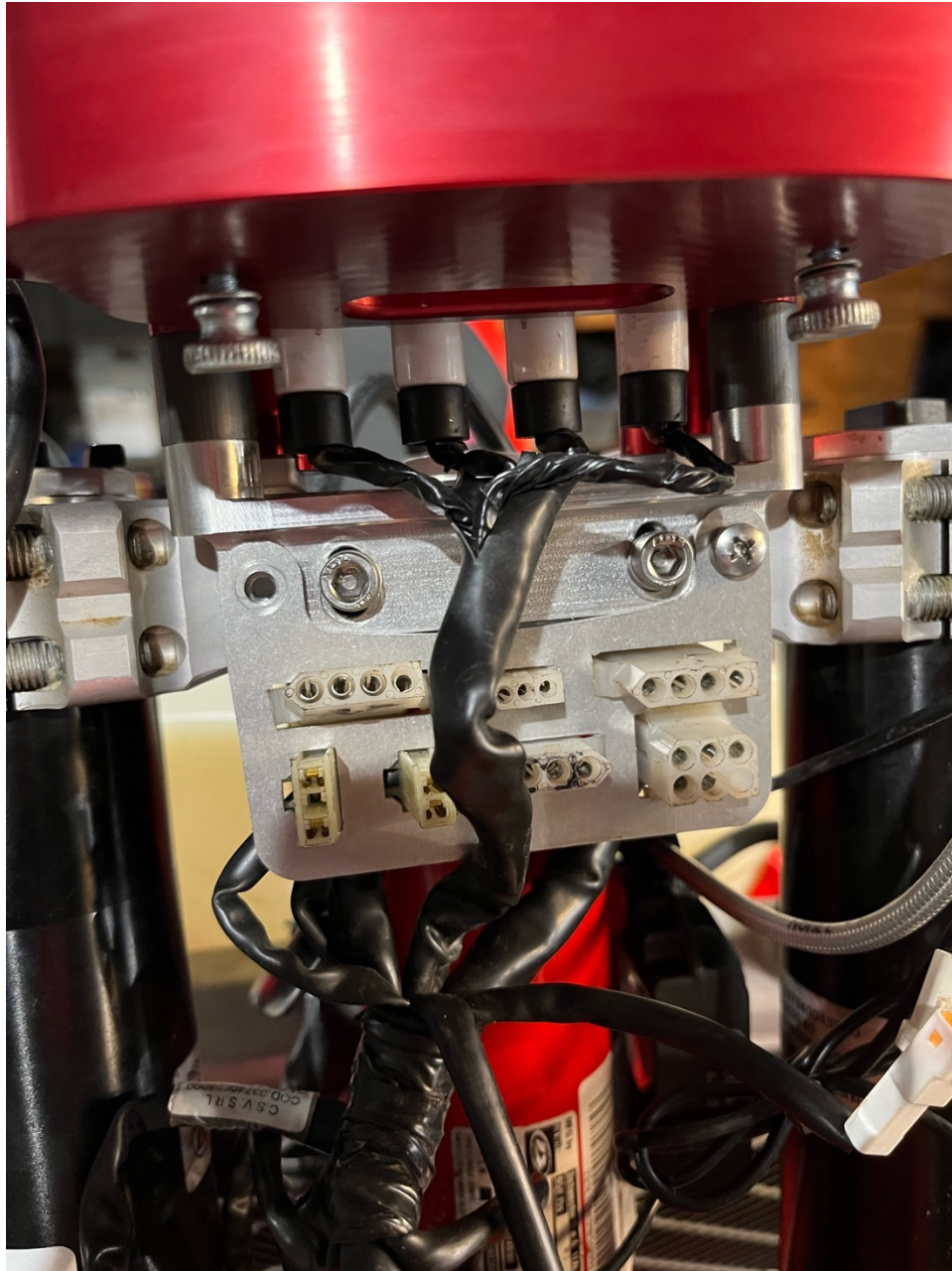
5. Now fasten the electrical panel to the bracket using the M5 Phillips Screws. You can leave the left-hand screw out for now as it will need to be removed later to install the cable tidy.



6. Insert the rubber instrument light holders into the light housings, it's a little fiddly. Get the rubber started then making sure its vertical push upwards using the tip of a flat screwdriver. If you didn't mark the lights earlier, you can connect the key and switchgear connectors and turn on the bike and activate the signals and high beam to determine which is which. The light that comes on straight away is the check engine light, and the final one is low fuel. If you have no fuel in your tank it may eliminate too, so the longer cable is the check engine.



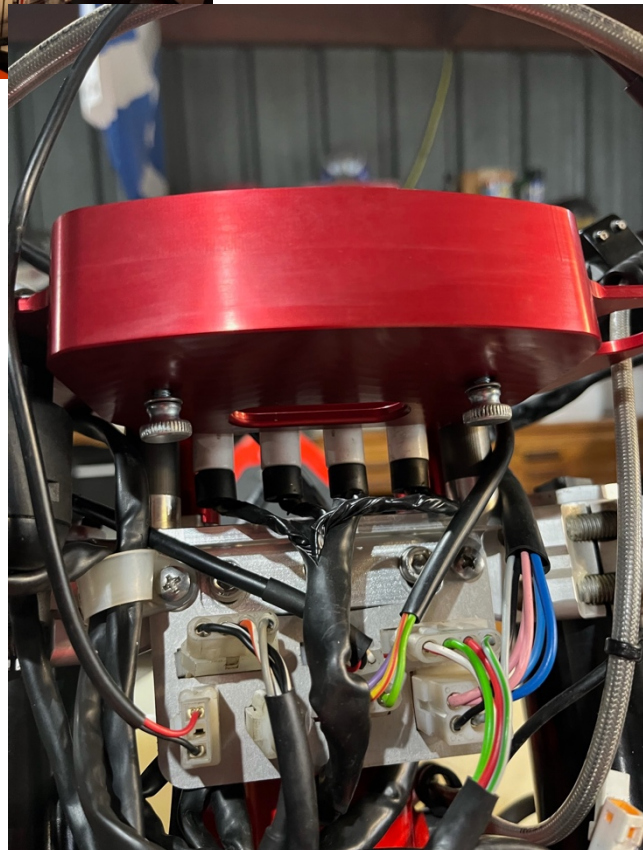
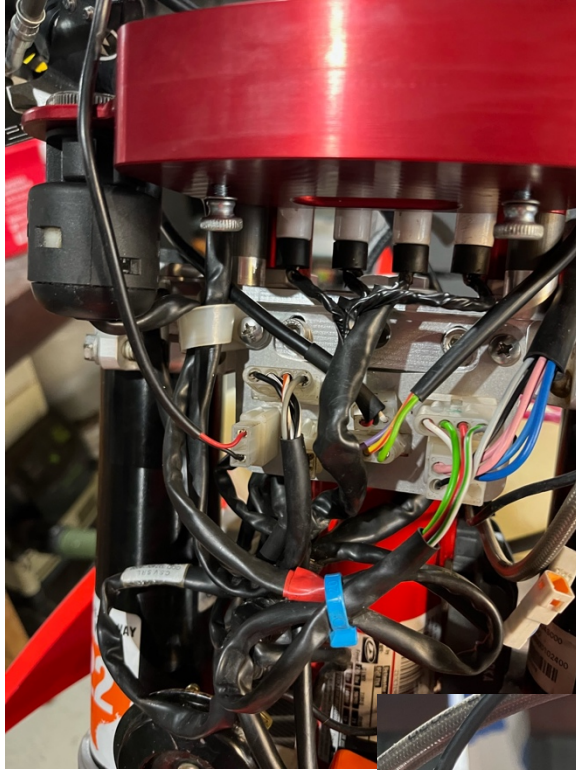
7. Your bike should now look like this. Note that I removed the voyager to ease access to the warning lights. You can also see that with the Voyager removed the thumb screws will stay in position because of the isolation mounts on the inside of the dash recess. If you took our advice in step 2 then these won't be installed yet anyway.



8. Now start to reconnect the electrical cables. Again, please note that the top left and top right connectors are interchangeable and if you don't install them correctly your bike will turn-over but not start! If you have relocated your engine mode switch to the handlebars as part of a large gas tank install you may find that that cable is too short to reach the top center cable location. If that's the case just remove the connector from the panel and connect directly, there's plenty length in the harness side.



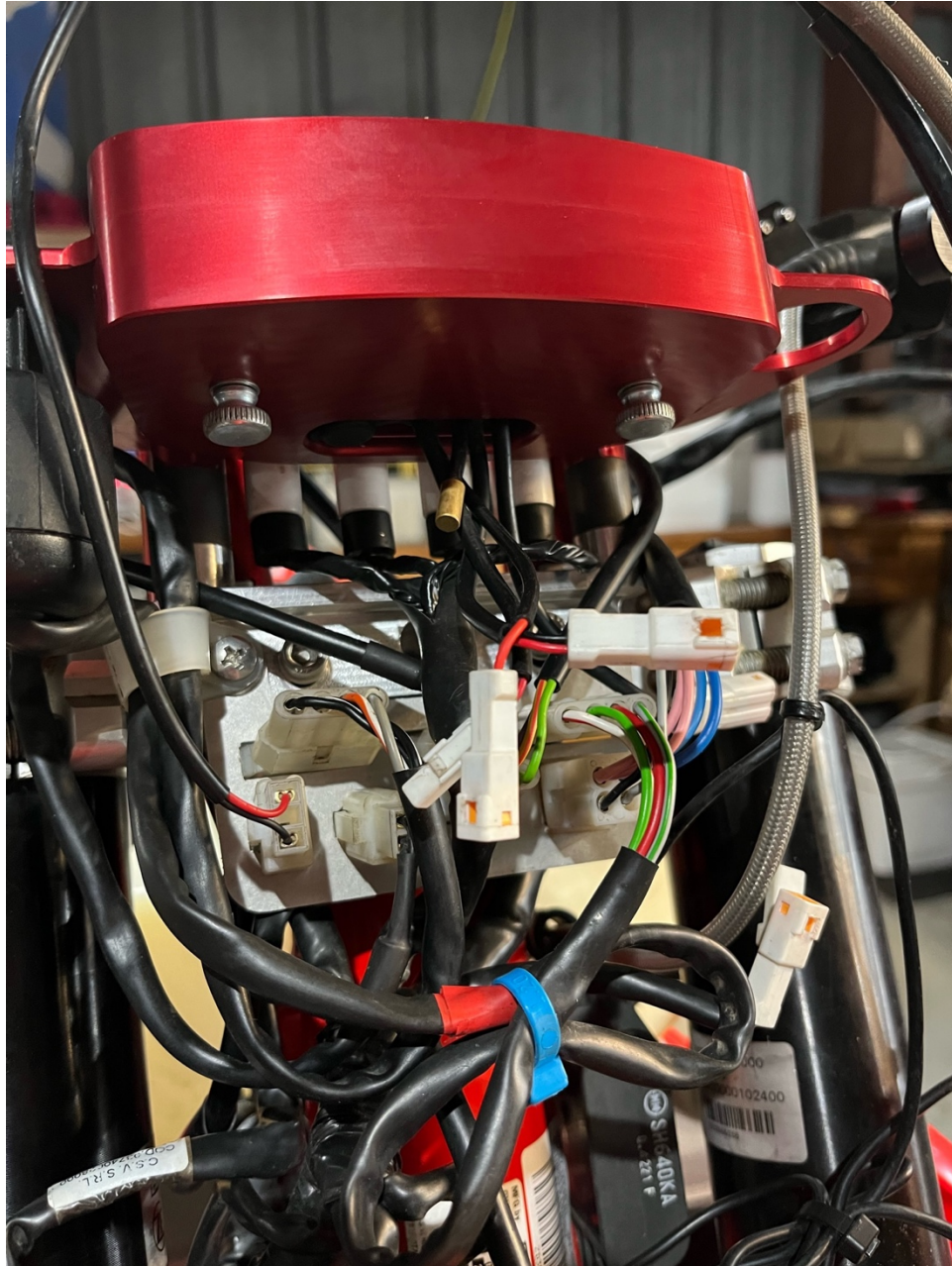
9. Install the key and tidy the cables to your satisfaction. Fine tune the height of the Dash assembly and fully tighten the bracket mounting screws. **Do not overtighten.**



10. It's now time to install the Voyager! If you are using the thumb screws, put an M4 washer on them and insert from the bottom. Push an isolation mount on from the top to keep in place. If you are not intending to use the MicroSD memory card, then you can choose to use the provided Flanged Allen Screws instead. Install isolation mounts in the same way.

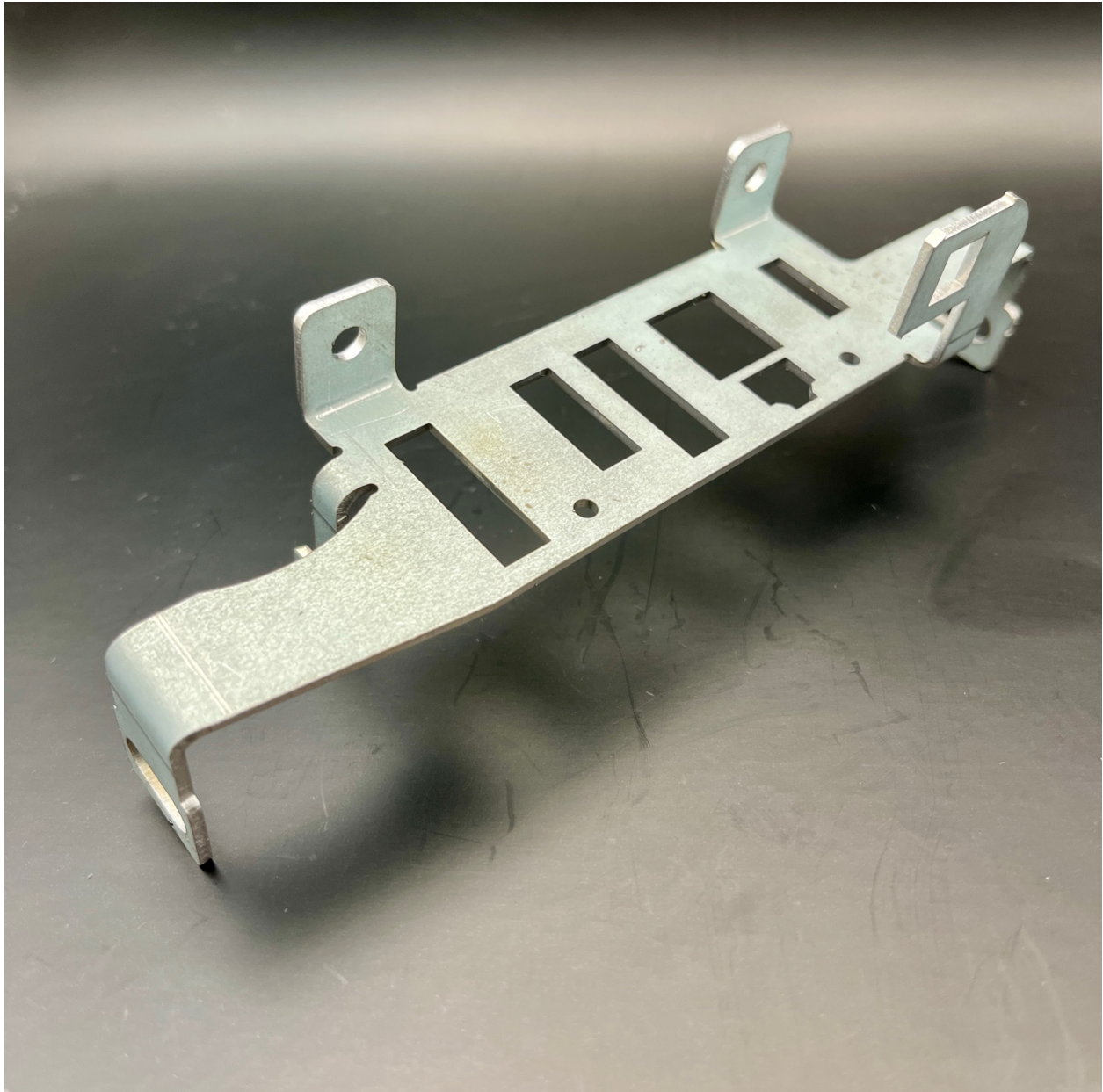


11. Pass the Voyager wires through the cable recess in the floor of the Dash making sure the temperature sensor also comes through. Make sure the MicroSD Card slot cover is seated properly and drop the Voyager into place. You will have to tip the Voyager slightly to the right to allow the slot cover rubber to slip into the recess in the housing. Reconnect the Voyager cables.



2022 Model Year Specific Instructions

The 2022 model year bikes have a stock bracket that incorporates headlight mask mounting points instead of the rubber straps on earlier bikes. In the photo below you will see the bracket we supply that replaces the stock one.



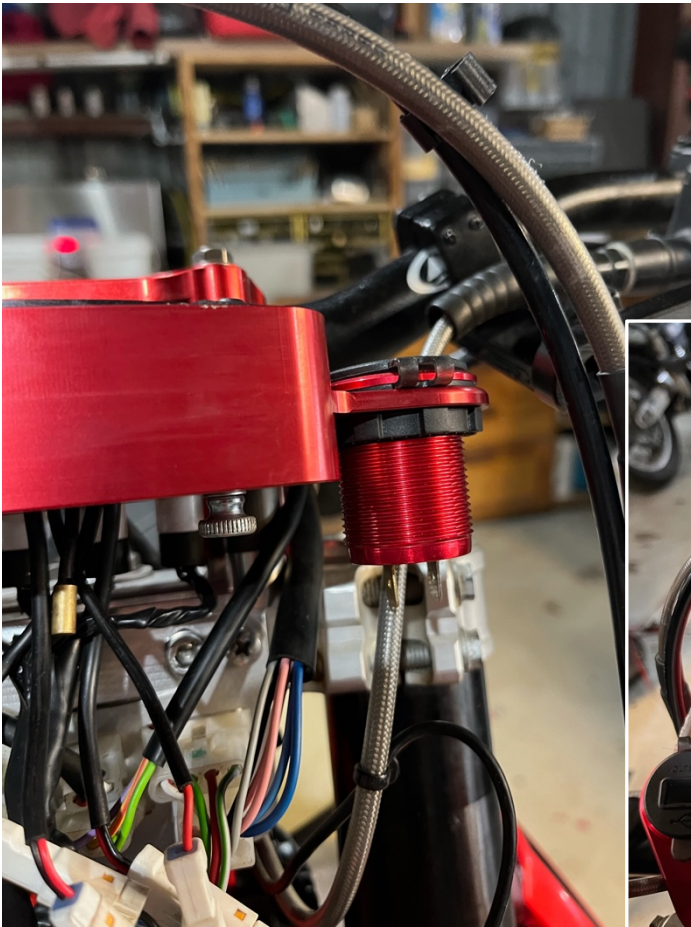
2023 Model Year Specific Instructions.

On the '23 bikes a fuel line clip has been used to secure the warning lights. You will need a 'Clic-R' type hose clip tool available for approximately \$10 on amazon and ebay.



Accessory Installation

Before continuing with installation of the power outlet or any other accessory we recommend loosening your handlebar mounted lever perch bolts and switchgear to allow fine tuning of cable routing. Check all cables to ensure no pinching or chaffing.



Adjust and tighten handlebar controls. Re-attach the mask and stand back and admire your work!

MOTO  SWISS
INSTALLATION NOTES

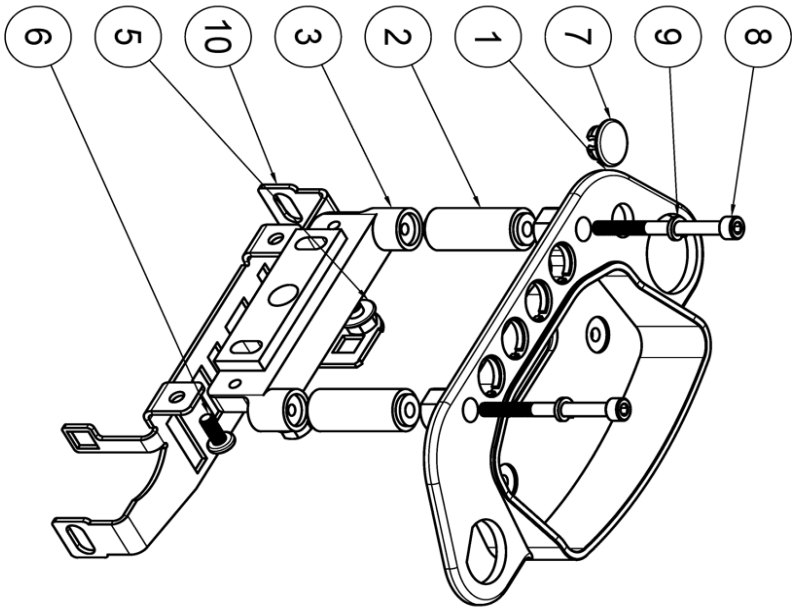
Note that the bike used in this installation guide has 20mm bar risers installed. Bar risers allow you to mount the Dash lower behind the mask as shown here than when used with stock bar clamps.



The bike with Silver Dash has stock bars installed.

Bar Risers may cause the bars to obscure the view of instrument lights depending on height of rider and bar fore/aft position.

Copyright, The Murrum Company, LLC. 2022 All Rights Reserved



PARTS LIST		
ITEM	PART NAME	QTY
1	VOYAGER DASH - V1.0 V73	1
2	36MM SPACER V10	2
3	BETA RR-S MOUNTING BRACKET V50	1
5	94036A221 CLASS 8.8 STEEL FLANGED HEX HEAD SCREW	2
6	92000A322_PASSIVATED_18-8 STAINLESS STEEL PAN HEAD PHILLIPS SCREWS	2
7	9688K125_NYLON PLASTIC SNAP-IN PANEL PLUGS	1
8	91292A690_18-8 STAINLESS STEEL SOCKET HEAD SCREW	2
9	91111A124_18-8 STAINLESS STEEL SPLIT LOCK WASHER	2
10	2022+ BRACKET V45	1

NOTES

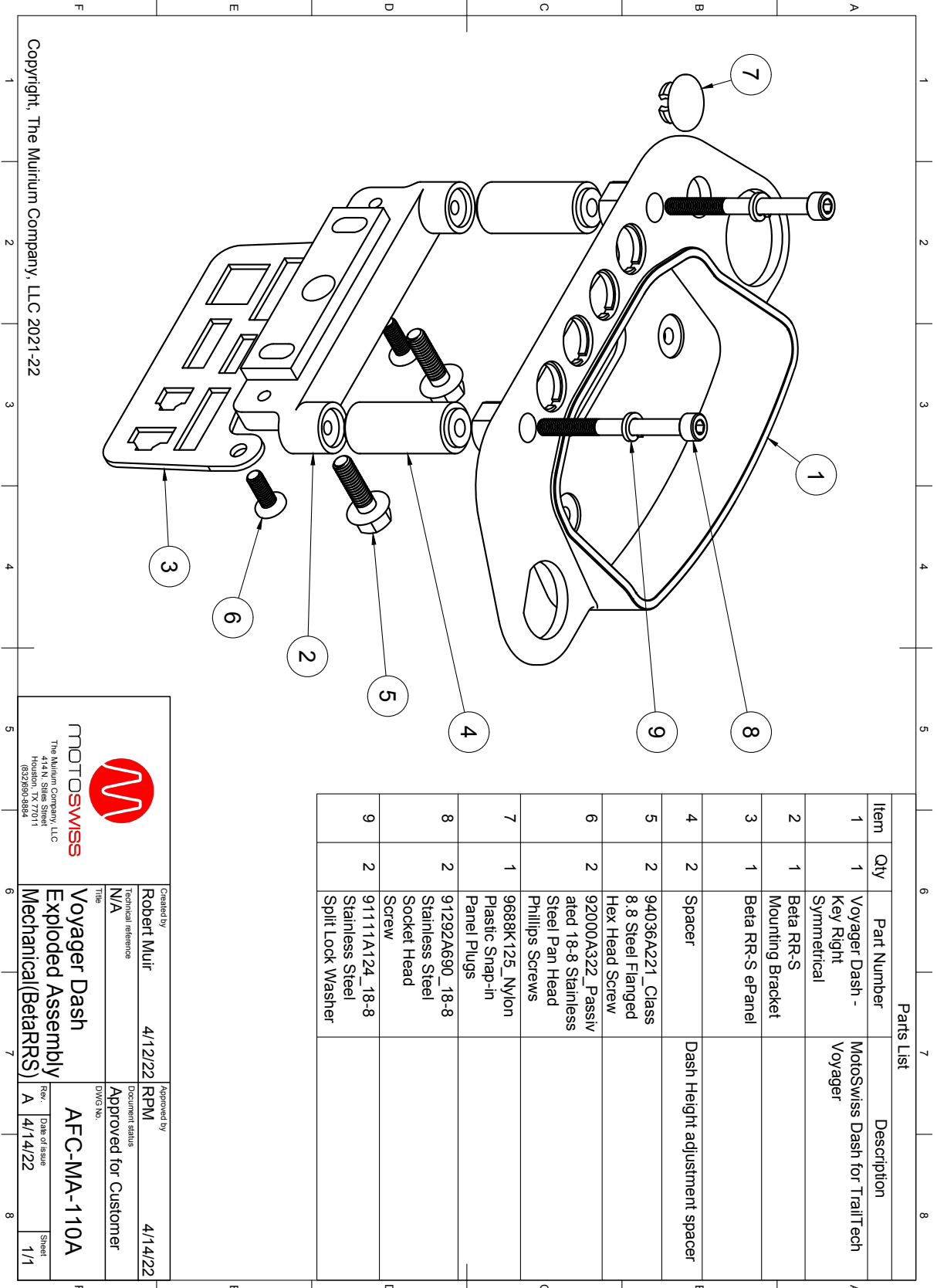
1.	SPACER HEIGHT VARIES BY BAR HEIGHT
2.	SCREWS (6) MAY BE HEX PAN HEAD
3.	
4.	
5.	
6.	
7.	

Units are mm
Tolerances Unless Noted
XX = ± 0.5
X.X = ± 0.1
X.XX = ± 0.02
X.xxx = ± 0.005
Angles +/- 1°


MATERIAL	WEIGHT	SURFACE AREA	SCALE

Voyager Dash Beta RR-S MY 2022/3		
DRAWN	CHECKED	
F360	RPM	B


MOTOSWISS
The Murrum Company, LLC
2505 Hazard St, Houston TX
77019
pau@motoswiss.com



Parts List			
Item	Qty	Part Number	Description
1	1	Voyager Dash - Key Right Symmetrical	MotoSwiss Dash for TrailTech Voyager
2	1	Beta RR-S Mounting Bracket	
3	1	Beta RR-S ePanel	
4	2	Spacer	Dash Height adjustment spacer
5	2	94036A221_Class 8.8 Steel Flanged Hex Head Screw	
6	2	92000A322_Passivated 1/8-8 Stainless Steel Pan Head Phillips Screws	
7	1	9688K125_Nylon Plastic Snap-in Panel Plugs	
8	2	91292A690_18-8 Stainless Steel Socket Head Screw	
9	2	91111A124_18-8 Stainless Steel Split Lock Washer	

 <p>MOTOSWISS The Muirum Company, LLC Houston, TX 77011 (832)860-8894</p>		Created by	Robert Muir	4/12/22	Approved by	RPM	4/14/22
		Technical reference	N/A		Document status	Approved for Customer	
Title		Voyager Dash Exploded Assembly Mechanical (BetaRRS)		DWG No.		AF-C-MA-110A	
Rev.	A	Date of issue	4/14/22	Sheet	1/1		

Copyright, The Muirum Company, LLC 2021-22