

 **PHOENIX GOLD**

ZX
series



FULL CLASS-D TECHNOLOGY 4-CHANNEL AND MONO MINI AMPLIFIERS

Model: **ZXM500.4 - ZXM500.1**

SPECIFICATIONS

- Full Class-D technology offers efficiency & performance
- Short circuit/thermal and high/low voltage protection
- Excellent signal to noise ratio and FM noise rejection
 - Remote gain controller included (*only ZXM500.1*)
 - Built in protection LED light status indicator
 - Surface mount component technology
 - Ultra small size for easy installation
 - Autostart on high-level input
 - Full adjustable HP & LP filter

All specifications subject to change without notice.

ZXM500.4 - ZXM500.1 - Specifications & Installation

	ZXM500.1	ZXM500.4
Class	Class-D	Class-D
Frequency Response	20Hz - 500Hz	20Hz - 20KHz
Max Power Rating	1000W	1000W
RMS Power Ratings	500W x 1 @ 1ohm 360W x 1 @ 2ohm 230W x 1 @ 4ohm	125W x 4 @ 2ohm 80W x 4 @ 4ohm 250W x 2 @ 4ohm bridged
Signal to Noise Ratio (SNR)	>90dB (1W @ 4ohm)	>90dB (1W @ 4ohm)
Total Harmonic Distortion (THD)	<0.3%	<0.3%
Low Pass Filter (LPF)	40Hz - 250Hz (24dB/Oct)	40Hz - 400Hz (12dB/Oct)
High Pass Filter (HPF)	N/A	40Hz - 400Hz (12dB/Oct)
Subsonic	10Hz - 50Hz (24dB/Oct)	N/A
Bass Boost	0 - 18dB @ 45Hz	N/A
Input Sensitivity	0.25V - 6V	0.25V - 6V
High - Low Level Input Sensitivity	0.2V - 10V	0.2V - 10V
Remote Control	Yes (Included)	N/A
Auto Turn-On	Yes	Yes
Operating Voltage	7V - 16.5V	7V - 16.5V
Power Terminal	10mm ²	10mm ²
Dimensions (LxWxH)	165 x 83.1 x 34.8mm	165 x 83.1 x 34.8mm

Installation

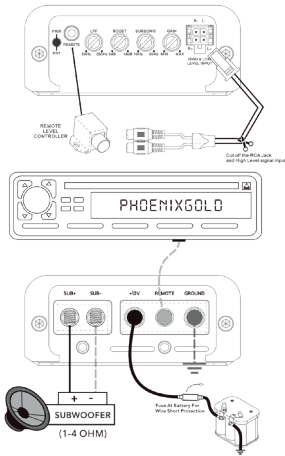
Make sure the enclosure is firmly fixed in your vehicle. Check before drilling or cutting holes. DO NOT work near fuel tanks, fuel lines hydraulic lines or electrical wiring.

Amplifiers are generally mounted in the hatch/trunk area of a car or SUV, and under or behind the seat of most trucks. Select a location that will provide adequate ventilation for the amplifier. Secure the amplifier with the screws provided.

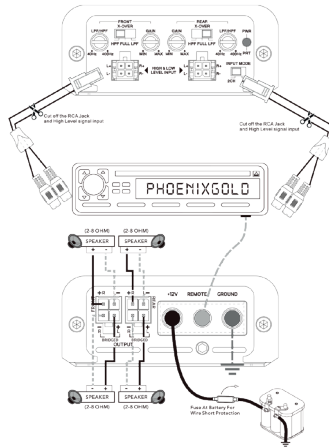
DO NOT mount the amplifier in such a way as to pinch or damage the wires.

1. Before you start, disconnect the car battery's negative cable and ensure it is isolated during the installation.
2. Run an appropriate gauge wire from the battery to the amplifier. Ensure that the wire being used is good quality as this cable will carry a very high current.
3. Find the closest clear metal area to the amp for a ground. Sand, grind or scrape all paint and undercoating from the body and screw the ground securely in place. Test the ground with an ohm meter if desired.
4. Decide where you are ideally going to mount the amp. Once placed, run the speaker wire to the speakers. Make sure the polarity (+ and -) are correctly installed.
5. Connect the power and ground to the amplifier.
6. Connect the power wire to the battery using a fuse capable of the total current load of all amplifiers connected. Locate the fuse as close as possible to the battery.
7. Connect the remote wire from the head unit to the amplifier.
8. Connect the RCA's to the amplifier.
9. When everything is connected, power on the unit and leave the gain all the way down at first. Start with the head unit volume low and work your way up.
10. Now you can tune the amp. Take your time and make only one adjustment at a time. It may take some time to get the system fully adjusted. During this time, the amp is drawing current from the battery. You should check the battery voltage from time to time and re-charge it if it gets low.

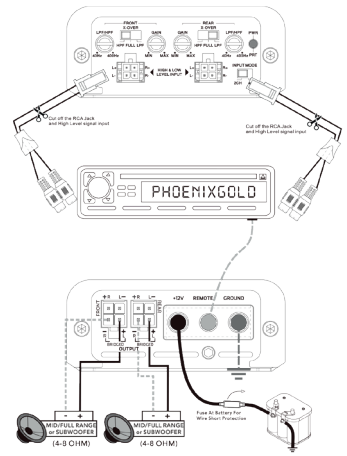
ZXM500.4 - ZXM500.1 - Connection Diagrams



ZXM500.1 Install

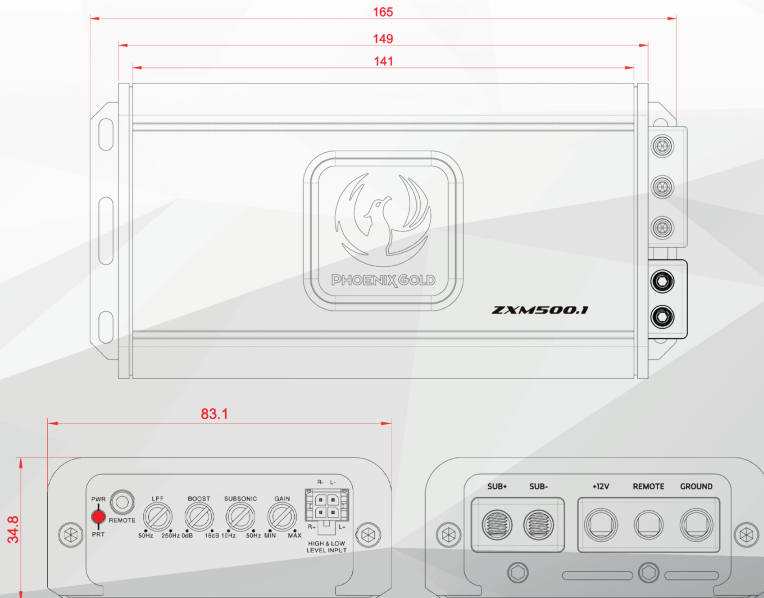


ZXM500.4 Install

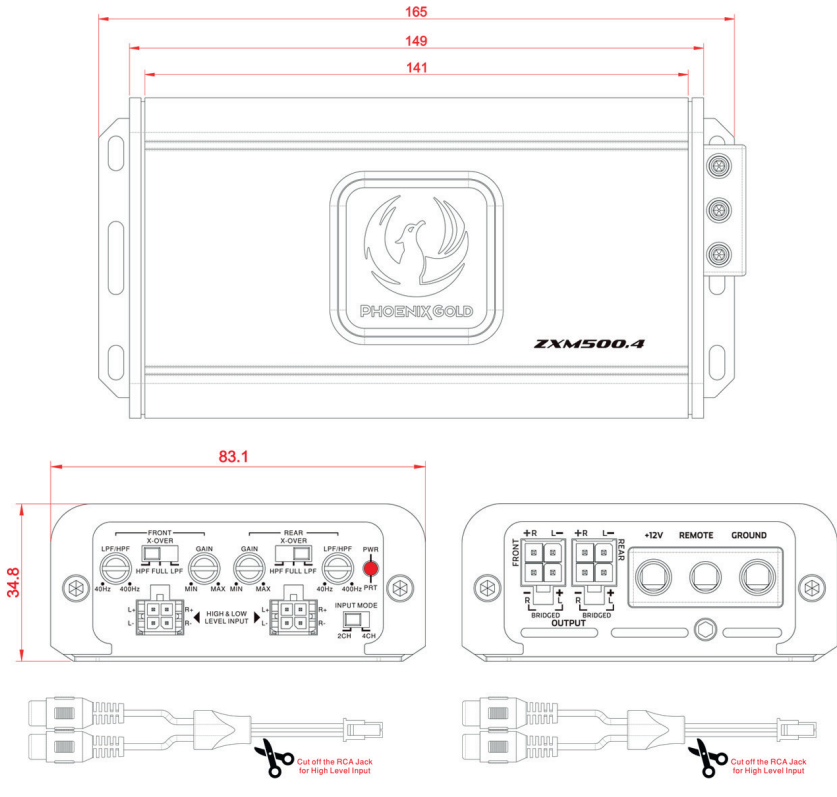


ZXM500.4 Install
(Bridged)

ZXM500.1 - Line Diagram



ZXM500.4 - Line Diagram



Disclaimer

Always ensure the enclosure is securely attached, to avoid movement. PHOENIX GOLD accepts no responsibility for damage or injury in relation to inappropriate securing of this product.

Phoenix Gold Product Warranty

LIMITED WARRANTY ON AMPLIFIERS

Phoenix Gold warrants this product to be free of defects in materials and workmanship for a period of one (1) years from the original date of purchase. This warranty is not transferable and applies only to the original purchaser from an authorized Phoenix Gold dealer. Should service be necessary under this warranty for any reason due to manufacturing defect or malfunction, Phoenix Gold or it's Country distributor / reseller will (at its discretion) repair or replace the defective product with new or re-manufactured product at no charge. Damage caused by the following is not covered under warranty: accident, misuse, abuse, product modification or neglect, failure to follow installation instructions, unauthorized repair attempts, misrepresentations by the seller. This warranty does not cover incidental or consequential damages and does not cover the cost of removing or reinstalling the unit(s). Cosmetic damage due to accident or normal wear and tear is not covered under warranty.