



Maserati Ghibli 2014-2016 (8 inch Infotainment System)

DIP SWITCH SETTINGS

1-7 OFF 8-ON

Please note whenever you make a dipswitch change you must press the reset button on the back of the carplay box to apply the changes.

In addition to the above, Dip Switch 8 OFF if adding an aftermarket reverse camera.

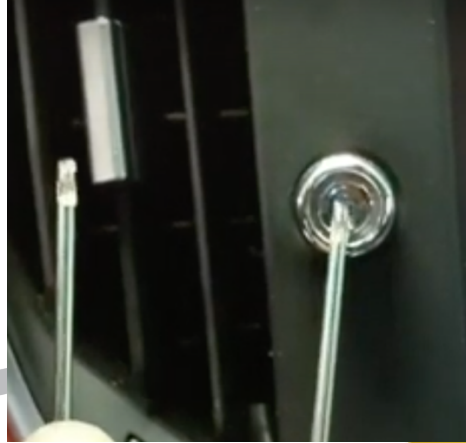
Dip switch setting 4 On if adding a reverse camera to a MANUAL transmission.

Dip switch setting 8 ON default if no aftermarket camera in use or using the factory fitted reverse camera.

Maserati Ghibli 2014-2016 CarPlay Integration Interface installation

DISCLAIMER – This installation guide is designed to give an overview of the installation process only. Please take your car to a qualified automotive installer if you are unsure of your ability to perform the steps detailed within. Our liability only extends to the product itself, not any installation related problems that may occur. Always ensure that your ignition/power is switched OFF throughout the installation process to avoid any warning lights showing if switches/components are disconnected with ignition powered on

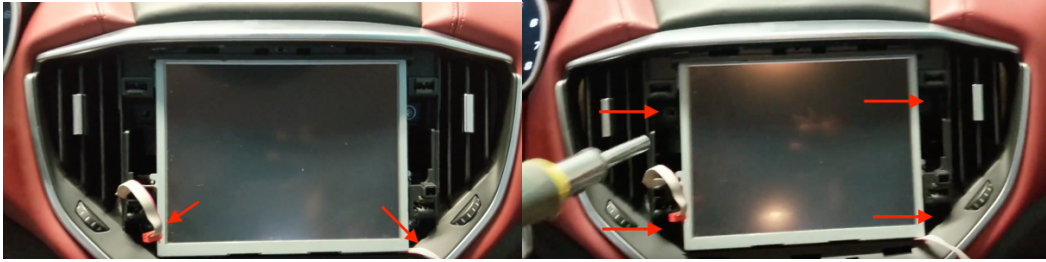
- 1) Use trim tool or thin edged tool to pry off the plastic cover from both rotary knobs, to expose screws - Unscrew and remove button casing



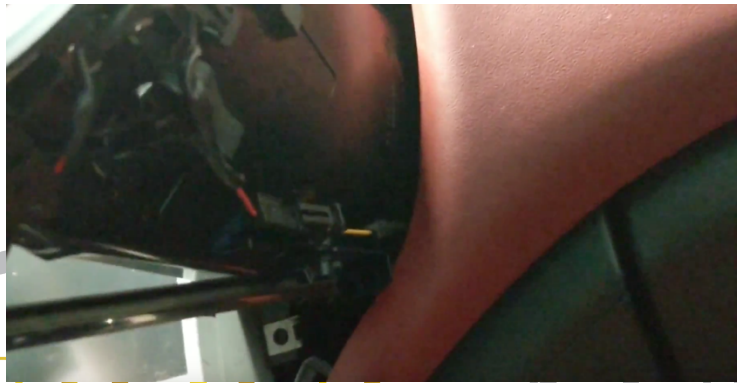
- 2) Use trim tool to carefully remove bezel (clip locations shown with red arrow - recommended to start from top clips)



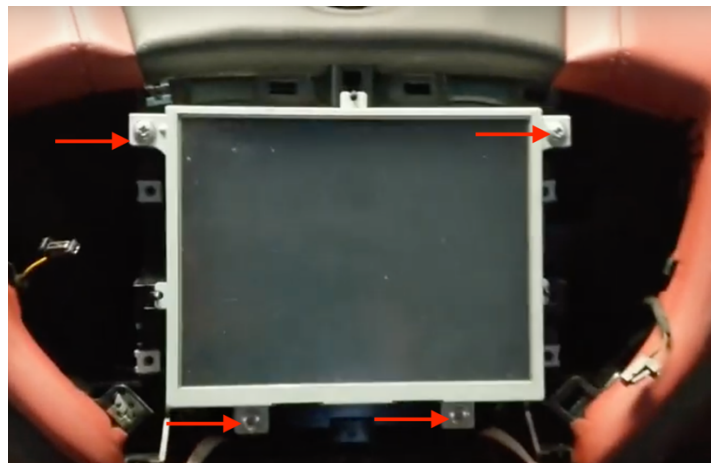
3) Remove 2 x cables from rear of the plastic trim, remove 4 screws holding in vent unit



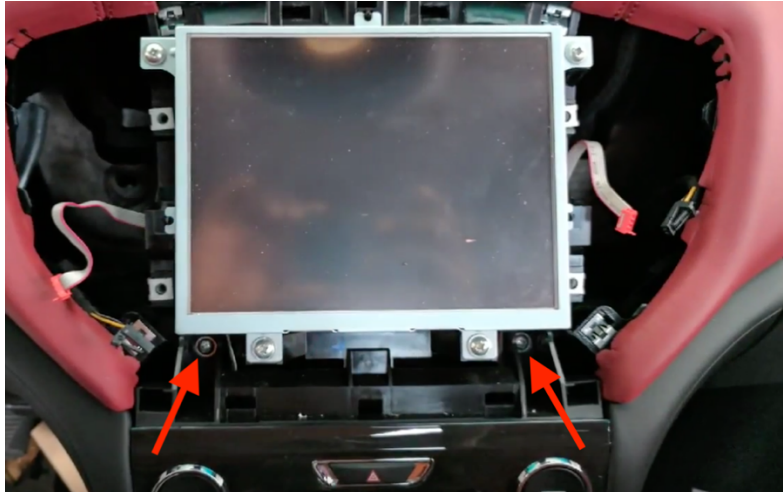
4) Remove electrical connectors retaining air vents



5) Remove 4 screws holding in screen unit



- 6) Get access to main radio headunit – to do this you will need to unscrew 2 x screws shown below holding front panel, and expose other 2 screws at side of unit
- a) Use trim tool to remove small plastic trim panel at either side of radio (at bottom) – undo screws and then radio unit should be ready to be removed. If not possible to move enough, may need to remove gear stick (plastic flap panel at bottom front of stick) flip out with trim tool, unscrew and pull stick straight up.



- b) Plug inline connector behind headunit – power passthrough plugs in line behind matching factory power cable

LCD IN – plugs into original LVDS port on Maserati headunit (marked with arrow below)
LCD OUT – plugs into cable removed from original LCD port



Once installed, to switch in/out of CarPlay display, long press highlighted button

