



VW Golf MK7 CarPlay Integration Interface – installation guide

Dip switch settings

5.8" Screen
1-On 8-On

6.5"/7"/8" Screen
1-7 OFF 8-On

In addition to the above, Dip Switch 8 OFF if adding an aftermarket reverse camera.

Dip switch setting 4 On if adding a reverse camera to a MANUAL transmission.

Dip switch setting 8 ON default if no aftermarket camera in use or using the factory fitted reverse camera.

VW Golf MK7 CarPlay Integration Interface Kit

Installation instructions

DISCLAIMER – Installation of this product is carried out at your own risk, this installation manual is provided for illustrative purposes only. Certain models/years of vehicles may have slight variances from the pictures shown. We are not responsible for any damage caused due to incorrect fitting. If you doubt your ability to perform the installation steps, please consult a qualified installer.

Installation steps

- 1) Remove glovebox mounted infotainment unit and disconnect
- 2) Remove glovebox
- 3) Plug in CarPlay interface wiring behind infotainment unit in dashboard
- 4) Locate CarPlay box in space above glovebox
- 5) Run wiring for microphone, locate in overhead console or on A Pillar (stand and cover fitted to mic is removable for overhead console install.
- 6) Refit

Wiring diagram notes – from box side – if the vehicle is fitted with MDI Interface please see later MDI notes before making connections.

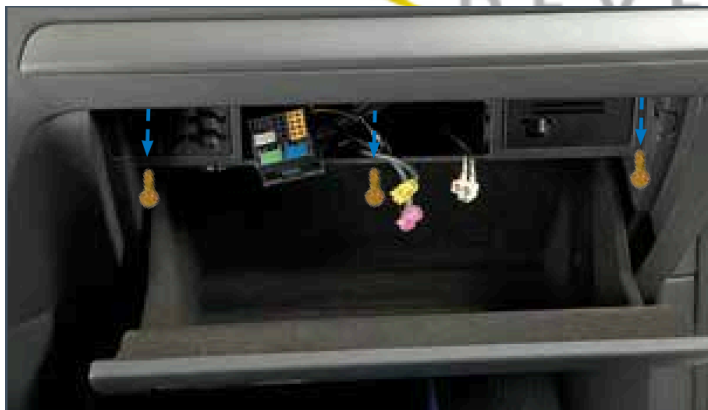




Open glovebox, see VW infotainment unit and insert the two release keys, push carefully until they engage and are held in the slot.



Remove unit and disconnect connectors at rear.



Remove screws from top lip of glovebox in marked locations.





Remove screws from bottom of glovebox lid.



Using plastic trim tool, carefully lever dashboard side panel to remove.



Carefully unplug passenger airbag switch
(Please note – do not remove with
ignition powered to avoid triggering an
airbag warning light)

UNIQUE AUTO
DEVELOPMENTS



Remove marked screw from side panel as shown.



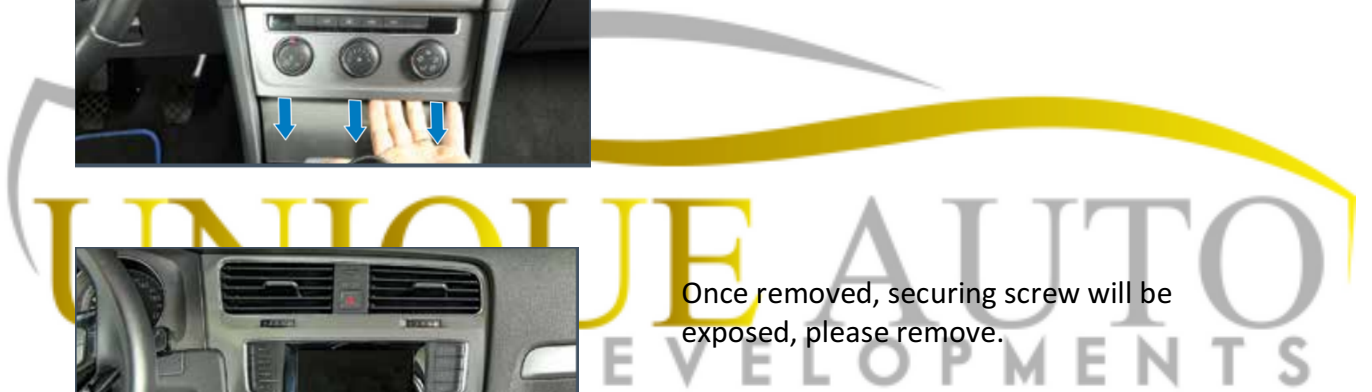
Carefully remove trim cover from climate control unit.

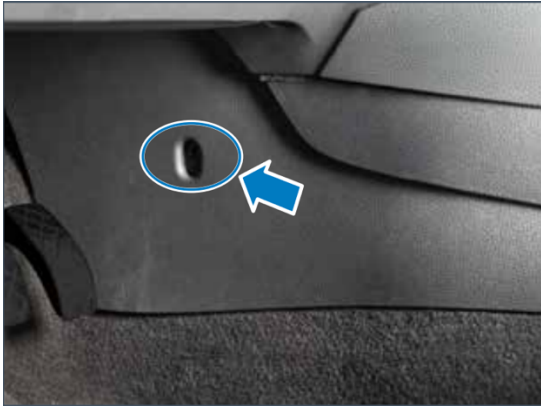


Once removed, securing screw will be exposed, please remove.



Remove highlighted screw from right trim panel.





Remove highlighted screw from left trim panel.



Use plastic trim tool to remove highlighted trim cover as shown.



U **E** AUTO
VELOPMENTS

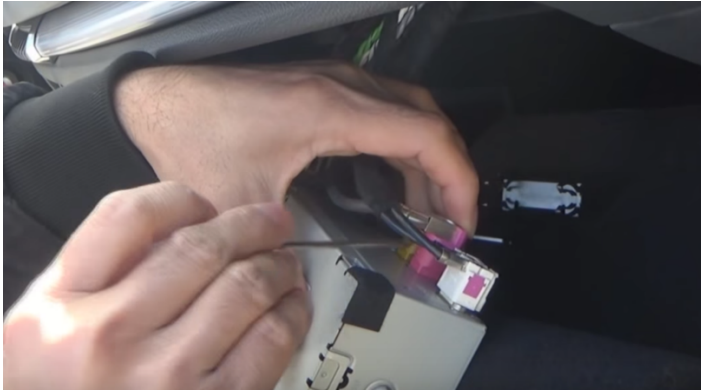


Now glove compartment is ready for removal, to do so, carefully pull towards you.



Connect quadlock connectors from CarPlay wiring in line between original connector and infotainment unit (see wiring diagram for clarification)

AUTO
DEVELOPMENTS



LVDS video cable note - (colour may vary – pink or grey depending on car specification)



Male lead 'LCD IN' from Carplay box plugs into back of infotainment unit as shown, 'LCD OUT' connects to original car screen connector removed from infotainment unit.

Once all connections are made, place CarPlay box securely in aperture above glovebox, refit glovebox, ensuring all bolts are tightened. ensure all wiring is clear and not trapped, then slide infotainment drive back into place (with removal tools removed) until it securely clips into place.

Turn on ignition to test operation – Ensure your cars audio source is set to 'AUX' input to hear sound from the CarPlay box – If your car is fitted with MDI please see MDI notes later in the guide.

Ensure when you plug in your iPhone that you use a genuine Apple lightning cable – aftermarket lightning cables can cause instability of operation.

---END-----



Controls overview –

Long press **MENU** – to enter/exit CarPlay

Short press **PHONE** for Siri

Right selection knob to scroll, press to select

Touch screen control

UNIQUE AUTO
DEVELOPMENTS

NOTE FOR VEHICLES EQUIPPED WITH MDI (Multimedia Device Interface)

To hear sound from the CarPlay unit, replace the 3.5mm Audio passthrough cable with the included long MDI lead (plugging in at 3.5mm end coming from CarPlay box side – marked 'AUDIO OUT' and route to the cars MDI port)



After cable is plugged in, on original car radio, please press media button then source button in top right corner, you will see a new option of 'AUX – External Audio Player' input – please select this then 'External audio source is active' will appear onscreen and you will hear sound.

UNIQUE AUTO
DEVELOPMENTS