

# Ustellar

## LED RGB Light Strip User Guide

Please scan the QR code below to  
download APP – “Lotus Lantern”.



## LED RGB Light Strip User Guide

---

THANK YOU for choosing Novostella. To optimize user experience, please use the product according to the following instructions.

### **Warning**

- (1) Winding lighting is prohibited, as it affects heat dissipation and might cause dangers.
- (2) Please unroll the light strip from the plate before lighting it up.
- (3) Please check if the light strip and the parts are intact before using them.
- (4) Please make sure that the power supply is turned off before installation.
- (5) Please use the attached power adapter only, to ensure that the light works properly.
- (6) Please do not use this light in the open air or under humid environment.

## 1. Specification

<b>P/N</b>	UT33360-RGB-EU-NF	UT33360-RGB-UK-NF
<b>Model</b>	UT33360-RGB-EU-NF	UT33360-RGB-UK-NF
<b>Wattage</b>	12W	
<b>Color</b>	RGB	
<b>Total Length</b>	20ft / 6m	
<b>LED Type</b>	5050	
<b>LED Quantity</b>	108 LEDs	
<b>Input Voltage</b>	100-240V AC	
<b>Frequency</b>	50/60Hz	
<b>Working Voltage</b>	24V	
<b>Working Temperature</b>	-25°C~40°C	
<b>Restriction</b>	Indoor Use Only	
<b>Battery Type</b>	CR2025 (for remote controller)	
<b>Package Includes</b>	Light Strip x 2, Remote Controller x 1, Power Adapter x 1, LED Signal Receiver x 1	

<b>P/N</b>	UT33361-RGB-EU-NF	UT33361-RGB-UK-NF
<b>Model</b>	UT33361-RGB-EU-NF	UT33361-RGB-UK-NF
<b>Wattage</b>	24W	
<b>Color</b>	RGB	
<b>Total Length</b>	40ft / 12m	
<b>LED Type</b>	S050	
<b>LED Quantity</b>	210 LEDs	
<b>Input Voltage</b>	100-240V AC	
<b>Frequency</b>	50/60Hz	
<b>Working Voltage</b>	24V	
<b>Working Temperature</b>	-25°C~40°C	
<b>Restriction</b>	Indoor Use Only	
<b>Battery Type</b>	CR2025 (for remote controller)	
<b>Package Includes</b>	Light Strip x 2, Remote Controller x 1, Power Adapter x 1, LED Signal Receiver x 1	

<b>P/N</b>	UT33362-RGB-EU-NF	UT33362-RGB-UK-NF
<b>Model</b>	UT33362-RGB-EU-NF	UT33362-RGB-UK-NF
<b>Wattage</b>	24W	
<b>Color</b>	RGB	
<b>Total Length</b>	65.6ft / 20m	
<b>LED Type</b>	S050	
<b>LED Quantity</b>	340 LEDs	
<b>Input Voltage</b>	100-240V AC	
<b>Frequency</b>	50/60Hz	
<b>Working Voltage</b>	24V	
<b>Working Temperature</b>	-25°C~40°C	
<b>Restriction</b>	Indoor Use Only	
<b>Battery Type</b>	CR2025 (for remote controller)	
<b>Package Includes</b>	Light Strip x 2, Remote Controller x 1, Power Adapter x 1, LED Signal Receiver x 1	

## 2. Components

Light Strip



RF Remote Controller



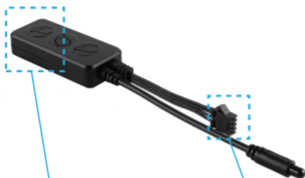
Power Adapter



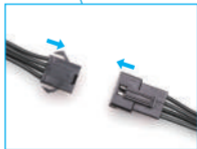
LED Signal Receiver

Note: Power Adapter Cord - type Z attachment. For type Z attachment: The cable or cord cannot be replaced without breaking or destroying the luminaire.

## LED Signal Receiver



Access Port for 12/24V DC  
Power Adapter



4-Pin Access Port for  
Light Strip

## RF Remote Controller





## Dynamic Mode

There are 6 preset dynamic modes, and their speed can be adjusted with the “QUICK” or “SLOW” button.

1. JUMP3: Flash and loop among 3 colors (Red, Green, Blue).
2. JUMP7: Flash and loop among 7 colors (Red, Green, Blue, Yellow, Purple, Cyan, White).
3. FADE3: Fade and loop among 3 colors (Red, Green, Blue).
4. FADE7: Fade and loop among 7 colors (Red, Green, Blue, Yellow, Purple, Cyan, White).
5. FLASH: Flash on white color only.
6. AUTO: Loop among the above 5 dynamic modes. The FLASH mode (white color only) repeats 20 times, while the rest four modes repeats 4 times in each loop.

## How to DIY colors?

This light strip is made of RGB LEDs, which means there are three colors (red/green/blue) on one LED. All lighting colors are made by changing the ratio of red, green and blue on the LED.

e.g. Red + Green = Yellow Lighting

Red + Blue = Purple Lighting

Green + Blue = Cyan Blue Lighting

Firstly, choose and press one button from DIY1 to DIY6 on the RF controller, for instance, the DIY1 button. Secondly, press  $\uparrow$  or  $\downarrow$  button to increase ( $\uparrow$ ) or decrease ( $\downarrow$ ) the ratio of red, green and blue on the LED, so as to create different lighting colors. Then the specific DIY color lighting will be saved on the DIY1 button (the button you choose on the first step). Next time when you want to use this DIY color lighting, simply press DIY1 button for a quick access.

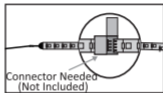
## 3. Installation

### 1. How to cut the LED strip?

Before cutting the LED strip, please keep these in mind.

- (1) Once the strip is cut, an extra connector is needed for reconnection, otherwise the rest part being cut can not work. The connector is not included in the package. You may contact the seller for the connector details.

- (2) Double confirm the length for installation before making the cut.
- (3) Cut the strip along the marks.



## 2. How to install the LED strip?

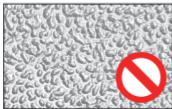
- (1) Choose an even and smooth surface.



NO Knitted or Wool Fabrics



NO Plastered Wall



NO Rough Plastic Surface

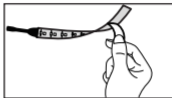


NO Frosted Glass

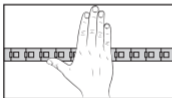
(2) Sweep the dust off the surface.



(3) Tear the back sheet.

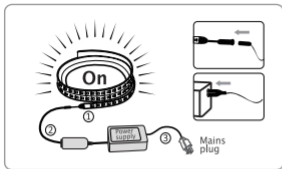


(4) Press the strip with force.



(5) Connect the light strip ① to controller cable ②, and then connect controller cable to power adapter ③.

Plug the adapter into the socket and turn on the light strip by pressing 'ON' button on the RF remote controller.



**Note:**

- (1) If the strip can't light up after the installation, please check whether the joints are connected correctly.
- (2) Please make sure to turn off the power supply during routine maintenance.
- (3) To avoid any damage to the strip, please do not use chemical solvent during routine maintenance.

## 4. How to control the light strip?

4.1 Download the App Lotus Lantern by scanning the QR code below. This App is compatible with Android 4.0 and iOS 8.1 or above.

Download APP

1: Scan the QR code from the [label] or user manual.



The APP is compatible with Android 4.0 and IOS 8.1 and higher version.

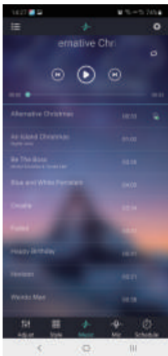
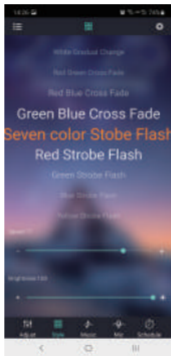


Android 4.0



iOS 8.1

- 4.2 Power on the light.
- 4.3 Activate the Bluetooth function on your phone and open the App to automatically connect to the light.
- 4.4 Enjoy the lighting by exploring the functions such as brightness, modes, music sync, timer etc via the App.



## Contact Us

Have some issue? No worries! Please reach us via these channels.  
Our customer services team is more than happy to help.



[www.ustellar.com](http://www.ustellar.com)



[support@ustellar.com](mailto:support@ustellar.com)

Manufacturer: Shenzhen Ustellar Technology Ltd.  
(shen zhen shi you shi tuo ke ji you xian gong si )  
Address: Rm.201, A Bldg., No. A Qianhai 1st Rd., Shen'gang Cooperation Zone,  
Qianhai, Shenzhen, CHINA 518000



# Usteller



*[www.ustellar.com](http://www.ustellar.com)*



*[support@ustellar.com](mailto:support@ustellar.com)*

FC RoHS   