

A photograph of a wood-burning hot tub in a forest. The hot tub is made of wood and has a metal chimney pipe extending upwards, with white smoke rising from it. Two people are sitting on the ground next to the hot tub, one on the left and one on the right. The background is a dense forest of tall evergreen trees. A yellow circle is overlaid on the image, containing the text "GOOD LAND".

GOOD LAND



THANK YOU FOR PURSUING A SLOWER, MORE CONSIDERED LIFE WITH US

Instructional videos and
more info available [here](#)



@hello_goodland
hellogoodland.com

A NOTE ON MATERIALS

Your hot tub is built from natural, sustainable and honest materials.

Our chosen palette is hand selected for its enduring properties and may have unique characteristics including surface imperfections or machine marks.

Intentionally used in their raw form, we acknowledge the hand of time.

The beautiful patina of aluminum, the salt-air cured silvering of western cedar; we embrace them.

CONTENTS CHECKLIST

- | | |
|--|--|
| <input type="checkbox"/> STOVE | <input type="checkbox"/> SEAT PLATFORM & BACKRESTS (2) |
| <input type="checkbox"/> STOVE KNOBS (2) | <input type="checkbox"/> PINS (6) |
| <input type="checkbox"/> STOVE LID | <input type="checkbox"/> STIRRING PADDLE |
| <input type="checkbox"/> CHIMNEY | <input type="checkbox"/> INSTRUCTION PLATE |
| <input type="checkbox"/> COVER | <input type="checkbox"/> DRAIN PLUG |
| <input type="checkbox"/> MIN. WATER INDICATOR RING | <input type="checkbox"/> DRAIN HOSE KIT |

CLEANING & CARE

OFTEN

When empty, wipe down the aluminum with a natural cleaner like lemon or vinegar. Lightly scrub the sidewalls and cedar loungers as needed and rinse.

Empty stove box as required.

SEASONAL

For a deeper clean, remove components and roll hot tub on its side to allow for a deeper clean. Tub may be kept on its side or upside down for long term storage.

WINTER

We recommend draining your hot tub after use to prevent water from freezing. Do not allow water to freeze in the drain hose assembly, use drain plug. Tank de-icers may be used in cold areas to prevent water from freezing solid.

SAFETY

Risk of drowning. Do not allow children or animals unattended around filled hot tub. Always use a cover.

Do not allow temperature to reach above 106°F.

Heat increases the effects of drugs and alcohol, use hot tub responsibly..

Risk of fire and carbon monoxide. Do not use in close proximity to combustible materials.

Do not use indoors or without adequate ventilation.

PREPARATION & MOVING

SITE PREP

Ensure your space is prepared for your **WOOD BURNING HOT TUB**.

We suggest use on level ground in an area with good drainage.

Ensure surface is 10ft away from buildings or dry vegetation and can withstand filled weight of 3000lbs. Concrete, pavers, gravel, deck, cedar chips, or grass are all suitable.

UNBOXING

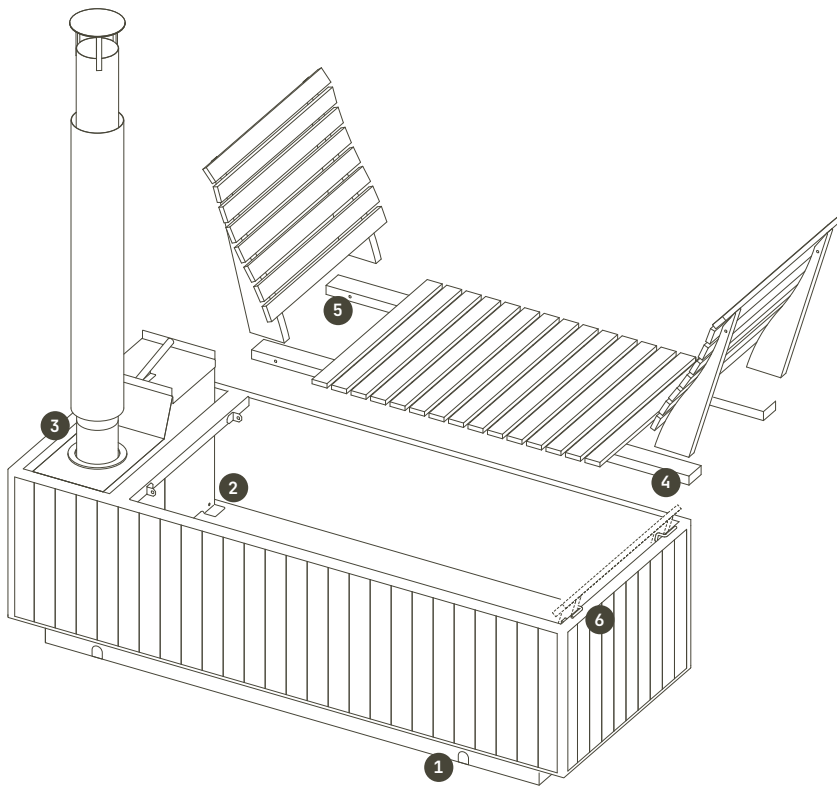
Remove packaging and set aside all components

MOVE

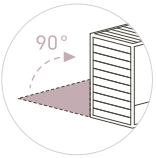
With components set aside, carry hot tub to site. This may require 2-4 people.

The cedar siding comes installed, but can be removed to further reduce weight.

ASSEMBLY



ASSEMBLY CONT.



RINSE

Roll tub onto it's side and rinse interior to remove any dust or debris

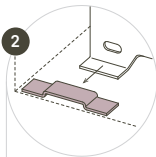
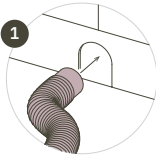
DRAINAGE

To install the (optional) **DRAIN HOSE**, with tub on it's side, locate knockouts around base and push to remove desired hose location

Screw **90° ELBOW** to underside of drain

Feed **DRAIN HOSE** through knockout and attach to **ELBOW**

Flip tub back upright. Insert **DRAIN PLUG**

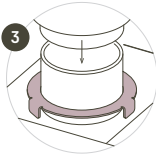
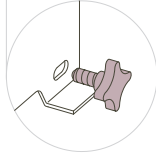


STOVE

Choose **STOVE** orientation (stove is reversible - opening should be readily accessible) and lower into tub.

Slide feet under brackets to secure side closest to the end

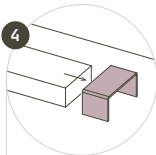
Secure opposite end by threading **STOVE KNOBS** into anchor points



CHIMNEY

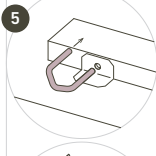
Slide **MIN. FILL INDICATOR RING** over chimney base on **STOVE**

Insert **CHIMNEY** over top

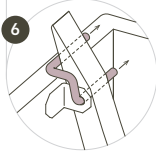


SEATING

Insert ends of **SEAT PLATFORM** under brackets in tub end



Use **PINS** to secure opposite ends of **SEAT PLATFORM** through angle brackets on tub bottom



Place **BACKRESTS** on either side and secure to tub through vertical supports and brackets using the remaining **PINS**

HEATING & USE

DO NOT START FIRE UNTIL TUB IS FILLED WITH WATER

- 1 Remove **STOVE LID**
- 2 Use kindling to start a small fire in bottom of **STOVE BOX***
- 3 As fire grows, add larger wood (1-4" dia) to gradually grow fire
- 4 Partially replace **STOVE LID** allowing gap for **AIR INTAKE**
- 5 Continue to feed the fire with wood
- 6 Stir water frequently to circulate water
- 7 Water should reach bathing temp in approx 90-120 minutes
- 8 To prevent overheating, stop adding wood when water reaches 90° F (it will gently climb to ~104° F)

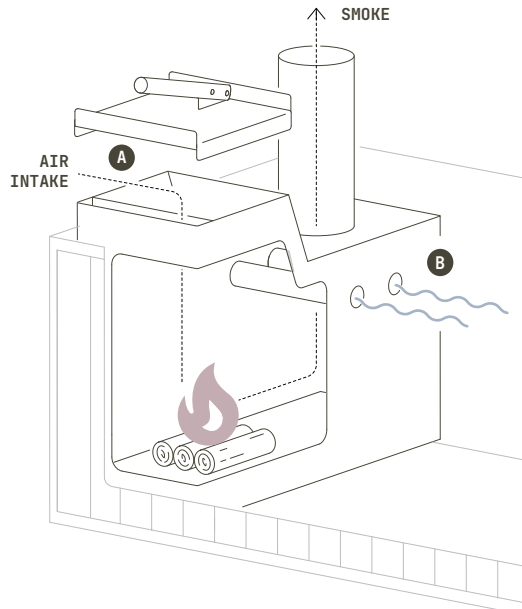
ENSURE WATER HAS ADEQUATE AIR & STIR WATER FREQUENTLY

*Add 1" of sand to the bottom of the stove box to extend stove life

HOW IT WORKS

Your hot tub **STOVE BOX** is submerged in water, creating a dry space for your fire.

- A** The insulated lid controls air to your fire. Remove completely when starting a fire. Leave gap at stove front open when maintaining fire / temperature.
- B** Heat exchange pipes allow water to flow through the stove box, effectively heating your tub to bathing temperature



GOODLAND

RITUALS FOR A

LIFE WELL-LIVED

