

ABOUT US



Sprecher Brewing is a contract and private label beverage manufacturer located near Milwaukee, Wisconsin. Our mission is to leverage nearly 40 years of business experience in brewing to manufacture your product exactly the way you want it. Our facility specializes in high-quality hand-crafted beers and sodas. We pride ourselves on our top-notch customer service and quick turnaround times.

Sprecher Brewing is the proud brewer and bottler of many craft beers and sodas, including the best tasting Root Beer in the USA! We have won hundreds of awards, including the prestigious Great American Beer Festival Small Brewery and Brewmaster of the Year.



CUSTOMER SERVICE

- We can source all ingredients and packaging
- Quick Initial implementation
- Graphics Team in house



CONTACT US!

Our experienced team can't wait to partner with you and support your vision with endless customization options that will bring your product to life.

Request a quote:

 <https://www.sprecherbrewery.com/co-packing/>

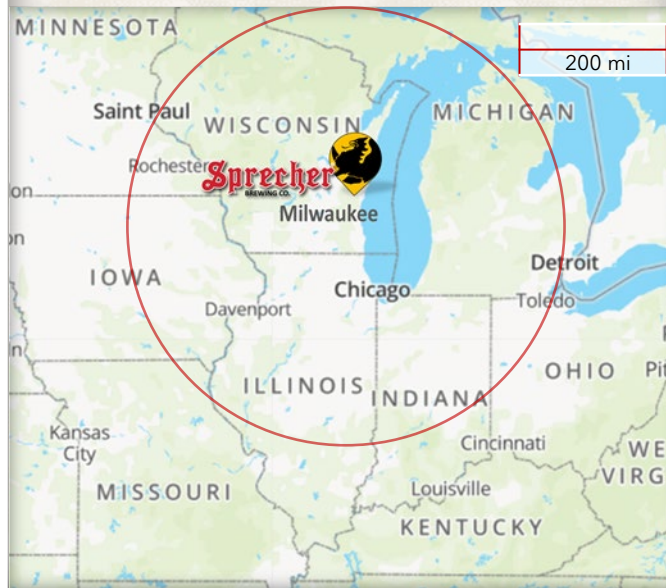
Contract Packer:

414.964.5526 • copack@sprecherbrewery.com

WWW.SPRECHERBREWERY.COM | 701 W GLENDALE AVE • GLENDALE, WI 53209

FACILITY

- Midwest location - near Milwaukee WI
- Easy on/off interstate access
- 10-acre compound
- 24-hour security video monitoring



Sprecher[®]

BREWING CO.



CONTRACT PACKER

BREW GOOD THINGS[™]



OUR CAPABILITIES

Sprecher Brewing has a versatile facility that specializes in bottling, canning, and bulk packaging of high-quality products.

We can produce:

Non-Alcohol	Alcohol
<ul style="list-style-type: none"> • Craft Soda • Mixers • Sparkling Water 	<ul style="list-style-type: none"> • Craft Beer • Hard Seltzer • Hard Cider

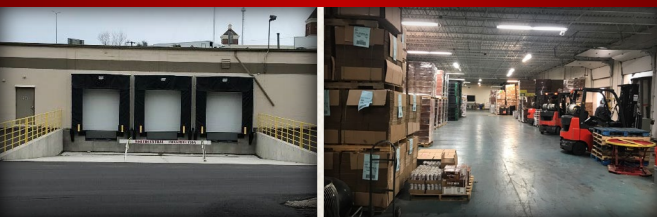
Sprecher gives you a variety of options for customizing your bottles and cans. There's no limit to how you can customize your product with Sprecher.

BATCHING & BLENDING



- Flash Pasteurization for Alcoholic Drinks
- Carbonated Holding Tanks
- Cold Fill
- In-house Sugar Base Production

WAREHOUSING



- 90,000 sq ft warehouse space
- 7 docks, large yard for trailer storage
- Make and ship
- Inventory management services available
- Warehouse storage space for rent

BOTTLES



- 12oz long neck (amber and flint) bottles
- Glass Bottle line - 8,000 cases/day
- Cut & Stack front & neck labeler
- Inkjet date code on bottle
- Additional 12oz glass bottling line coming soon - doubling capacity

Carton Packaging

- 4pk & 6pk
- 24pk loose

Case Pack Finishing

- 24pk box
- Inkjet capabilities: date code, UPC, QR, graphics and product description



BULK



- 3 & 5 gallon Bag-in-Box
- ¼ & ½ BBL Carbonated Draft

ALUMINUM CANS



- 12oz & 16oz Standard with 202 ends
- Large Aluminum Can line - 4,000 cases/day
- Small Aluminum Can line - 500 cases/day small & test batches
- Pressure sensitive labeler
- Inkjet date code on can

Carton Packaging

- 4pk & 6pk high cone or loose
- Hand pack any box size

Case Pack Finishing

- 12pk or 24pk trays shrink wrapped
- Inkjet date code on box or tray



CERTIFICATIONS & PERMITS

- FDA Alternating Proprietorship
- TTB & Wisconsin Brewery & Winery
- Wisconsin Food Manufacturing
- Wisconsin Kosher Available

